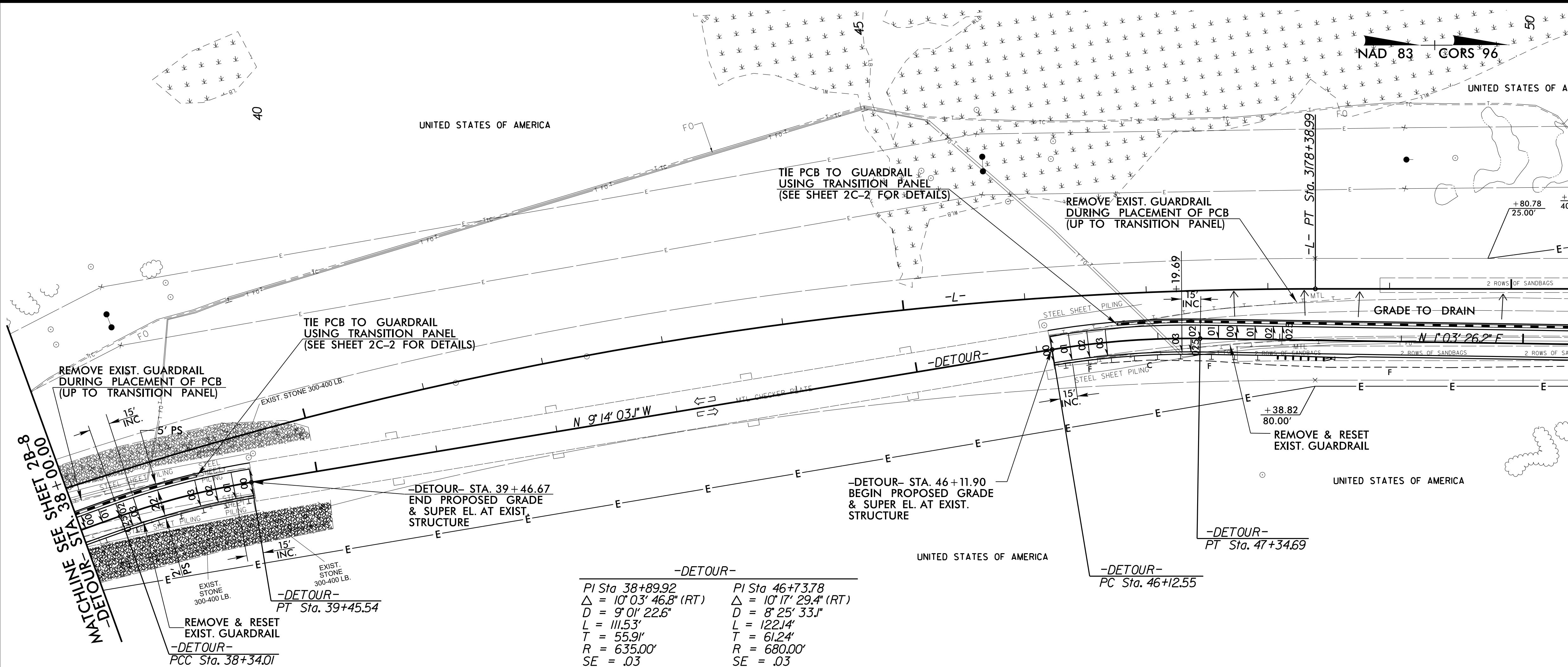
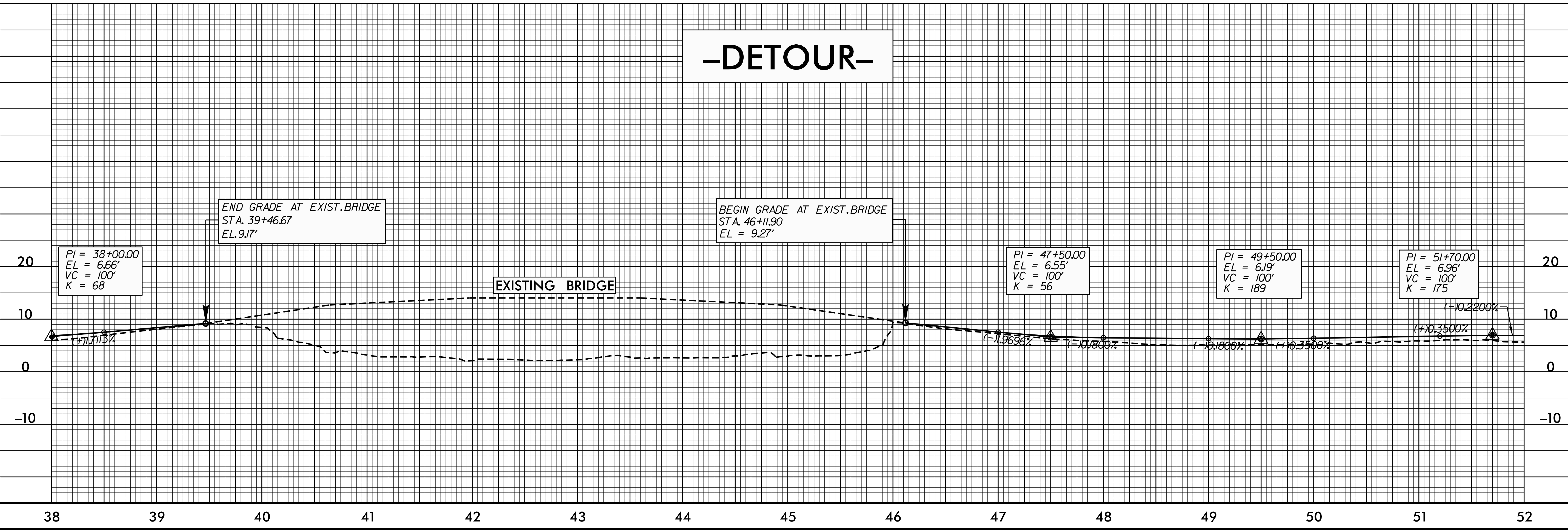


8/17/99

PROJECT REFERENCE NO. B-2500AB	SHEET NO. 2B-9
RW SHEET NO.	
ROADWAY DESIGN ENGINEER PROFESSIONAL SEAL 025873 GARY R. LOVERING	HYDRAULICS ENGINEER PROFESSIONAL SEAL 024897 JOHN W. TRAPPEL
DocuSigned by Gary Lovering 12/2015	DocuSigned by John W. Trappel 12/2015



-DETOUR-	
PI Sta 38+89.92	PI Sta 46+73.78
$\Delta = 10^{\circ}03'46.8"$ (RT)	$\Delta = 10^{\circ}17'29.4"$ (RT)
$D = 9^{\circ}01'22.6"$	$D = 8^{\circ}25'33.1"$
$L = 111.53'$	$L = 122.14'$
$T = 55.9'$	$T = 61.24'$
$R = 635.00'$	$R = 680.00'$
$SE = .03$	$SE = .03$



P:\AUG-2015\1452\B2500AB Detour\B2500AB_Rdy.psd\2B-9.dgn