

**This electronic collection of documents is provided
for the convenience of the user
and is Not a Certified Document –**

**The documents contained herein were originally issued
and sealed by the individuals whose names and license
numbers appear on each page, on the dates appearing
with their signature on that page.**

**This file or an individual page
shall not be considered a certified document.**

09/08/99

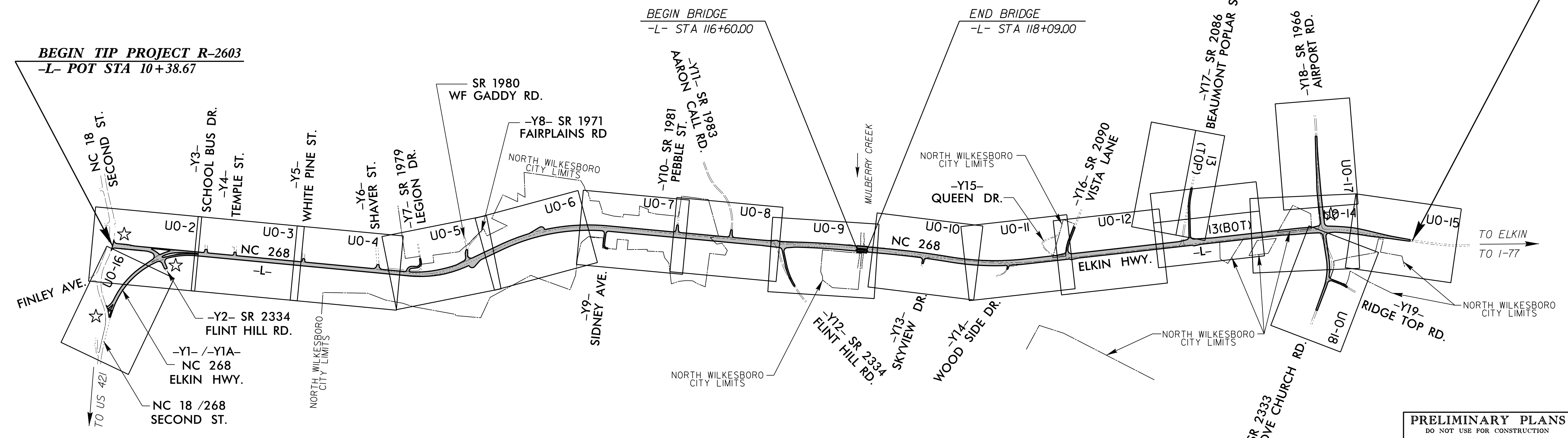
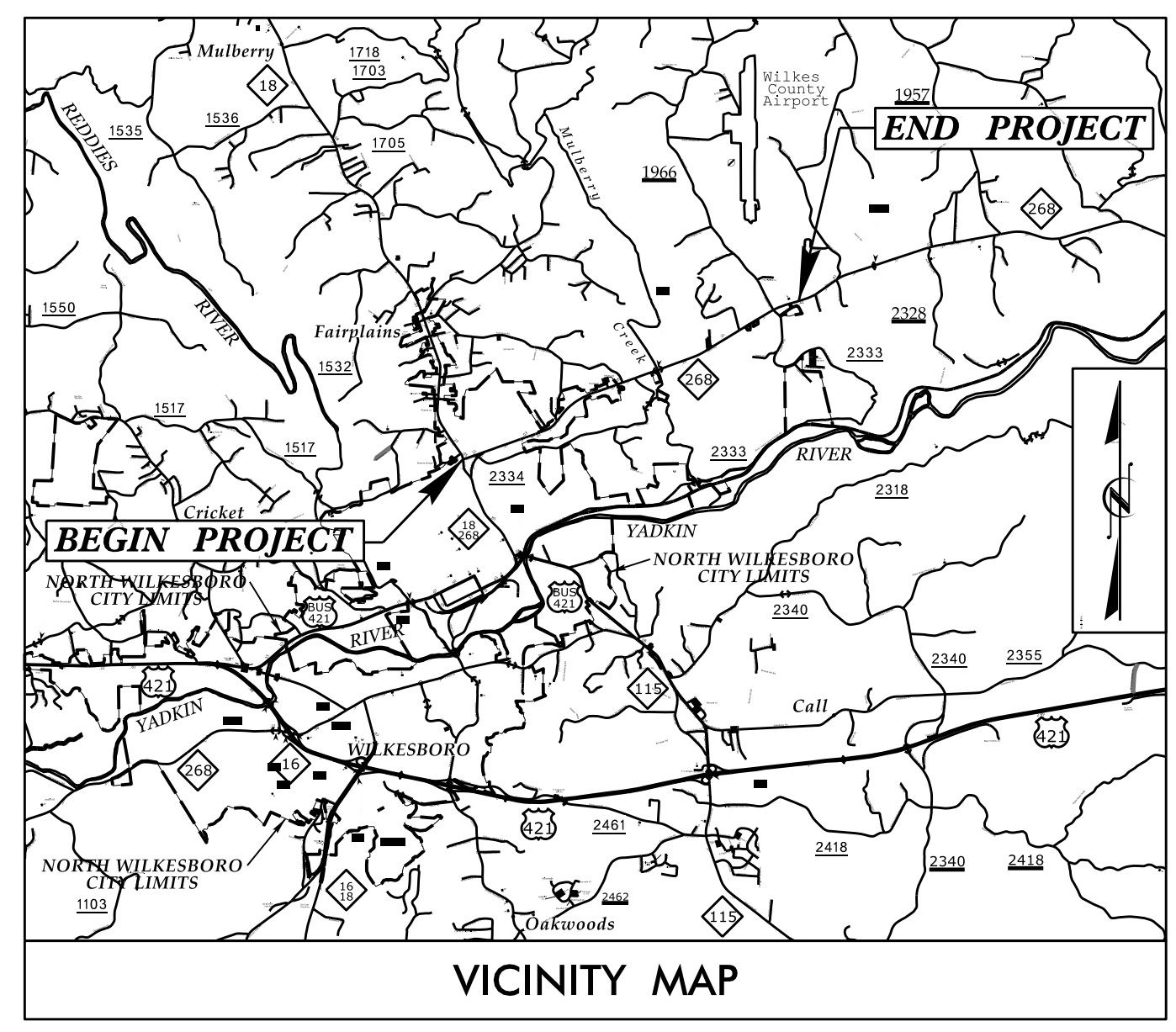
TIP PROJECT: R-2603

STATE OF NORTH CAROLINA
DIVISION OF HIGHWAYS

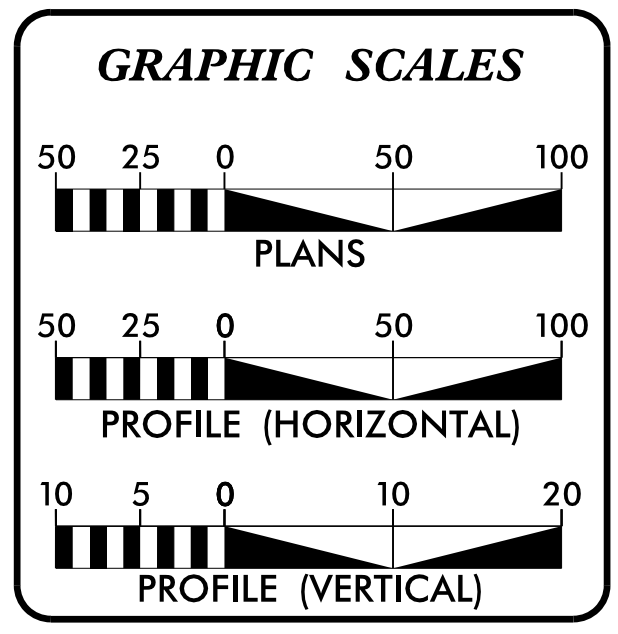
T.I.P. NO.	SHEET NO.
R-2603	UO-1

**UTILITIES BY OTHERS PLANS
WILKES COUNTY**

**LOCATION: NC 268 FROM MULTI-LANES EAST OF
NC 18 TO SR 1966 (AIRPORT ROAD)**
TYPE OF WORK: UTILITY BY OTHERS RELOCATION



PRELIMINARY PLANS
DO NOT USE FOR CONSTRUCTION



INDEX OF SHEETS	
SHEET NO.	DESCRIPTION
UO-1	TITLE SHEET
UO-2 THRU UO18	PLAN SHEET

- UTILITY OWNERS ON PROJECT**
- (1) POWER DISTRIBUTION - DUKE ENERGY
 - (2) POWER TRANSMISSION - BLUE RIDGE EMC
 - (3) TELEPHONE - WILKES COMMUNICATION
 - (4) TELEPHONE - CENTURYLINK
 - (5) CATV - CHARTER
 - (6) GAS - FRONTIER

UTILITY DESIGN BY:
MA Engineering
CONSULTANTS, INC.
598 East Chatham Street Suite 137 Cary, NC 27511
Phone: 919 297 0220 Fax: 919 297 0221

PREPARED IN THE OFFICE OF:
**DIVISION OF HIGHWAYS
UTILITIES UNIT
UTILITIES ENGINEERING**

1555 MAIL SERVICES CENTER
RALEIGH, NC 27699-1555
PHONE (919) 707-6690
FAX (919) 250-4151

Roger Worthington, P.E. UTILITIES SECTION ENGINEER
Carl Barclay, P.E. UTILITIES SQUAD LEADER PROJECT ENGINEER
Michael Bright UTILITIES PROJECT DESIGNER

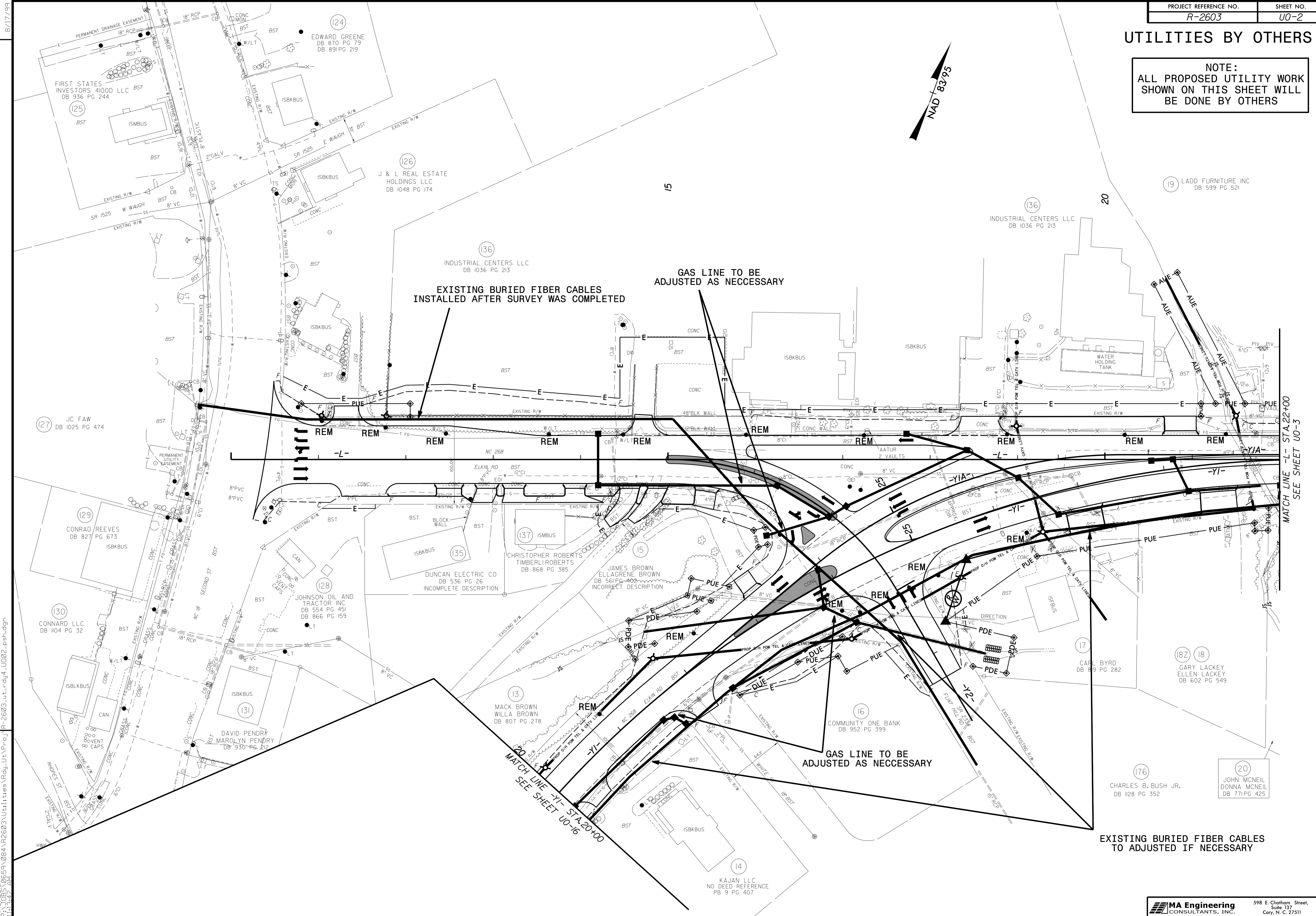
7/13/2015
P:\JOBS\0659\084\R2603\Utilities\Rdy_Ut\Proj\R-2603_ut_1_sh_u01.psh.dgn
2:40:39 PM

UTILITIES BY OTHERS

NOTE:
ALL PROPOSED UTILITY WORK
SHOWN ON THIS SHEET WILL
BE DONE BY OTHERS



REVISIONS



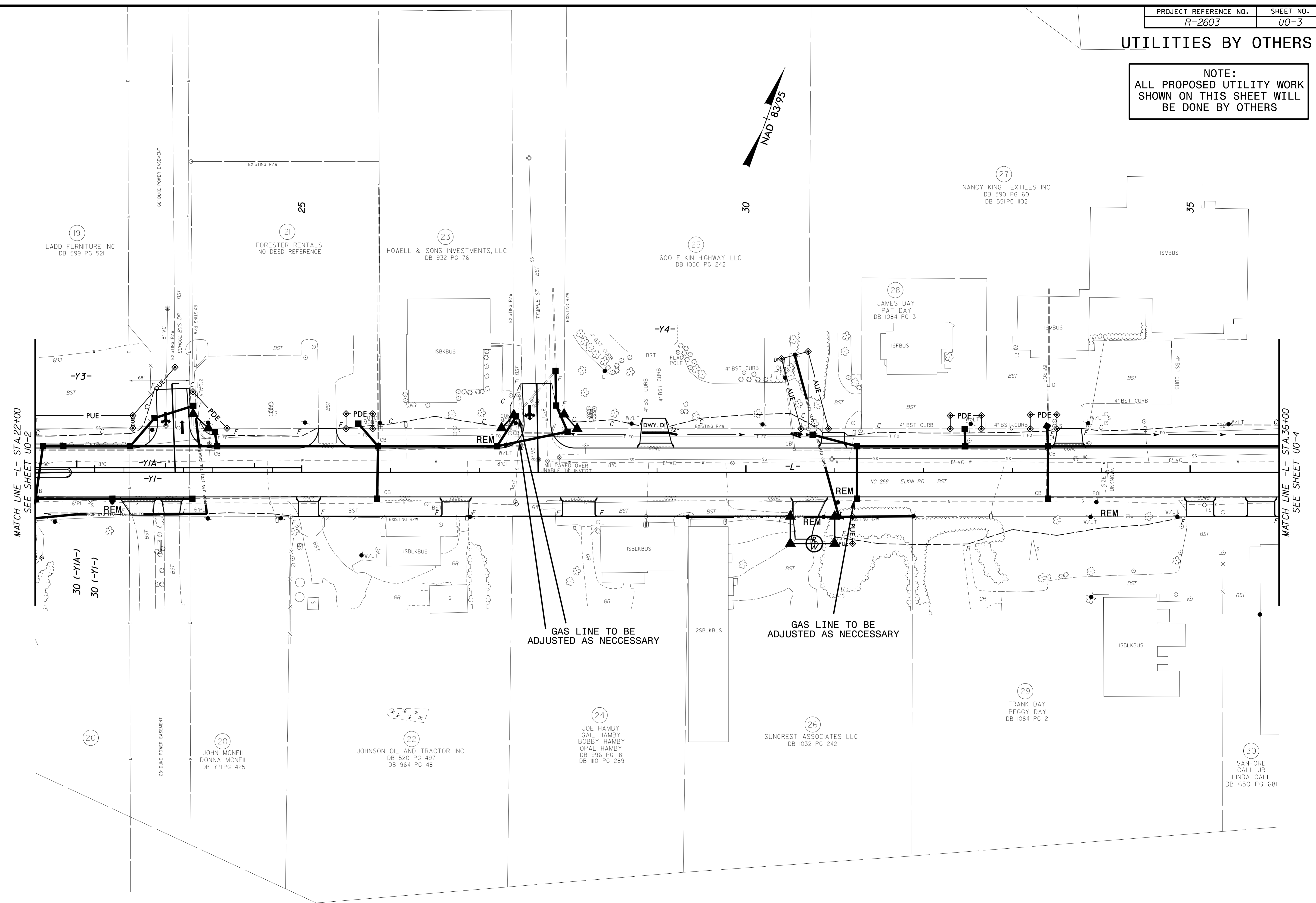
7/16/2015
 F:\065\0659\084\2603\U0-1\11\ties\Rel\Ut\Pro\U0-2\2603_ut_rdy4_U002_psh.dgn
 11:34:32 AM

MATCH LINE - L - STA. 22+00
 SEE SHEET U0-3

UTILITIES BY OTHERS

NOTE:
ALL PROPOSED UTILITY WORK
SHOWN ON THIS SHEET WILL
BE DONE BY OTHERS

8/17/09



MATCH LINE -L- STA.22+00
SEE SHEET U0-2

MATCH LINE -L- STA.36+00
SEE SHEET U0-4

GAS LINE TO BE
ADJUSTED AS NECESSARY

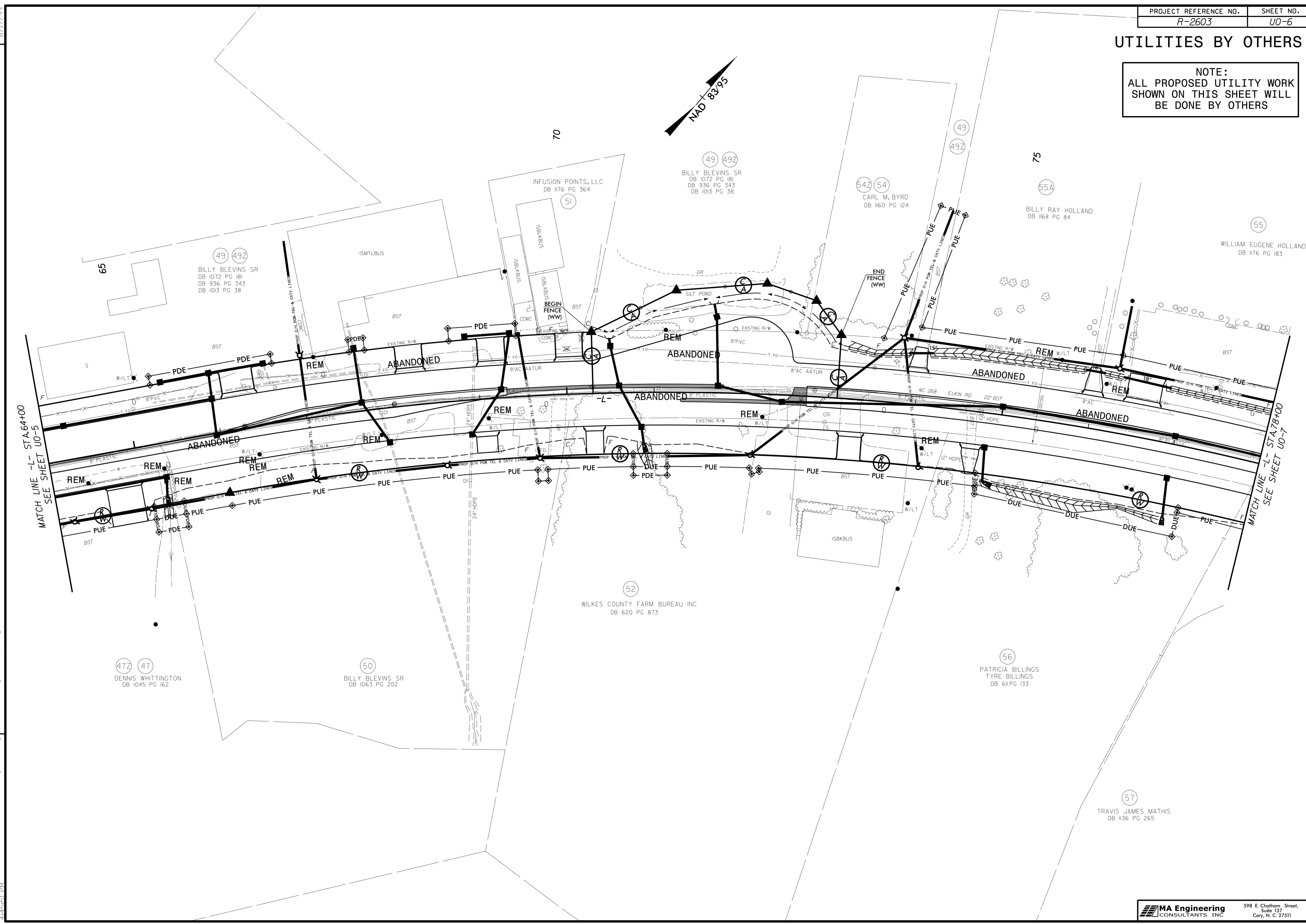
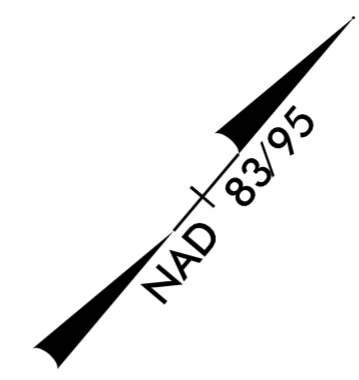
GAS LINE TO BE
ADJUSTED AS NECESSARY

REVISIONS

6/29/09 5:06:59 PM R:\2603\U0-1\Drawings\RDY\U03.psh.dgn
 6/29/09 5:06:59 PM R:\2603\U0-1\Drawings\RDY\U03.psh.dgn
 6/29/09 5:06:59 PM R:\2603\U0-1\Drawings\RDY\U03.psh.dgn

UTILITIES BY OTHERS

NOTE:
ALL PROPOSED UTILITY WORK
SHOWN ON THIS SHEET WILL
BE DONE BY OTHERS



MATCH LINE -L- STA. 64+00
SEE SHEET U0-5

MATCH LINE -L- STA. 78+00
SEE SHEET U0-7

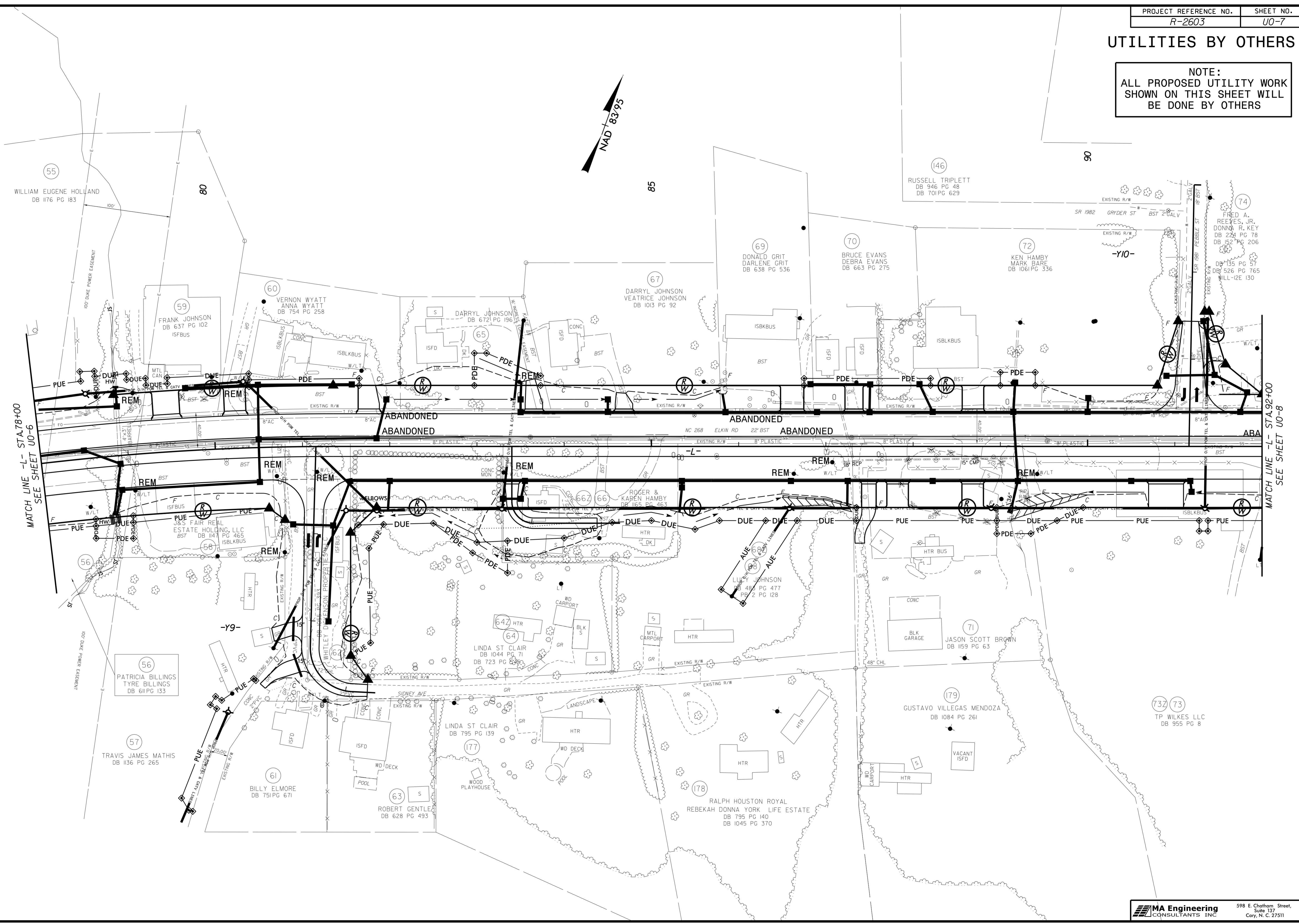
REVISIONS

8/17/09
 B:\2009\06\0659\08A\R2603\U+1\1\ties\Redy_Ut_Proj\R-2603_Ut_rdy8_U06_psh.dgn
 4:25:41 PM

UTILITIES BY OTHERS

NOTE:
ALL PROPOSED UTILITY WORK
SHOWN ON THIS SHEET WILL
BE DONE BY OTHERS

8/17/99



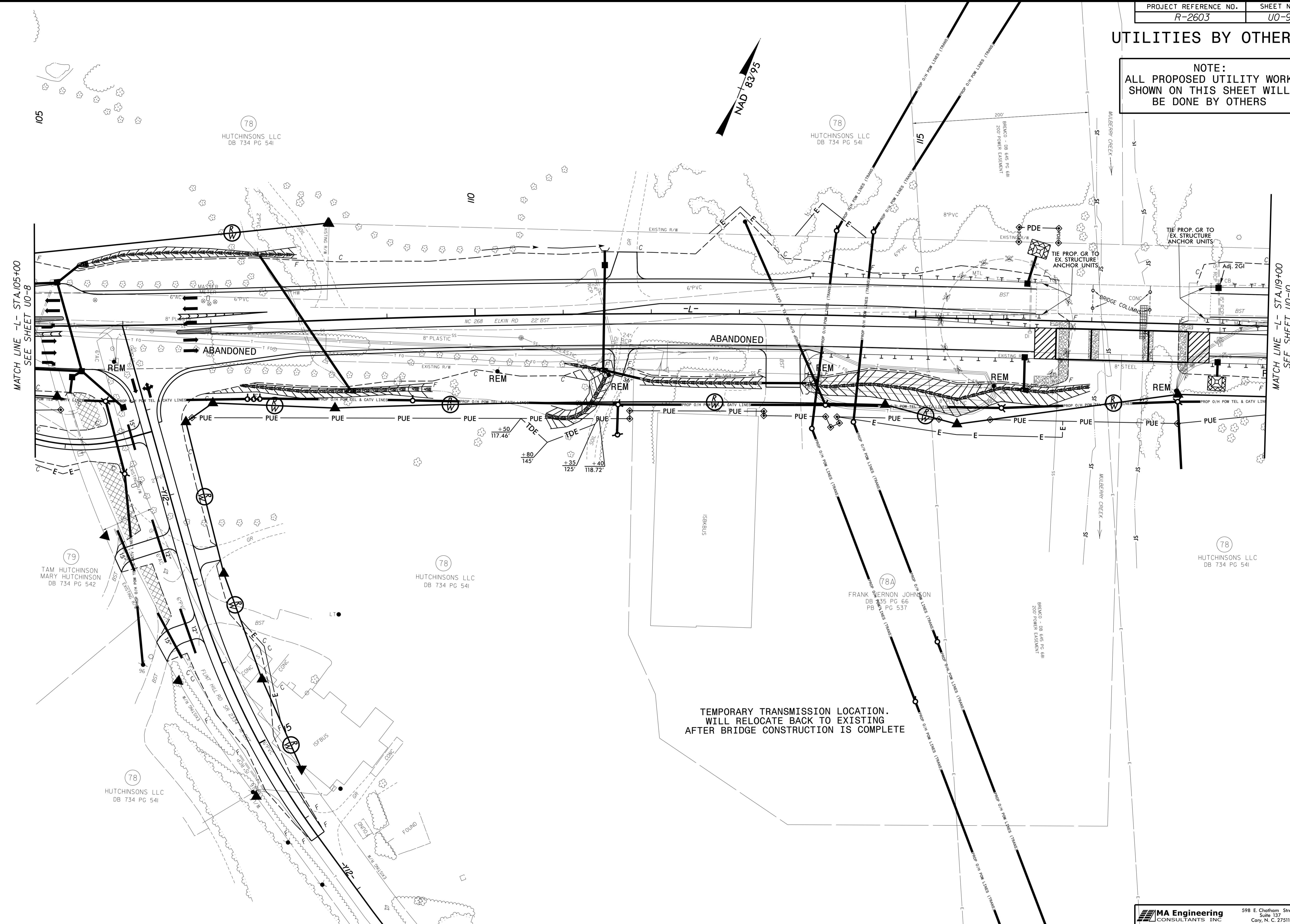
REVISIONS

6/29/2005
 06576659\084\2603\Utl\11\tees\Redy_Utl_Proj\R-2603_Utl_rdy_9_U07_psh.dgn
 4:25:56 PM

UTILITIES BY OTHERS

NOTE:
ALL PROPOSED UTILITY WORK
SHOWN ON THIS SHEET WILL
BE DONE BY OTHERS

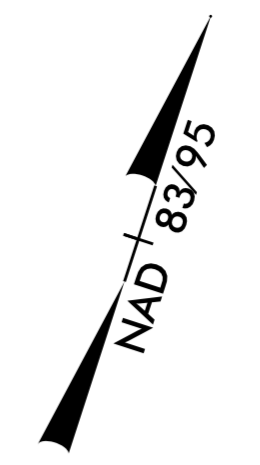
8/17/09
 F:\2\05\0659\08A\R2603\U0-9\Drawings\U0-9\U009_psh.dgn
 10:00:32 AM



REVISIONS

UTILITIES BY OTHERS

NOTE:
ALL PROPOSED UTILITY WORK
SHOWN ON THIS SHEET WILL
BE DONE BY OTHERS



MATCH LINE -L- STA.19+00
SEE SHEET U0-9

MATCH LINE -L- STA.13+00
SEE SHEET U0-11

REVISIONS

8/17/99
7/4/2015
F:\4\2015\0659\084\R2603\U+11\ties\Redy_Ut\Proo\U0-10_psh.dgn
4:20:58 PM

80
JAMES HUTCHINSON JR
DB 101 PG 270

125

81
BLUE RIDGE WATER
ASSOCIATION INC
DB 537 PG 567

83
CASWELL WAGONER
PHYLLIS WAGONER
DB 967 PG 427

130

84
LIFT BODIES INC
DB 618 PG 447

85
LEAH ZETTELMEIER
DIRK ZETTELMEIER
DB 1043 PG 140

78
HUTCHINSONS, LLC
DB 734 PG 541

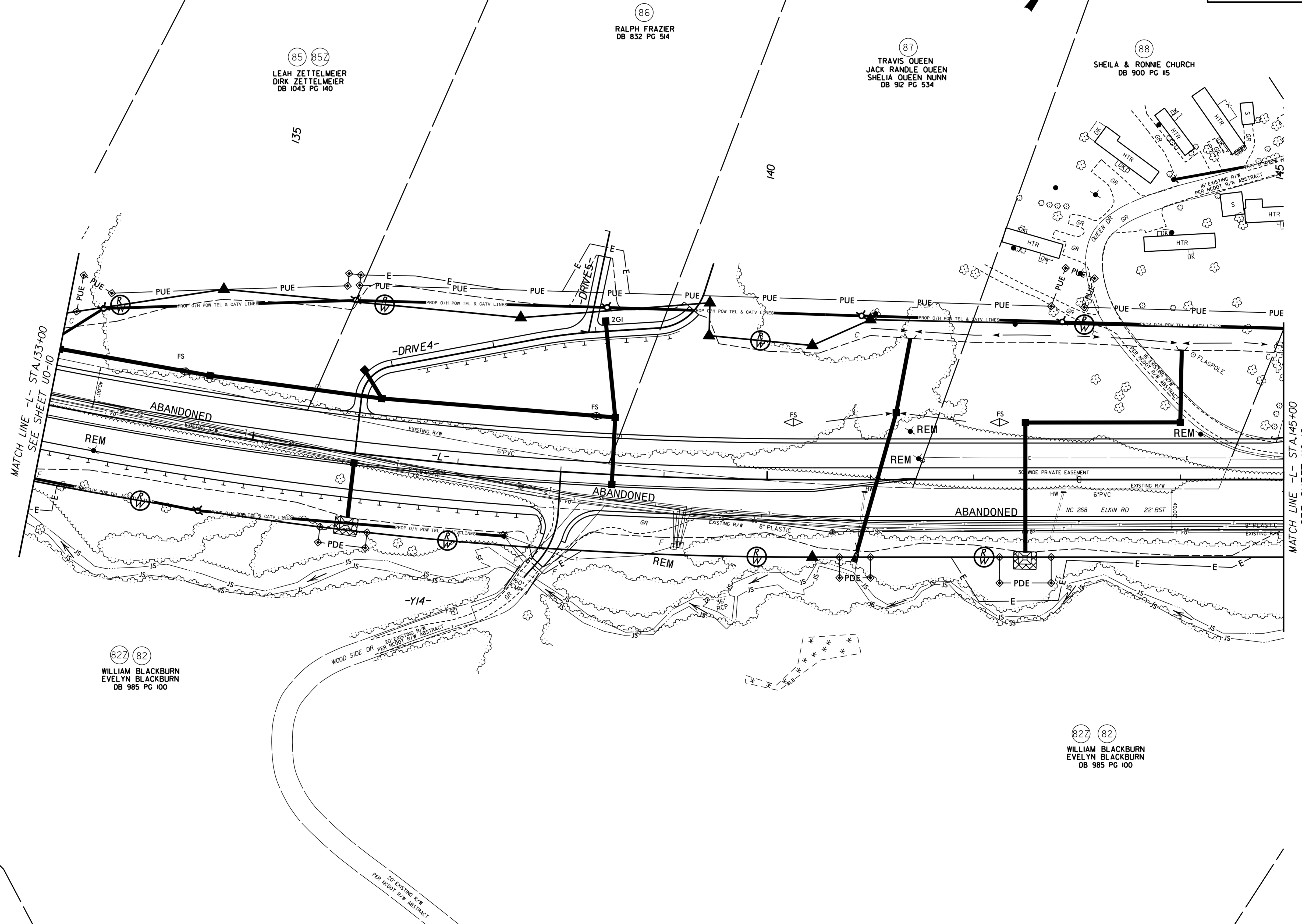
82
WILLIAM BLACKBURN
EVELYN BLACKBURN
DB 985 PG 100

UTILITIES BY OTHERS

NOTE:
ALL PROPOSED UTILITY WORK
SHOWN ON THIS SHEET WILL
BE DONE BY OTHERS

8/17/99

REVISIONS



85 857
LEAH ZETTELMEIER
DIRK ZETTELMEIER
DB 1043 PG 140

86
RALPH FRAZIER
DB 832 PG 514

87
TRAVIS QUEEN
JACK RANDLE QUEEN
SHEILA QUEEN NUNN
DB 912 PG 534

88
SHEILA & RONNIE CHURCH
DB 900 PG 115

82Z 82
WILLIAM BLACKBURN
EVELYN BLACKBURN
DB 985 PG 100

82Z 82
WILLIAM BLACKBURN
EVELYN BLACKBURN
DB 985 PG 100

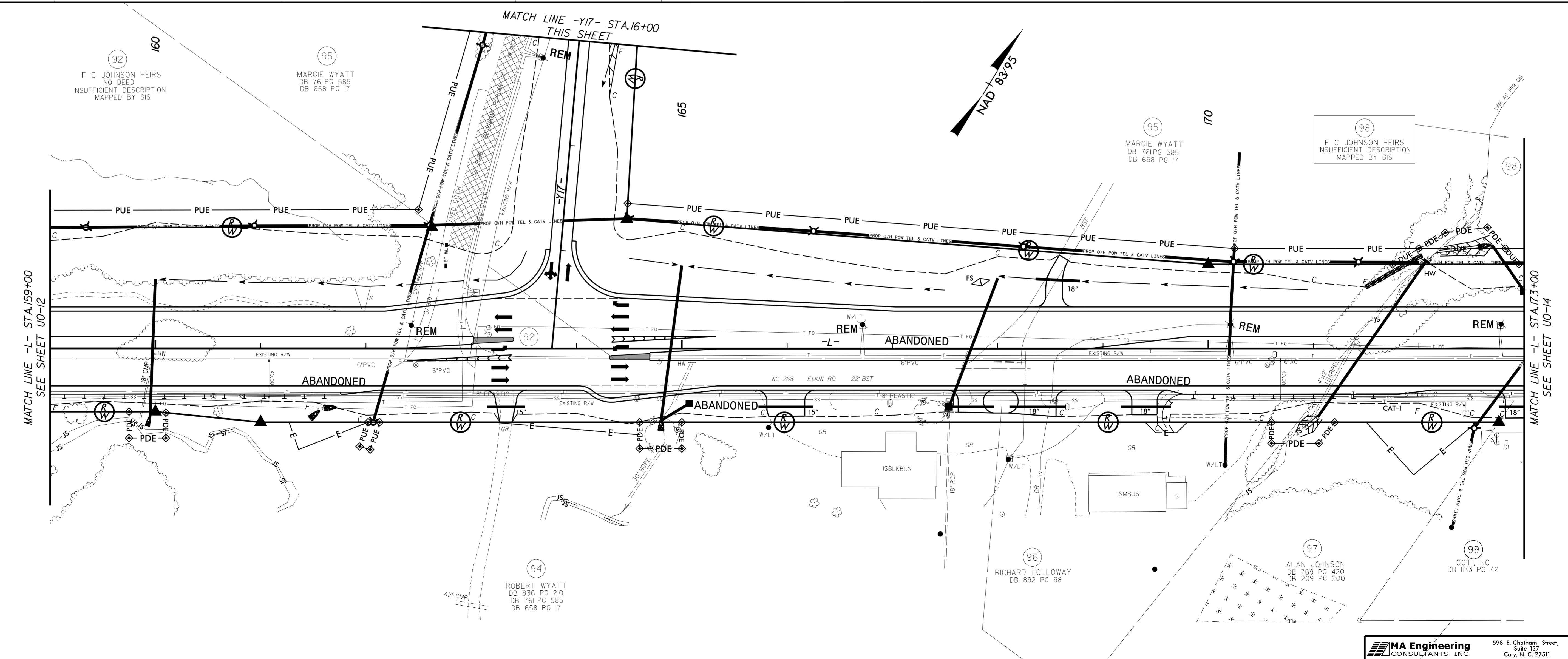
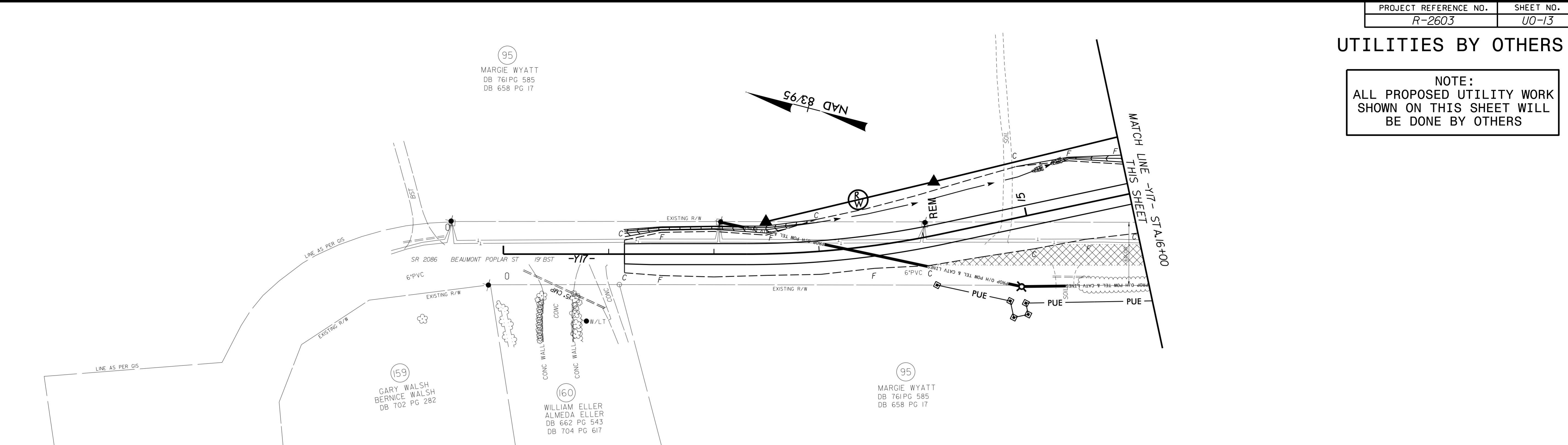
MATCH LINE -L- STA. 133+00
SEE SHEET U0-10

MATCH LINE -L- STA. 145+00
SEE SHEET U0-12

UTILITIES BY OTHERS

NOTE:
ALL PROPOSED UTILITY WORK
SHOWN ON THIS SHEET WILL
BE DONE BY OTHERS

8/17/99

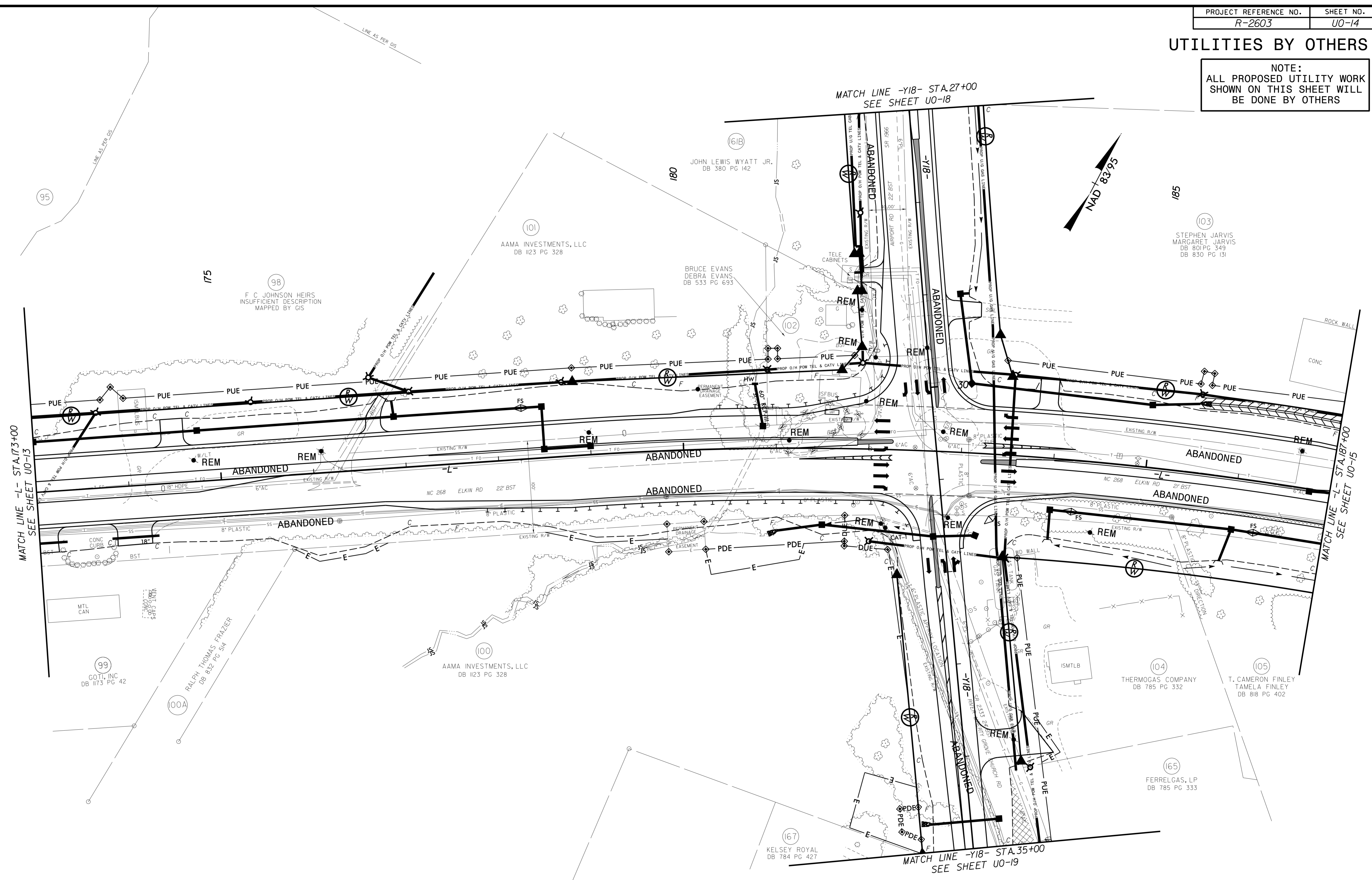


REVISIONS

F:\13\205\0659\084\R2603\U0-13\Drawings\U0-13.dwg
 8/17/99
 2:41:15 PM

UTILITIES BY OTHERS

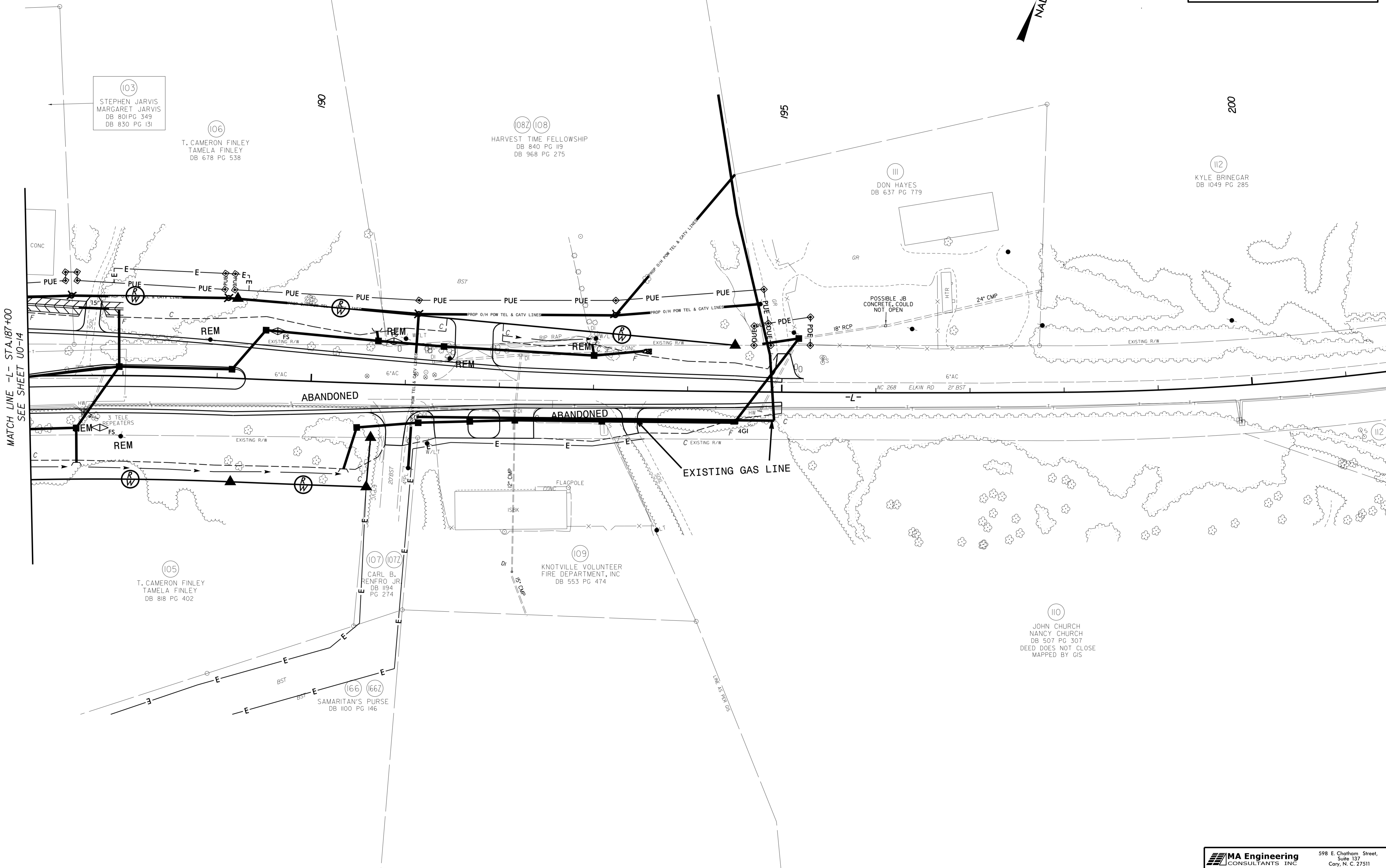
NOTE:
ALL PROPOSED UTILITY WORK
SHOWN ON THIS SHEET WILL
BE DONE BY OTHERS



8/17/09
 7/14/2005
 P:\4\205\0659\084\2603\U0-14\014\014.psh.dgn
 R-2603-ut-rdy16_U014.psh.dgn
 2:22:28 PM

UTILITIES BY OTHERS

NOTE:
ALL PROPOSED UTILITY WORK
SHOWN ON THIS SHEET WILL
BE DONE BY OTHERS



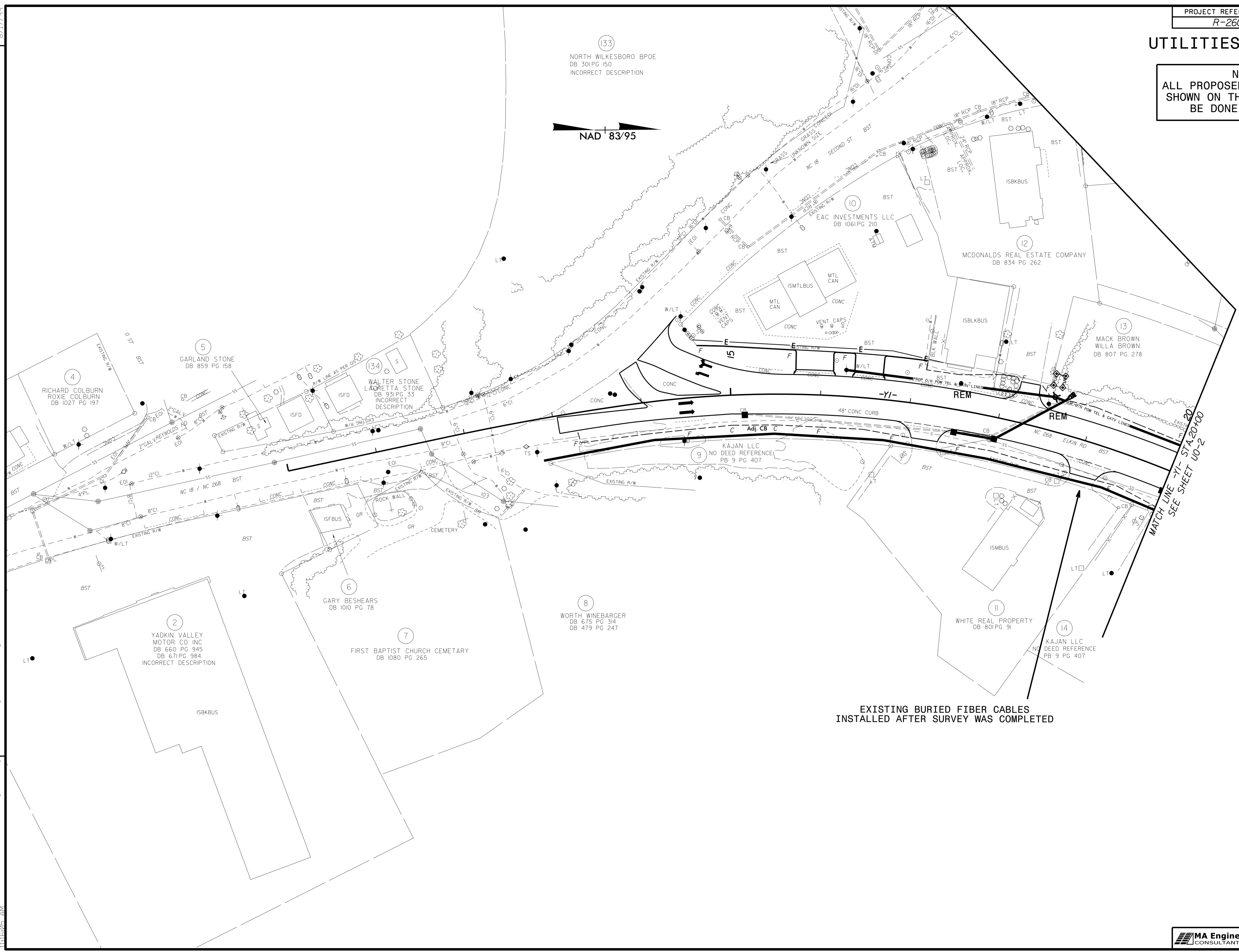
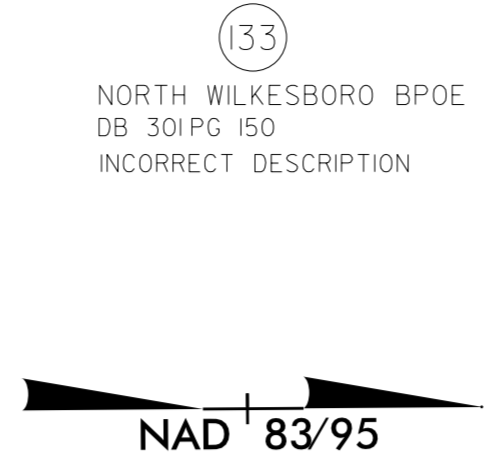
MATCH LINE -L- STA. 187+00
SEE SHEET U0-14

REVISIONS

8/17/09
 T:\3\205\0659\084\R2603\U-t\11\tues\Redy_Ut_Proj\R-2603_ut_rdy17_U015_psh.dgn
 2:41:37 PM

UTILITIES BY OTHERS

NOTE:
ALL PROPOSED UTILITY WORK
SHOWN ON THIS SHEET WILL
BE DONE BY OTHERS



**EXISTING BURIED FIBER CABLES
INSTALLED AFTER SURVEY WAS COMPLETED**

REVISIONS

8/17/09
 F:\16\2015\0659\084\R2603\U+1\11\tues\Rdy_Ut_Proj\R-2603_Ut_rdy18_U016_psh.dgn
 11:16:05 AM

