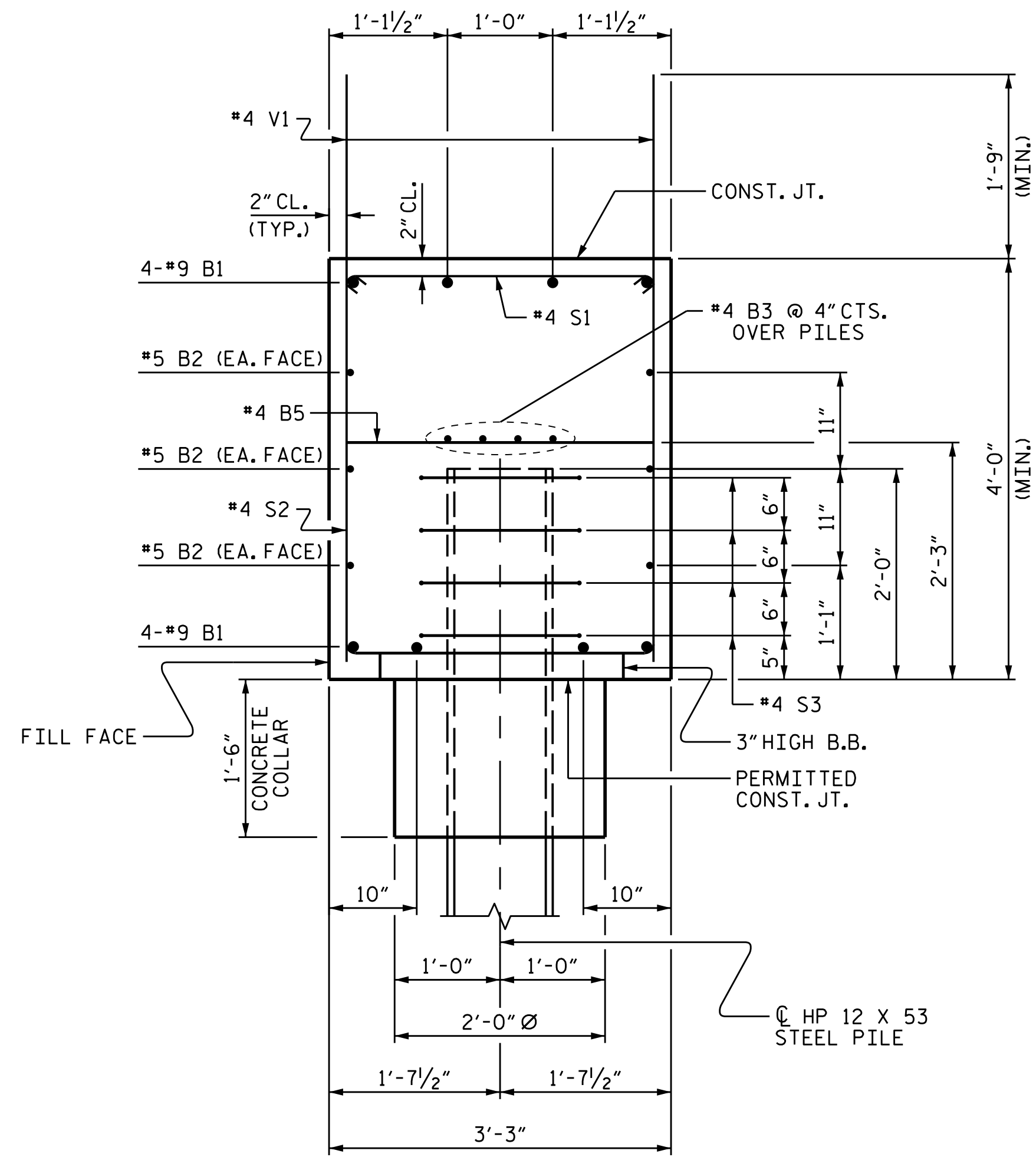


BAGGED STONE AND PIPE SHALL BE PLACED IMMEDIATELY AFTER COMPLETION OF END BENT EXCAVATION. PIPE MAY BE EITHER CONCRETE, CORRUGATED STEEL, CORRUGATED ALUMINUM ALLOY, OR CORRUGATED PLASTIC. PERFORATED PIPE WILL NOT BE ALLOWED.

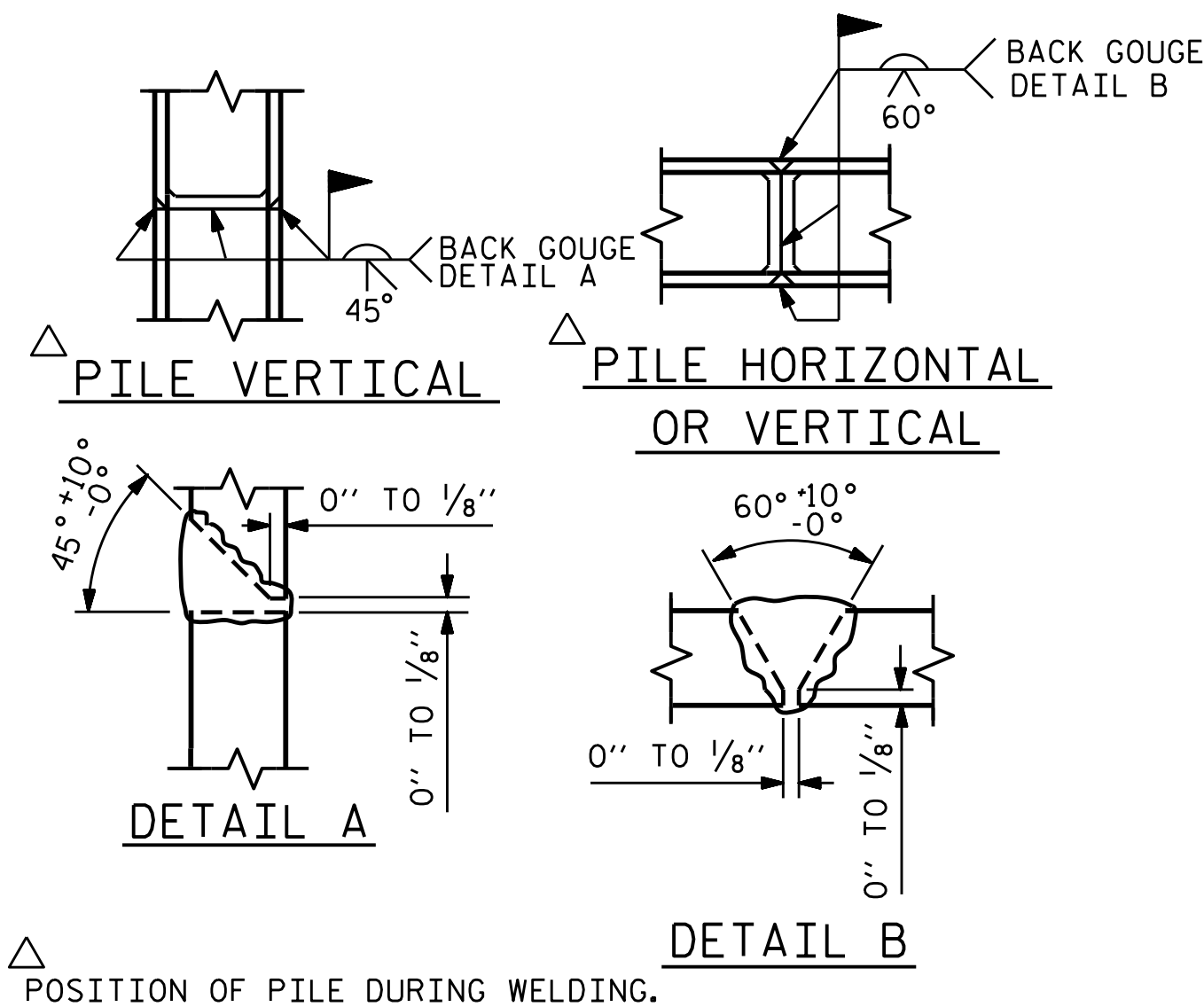
BAGGED STONE SHALL REMAIN IN PLACE UNTIL THE ENGINEER DIRECTS THAT IT BE REMOVED. THE CONTRACTOR SHALL REMOVE AND DISPOSE OF SILT ACCUMULATIONS AT BAGGED STONE WHEN SO DIRECTED BY THE ENGINEER. BAGS SHALL BE REMOVED AND REPLACED WHENEVER THE ENGINEER DETERMINES THAT THEY HAVE DETERIORATED AND LOST THEIR EFFECTIVENESS.

NO SEPARATE PAYMENT WILL BE MADE FOR THIS WORK AND THE ENTIRE COST OF THIS WORK SHALL BE INCLUDED IN THE UNIT CONTRACT PRICE BID FOR THE SEVERAL PAY ITEMS.

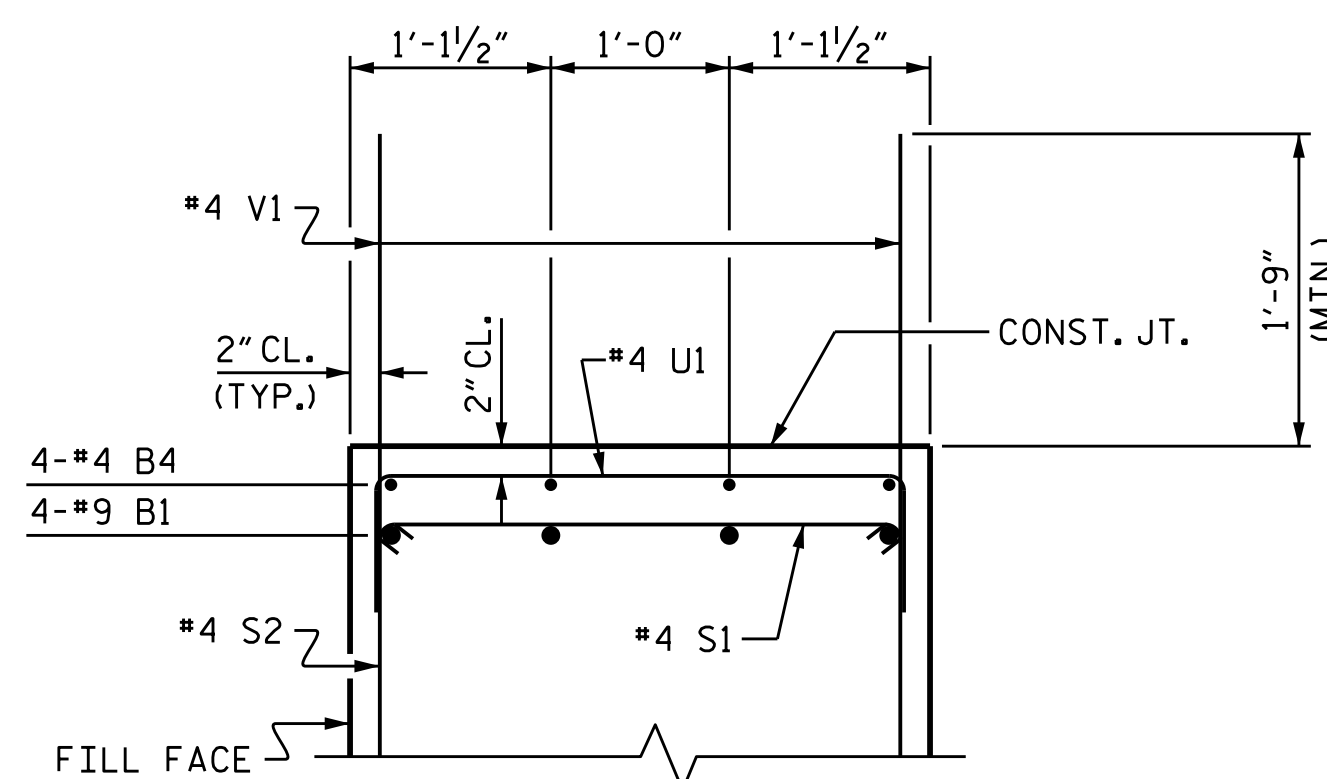
### TEMPORARY DRAINAGE AT END BENT



SECTION A-A

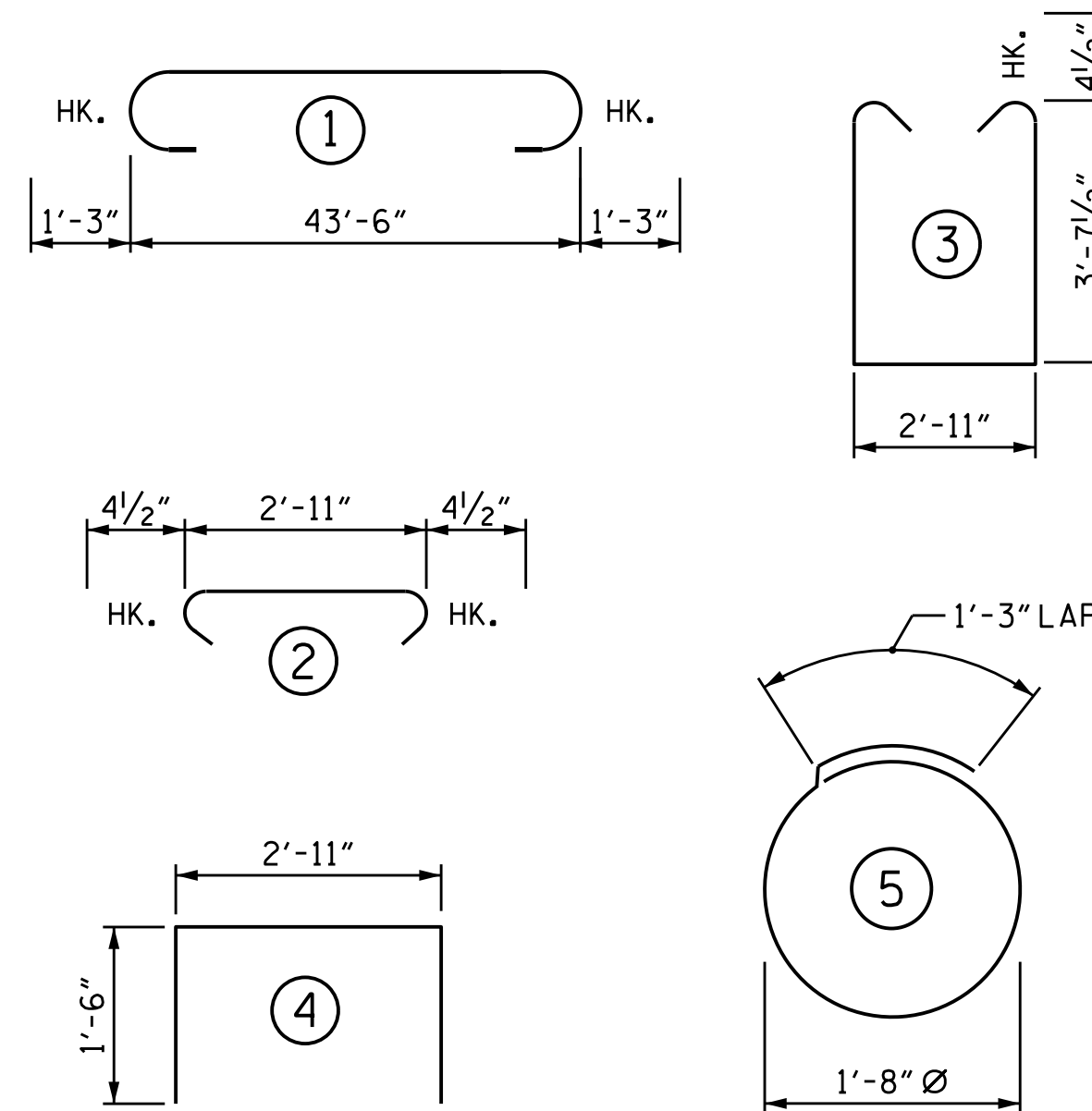


PILE SPLICE DETAILS



PARTIAL SECTION B-B

### BAR TYPES



ALL BAR DIMENSIONS ARE OUT TO OUT.

### BILL OF MATERIAL

#### END BENT No. 1

BAR	NO.	SIZE	TYPE	LENGTH	WEIGHT
B1	8	#9	1	46'-0"	1251
B2	6	#5	STR	43'-8"	273
B3	8	#4	STR	23'-1"	123
B4	4	#4	STR	18'-1"	48
B5	11	#4	STR	2'-11"	21
H1	18	#5	STR	15'-2"	285
H2	16	#5	STR	14'-2"	236
S1	42	#4	2	3'-8"	103
S2	42	#4	3	10'-11"	306
S3	20	#4	5	6'-6"	87
U1	12	#4	4	5'-11"	47
V1	136	#4	STR	6'-3"	568

REINFORCING STEEL 3348 LBS.

CLASS A CONCRETE

\* POUR #1 (CAP, LOWER PART OF WINGS & CONCRETE COLLARS)

TOTAL 27.2 C.Y.

HP 12 X 53 STEEL PILES  
NO. 5 105 LIN. FT.

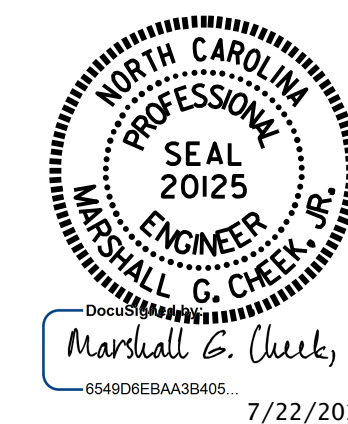
\* CONCRETE QUANTITY FOR UPPER PART OF WINGS IS INCLUDED IN POUR #4 OF SUPERSTRUCTURE.

PROJECT NO. R-2603  
WILKES COUNTY  
 STATION: 117+35.00 -L-

SHEET 3 OF 3

STATE OF NORTH CAROLINA  
 DEPARTMENT OF TRANSPORTATION  
 RALEIGH

SUBSTRUCTURE  
 INTEGRAL  
 END BENT No. 1



DRAWN BY : B.N. GRADY DATE : 12/14  
 CHECKED BY : H.T. BARBOUR DATE : 2/15  
 DESIGN ENGINEER OF RECORD: R.Z. DEAN DATE : 7/15

21-JUL-2015 08:32  
 R:\Structures\Final Plans\Str#2\R2603.SD.E\*.02.dgn  
 bngrady

REVISIONS						SHEET NO.
NO.	BY:	DATE:	NO.	BY:	DATE:	S-37
1			3			TOTAL SHEETS
2			4			47

STR. #2