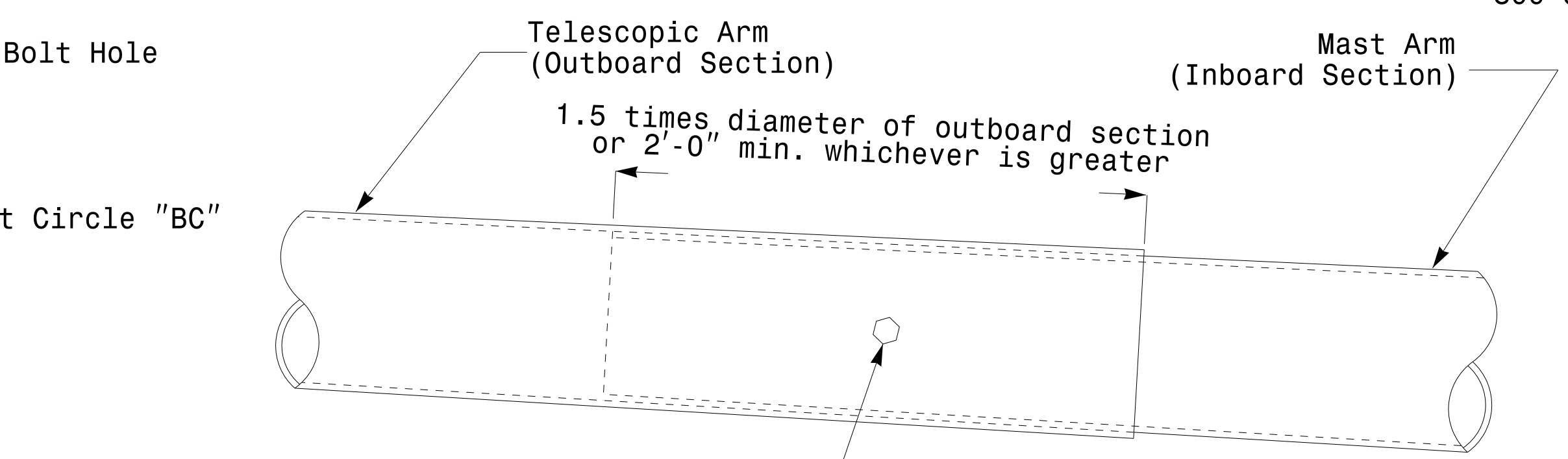
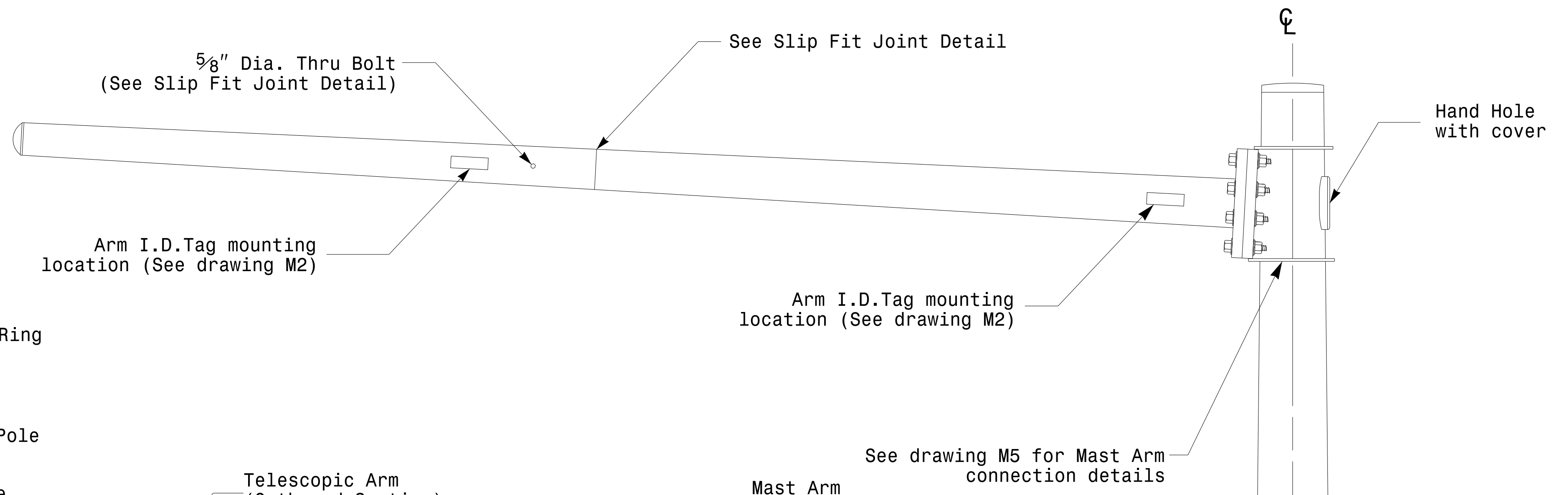
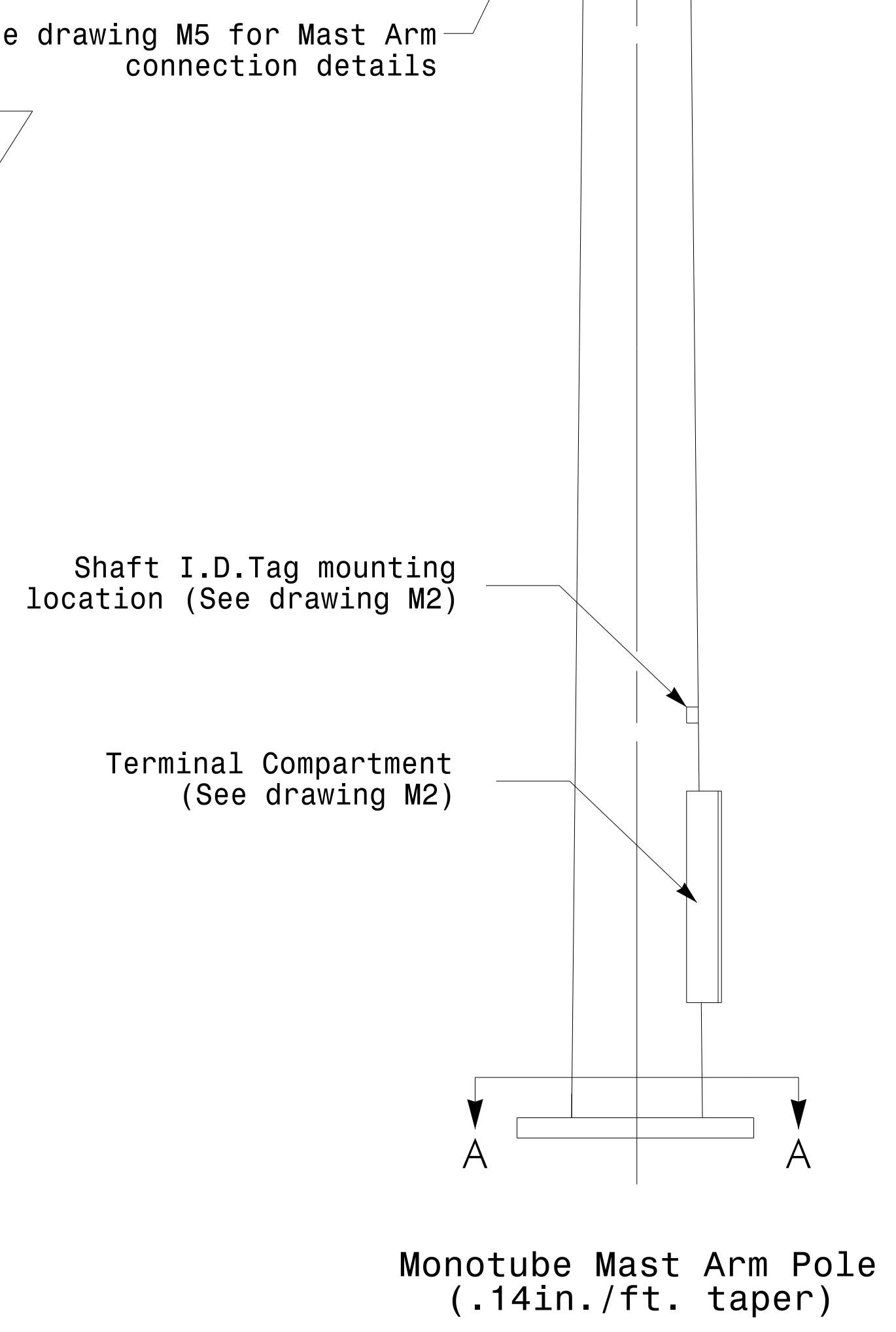


Section A-A  
(See drawing M 2)  
**Pole Base Plate**

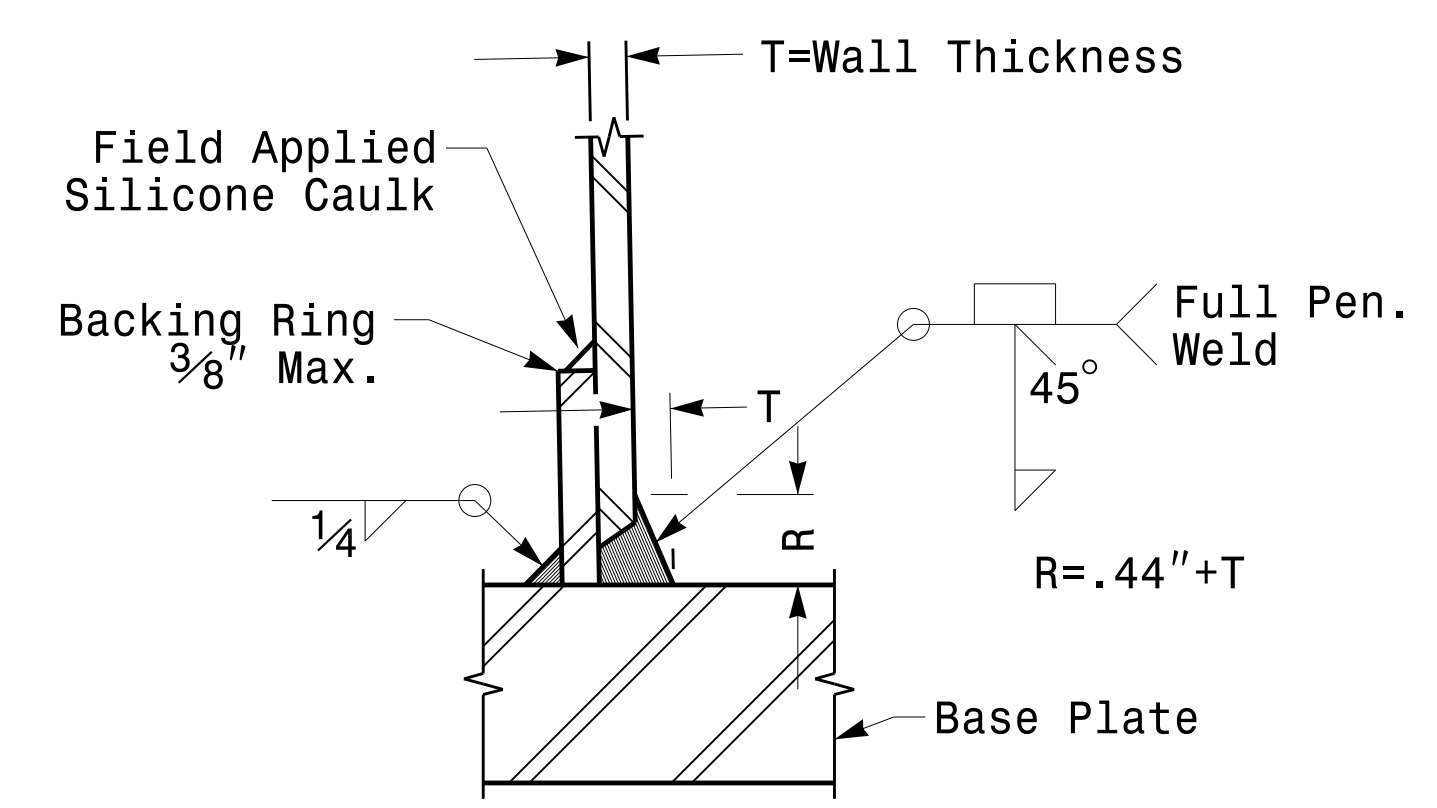


3/4" Factory Drilled Hole in Outboard Tube.  
Field Drill Inboard Tube.  
5/8" Galvanized Thru Stud with  
(2) Hex. Locknuts Each.

**Slip Fit Joint Detail for Mast Arm**

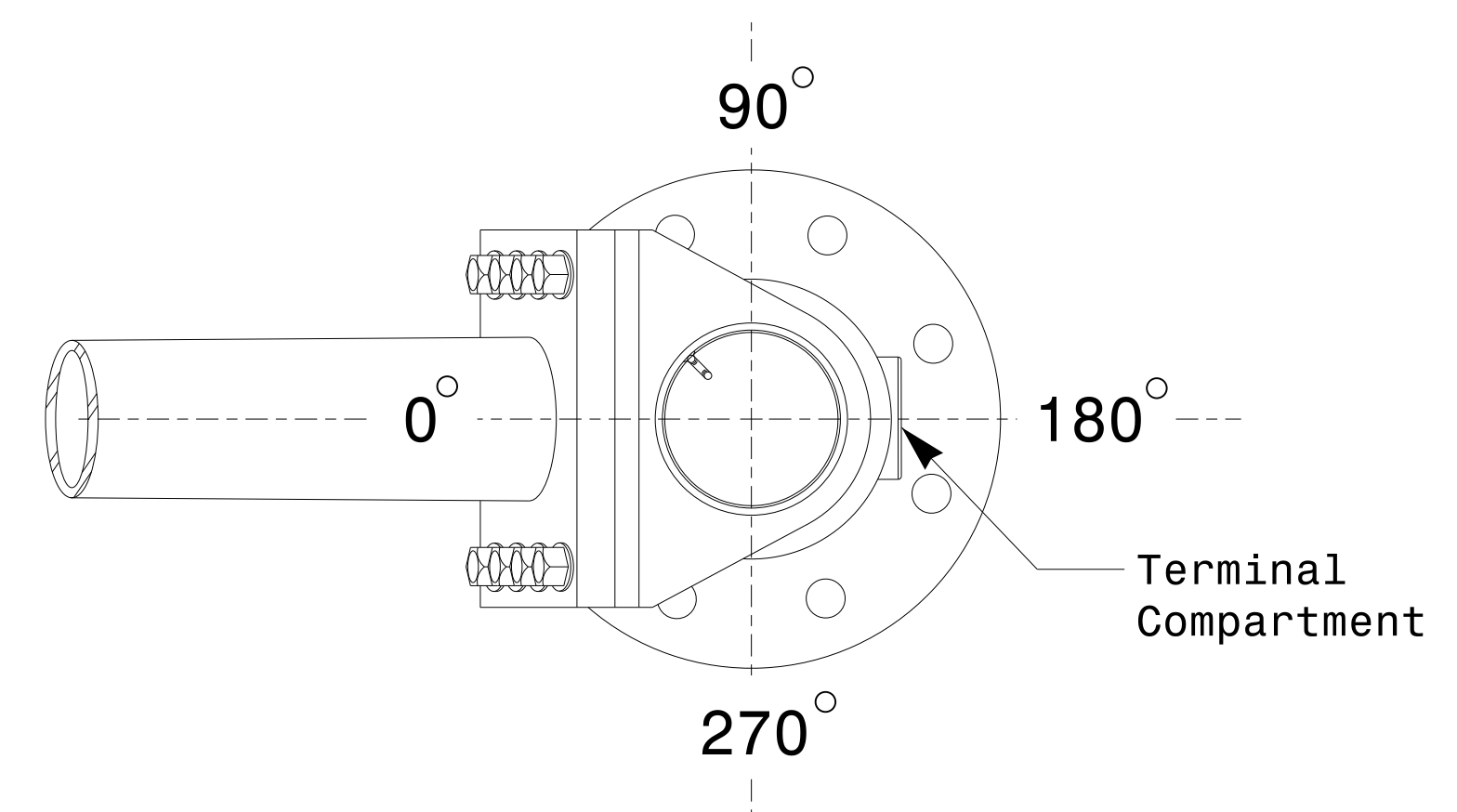


Monotube Mast Arm Pole  
(.14in./ft. taper)



Section B-B  
(Pole Attachment to Base Plate)

**Full-Penetration Groove Weld Detail**



**Mast Arm Radial Orientation**

	<p>Typical Fabrication Details for Mast Arm Poles</p>		
	<p>PLAN DATE: AUGUST 2013</p>	<p>DESIGNED BY: C.F. ANDREWS</p>	
<p>750 N. Greenfield Pkwy, Garner, NC 27529</p>	<p>PREPARED BY: N. BITTING</p>	<p>REVIEWED BY: D.C. SARKAR</p>	<p>8/26/2014</p>
<p>SCALE: 0 NA NONE</p>	<p>REVISIONS</p>	<p>INIT. DATE</p>	<p>SIG. INVENTORY NO.</p>

26-AUG-2014 08:50  
 S:\TDS\115\SIGNAL\Signal Design Section\Eastern Region\M\ Sheets\2012\_M4\_Fab\_Details\MastArms.dgn  
 T:\jll\cwy

**Fabrication Details – Mast Arm Poles**