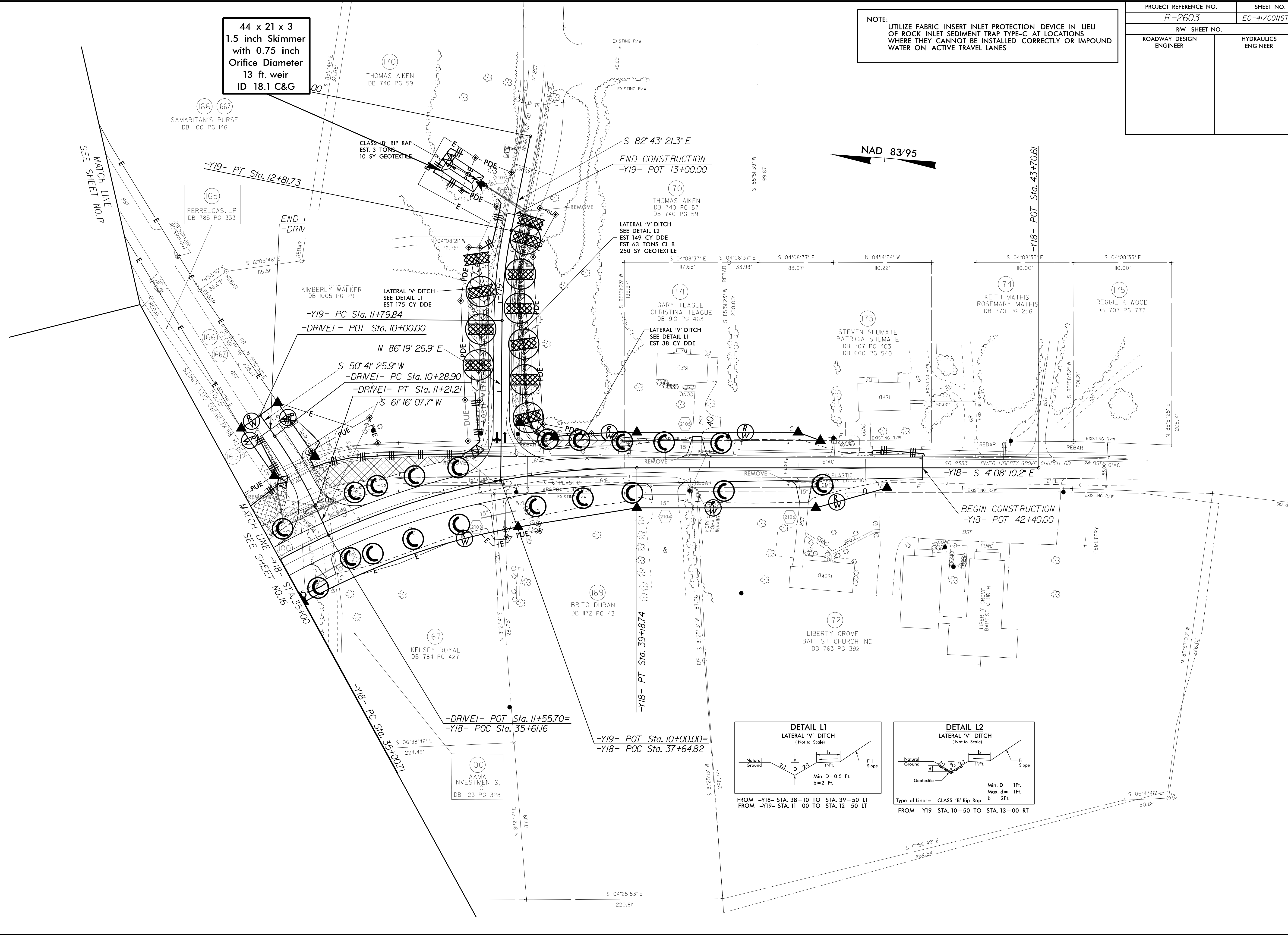


PROJECT REFERENCE NO.	SHEET NO.
R-2603	EC-41/CONST.20
RW SHEET NO.	
ROADWAY DESIGN ENGINEER	HYDRAULICS ENGINEER

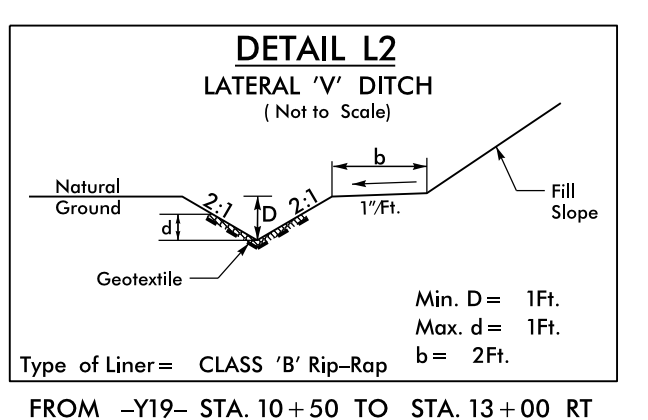
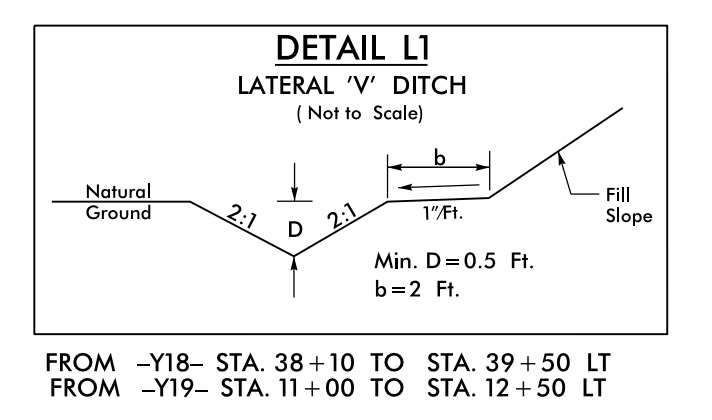
NOTE:
 UTILIZE FABRIC INSERT INLET PROTECTION DEVICE IN LIEU OF ROCK INLET SEDIMENT TRAP TYPE-C AT LOCATIONS WHERE THEY CANNOT BE INSTALLED CORRECTLY OR IMPOUND WATER ON ACTIVE TRAVEL LANES

44 x 21 x 3
 1.5 inch Skimmer
 with 0.75 inch
 Orifice Diameter
 13 ft. weir
 ID 18.1 C&G

8/17/99
 04 JUN 2016 15:06
 R:\env\form\ec\2603\B2603-EC.psh.20.dgn
 R:\env\form\ec\2603\B2603-EC.psh.20.dgn
 R:\env\form\ec\2603\B2603-EC.psh.20.dgn



NAD 83/95



100
 AAMA INVESTMENTS, LLC
 DB 1123 PG 328

169
 BRITO DURAN
 DB 1172 PG 43

167
 KELSEY ROYAL
 DB 784 PG 427

172
 LIBERTY GROVE BAPTIST CHURCH INC
 DB 763 PG 392

LIBERTY GROVE BAPTIST CHURCH

CEMETERY

173
 STEVEN SHUMATE
 PATRICIA SHUMATE
 DB 707 PG 403
 DB 660 PG 540

174
 KEITH MATHIS
 ROSEMARY MATHIS
 DB 770 PG 256

175
 REGGIE K WOOD
 DB 707 PG 777

171
 GARY TEAGUE
 CHRISTINA TEAGUE
 DB 910 PG 463

165
 FERRELGAS, LP
 DB 785 PG 333

166
 166Z
 SAMARITAN'S PURSE
 DB 1100 PG 146

170
 THOMAS AIKEN
 DB 740 PG 59

170
 THOMAS AIKEN
 DB 740 PG 57
 DB 740 PG 59

166
 166Z
 SAMARITAN'S PURSE
 DB 1100 PG 146

166
 166Z
 SAMARITAN'S PURSE
 DB 1100 PG 146

MATCH LINE
 SEE SHEET NO.17

MATCH LINE
 SEE SHEET NO.16

BEGIN CONSTRUCTION
 -Y18- POT 42+40.00

END CONSTRUCTION
 -Y19- POT 13+00.00

-Y19- PC Sta. 11+79.84
 -DRIVE1 - POT Sta. 10+00.00

-DRIVE1- PC Sta. 10+28.90
 -DRIVE1- PT Sta. 11+21.21

-DRIVE1- POT Sta. 11+55.70=
 -Y18- POC Sta. 35+61.16

-Y19- POT Sta. 10+00.00=
 -Y18- POC Sta. 37+64.82

-Y18- PC Sta. 35+100.71

-Y18- PT Sta. 39+187.4

-Y18- POT Sta. 43+70.61

-Y18- S 4°08'10.2" E

-Y19- PT Sta. 12+81.73

END (-DRV

END (-DRV

END (-DRV

END (-DRV

END (-DRV

END (-DRV

END (-DRV

END (-DRV

END (-DRV