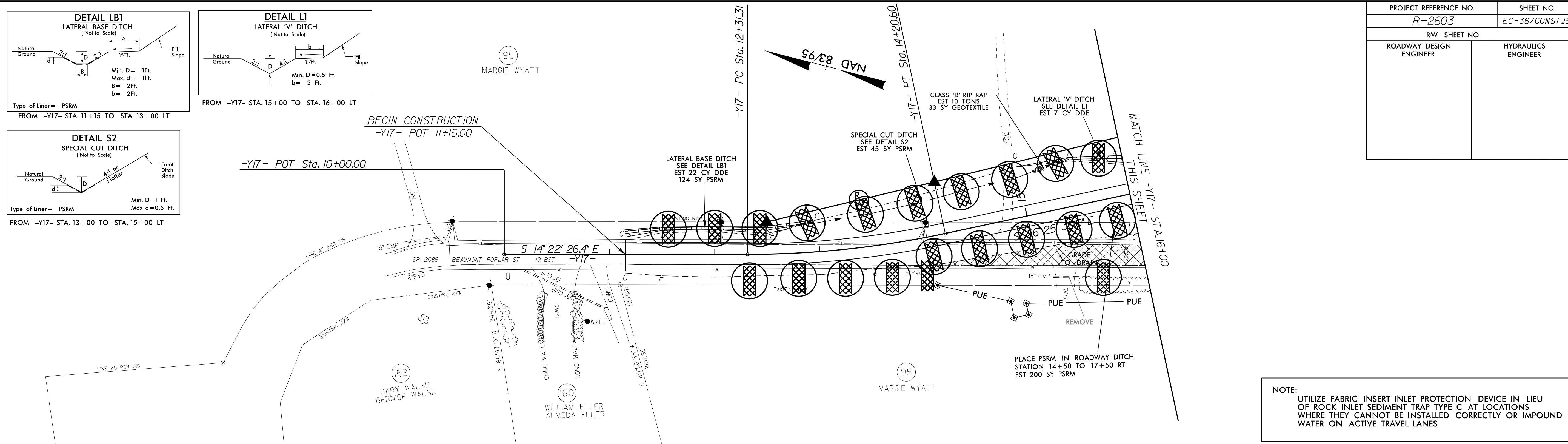
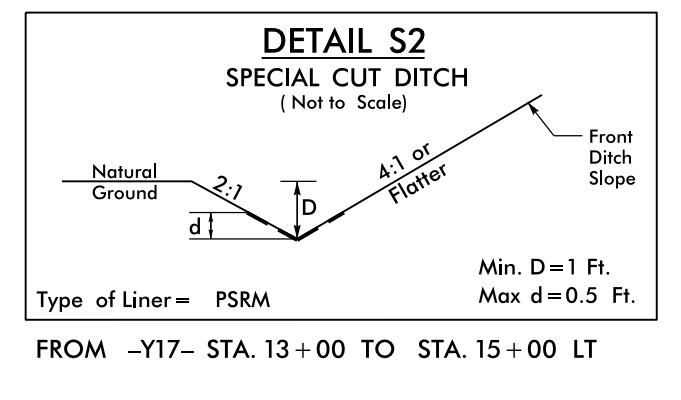
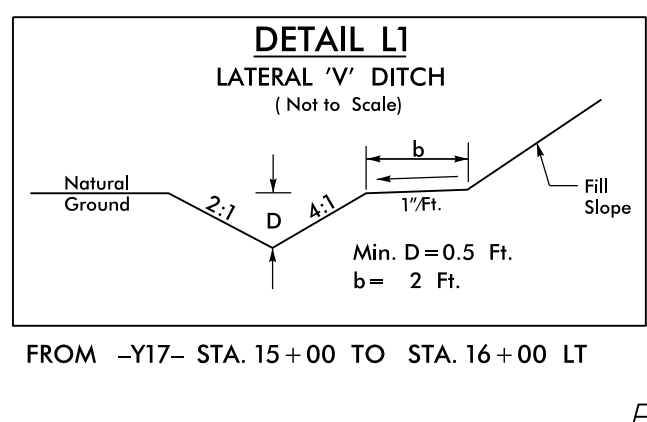
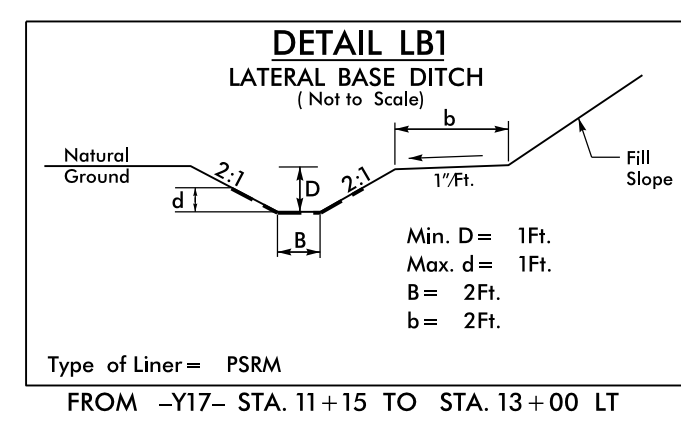
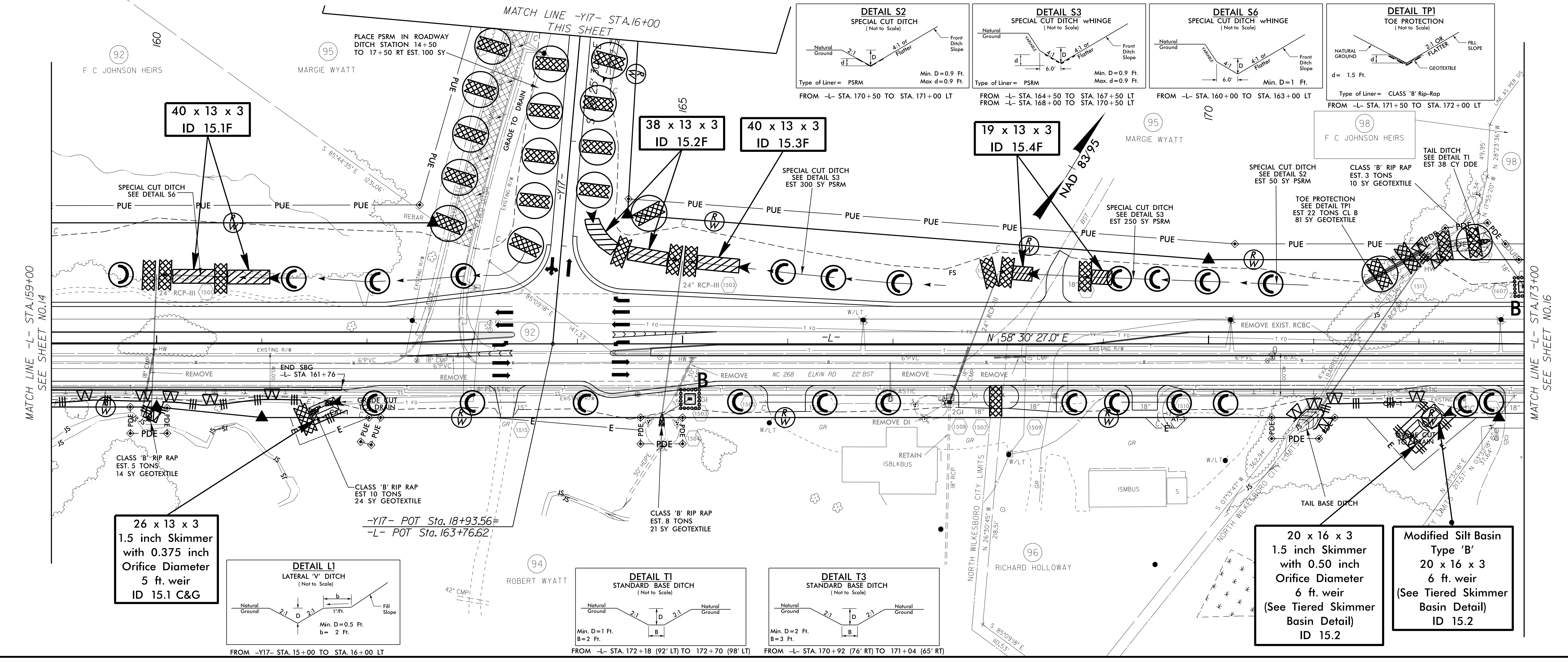


PROJECT REFERENCE NO. R-2603	SHEET NO. EC-36/CONST.15
RW SHEET NO.	
ROADWAY DESIGN ENGINEER	HYDRAULICS ENGINEER



NOTE:
UTILIZE FABRIC INSERT INLET PROTECTION DEVICE IN LIEU OF ROCK INLET SEDIMENT TRAP TYPE-C AT LOCATIONS WHERE THEY CANNOT BE INSTALLED CORRECTLY OR IMPOUND WATER ON ACTIVE TRAVEL LANES



04 JUN 2015 13:34 D:\s191\B2603-EC.psh15.dgn
 R:\New\Information\A1\REN1721413