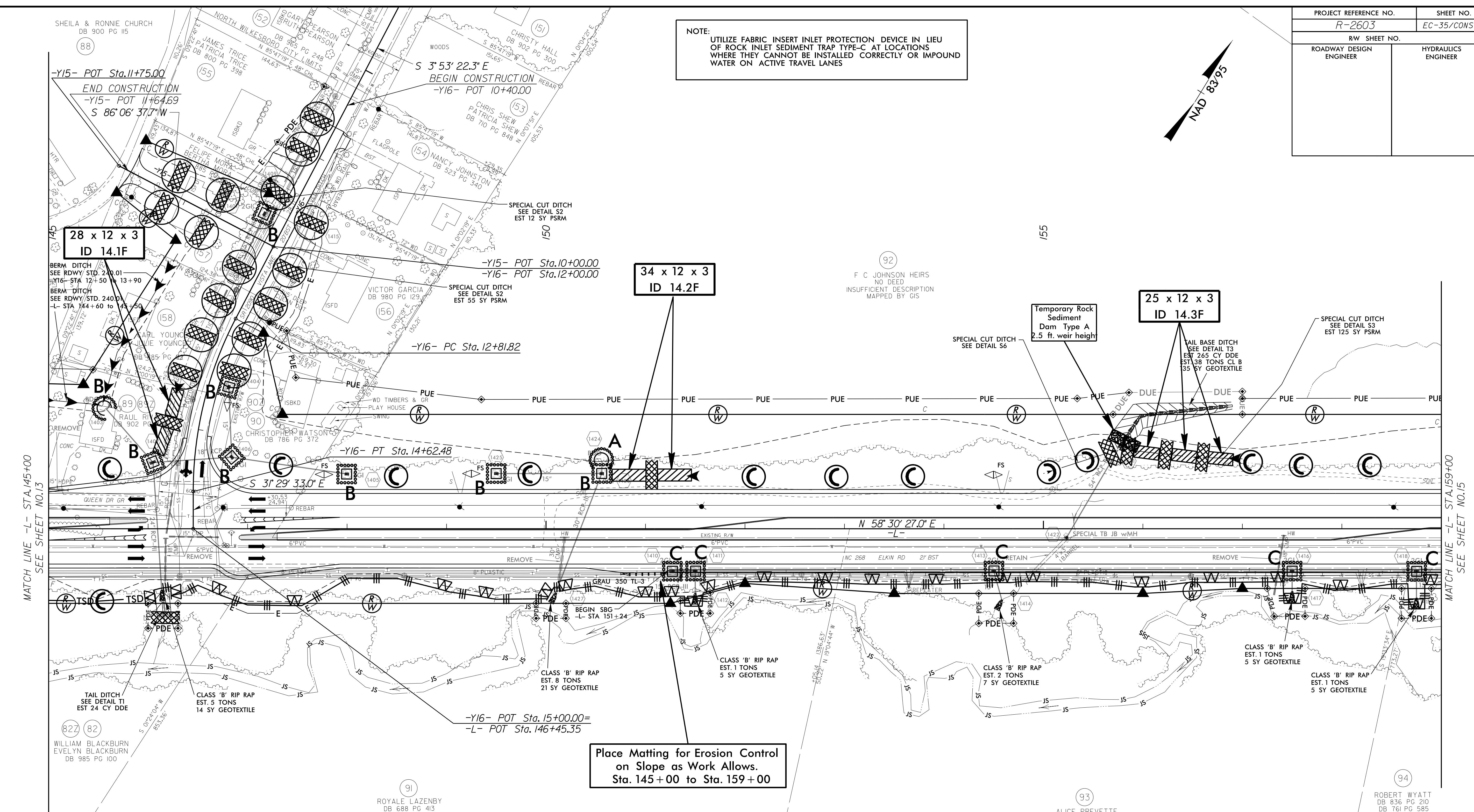
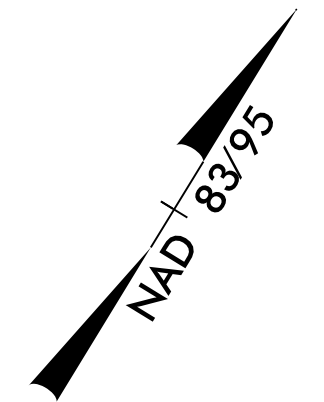


PROJECT REFERENCE NO. <i>R-2603</i>		SHEET NO. <i>EC-35/CONST.14</i>	
RW SHEET NO.			
ROADWAY DESIGN ENGINEER		HYDRAULICS ENGINEER	

NOTE:
UTILIZE FABRIC INSERT INLET PROTECTION DEVICE IN LIEU OF ROCK INLET SEDIMENT TRAP TYPE-C AT LOCATIONS WHERE THEY CANNOT BE INSTALLED CORRECTLY OR IMPOUND WATER ON ACTIVE TRAVEL LANES

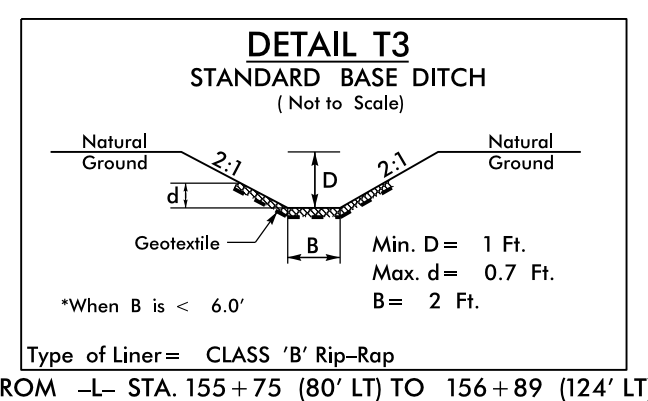
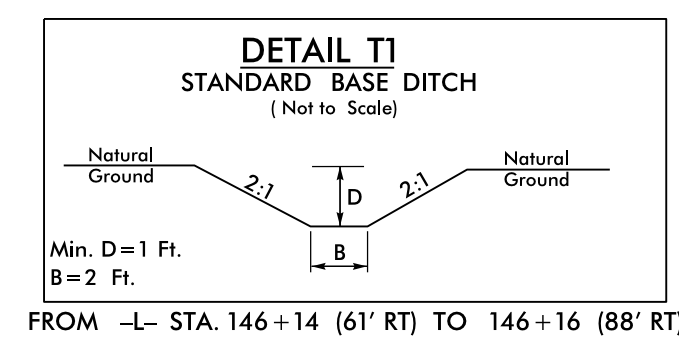
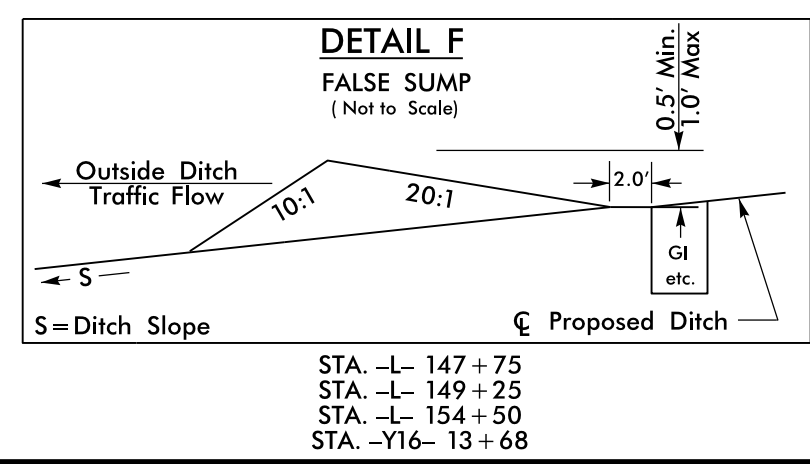
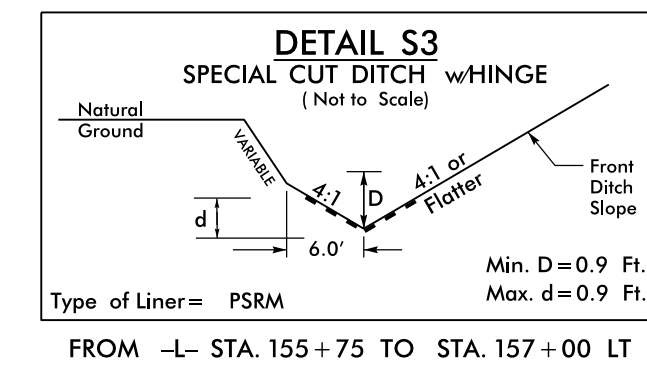
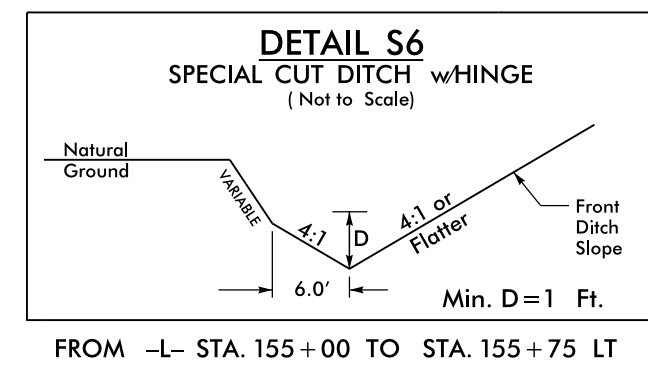
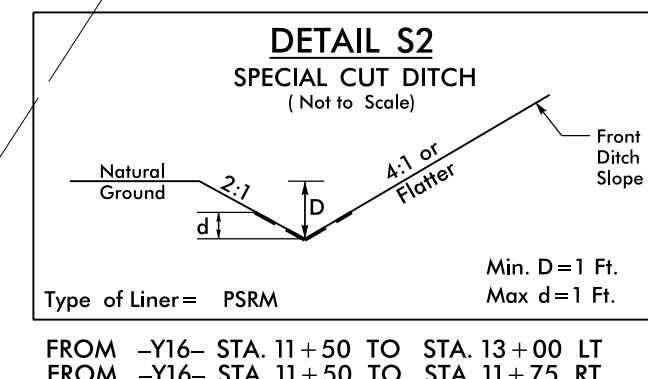


28 x 12 x 3
ID 14.1F

34 x 12 x 3
ID 14.2F

25 x 12 x 3
ID 14.3F

Place Matting for Erosion Control
on Slope as Work Allows.
Sta. 145+00 to Sta. 159+00



04 JUN 2015 12:42
 R:\env\form\ec\14\REN\2603-EC.psh14.dgn
 REN\2603-EC.psh14.dgn

MATCH LINE -L- STA.145+00
SEE SHEET NO.13

MATCH LINE -L- STA.159+00
SEE SHEET NO.15