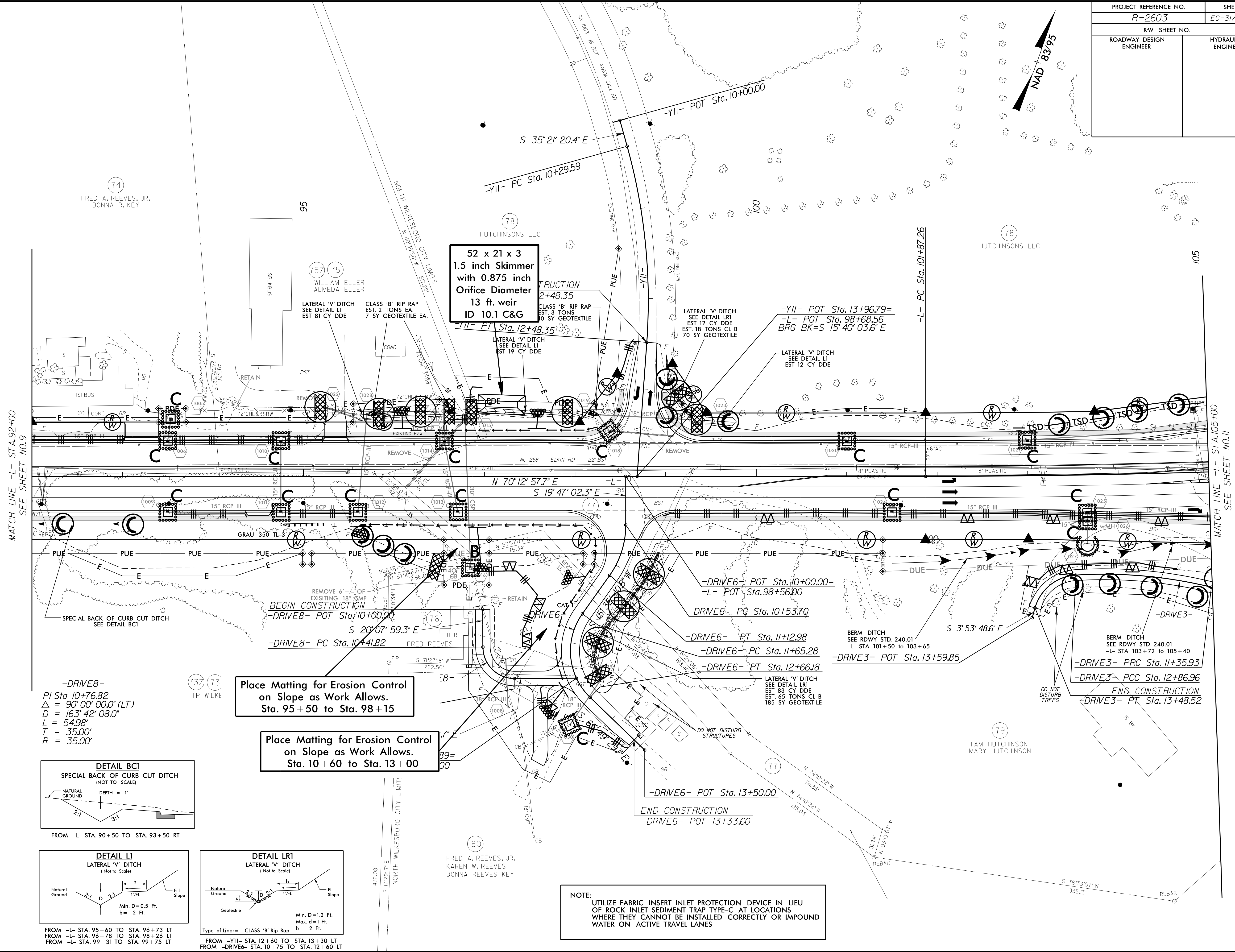
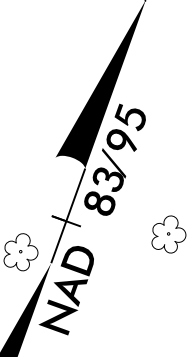


|                                 |                             |
|---------------------------------|-----------------------------|
| PROJECT REFERENCE NO.<br>R-2603 | SHEET NO.<br>EC-31/CONST.10 |
| RW SHEET NO.                    |                             |
| ROADWAY DESIGN ENGINEER         | HYDRAULICS ENGINEER         |

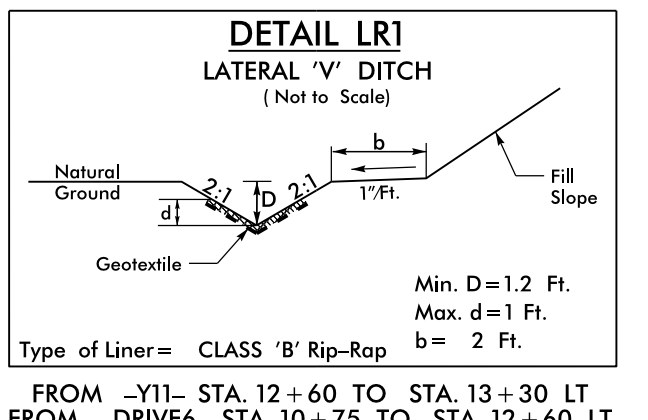
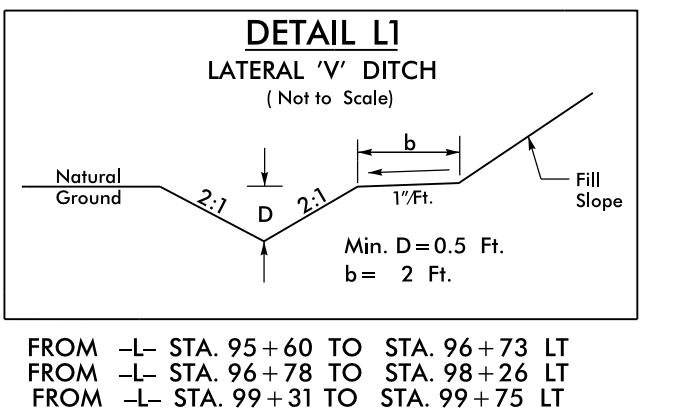
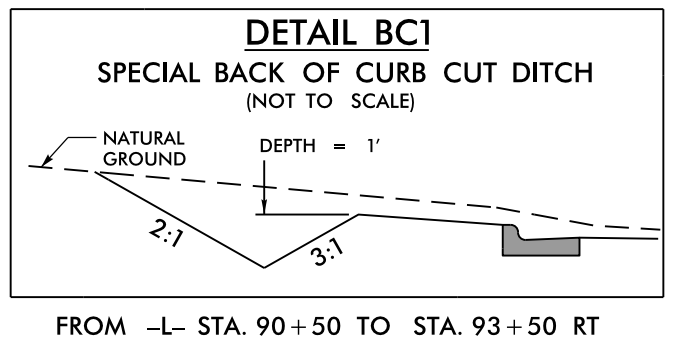


**52 x 21 x 3  
1.5 inch Skimmer  
with 0.875 inch  
Orifice Diameter  
13 ft. weir  
ID 10.1 C&G**

**Place Matting for Erosion Control  
on Slope as Work Allows.  
Sta. 95+50 to Sta. 98+15**

**Place Matting for Erosion Control  
on Slope as Work Allows.  
Sta. 10+60 to Sta. 13+00**

**-DRIVE8-**  
PI Sta. 10+76.82  
 $\Delta = 90^\circ 00' 00.0''$  (LT)  
D = 163' 42" 08.0"  
L = 54.98'  
T = 35.00'  
R = 35.00'



**NOTE:**  
UTILIZE FABRIC INSERT INLET PROTECTION DEVICE IN LIEU  
OF ROCK INLET SEDIMENT TRAP TYPE-C AT LOCATIONS  
WHERE THEY CANNOT BE INSTALLED CORRECTLY OR IMPOUND  
WATER ON ACTIVE TRAVEL LANES

8/17/99

94 JUN-2015 11:45 I:\45\Drawings\B2603-EC.psh10.dgn  
 R:\env\form\at\REN7271413