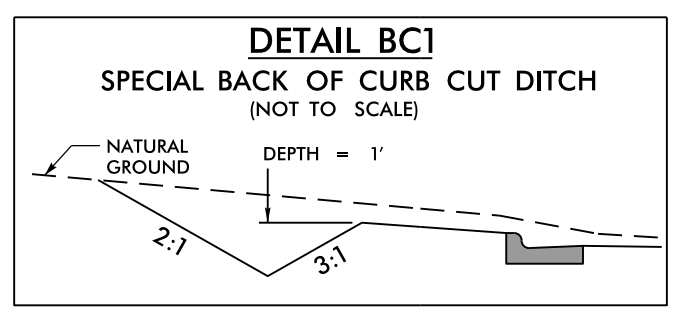
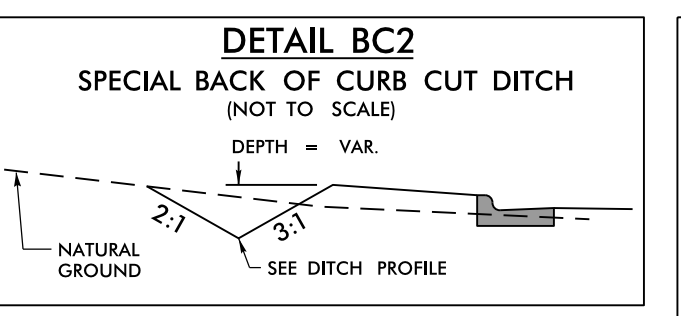


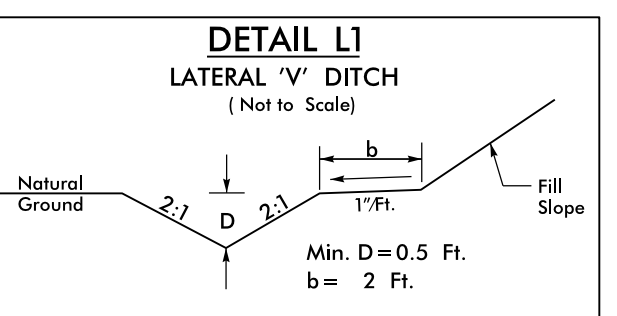
PROJECT REFERENCE NO. R-2603	SHEET NO. EC-30/CONST.9
RW SHEET NO.	
ROADWAY DESIGN ENGINEER	HYDRAULICS ENGINEER



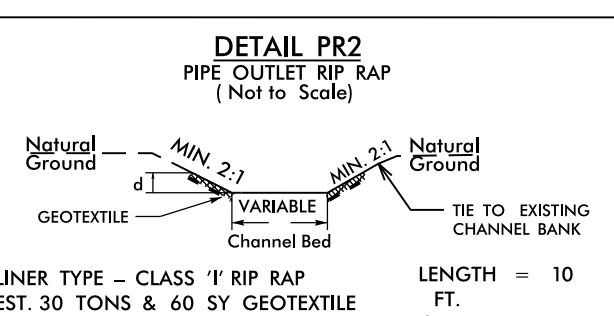
FROM -L- STA. 82+00 TO STA. 83+50 LT
 FROM -L- STA. 83+80 TO STA. 84+50 LT
 FROM -L- STA. 84+80 TO STA. 85+80 LT
 FROM -L- STA. 90+00 TO STA. 90+65 RT
 FROM -L- STA. 91+19 TO STA. 93+50 RT



FROM -L- STA. 89+14 TO STA. 90+00 RT

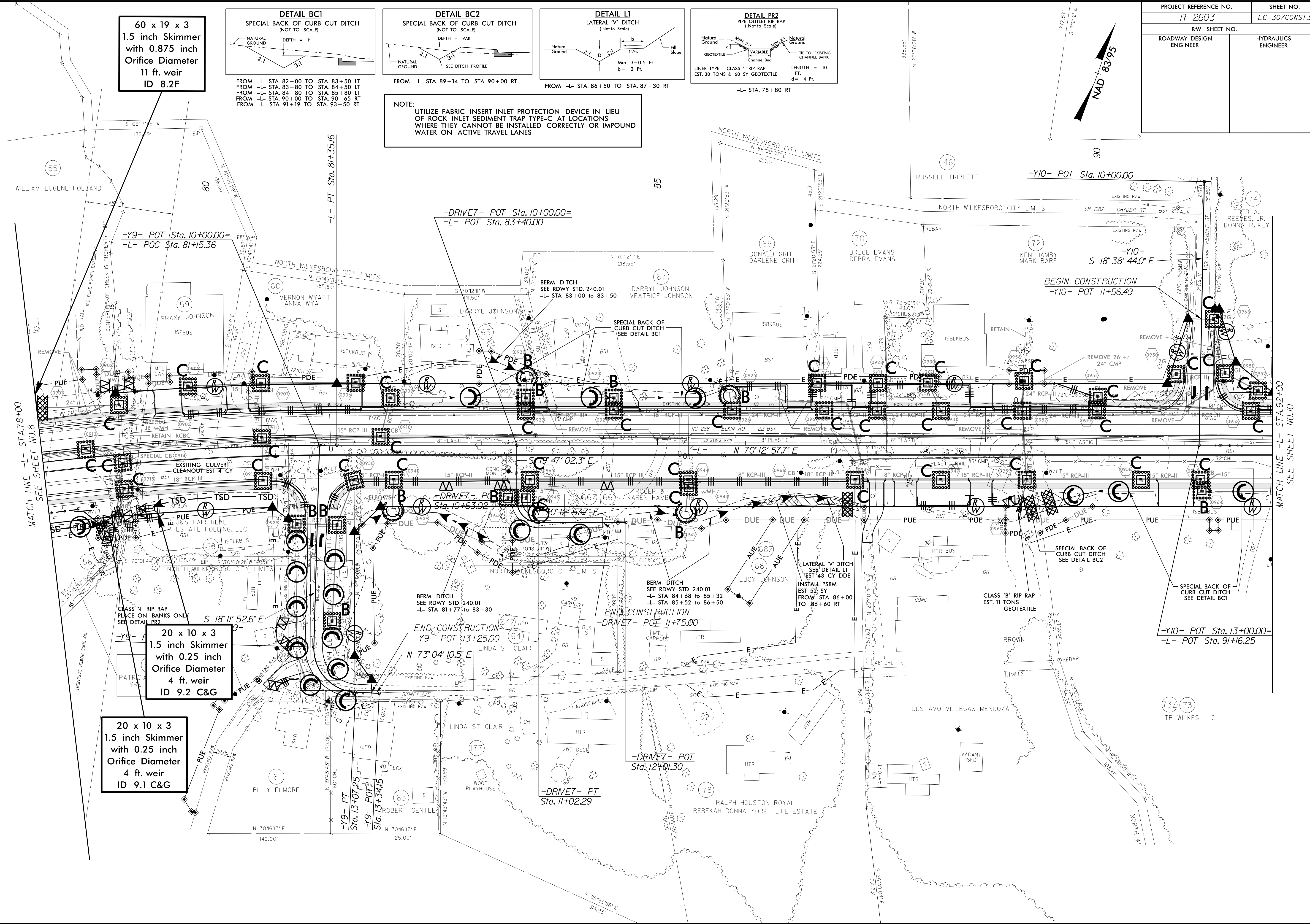
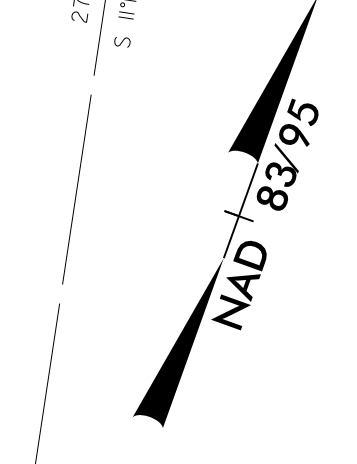


FROM -L- STA. 86+50 TO STA. 87+30 RT



-L- STA. 78+80 RT

NOTE:
UTILIZE FABRIC INSERT INLET PROTECTION DEVICE IN LIEU OF ROCK INLET SEDIMENT TRAP TYPE 'C' AT LOCATIONS WHERE THEY CANNOT BE INSTALLED CORRECTLY OR IMPOUND WATER ON ACTIVE TRAVEL LANES



60 x 19 x 3
1.5 inch Skimmer
with 0.875 inch
Orifice Diameter
11 ft. weir
ID 8.2F

20 x 10 x 3
1.5 inch Skimmer
with 0.25 inch
Orifice Diameter
4 ft. weir
ID 9.2 C&G

20 x 10 x 3
1.5 inch Skimmer
with 0.25 inch
Orifice Diameter
4 ft. weir
ID 9.1 C&G

MATCH LINE -L- STA. 78+00
SEE SHEET NO. 8

MATCH LINE -L- STA. 92+00
SEE SHEET NO. 10

94 JUN-2015 11:20
R:\New\Information\B2603.EC.psh09.dgn