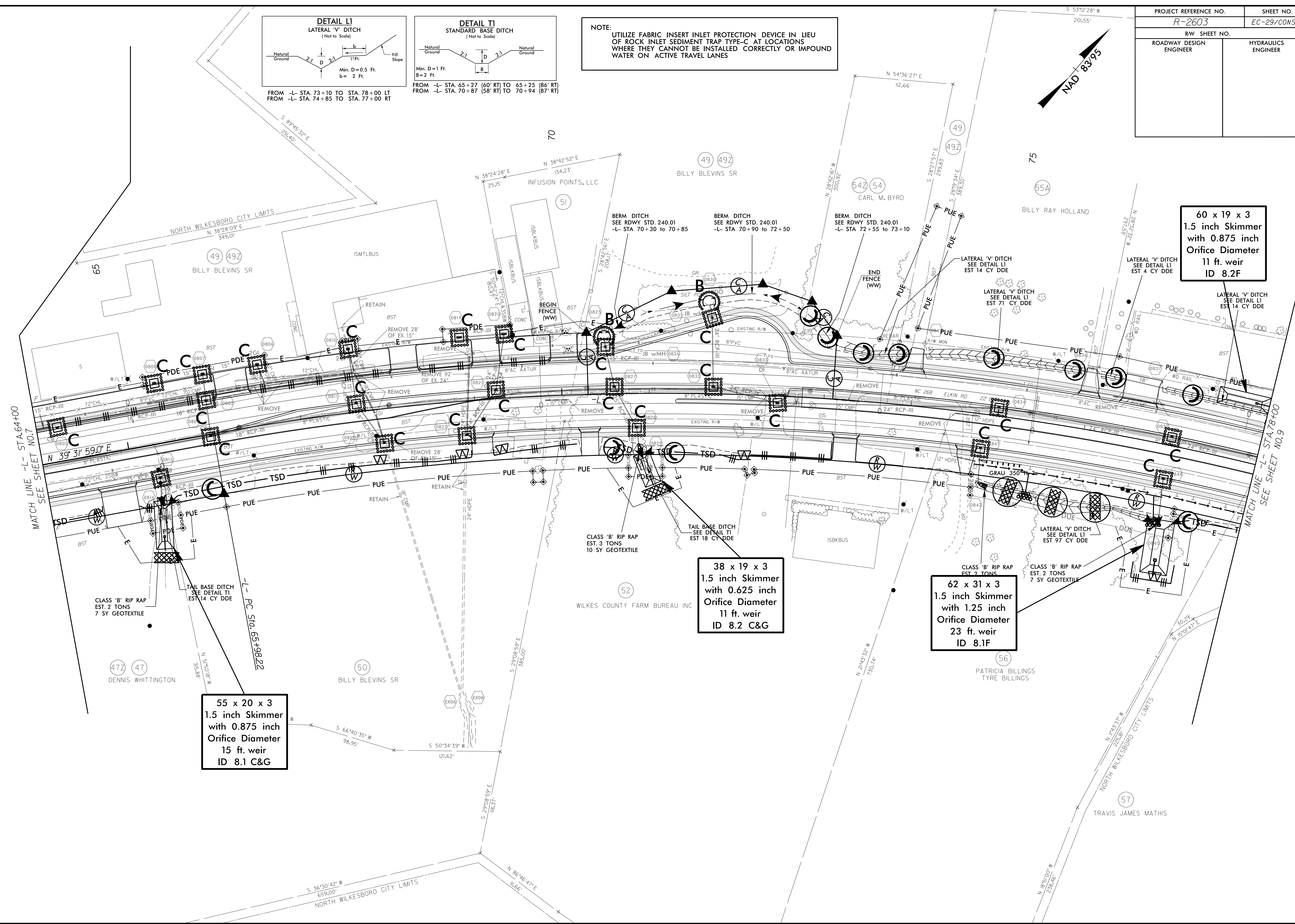
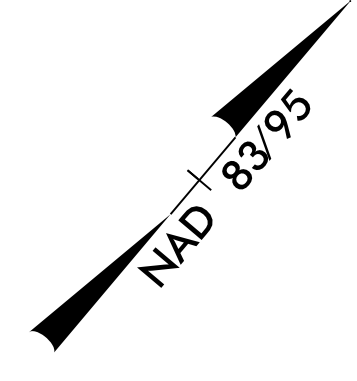


NOTE:
UTILIZE FABRIC INSERT INLET PROTECTION DEVICE IN LIEU OF ROCK INLET SEDIMENT TRAP TYPE-C AT LOCATIONS WHERE THEY CANNOT BE INSTALLED CORRECTLY OR IMPOUND WATER ON ACTIVE TRAVEL LANES

PROJECT REFERENCE NO. R-2603	SHEET NO. EC-29/CONST.B
RW SHEET NO.	
ROADWAY DESIGN ENGINEER	HYDRAULICS ENGINEER



60 x 19 x 3
1.5 inch Skimmer
with 0.875 inch
Orifice Diameter
11 ft. weir
ID 8.2F

38 x 19 x 3
1.5 inch Skimmer
with 0.625 inch
Orifice Diameter
11 ft. weir
ID 8.2 C&G

62 x 31 x 3
1.5 inch Skimmer
with 1.25 inch
Orifice Diameter
23 ft. weir
ID 8.1F

55 x 20 x 3
1.5 inch Skimmer
with 0.875 inch
Orifice Diameter
15 ft. weir
ID 8.1 C&G

CLASS 'B' RIP RAP
EST. 2 TONS
7 SY GEOTEXTILE

TAIL BASE DITCH
SEE DETAIL TI
EST 14 CY DDE

CLASS 'B' RIP RAP
EST. 3 TONS
10 SY GEOTEXTILE

TAIL BASE DITCH
SEE DETAIL TI
EST 18 CY DDE

CLASS 'B' RIP RAP
EST. 2 TONS

CLASS 'B' RIP RAP
EST. 2 TONS
7 SY GEOTEXTILE

MATCH LINE -L- STA. 64+00
SEE SHEET NO. 7

MATCH LINE -L- STA. 78+00
SEE SHEET NO. 9