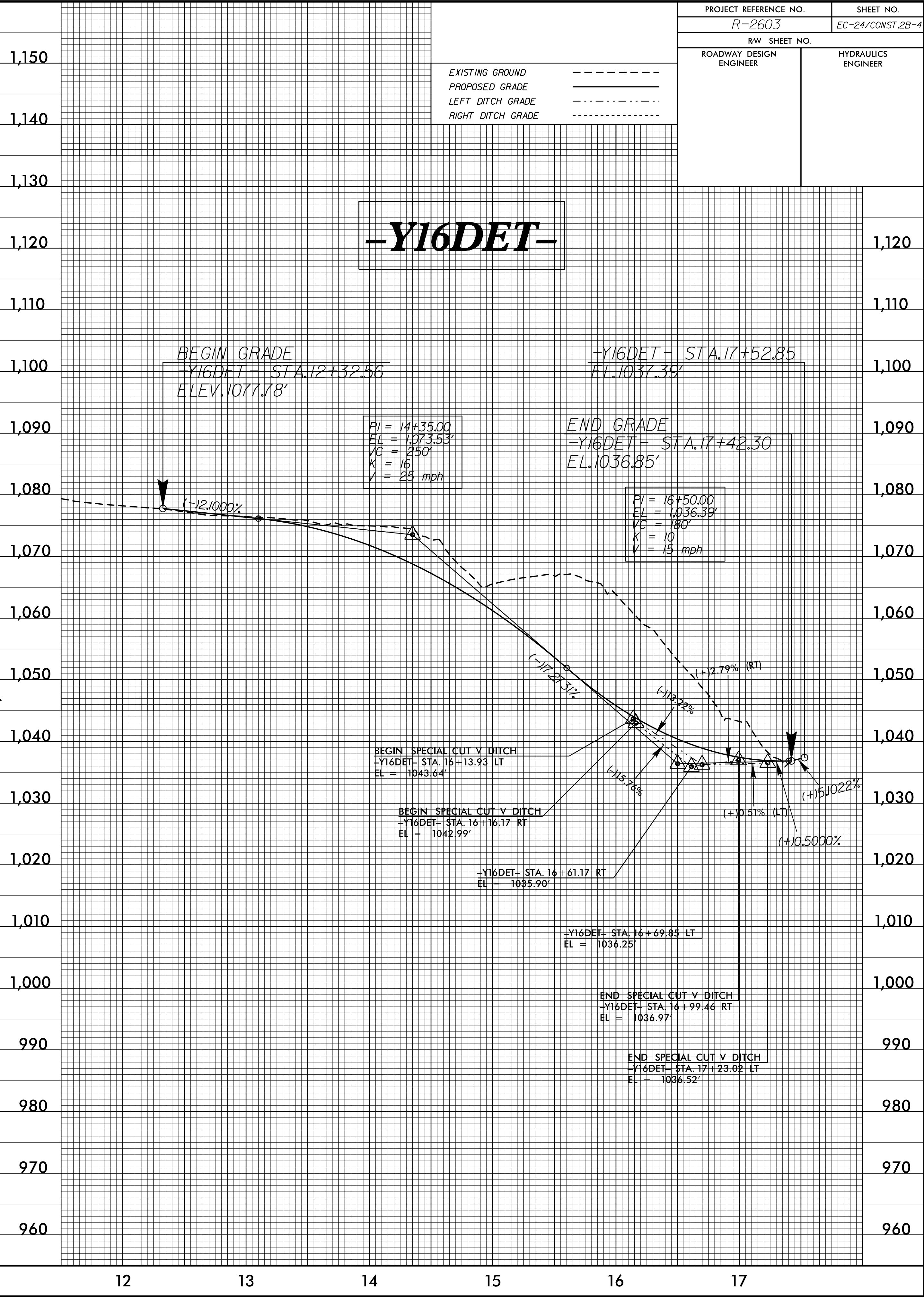
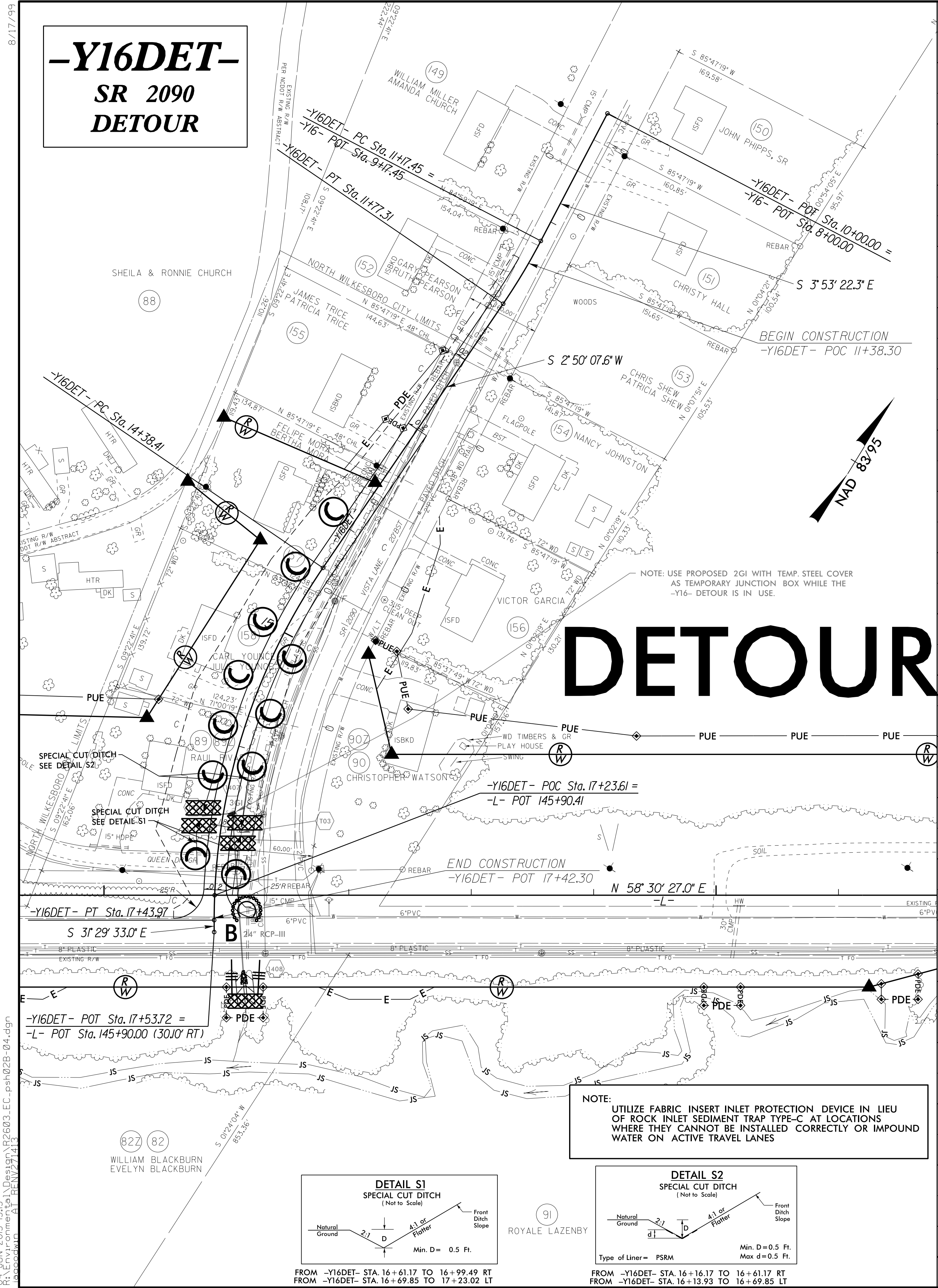


PROJECT REFERENCE NO.	SHEET NO.
R-2603	EC-24/CONST.2B-4
RW SHEET NO.	
ROADWAY DESIGN ENGINEER	HYDRAULICS ENGINEER

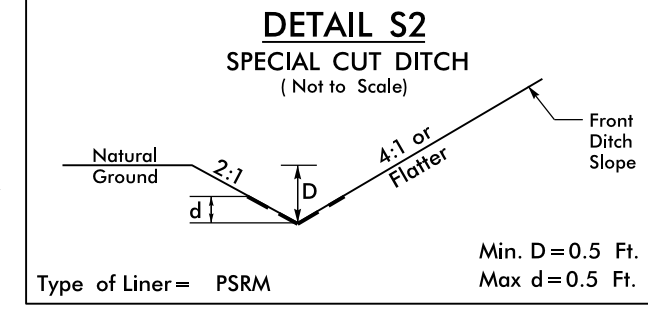
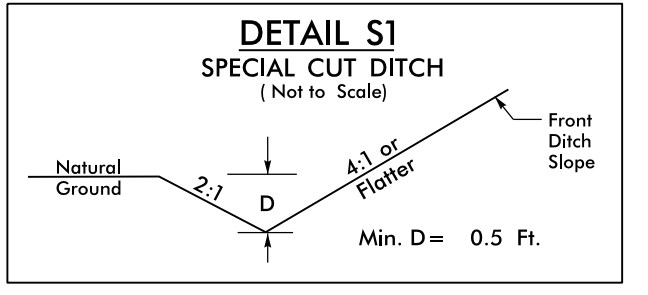
**-Y16DET-**  
SR 2090  
DETOUR

**-Y16DET-**

**DETOUR**



NOTE:  
UTILIZE FABRIC INSERT INLET PROTECTION DEVICE IN LIEU OF ROCK INLET SEDIMENT TRAP TYPE-C AT LOCATIONS WHERE THEY CANNOT BE INSTALLED CORRECTLY OR IMPOUND WATER ON ACTIVE TRAVEL LANES



FROM -Y16DET- STA. 16+61.17 TO 16+99.49 RT  
FROM -Y16DET- STA. 16+69.85 TO 17+23.02 LT

FROM -Y16DET- STA. 16+16.17 TO 16+61.17 RT  
FROM -Y16DET- STA. 16+13.93 TO 16+69.85 LT

8/17/99  
94 JUN-2015 15:15 \\D:\Projects\2603-EC.psh\2B-04.dgn  
R:\env\formal\AtoR\ENR\2603-EC.psh\2B-04.dgn