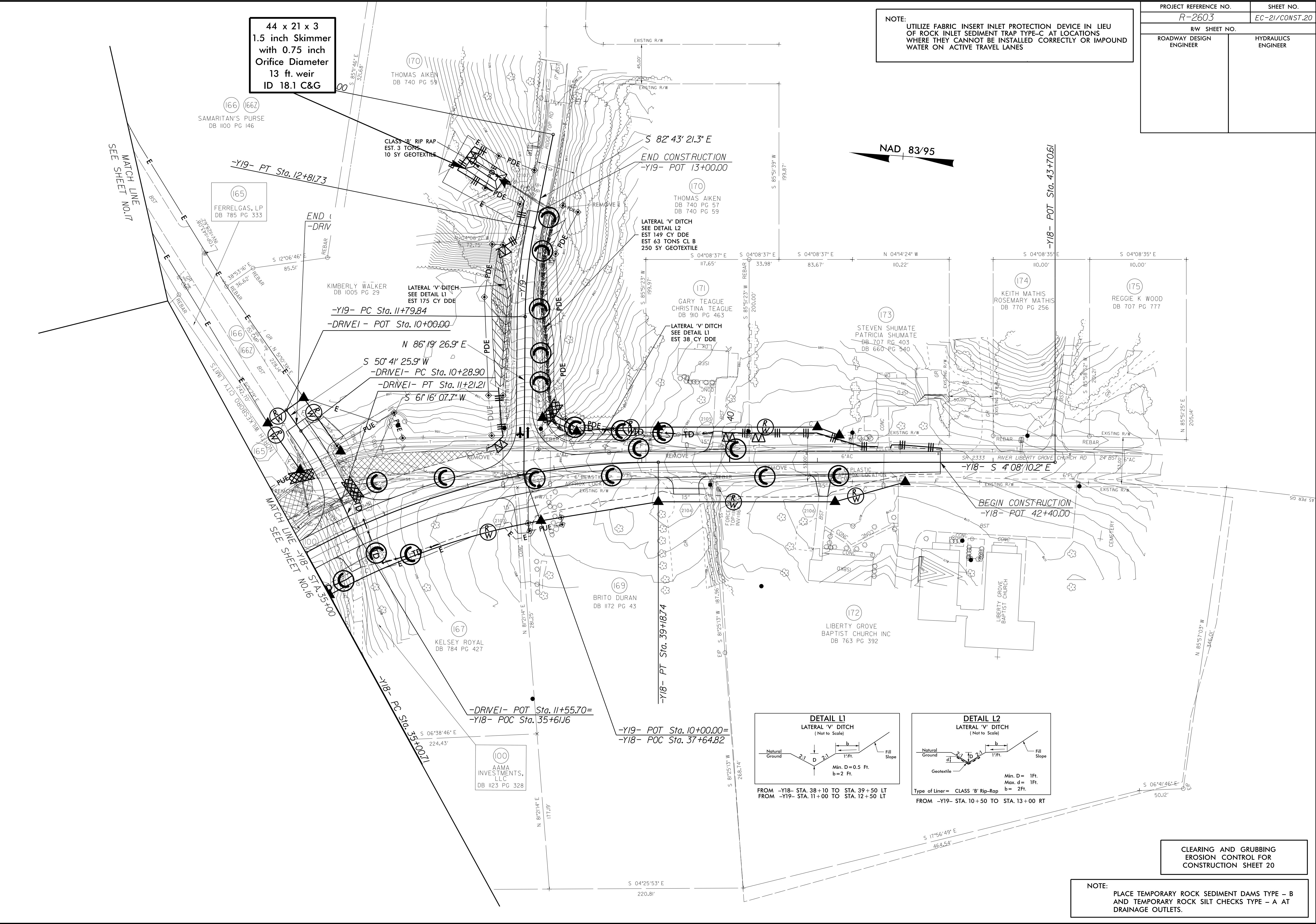


PROJECT REFERENCE NO.	SHEET NO.
R-2603	EC-21/CONST.20
RW SHEET NO.	
ROADWAY DESIGN ENGINEER	HYDRAULICS ENGINEER

NOTE:
UTILIZE FABRIC INSERT INLET PROTECTION DEVICE IN LIEU OF ROCK INLET SEDIMENT TRAP TYPE-C AT LOCATIONS WHERE THEY CANNOT BE INSTALLED CORRECTLY OR IMPOUND WATER ON ACTIVE TRAVEL LANES



8/17/99
94 JUN-2015 15:05
R:\New\Projects\2603\EC-21\CONST.20.dgn
A:\Projects\2603\EC-21\CONST.20.dgn
A:\Projects\2603\EC-21\CONST.20.dgn