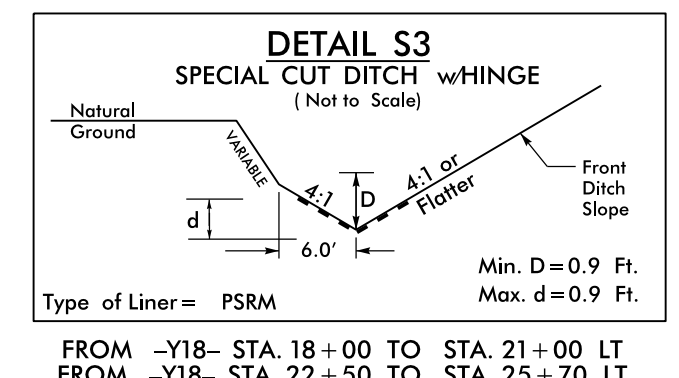
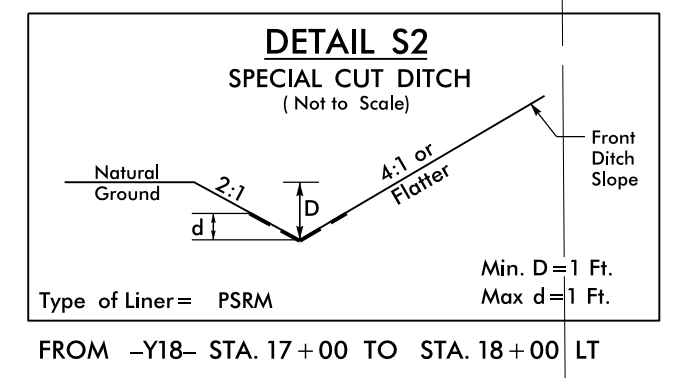
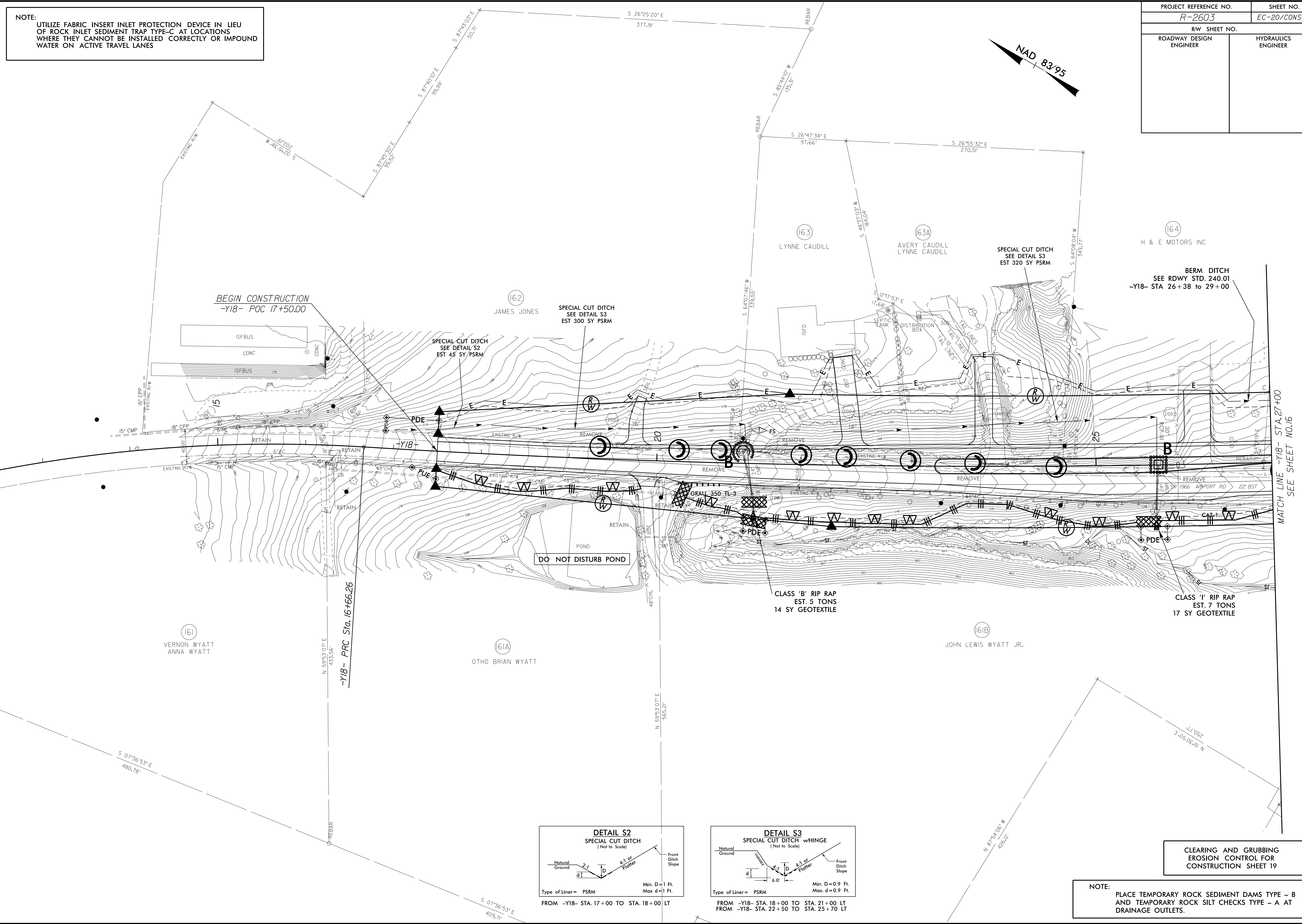
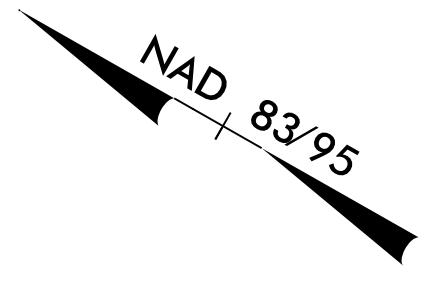


PROJECT REFERENCE NO. <i>R-2603</i>	SHEET NO. <i>EC-20/CONST.19</i>
RW SHEET NO.	
ROADWAY DESIGN ENGINEER	HYDRAULICS ENGINEER

NOTE:
UTILIZE FABRIC INSERT INLET PROTECTION DEVICE IN LIEU OF ROCK INLET SEDIMENT TRAP TYPE-C AT LOCATIONS WHERE THEY CANNOT BE INSTALLED CORRECTLY OR IMPOUND WATER ON ACTIVE TRAVEL LANES



NOTE:
PLACE TEMPORARY ROCK SEDIMENT DAMS TYPE - B AND TEMPORARY ROCK SILT CHECKS TYPE - A AT DRAINAGE OUTLETS.

94 JUN-2016 15:02
 R:\env\p\m\19\19\2603-EC.psh19.dgn
 R:\env\p\m\19\19\2603-EC.psh19.dgn
 8/17/99

MATCH LINE -Y18- STA. 27+00
SEE SHEET NO. 16