

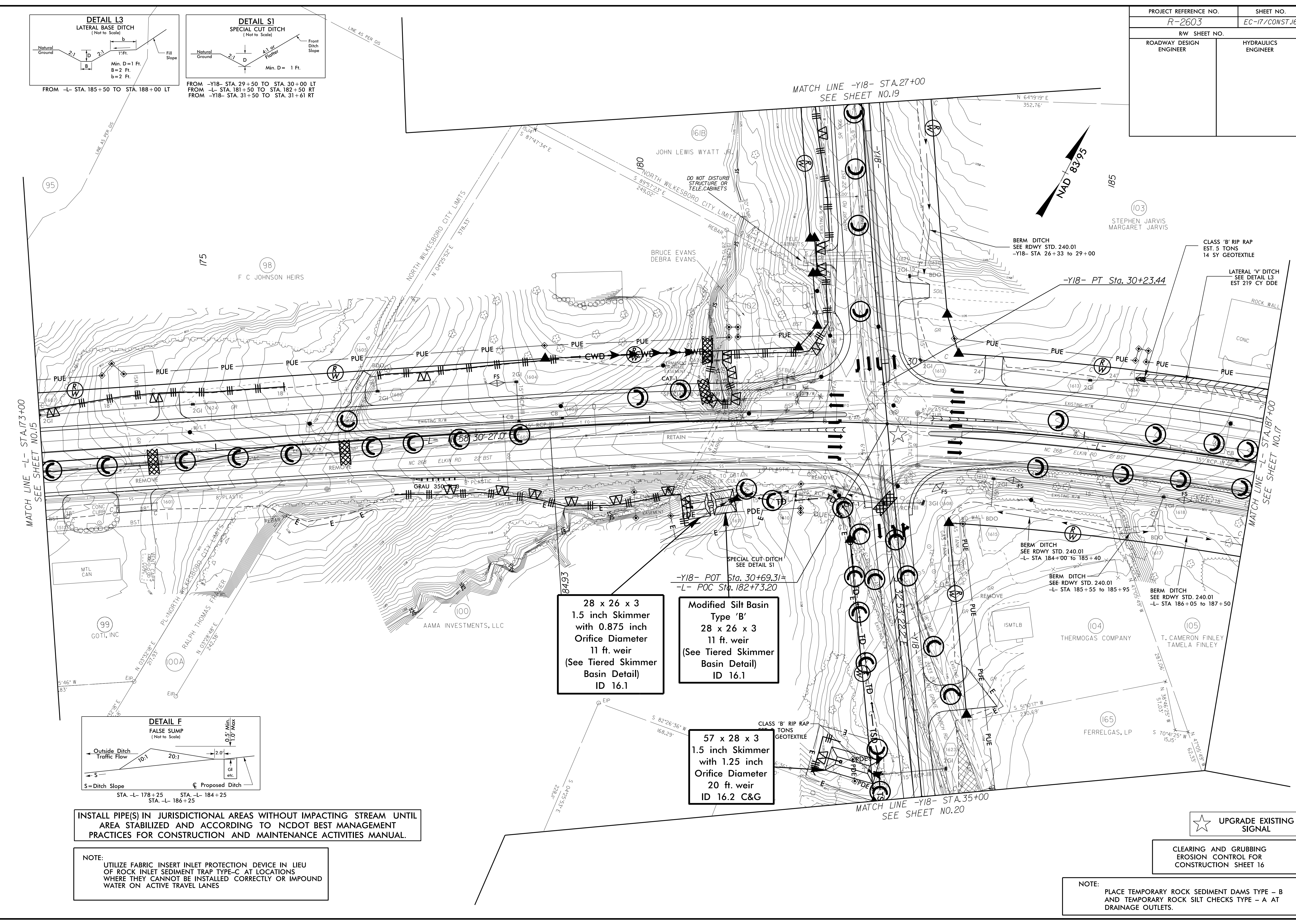
INSTALL PIPE(S) IN JURISDICTIONAL AREAS WITHOUT IMPACTING STREAM UNTIL AREA STABILIZED AND ACCORDING TO NCDOT BEST MANAGEMENT PRACTICES FOR CONSTRUCTION AND MAINTENANCE ACTIVITIES MANUAL.

NOTE: UTILIZE FABRIC INSERT INLET PROTECTION DEVICE IN LIEU OF ROCK INLET SEDIMENT TRAP TYPE - C AT LOCATIONS WHERE THEY CANNOT BE INSTALLED CORRECTLY OR IMPOUND WATER ON ACTIVE TRAVEL LANES

28 x 26 x 3
1.5 inch Skimmer
with 0.875 inch
Orifice Diameter
11 ft. weir
(See Tiered Skimmer
Basin Detail)
ID 16.1

Modified Silt Basin
Type 'B'
28 x 26 x 3
11 ft. weir
(See Tiered Skimmer
Basin Detail)
ID 16.1

57 x 28 x 3
1.5 inch Skimmer
with 1.25 inch
Orifice Diameter
20 ft. weir
ID 16.2 C&G



★ UPGRADE EXISTING SIGNAL

CLEARING AND GRUBBING EROSION CONTROL FOR CONSTRUCTION SHEET 16

NOTE: PLACE TEMPORARY ROCK SEDIMENT DAMS TYPE - B AND TEMPORARY ROCK SILT CHECKS TYPE - A AT DRAINAGE OUTLETS.