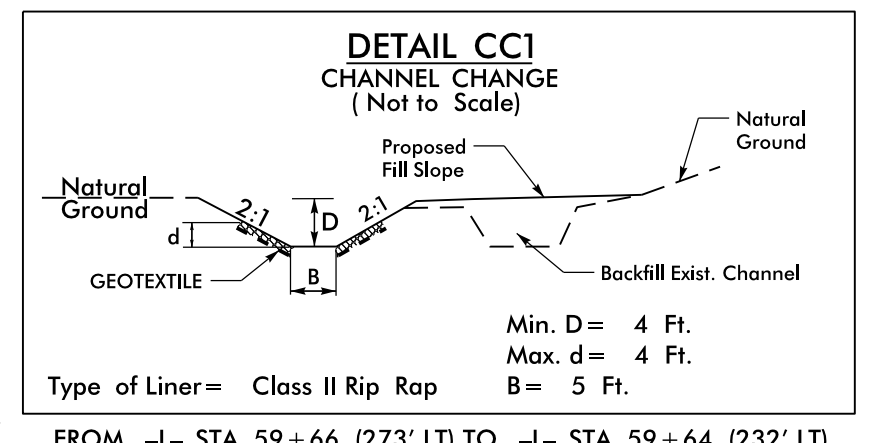
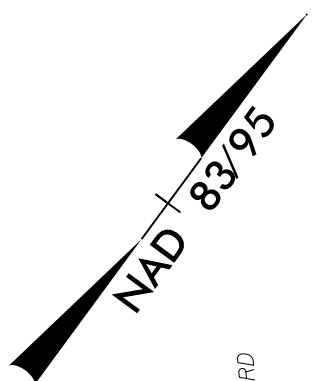


| | |
|-------------------------|---------------------|
| PROJECT REFERENCE NO. | SHEET NO. |
| R-2603 | EC-7/CONST.7 |
| RW SHEET NO. | |
| ROADWAY DESIGN ENGINEER | HYDRAULICS ENGINEER |

NOTE:
UTILIZE FABRIC INSERT INLET PROTECTION DEVICE IN LIEU OF ROCK INLET SEDIMENT TRAP TYPE-C AT LOCATIONS WHERE THEY CANNOT BE INSTALLED CORRECTLY OR IMPOUND WATER ON ACTIVE TRAVEL LANES



PERMANENT CHANNEL CHANGE W/CLASS II RIP RAP SEE DETAIL CCI EST. 50 TONS 146 SY GEOTEXTILE

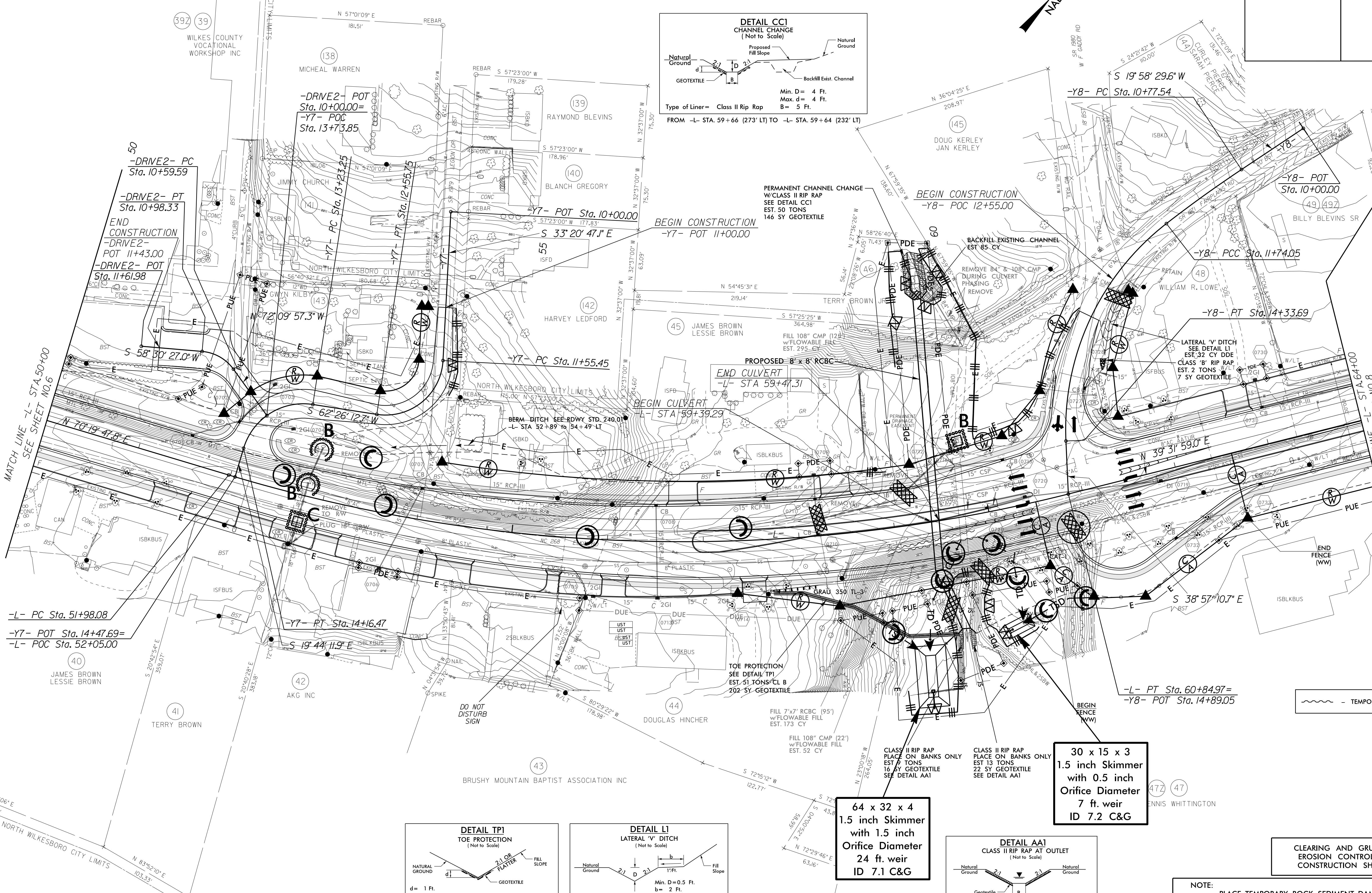
BEGIN CONSTRUCTION -Y8- POC 12+55.00

BEGIN CONSTRUCTION -Y7- POT 11+00.00

END CULVERT -L- STA 59+47.31

BEGIN CULVERT -L- STA 59+39.29

LATERAL 'V' DITCH SEE DETAIL L1 EST. 32 CY DDE CLASS 'B' RIP RAP EST. 2 TONS W/LT 7 SY GEOTEXTILE



MATCH LINE -L- STA. 50+00 SEE SHEET NO. 6

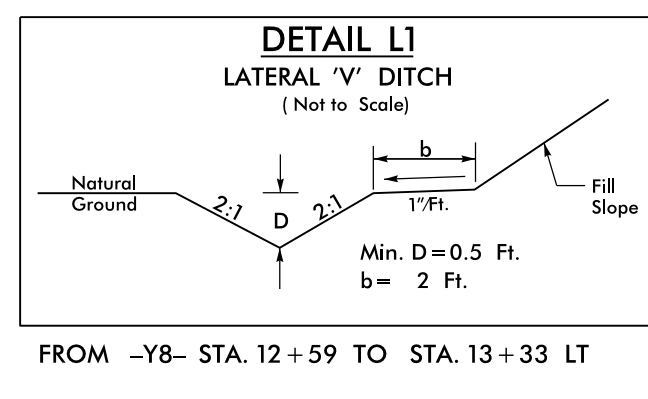
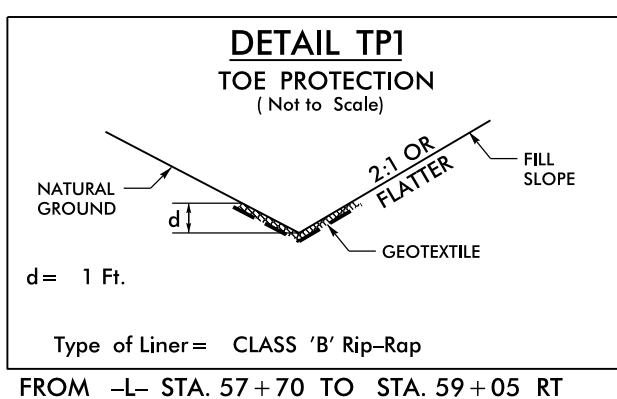
MATCH LINE -L- STA. 64+00 SEE SHEET NO. 8

-L- PC Sta. 51+98.08
-Y7- POT Sta. 14+47.69=
-L- POC Sta. 52+05.00

-Y7- RT Sta. 14+16.47
S 19° 44' 11.9" E

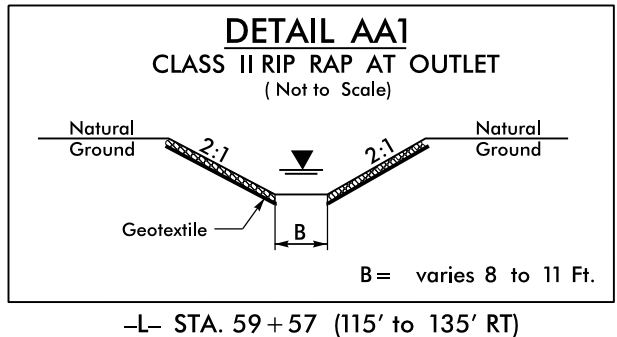
-L- PT Sta. 60+84.97=
-Y8- POT Sta. 14+89.05

TEMPORARY SHORING



64 x 32 x 4
1.5 inch Skimmer
with 1.5 inch
Orifice Diameter
24 ft. weir
ID 7.1 C&G

30 x 15 x 3
1.5 inch Skimmer
with 0.5 inch
Orifice Diameter
7 ft. weir
ID 7.2 C&G



CLEARING AND GRUBBING EROSION CONTROL FOR CONSTRUCTION SHEET 7

NOTE:
PLACE TEMPORARY ROCK SEDIMENT DAMS TYPE - B AND TEMPORARY ROCK SILT CHECKS TYPE - A AT DRAINAGE OUTLETS.

8/17/99
94 JUN-2015 10:40
R:\New\Performance\A1\REN1721413\B2603-EC.psh07.dgn