

MATCHLINE -Y18- STA 33+00
SEE SHEET TMP-39

35+00

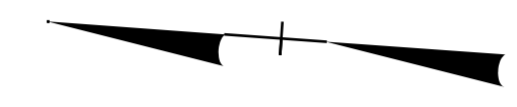
10+00
(-DRIVE1-)

-Y18- STA 37+20±

-Y19-
RIDGE TOP RD

RIVER LIBERTY GROVE CHURCH RD
SR 2333

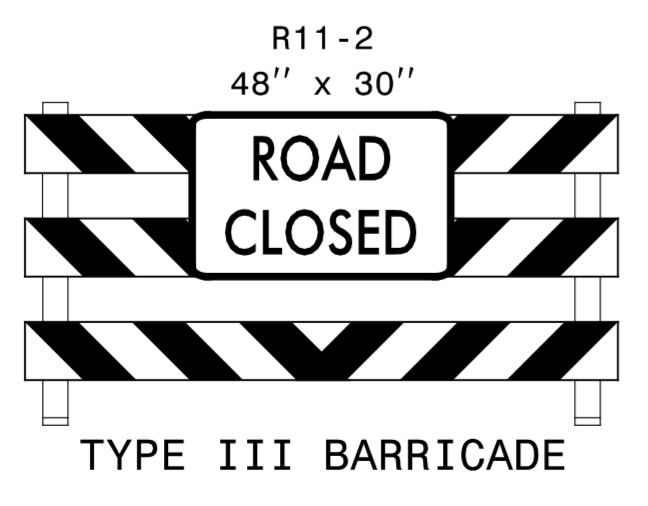
40+00



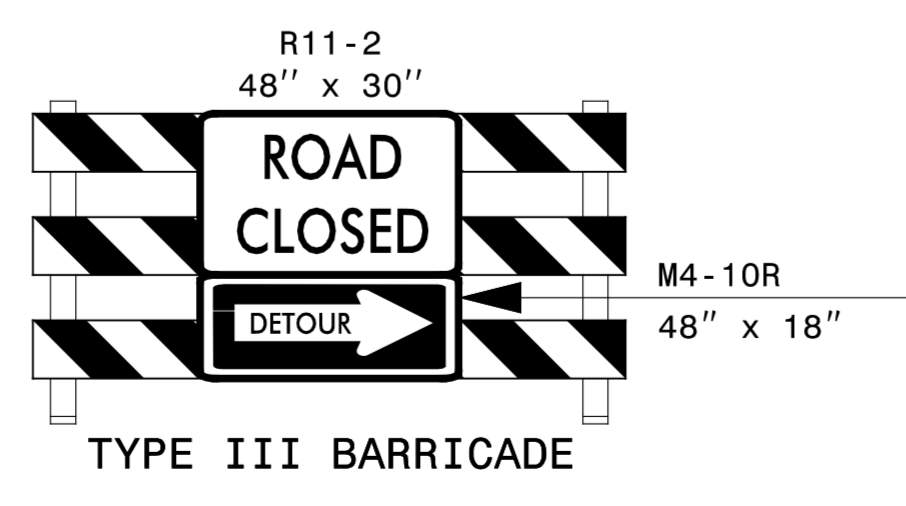
USE RSD 1101.03 (SHEET 2 OF 9)
FOR SIGN PLACEMENT ON AIRPORT RD
⑥, ⑦, ⑧.

MATCHLINE -Y18- STA 33+00
SEE SHEET TMP-38

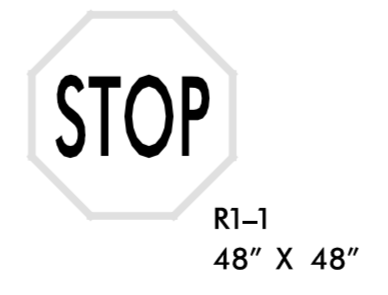
-Y18- STA 42+00±



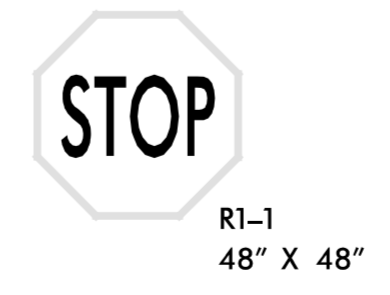
①



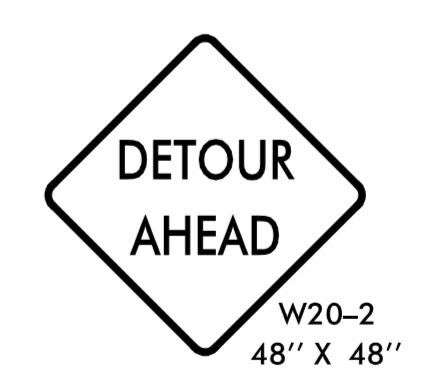
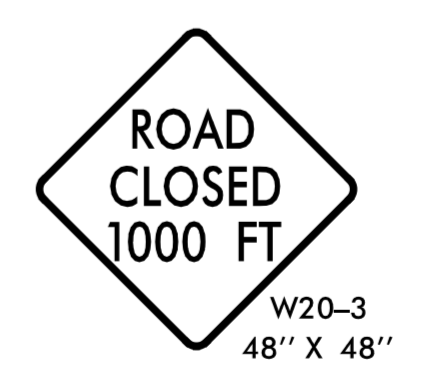
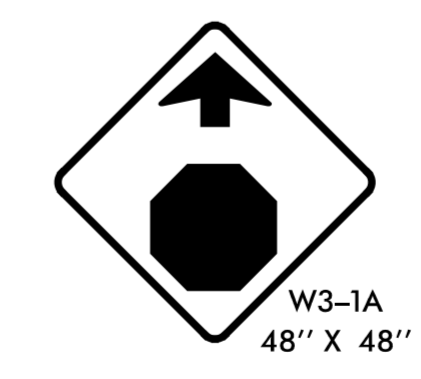
②



③



④



APPROVED *Michael T. Rozpho* DATE: 5/15/2015
SEAL
NORTH CAROLINA PROFESSIONAL ENGINEER
SEAL 15876
MICHAEL T. RZEPHA

DIVISION OF HIGHWAYS
STATE OF NORTH CAROLINA
DEPARTMENT OF TRANSPORTATION
WORK ZONE TRAFFIC CONTROL

PHASE II STEP 1
DETAIL

5/14/2015
R:\TrafficControl\TrafficControl\TCPV-2603_tmp.ppt.sl.dtl_08.dgn
ICA Engineering