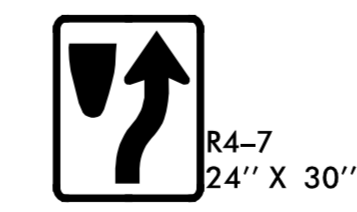
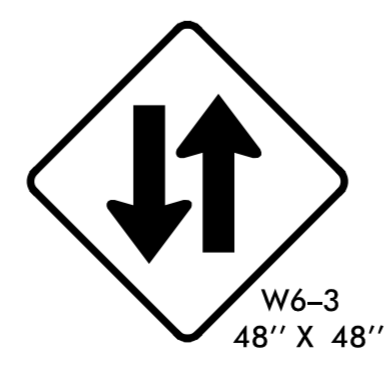
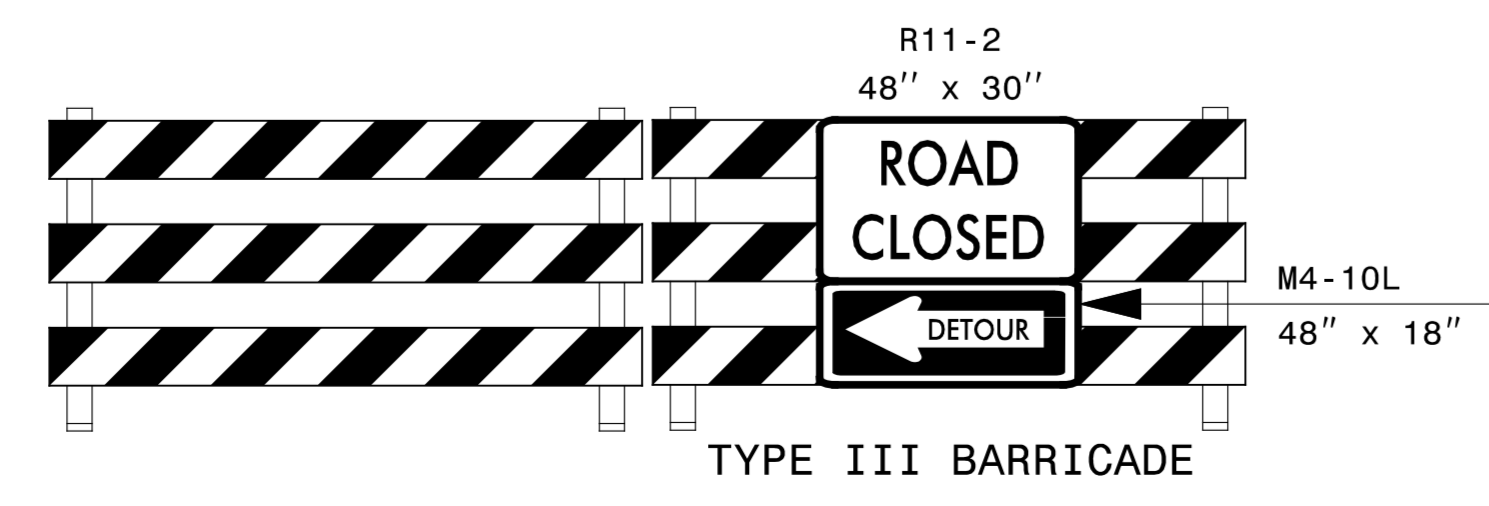
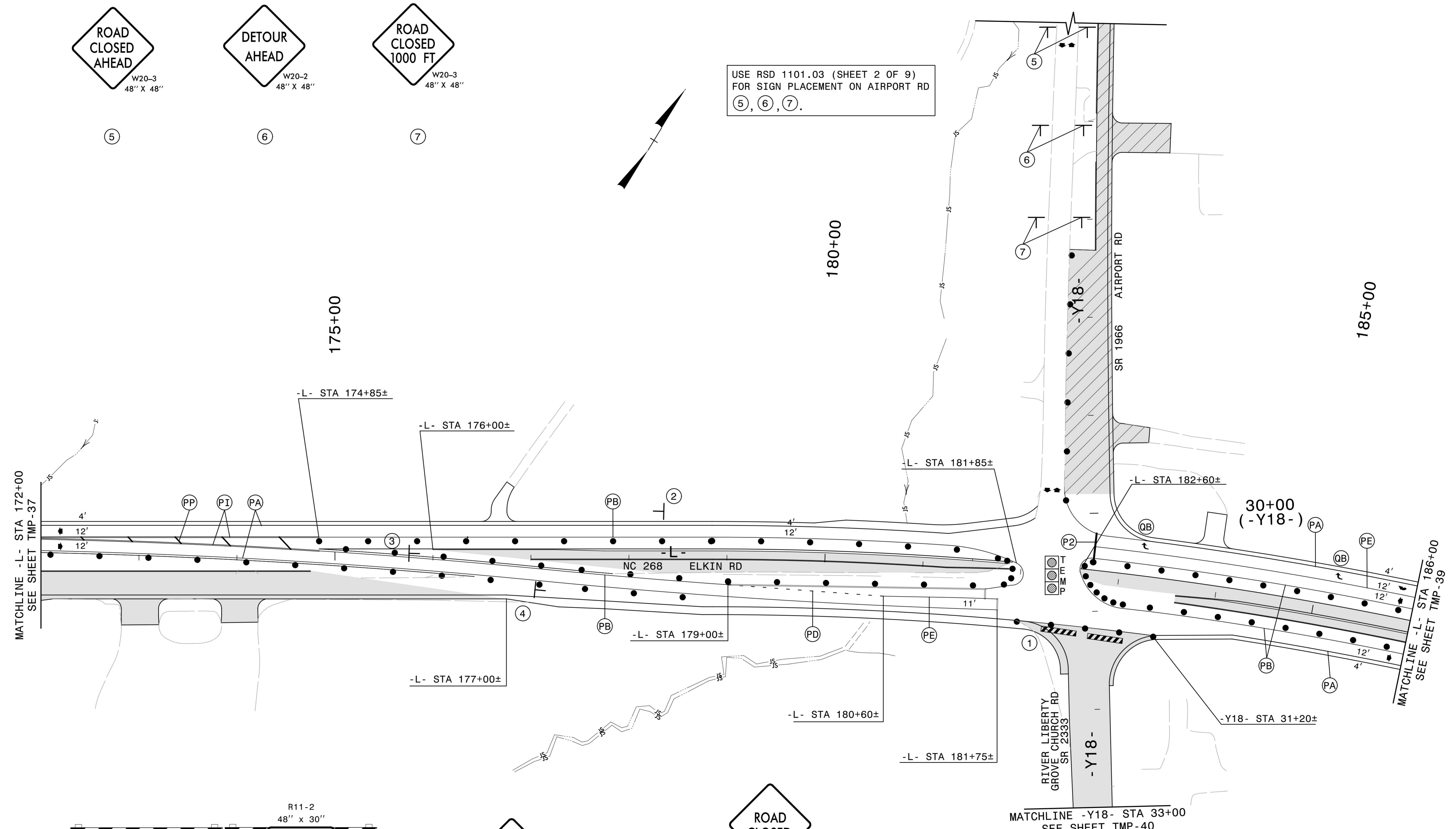


USE RSD 1101.03 (SHEET 2 OF 9)
FOR SIGN PLACEMENT ON AIRPORT RD
⑤, ⑥, ⑦.



APPROVED: *Michael T. Reppha* DATE: 5/15/2015

PHASE II STEP 1
DETAIL

5/14/2015
R:\TrafficControl\CPV-2603_tmp.pil.sl.dtl_06.dgn
ICA Engineering