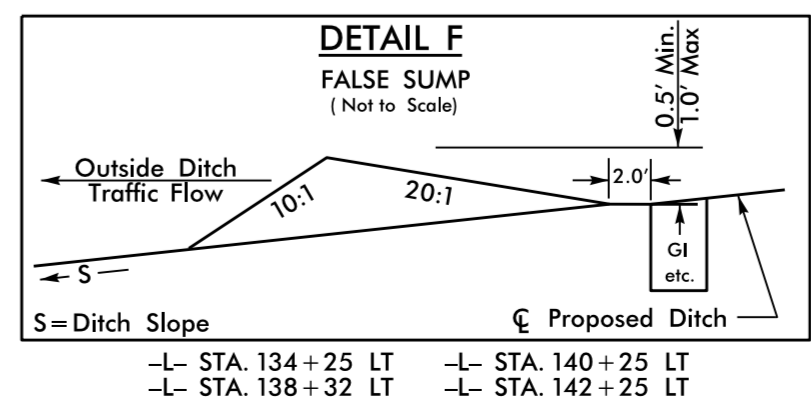
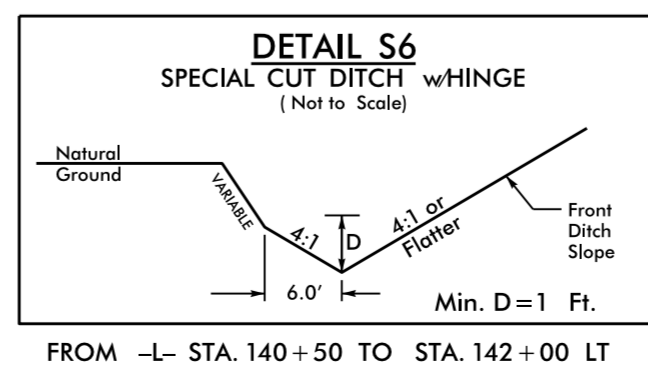
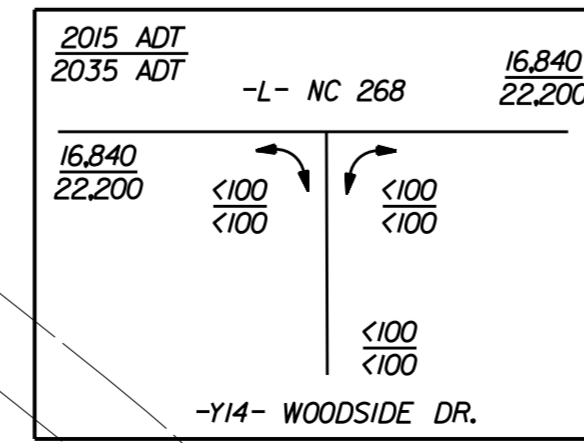
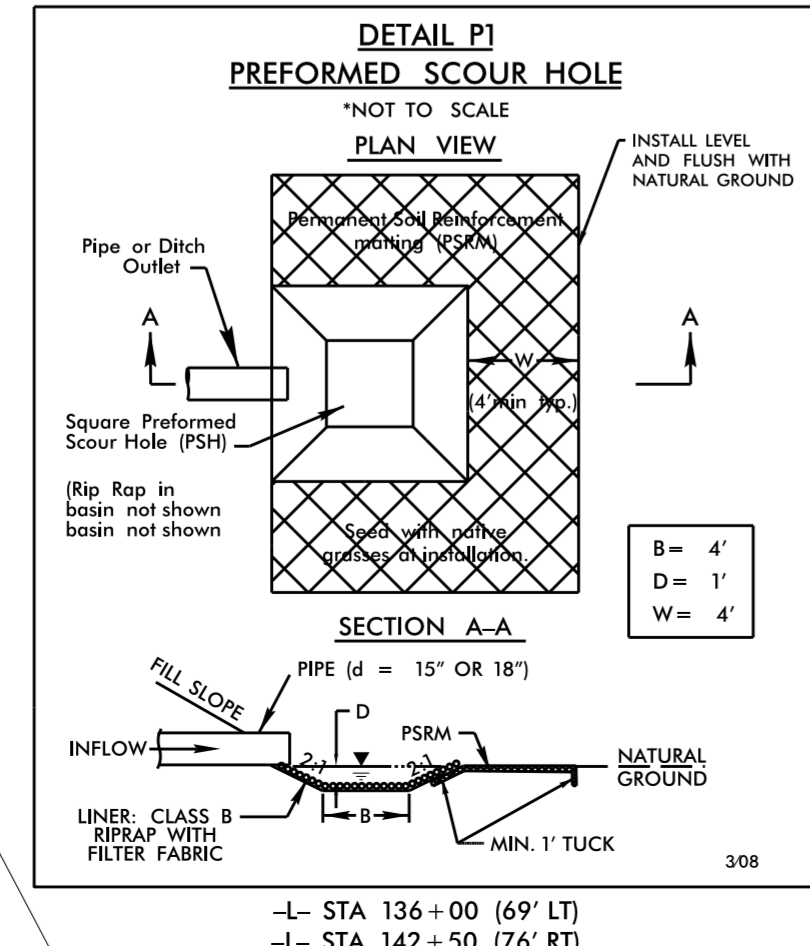
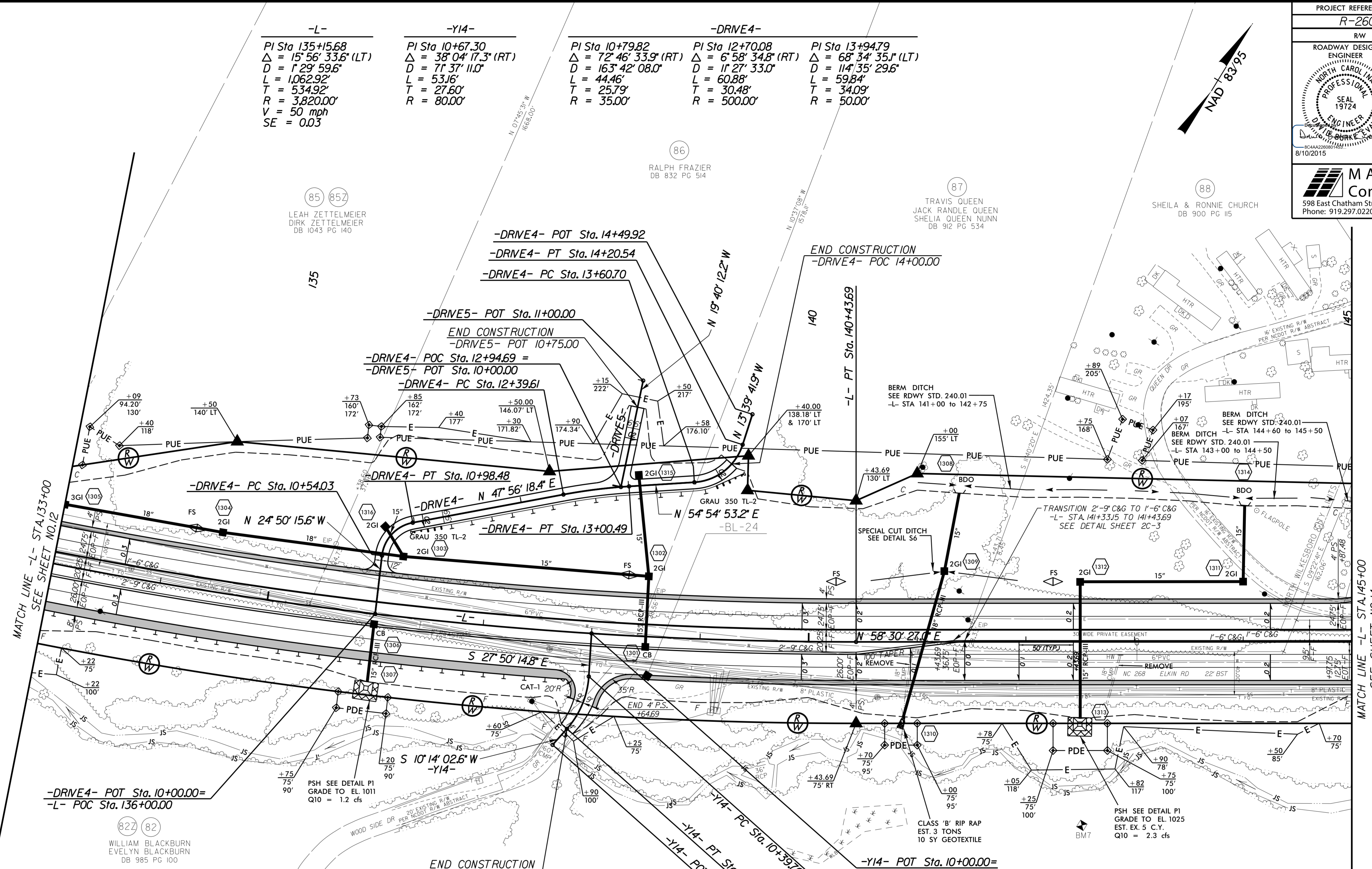


PROJECT REFERENCE NO. R-2603	SHEET NO. 13
RW SHEET NO.	
ROADWAY DESIGN ENGINEER DAVID BURKE PROFESSIONAL SEAL 19724 8/10/2015	HYDRAULICS ENGINEER ROY WEADON PROFESSIONAL SEAL 21656 8/10/2015
M A Engineering Consultants, Inc. 598 East Chatham Street Suite 137 Cary, NC 27511 Phone: 919.297.0220 Fax: 919.297.0221	

-L-	-Y14-	-DRIVE4-	-DRIVE4-	-DRIVE4-
PI Sta 135+15.68 Δ = 15° 56' 33.6" (LT) D = 1' 29' 59.6" L = 1,062.92' T = 534.92' R = 3,820.00' V = 50 mph SE = 0.03	PI Sta 10+67.30 Δ = 38° 04' 17.3" (RT) D = 7' 37' 11.0" L = 53.16' T = 27.60' R = 80.00'	PI Sta 10+79.82 Δ = 72° 46' 33.9" (RT) D = 163' 42' 08.0" L = 44.46' T = 25.79' R = 35.00'	PI Sta 12+70.08 Δ = 6° 58' 34.8" (RT) D = 1' 27' 33.0" L = 60.88' T = 30.48' R = 500.00'	PI Sta 13+94.79 Δ = 68° 34' 35.1" (LT) D = 114' 35' 29.6" L = 59.84' T = 34.09' R = 50.00'



DRIVEWAY RADII ARE 10' UNLESS NOTED OTHERWISE

SEE SHEET 25 FOR -L- PROFILE
 SEE SHEET 32 FOR -Y14- PROFILE
 SEE SHEET 35 FOR -DRIVE4- PROFILE
 SEE SHEET 36 FOR -DRIVE5- PROFILE

REVISIONS

7/31/2015
 16:45:31
 pr-oj\N2603_Rdy-ps-h13.dgn

8/17/99