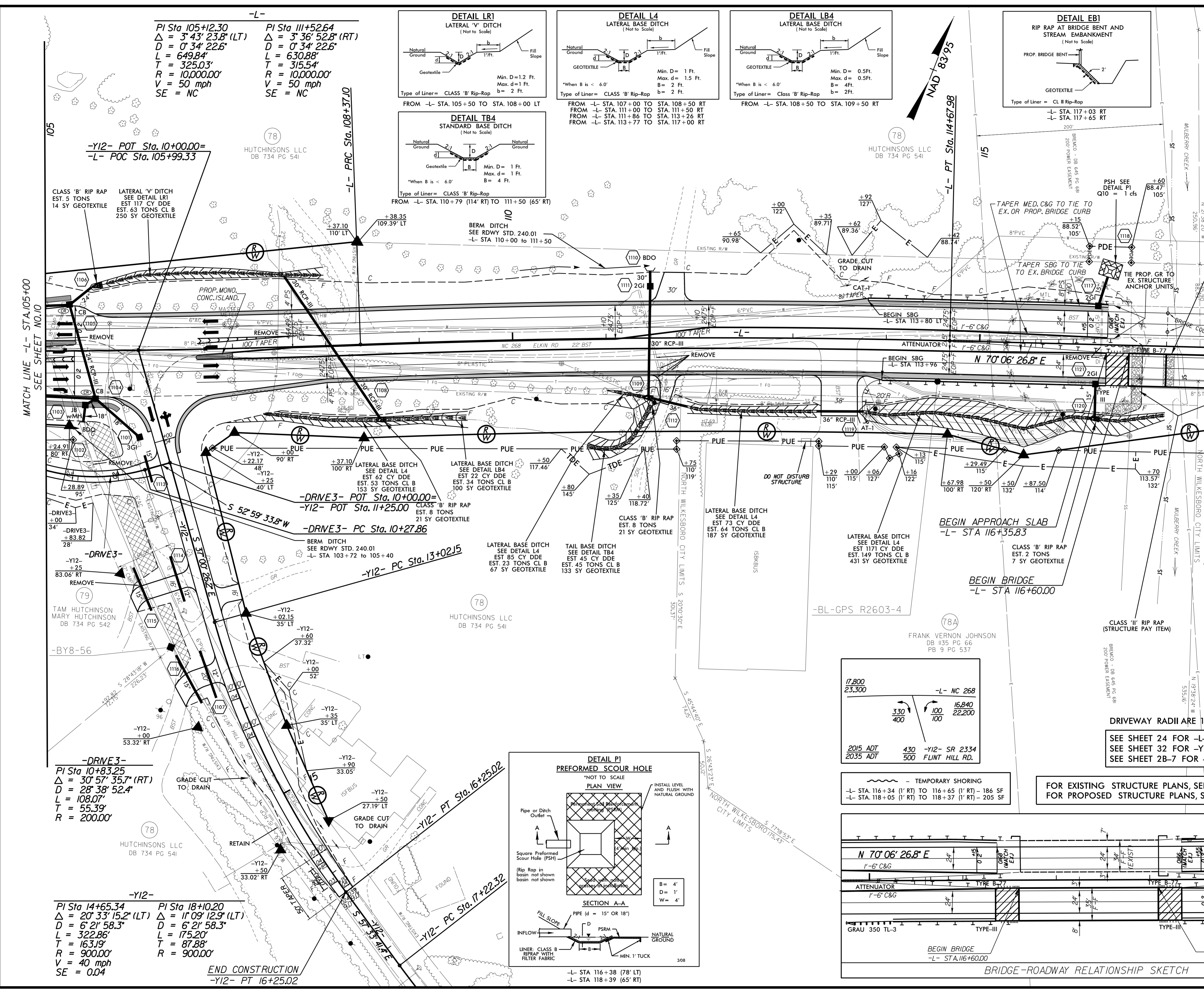
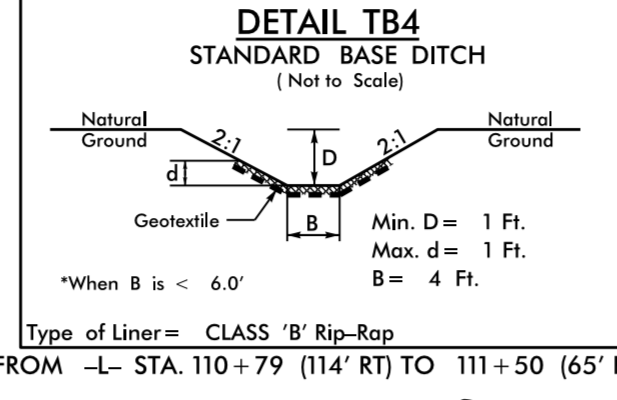
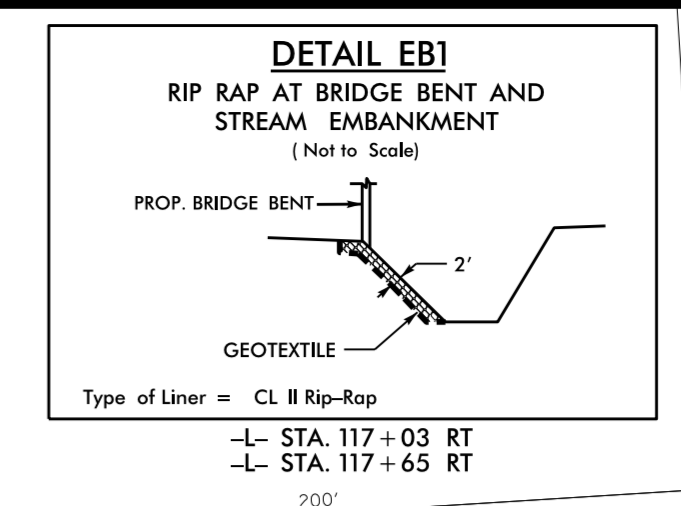
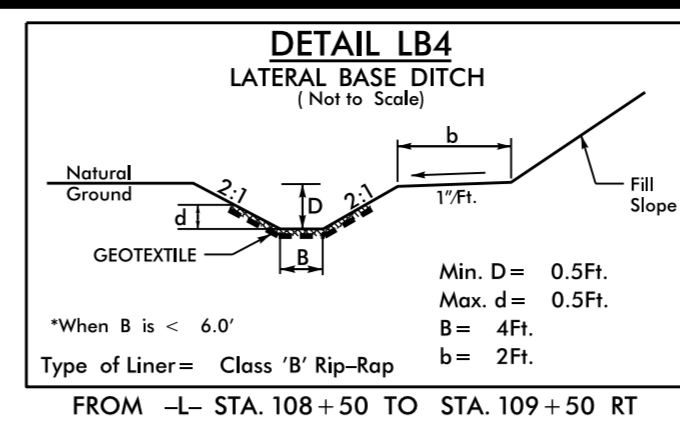
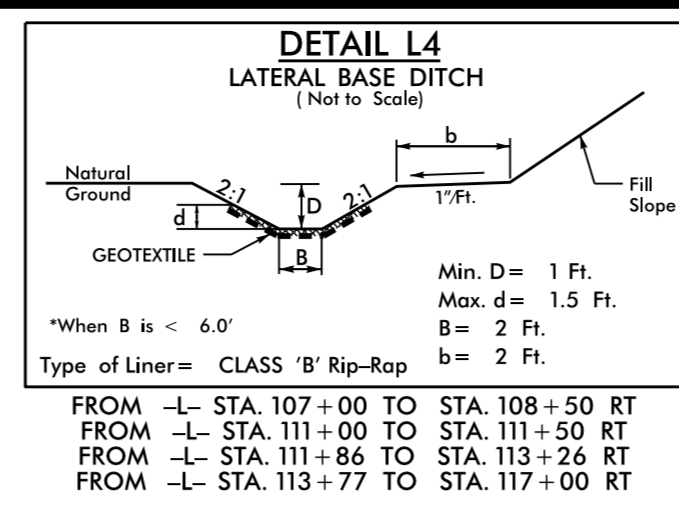
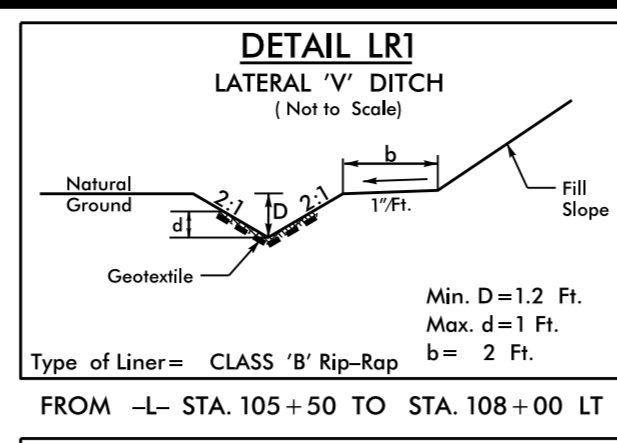


PROJECT REFERENCE NO. R-2603	SHEET NO. 11
RW SHEET NOS. 11 & 19	
ROADWAY DESIGN ENGINEER PROFESSIONAL SEAL 19724	HYDRAULICS ENGINEER PROFESSIONAL SEAL 21656
M A Engineering Consultants, Inc. 598 East Chatham Street Suite 137 Cary, NC 27511 Phone: 919.297.0220 Fax: 919.297.0221	



-L-

PI Sta 105+12.30 Δ = 3° 43' 23.8" (LT) D = 0' 34' 22.6" L = 649.84' T = 325.03' R = 10,000.00' V = 50 mph SE = NC	PI Sta 111+52.64 Δ = 3° 36' 52.8" (RT) D = 0' 34' 22.6" L = 630.88' T = 315.54' R = 10,000.00' V = 50 mph SE = NC
--	--



MATCH LINE -L- STA. 105+00
SEE SHEET NO. 10

MATCH LINE -L- STA. 119+00
SEE SHEET NO. 12

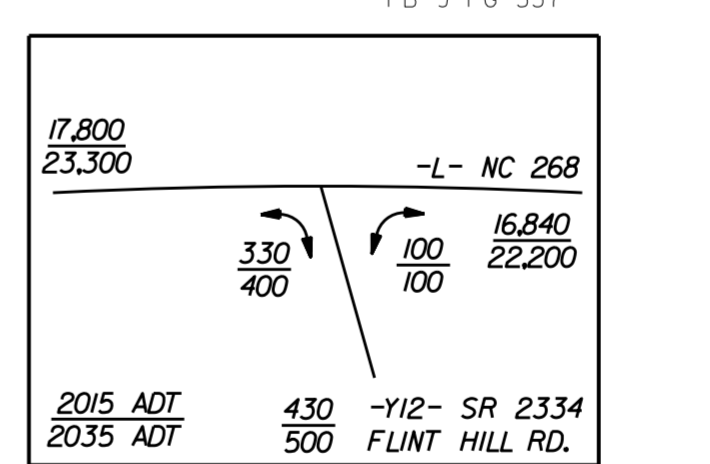
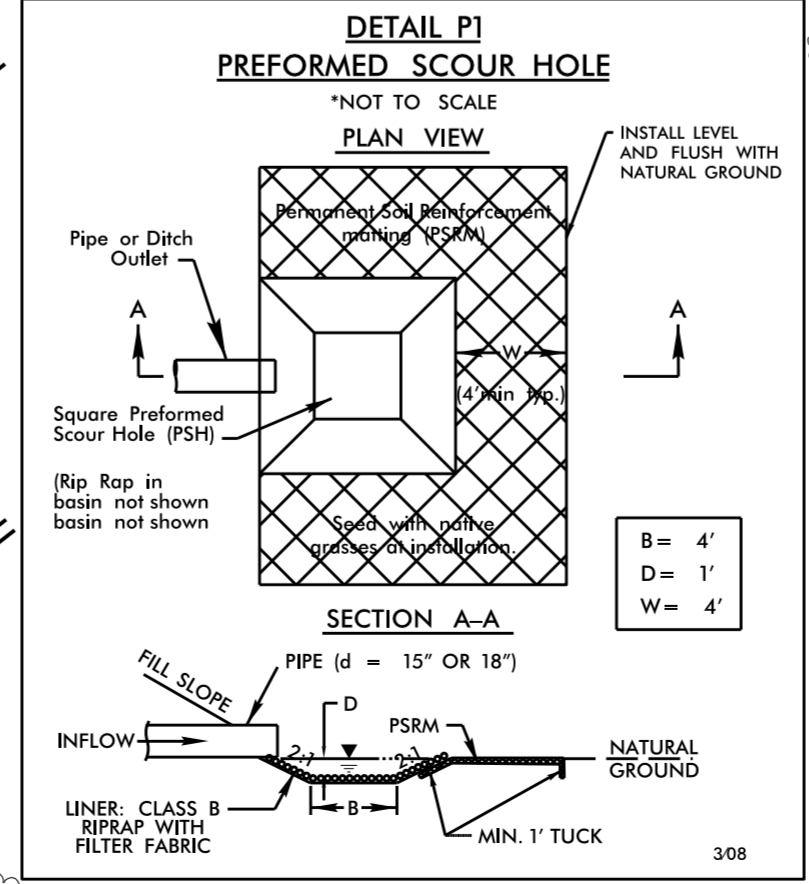
8/10/2015
17:55:37
pr-oj\N2603-Rdy-psh11.dgn

-DRIVE 3-
PI Sta 10+83.25
Δ = 30° 57' 35.7" (RT)
D = 28° 38' 52.4"
L = 108.07'
T = 55.39'
R = 200.00'

-Y12-

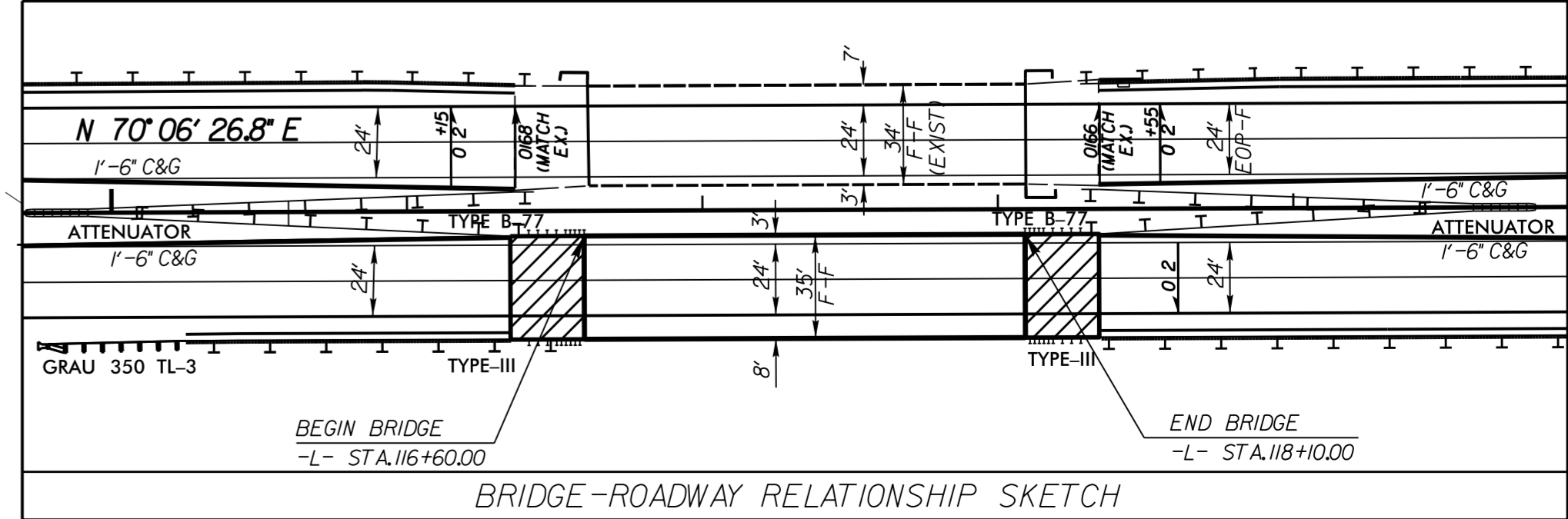
PI Sta 14+65.34 Δ = 20° 33' 15.2" (LT) D = 6' 21' 58.3" L = 322.86' T = 163.19' R = 900.00' V = 40 mph SE = 0.04	PI Sta 18+10.20 Δ = 11° 09' 12.9" (LT) D = 6' 21' 58.3" L = 175.20' T = 87.88' R = 900.00'
---	---

END CONSTRUCTION
-Y12- PT 16+25.02



TEMPORARY SHORING
-L- STA. 116+34 (1' RT) TO 116+65 (1' RT) - 186 SF
-L- STA. 118+05 (1' RT) TO 118+37 (1' RT) - 205 SF

FOR EXISTING STRUCTURE PLANS, SEE SHEETS S-1 THRU S-5
FOR PROPOSED STRUCTURE PLANS, SEE SHEETS S-6 THRU S-47



DRIVEWAY RADII ARE 10' UNLESS NOTED OTHERWISE

SEE SHEET 24 FOR -L- PROFILE
SEE SHEET 32 FOR -Y12- PROFILE
SEE SHEET 2B-7 FOR -Y12- INTERSECTION DETAIL