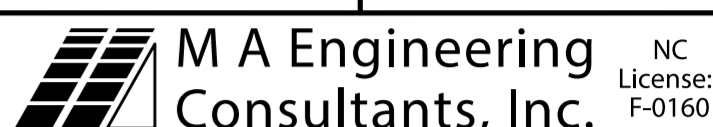
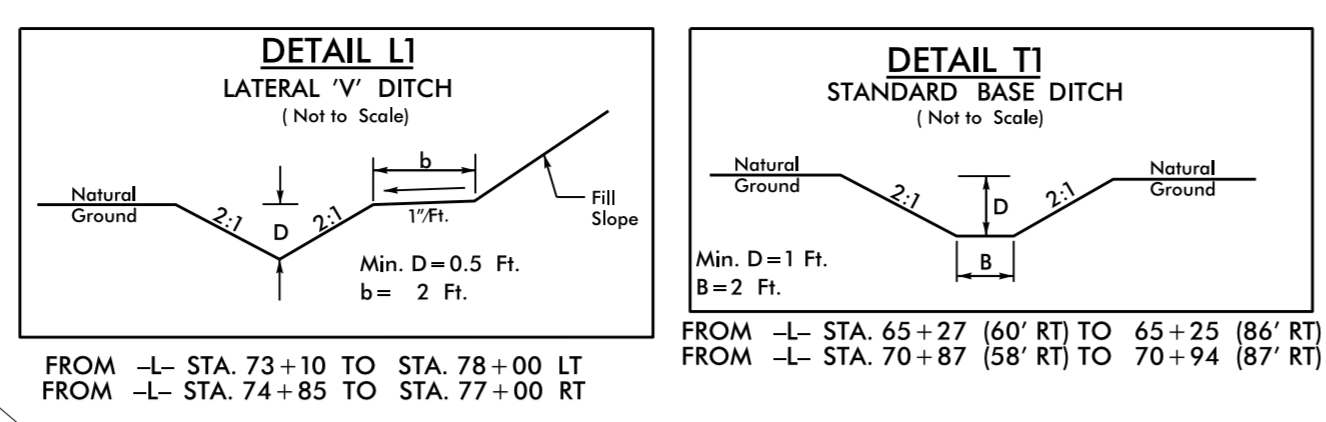
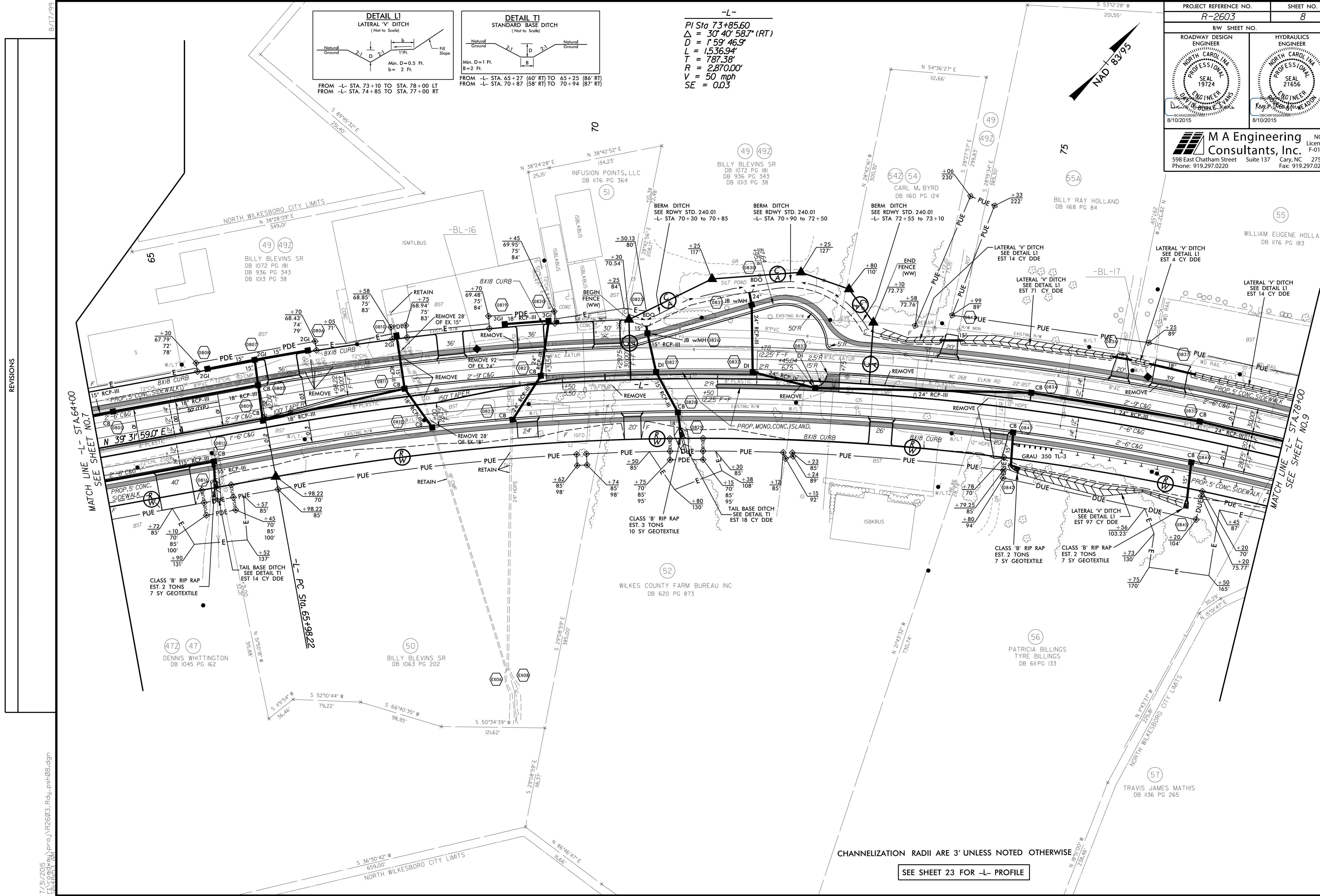


| | | | |
|---|--|---|--|
| PROJECT REFERENCE NO. R-2603 | | SHEET NO. 8 | |
| RW SHEET NO. | | | |
| ROADWAY DESIGN ENGINEER NORTH CAROLINA PROFESSIONAL SEAL 19724 DAVID IS BURKE, E.I.T. 8/10/2015 | | HYDRAULICS ENGINEER NORTH CAROLINA PROFESSIONAL SEAL 21656 ROY W. HERRON, P.E. 8/10/2015 | |
|  M A Engineering Consultants, Inc. 598 East Chatham Street Suite 137 Cary, NC 27511 Phone: 919.297.0220 Fax: 919.297.0221 | | | |



-L-
 PI Sta 73+85.60
 $\Delta = 30^{\circ} 40' 58.7''$ (RT)
 $D = 159' 46.9''$
 $L = 1,536.94'$
 $T = 787.38'$
 $R = 2,870.00'$
 $V = 50$ mph
 $SE = 0.03$



REVISIONS

MATCH LINE -L- STA. 64+00
SEE SHEET NO. 7

MATCH LINE -L- STA. 78+00
SEE SHEET NO. 9

CHANNELIZATION RADII ARE 3' UNLESS NOTED OTHERWISE

SEE SHEET 23 FOR -L- PROFILE

7/31/2015
10:45:33 AM
pr-oj\p2603_rdy-ph\sh08.dgn