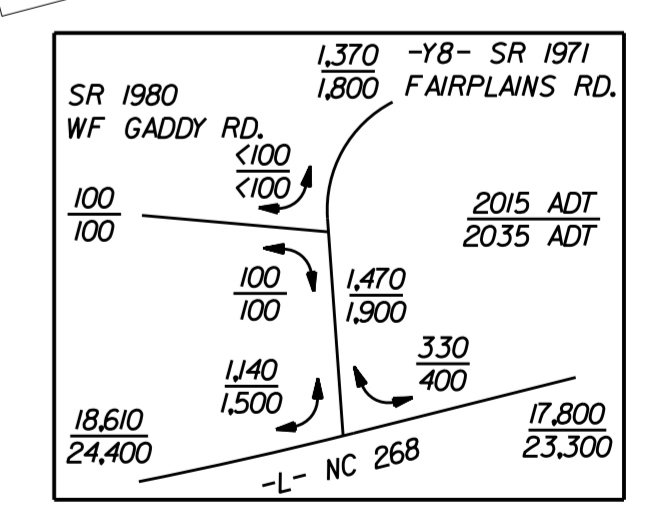
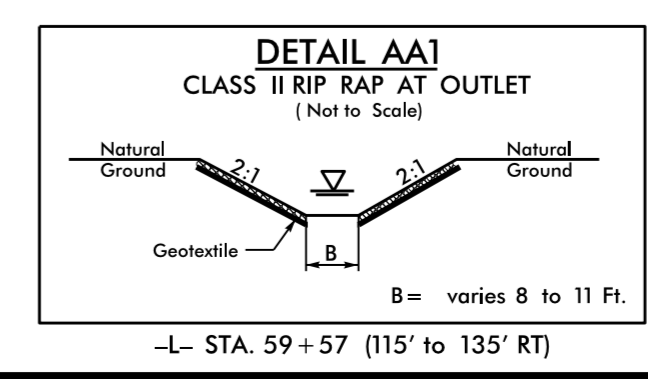
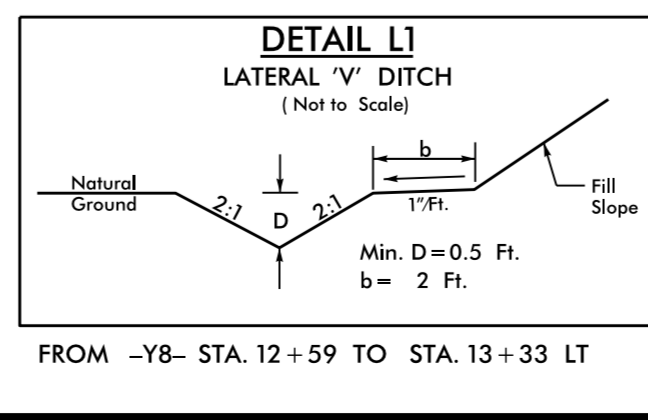
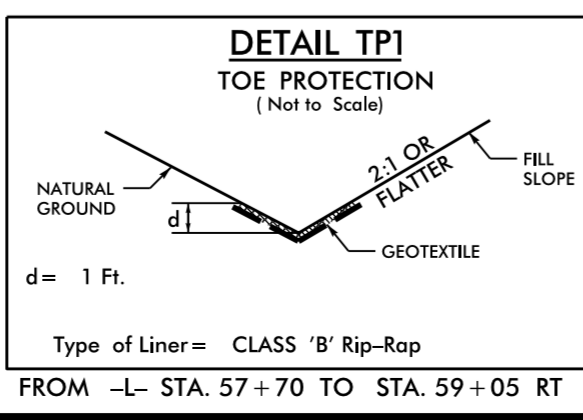
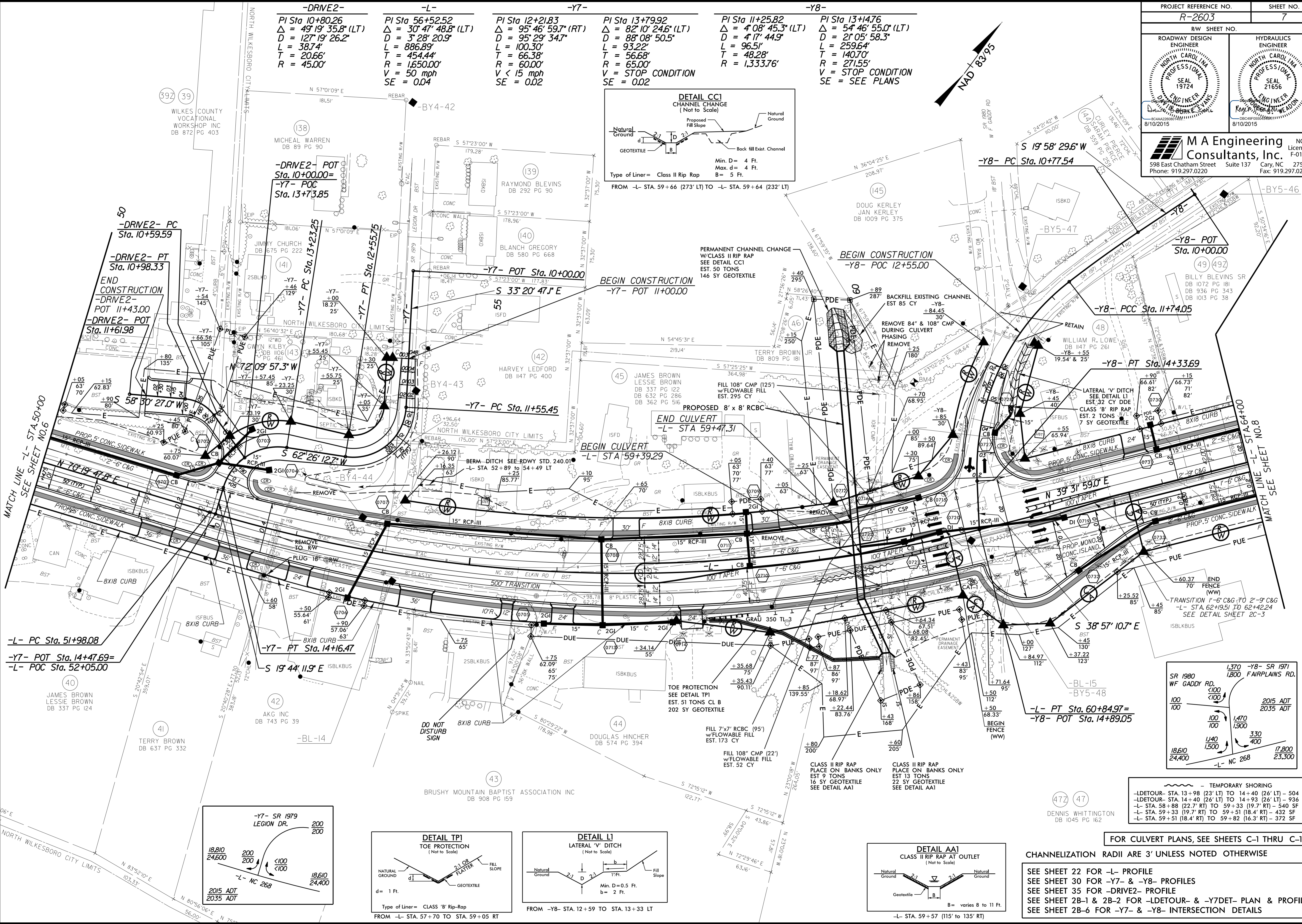
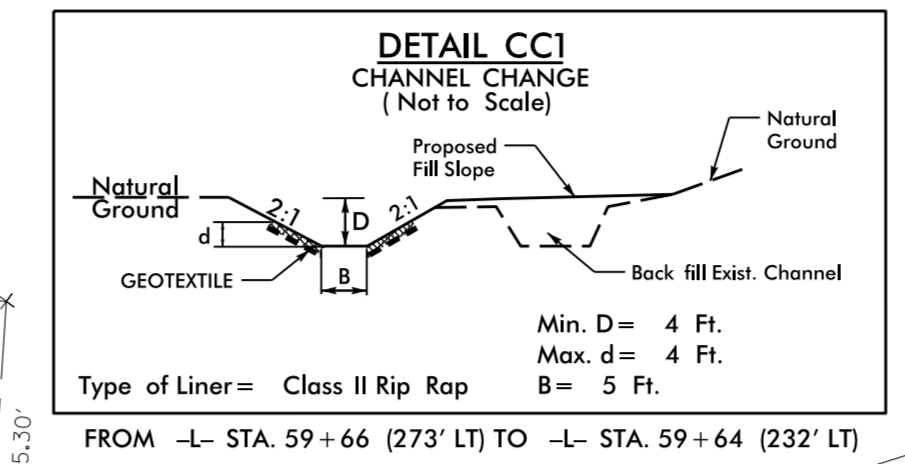


PROJECT REFERENCE NO. <b>R-2603</b>		SHEET NO. <b>7</b>	
ROADWAY DESIGN ENGINEER		HYDRAULICS ENGINEER	
598 East Chatham Street Phone: 919.297.0220		Suite 137 Cary, NC 27511 Fax: 919.297.0221	

-DRIVE2-	-L-	-Y7-	-Y8-
PI Sta 10+80.26 Δ = 49'19" 35.8" (LT) D = 127'19" 26.2" L = 38.74' T = 20.66' R = 45.00'	PI Sta 56+52.52 Δ = 30'47" 48.8" (LT) D = 3'28" 20.9" L = 886.89' R = 1,650.00' V = 50 mph SE = 0.04	PI Sta 12+21.83 Δ = 95'46" 59.7" (RT) D = 95'29" 34.7" L = 100.30' R = 66.38' V < 15 mph SE = 0.02	PI Sta 13+79.92 Δ = 82'10" 24.6" (LT) D = 88'08" 50.5" L = 93.22' R = 56.68' V = STOP CONDITION SE = 0.02
			PI Sta 11+25.82 Δ = 4'08" 45.3" (LT) D = 4'17" 44.9" L = 96.51' R = 1,333.76'
			PI Sta 13+14.76 Δ = 54'46" 55.0" (LT) D = 2'05" 58.3" L = 259.64' R = 271.55' V = STOP CONDITION SE = SEE PLANS



TEMPORARY SHORING

- LDETOUR- STA. 13+98 (23' LT) TO 14+40 (26' LT) - 504 SF
- LDETOUR- STA. 14+40 (26' LT) TO 14+93 (26' LT) - 936 SF
- L- STA. 58+98 (22.7' RT) TO 59+33 (19.7' RT) - 540 SF
- L- STA. 59+33 (19.7' RT) TO 59+51 (18.4' RT) - 432 SF
- L- STA. 59+51 (18.4' RT) TO 59+82 (16.3' RT) - 372 SF

FOR CULVERT PLANS, SEE SHEETS C-1 THRU C-10

CHANNELIZATION RADII ARE 3' UNLESS NOTED OTHERWISE

SEE SHEET 22 FOR -L- PROFILE  
SEE SHEET 30 FOR -Y7- & -Y8- PROFILES  
SEE SHEET 35 FOR -DRIVE2- PROFILE  
SEE SHEET 2B-1 & 2B-2 FOR -LDETOUR- & -Y7DET- PLAN & PROFILE  
SEE SHEET 2B-6 FOR -Y7- & -Y8- INTERSECTION DETAILS

REVISIONS

7/31/2015  
10:58:23 AM  
pr-oj\N2603-Rdy-ps\sh07.dgn