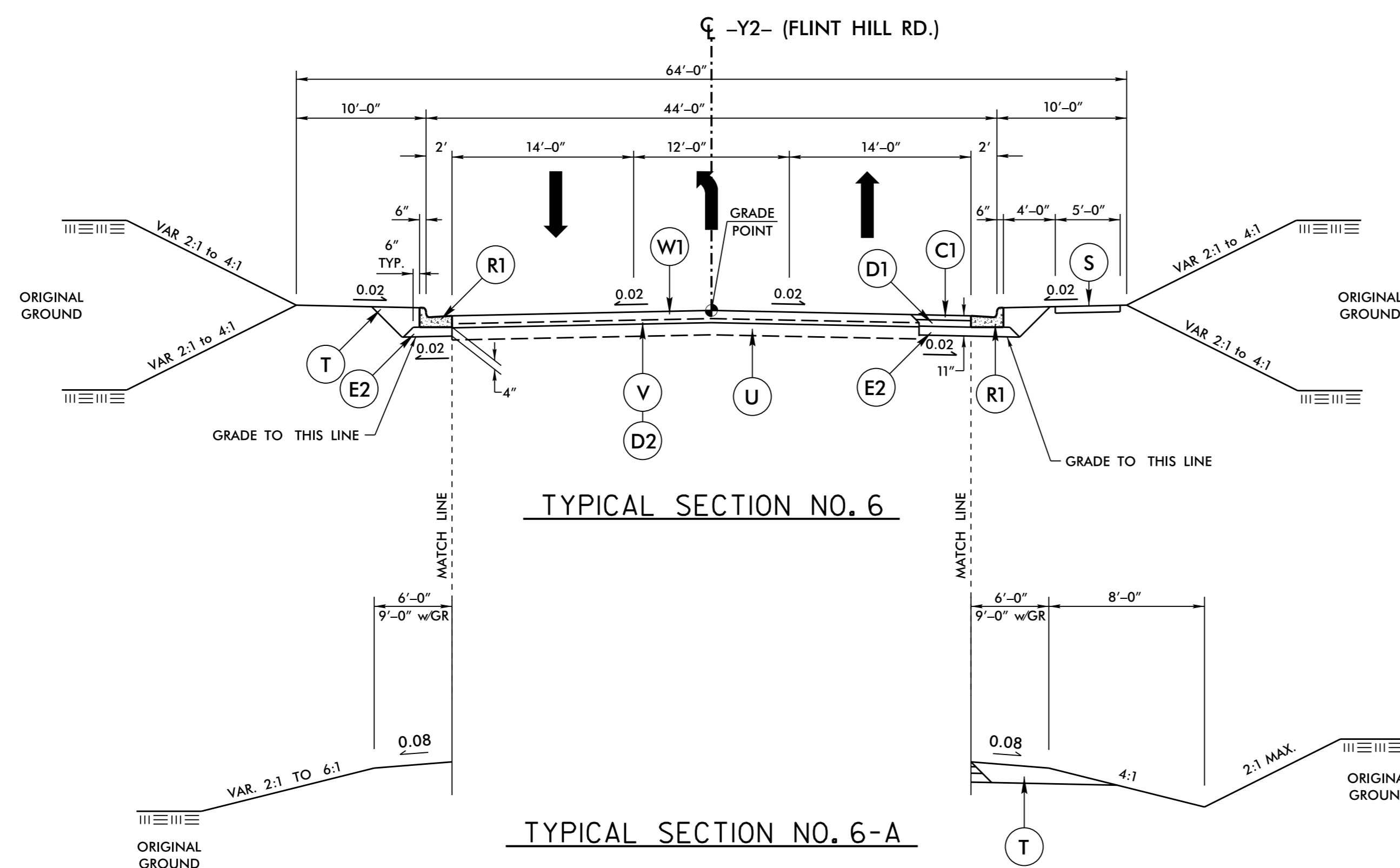


5/14/1999

PROJECT REFERENCE NO. R-2603	SHEET NO. 2A-5
ROADWAY DESIGN ENGINEER NORTH CAROLINA PROFESSIONAL SEAL 19724 8/10/2015	PAVEMENT DESIGN ENGINEER NORTH CAROLINA PROFESSIONAL SEAL 031484 8/3/2015
M A Engineering Consultants, Inc.	
598 East Chatham Street Phone: 919.297.0220 Suite 137 Cary, NC 27511 NC License: F-0160 Fax: 919.297.0221	



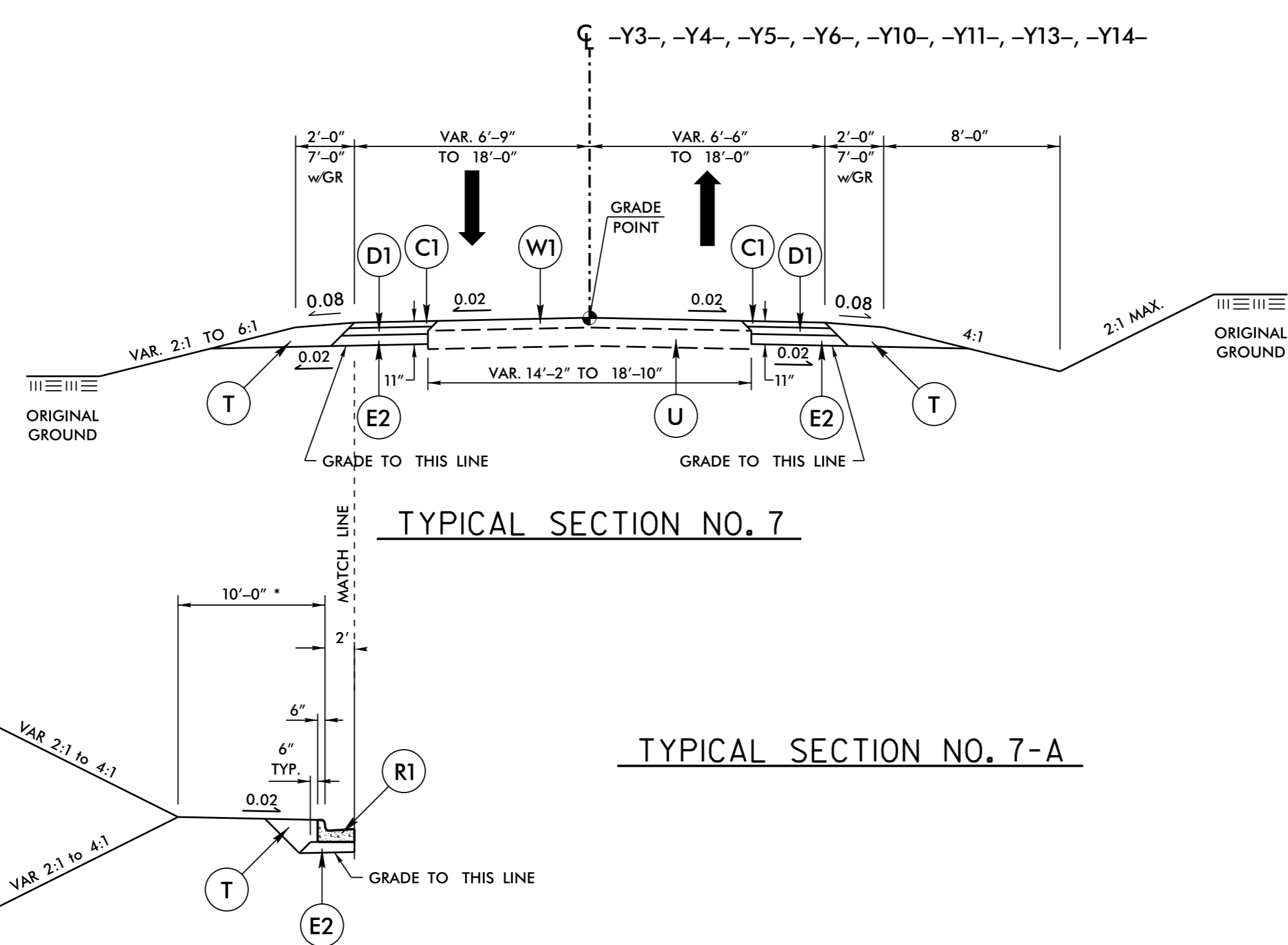
USE TYPICAL SECTION NO. 6:
FROM -Y2- STA. 17+93.62 TO 18+54.72

USE TYPICAL SECTION NO. 6-A IN CONJUNCTION WITH TYPICAL SECTION NO. 6:
FROM -Y2- STA. 18+54.72 TO 19+30.00

NOTE: DO NOT MILL EXISTING PAVEMENT AND REPLACE WITH 2.5" I19.0C IN THIS LOCATION.

PAVEMENT SCHEDULE (FINAL PAVEMENT DESIGN)	
C1	3" S9.5C
C2	VAR. S9.5C
C3	3" S9.5B
C4	VAR. S9.5B
D1	4" I19.0C
D2	2.5" I19.0C
D3	VAR. I19.0C
D4	4" I19.0B
D5	VAR. I19.0B
E1	5" B25.0C
E2	4" B25.0C
E3	3" B25.0C
E4	VAR. B25.0C
E5	4" B25.0B
E6	VAR. B25.0B
J1	8" ABC
K	LIME OR CEMENT SUBGRADE STABILIZ.
L	STABILIZER AGGREGATE
N	GEOTEXTILE FOR PAVEMENT STABILIZ.
P	.35 PRIME COAT
R1	2'-6" C & G
R2	1'-6" C & G
R3	2'-9" C & G
R4	5" MONO. CONC. ISLAND (KEYED IN)
S	4" SIDEWALK
T	EARTH MATERIAL
U	EXIST. PAVEMENT
V	MILLING, 2.5"
W1	WEDGING
W2	WEDGING
W3	WEDGING

PAVEMENT EDGE SLOPES 1:1 UNLESS NOTED OTHERWISE



USE TYPICAL SECTION NO. 7:
FROM -Y3- STA. 10+06.00 TO 10+72.48
FROM -Y5- STA. 10+00.00 TO 10+72.46
FROM -Y11- STA. 12+48.35 TO 13+59.19

USE TYPICAL SECTION NO. 7 WITH FULL WIDTH NEW PAVEMENT IN LIEU OF WEDGING & WIDENING:
FROM -Y4- STA. 10+00.00 TO 10+72.50
FROM -Y6- STA. 10+50.00 TO 11+72.20
FROM -Y10- STA. 11+56.49 TO 12+62.49
FROM -Y13- STA. 10+72.51 TO 11+15.22
FROM -Y14- STA. 10+59.64 TO 10+92.86

USE TYPICAL SECTION NO. 7-A IN CONJUNCTION WITH TYPICAL SECTION 7:
FROM -Y5- STA. 10+00.00 TO 10+72.46
FROM -Y6- STA. 10+50.00 TO 11+72.20

• VARIES 2'-0" TO 10'-0" FOR -Y6-

7/2/2015
r:\11080808\proj\2603\rdy\typ.dgn