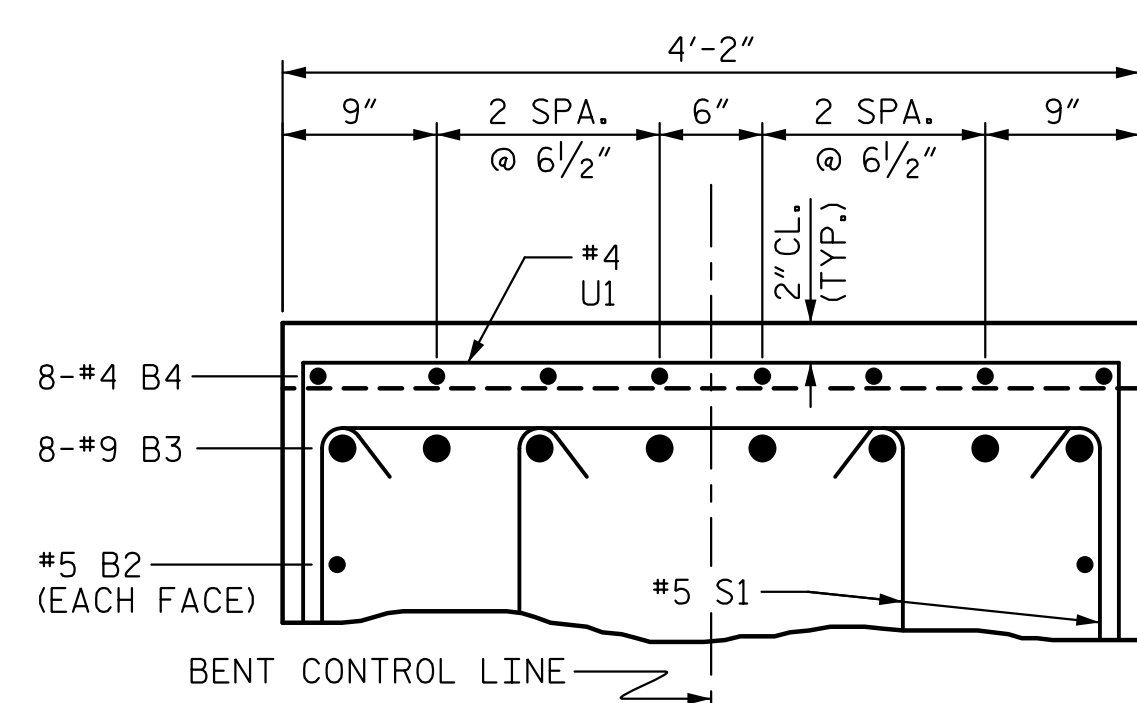
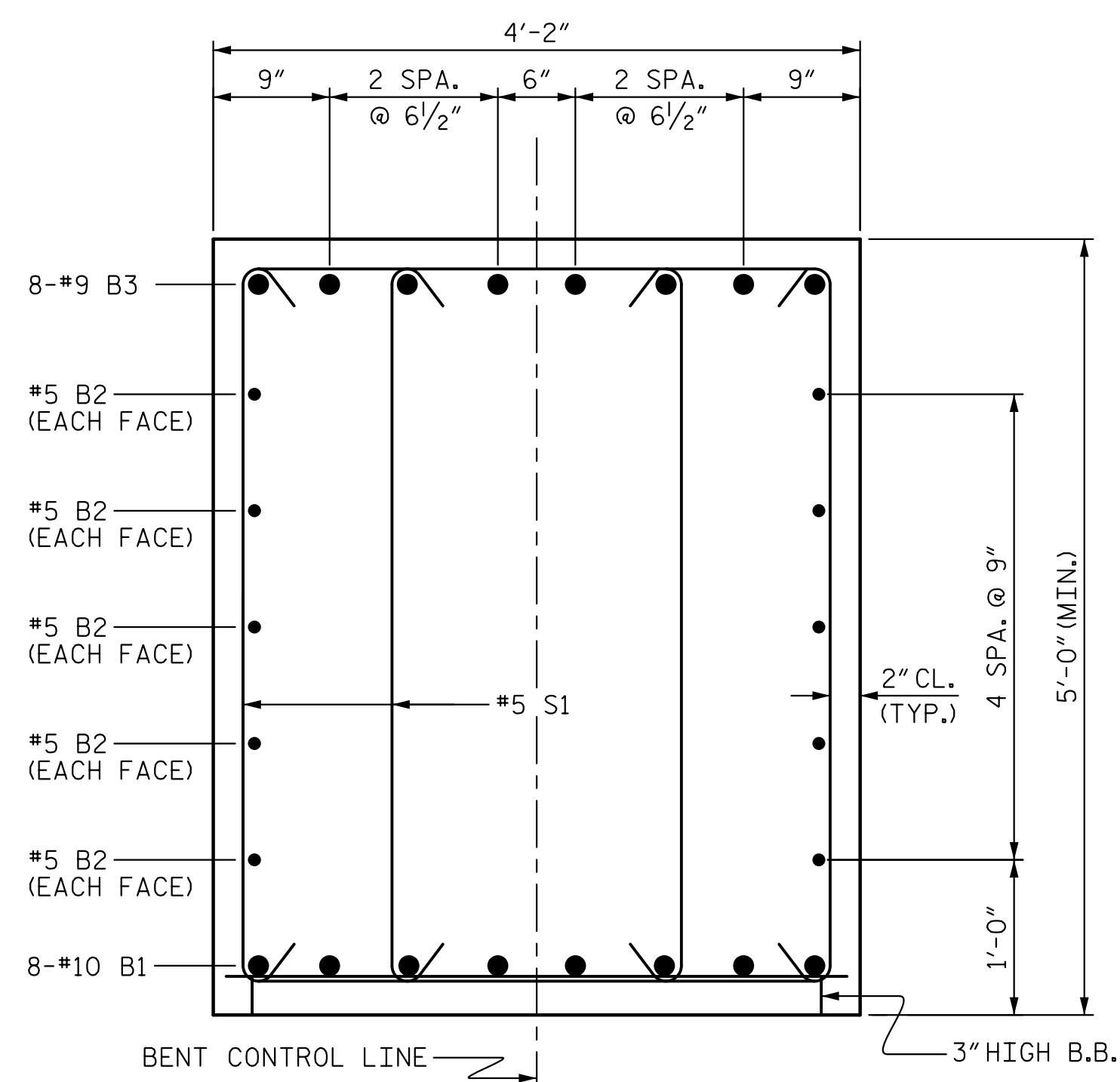


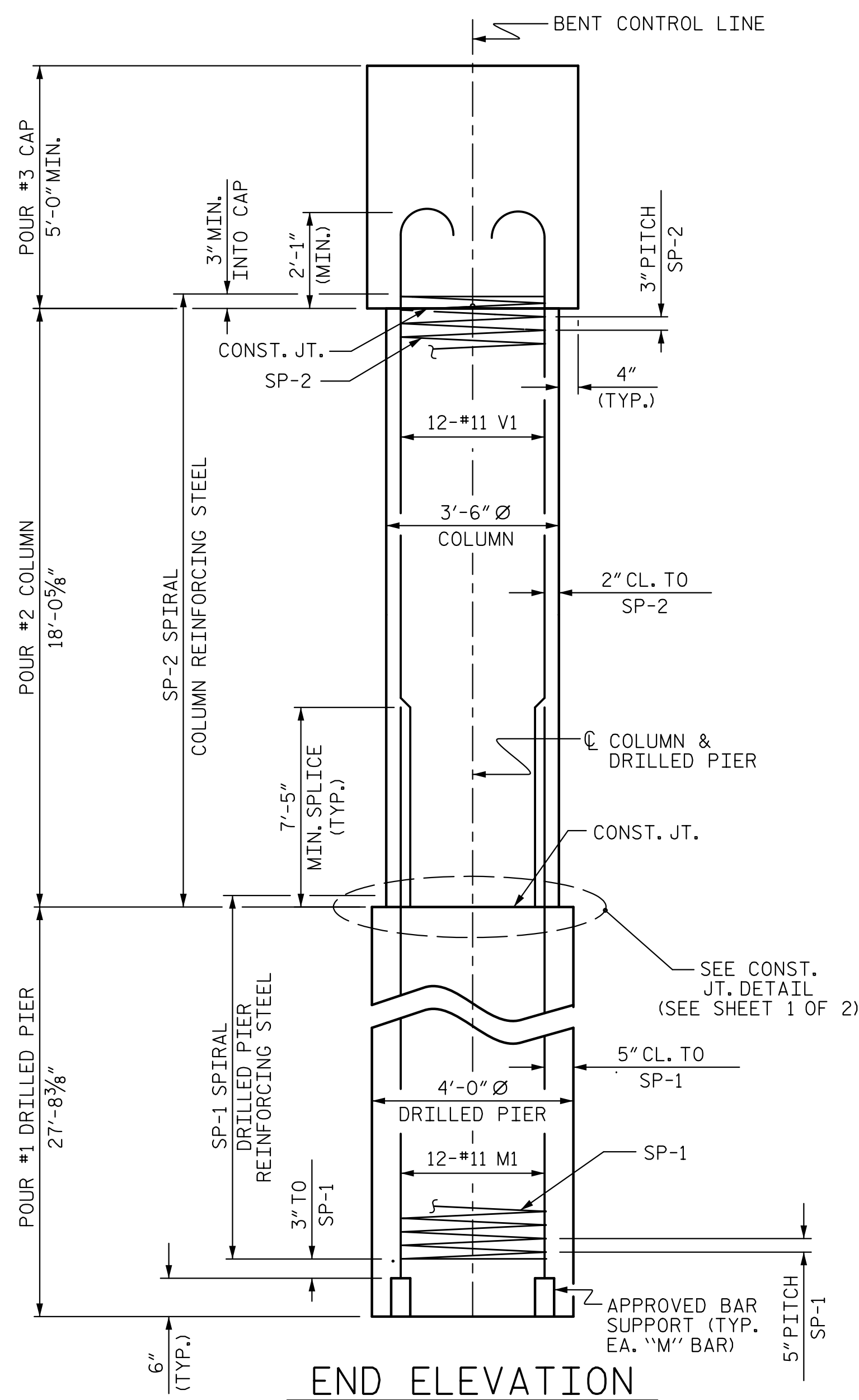
END OF CAP DETAIL (TYP.)



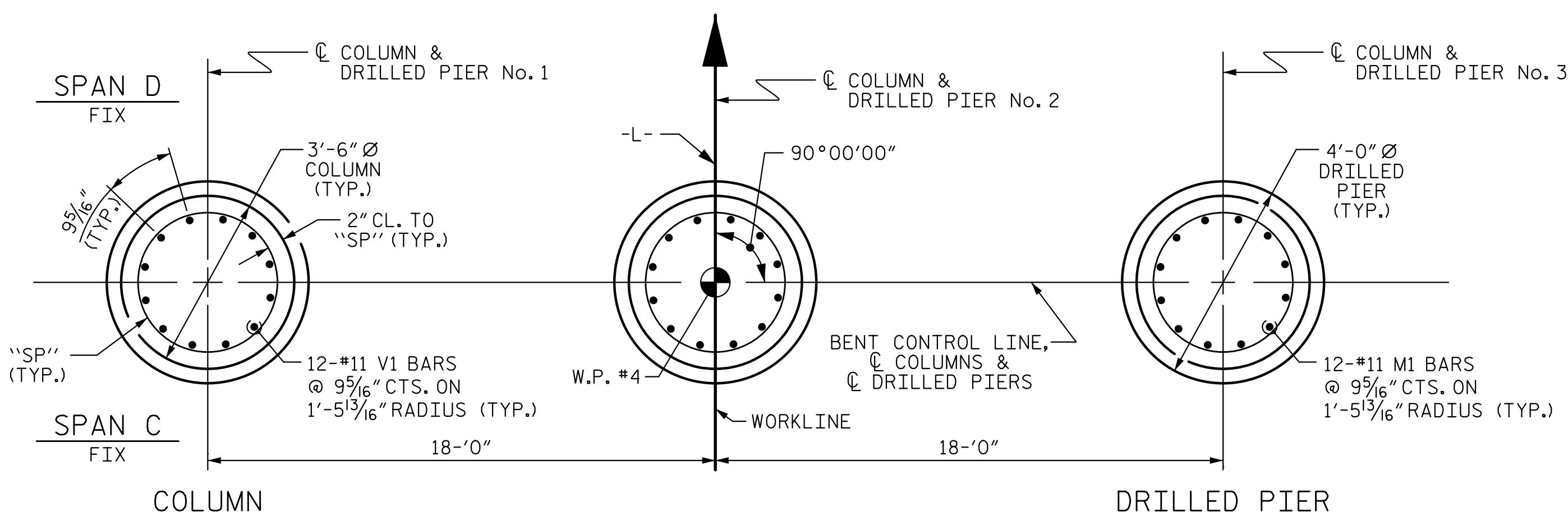
SECTION B-B



SECTION A-A



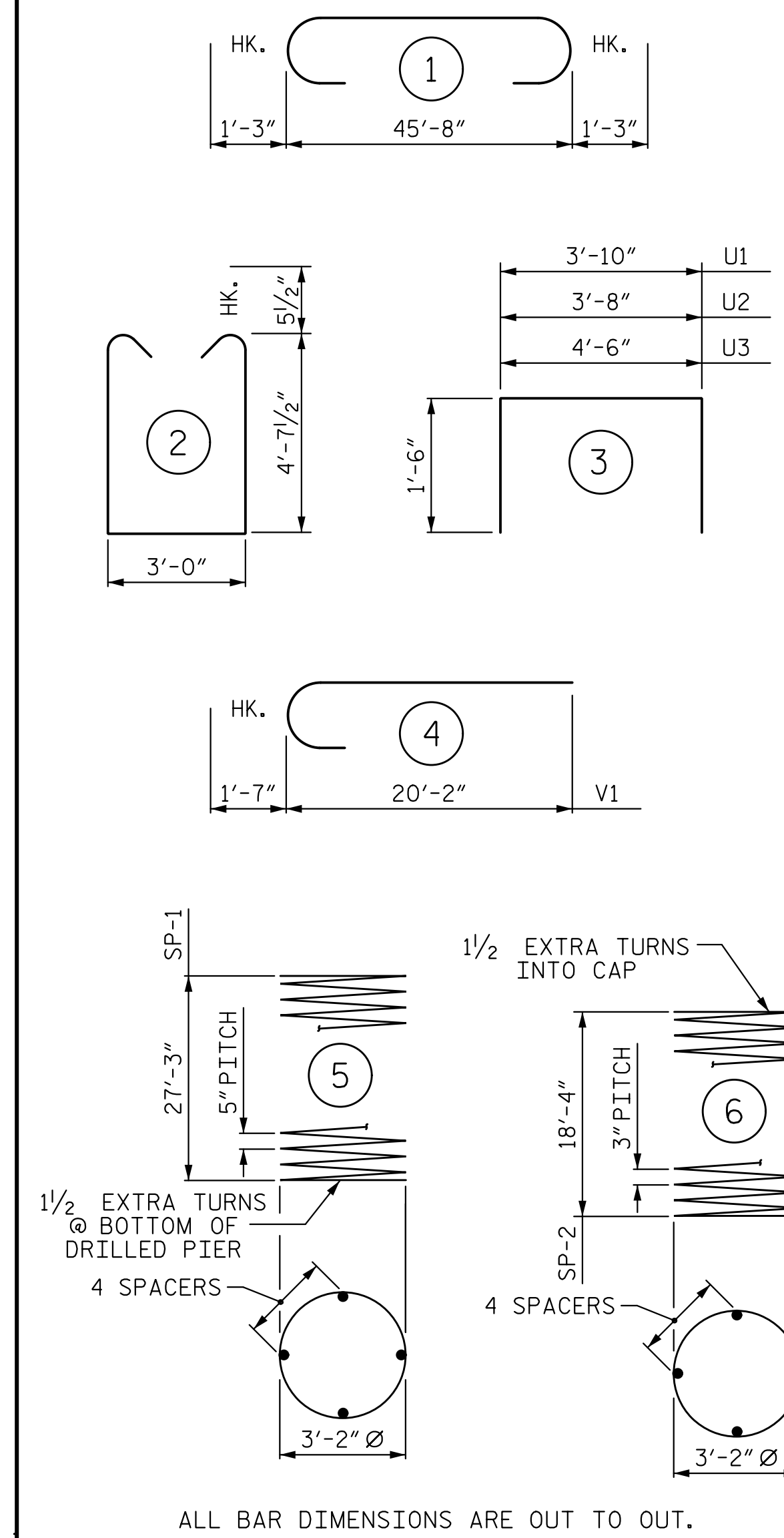
END ELEVATION



PLAN OF DRILLED PIERS & COLUMNS

(DETAILS ARE TYPICAL EACH DRILLED PIER & COLUMN)

BAR TYPES



ALL BAR DIMENSIONS ARE OUT TO OUT.

BILL OF MATERIAL

BENT 3

BAR	NO.	SIZE	TYPE	LENGTH	WEIGHT
B1	8	#10	STR	45'-10"	1,578
B2	10	#5	STR	45'-10"	478
B3	8	#9	1	48'-2"	1,310
B4	8	#4	STR	3'-10"	20
M1	36	#11	STR	37'-8"	7,204
S1	120	#5	2	13'-2"	1,648
U1	40	#4	3	6'-10"	183
U2	10	#4	3	6'-8"	45
U3	10	#4	3	7'-6"	50
V1	36	#11	4	21'-9"	4,160

REINFORCING STEEL 16,676 LBS.

BAR	NO.	SIZE	TYPE	LENGTH	WEIGHT
SP-1	3	*	5	656'-3"	2,053
SP-2	3	**	6	734'-2"	1,471

SPIRAL COLUMN REINFORCING STEEL 3,524 LBS.

\*THE SP-1 SPIRAL REINFORCING STEEL SHALL BE W31 OR D-31 COLD DRAWN WIRE OR #5 PLAIN OR DEFORMED BAR  
 \*\*THE SP-2 SPIRAL REINFORCING STEEL SHALL BE W20 OR D-20 COLD DRAWN WIRE OR #4 PLAIN OR DEFORMED BAR

CLASS A CONCRETE BREAKDOWN

POUR #2 (COLUMNS)	19.3 C.Y.
POUR #3 (CAP)	36.6 C.Y.
TOTAL CLASS A CONCRETE	55.9 C.Y.

DRILLED PIERS:

DRILLED PIER CONCRETE	
POUR #1 (DRILLED PIERS)	38.7 C.Y.
4'-0" Ø DRILLED PIERS NOT IN SOIL	36.00 LIN. FT.
4'-0" Ø DRILLED PIERS IN SOIL	47.10 LIN. FT.
CSL TUBES	350.4 LIN. FT.

PROJECT NO. W-5516

ROWAN COUNTY

STATION: 61+79.40 -L-

SHEET 2 OF 2

STATE OF NORTH CAROLINA  
 DEPARTMENT OF TRANSPORTATION  
 RALEIGH

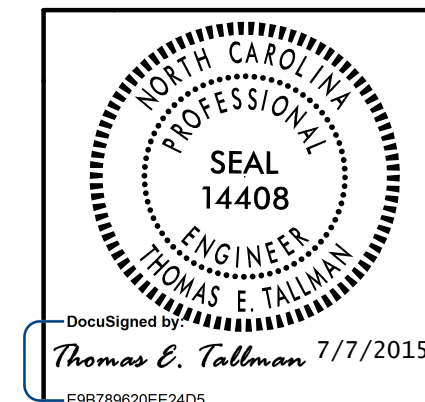
SUBSTRUCTURE

BENT 3

REVISIONS

NO.	BY:	DATE:	NO.	BY:	DATE:
1			3		
2			4		

SHEET NO.
S-33
TOTAL SHEETS
41



5/28/2015 10:53 AM C:\Users\pep\Documents\Projects\5516 - w-5516 - sd.b3.02.dgn  
 T.E. Tallman, Inc.

DRAWN BY : D. H. CARTER DATE : MAY 2015  
 CHECKED BY : M. T. NEIHEISEL DATE : MAY 2015  
 DESIGN ENGINEER OF RECORD : T. E. TALLMAN DATE : MAY 2015