

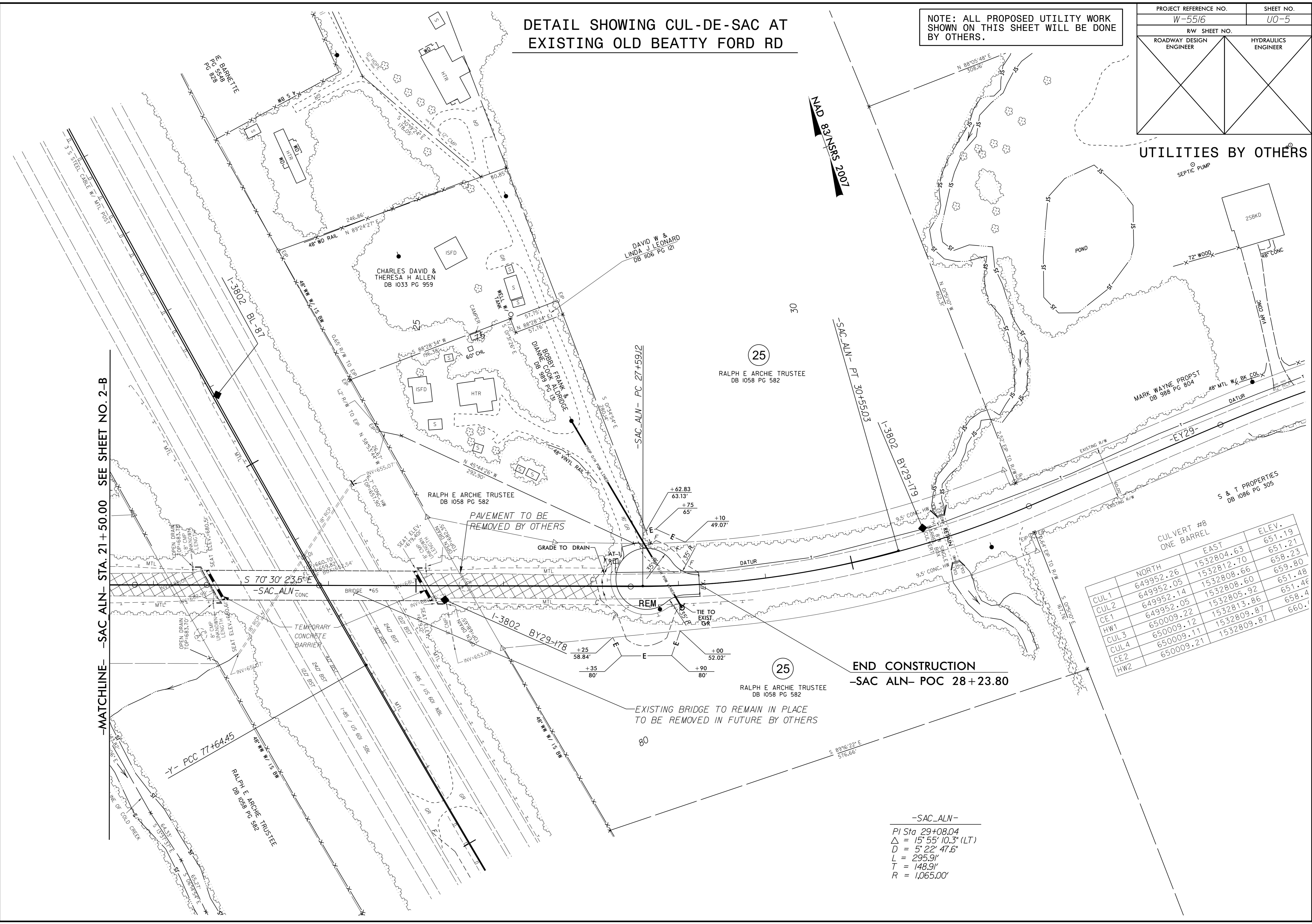
5/14/99

DETAIL SHOWING CUL-DE-SAC AT EXISTING OLD BEATTY FORD RD

NOTE: ALL PROPOSED UTILITY WORK SHOWN ON THIS SHEET WILL BE DONE BY OTHERS.

PROJECT REFERENCE NO. W-5516	SHEET NO. UO-5
RW SHEET NO.	
ROADWAY DESIGN ENGINEER	HYDRAULICS ENGINEER

UTILITIES BY OTHERS



-MATCHLINE- SAC ALN- STA. 21+50.00 SEE SHEET NO. 2-B

END CONSTRUCTION
-SAC ALN- POC 28+23.80

CULVERT #8 ONE BARREL	CULVERT #8 ONE BARREL		ELEV.
	NORTH	EAST	
CUL1	649952.26	1532804.63	651.19
CUL2	649952.05	1532812.70	651.21
CE1	649952.14	1532808.66	658.23
CUL3	650009.22	1532805.92	651.48
CUL4	650009.12	1532813.86	651.46
CE2	650009.11	1532809.87	658.4
HW2	650009.21	1532809.87	660.0

-SAC_ALN-
 PI Sta 29+08.04
 $\Delta = 15^\circ 55' 10.3''$ (LT)
 $D = 5^\circ 22' 47.6''$
 $L = 295.91'$
 $T = 148.91'$
 $R = 1,065.00'$

3..w5516.dwg - JUL-2015 11:08 Rd\Utilities\UBD\w5516.dwg - uo-5.dgn