

| | |
|-------------------------|---------------------|
| PROJECT REFERENCE NO. | SHEET NO. |
| W-5516 | U0-4 |
| RW SHEET NO. | |
| ROADWAY DESIGN ENGINEER | HYDRAULICS ENGINEER |

NOTE: ALL PROPOSED UTILITY WORK SHOWN ON THIS SHEET WILL BE DONE BY OTHERS.

UTILITIES BY OTHERS

$L = 1,257.79'$
 $T = 756.17'$
 $R = 900.00'$
 $SE = .08$
 $DS = 50$ MPH

$L = 139.59'$
 $T = 69.80'$
 $R = 22,918.31'$

$L = 728.33'$
 $T = 389.29'$
 $R = 833.00'$
 $SE = .06$

PI Sta 10+92.82
 $\Delta = 69^\circ 57' 24.0"$ (RT)
 $D = 57' 17" 44.8"$
 $L = 122.10'$
 $T = 69.96'$
 $R = 100.00'$

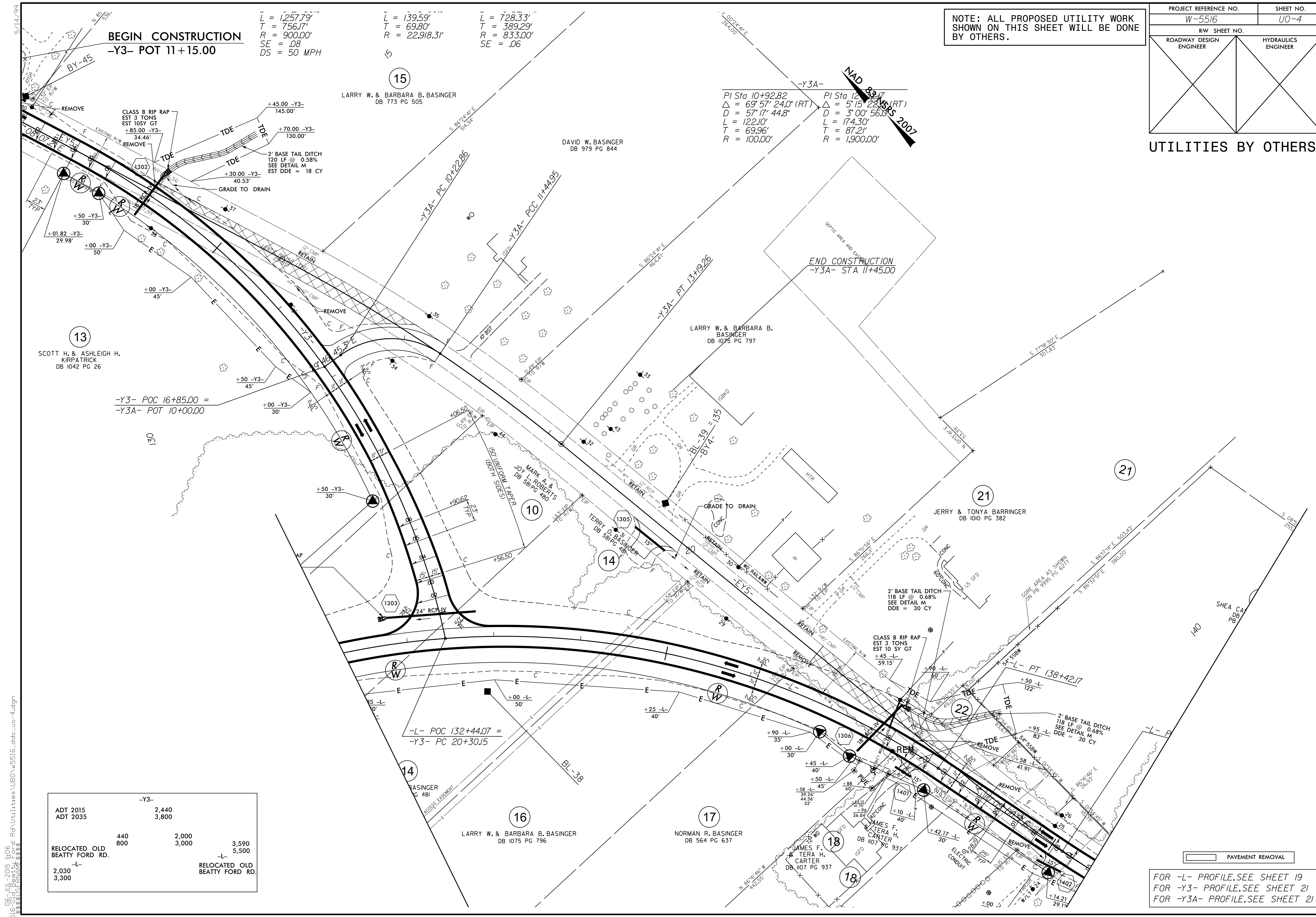
PI Sta 12+39.17
 $\Delta = 5^\circ 15' 22.33"$ (RT)
 $D = 3' 00" 56.00"$
 $L = 174.30'$
 $T = 87.21'$
 $R = 1,900.00'$

BEGIN CONSTRUCTION
-Y3- POT 11+15.00

END CONSTRUCTION
-Y3A- STA 11+45.00

| | | |
|-------------------------------|-------|-------------------------------|
| | -Y3- | |
| ADT 2015 | 2,440 | |
| ADT 2035 | 3,800 | |
| RELOCATED OLD BEATTY FORD RD. | 440 | 2,000 |
| | 800 | 3,590 |
| | | 5,500 |
| 2,030 | | |
| 3,300 | | |
| | | RELOCATED OLD BEATTY FORD RD. |

FOR -L- PROFILE, SEE SHEET 19
 FOR -Y3- PROFILE, SEE SHEET 21
 FOR -Y3A- PROFILE, SEE SHEET 21



3:\w5516_06-Jul-2015 11:06 Rd\Utilities\U0\w5516_ddc_uo-4.dgn