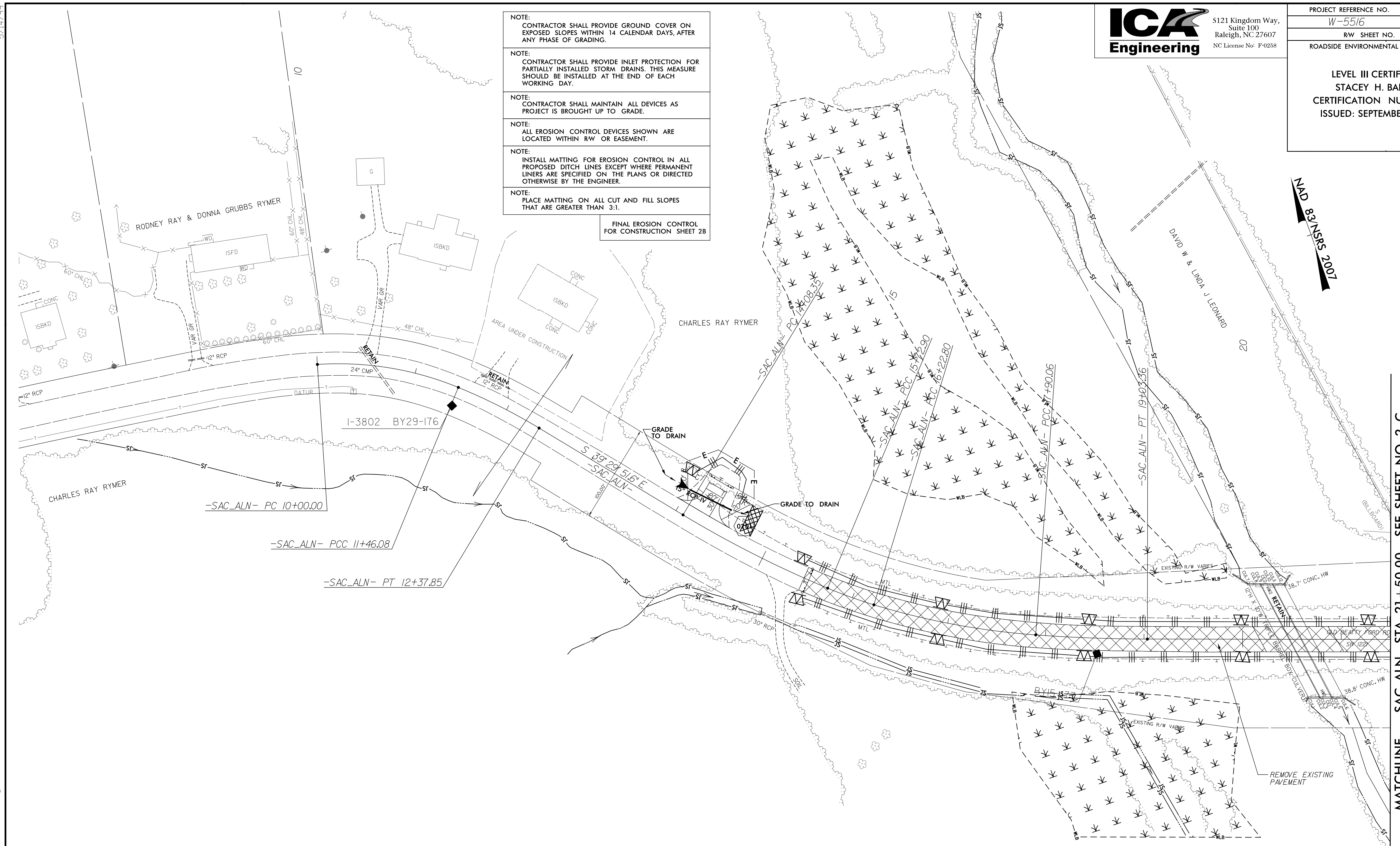


- NOTE:
CONTRACTOR SHALL PROVIDE GROUND COVER ON EXPOSED SLOPES WITHIN 14 CALENDAR DAYS, AFTER ANY PHASE OF GRADING.
- NOTE:
CONTRACTOR SHALL PROVIDE INLET PROTECTION FOR PARTIALLY INSTALLED STORM DRAINS. THIS MEASURE SHOULD BE INSTALLED AT THE END OF EACH WORKING DAY.
- NOTE:
CONTRACTOR SHALL MAINTAIN ALL DEVICES AS PROJECT IS BROUGHT UP TO GRADE.
- NOTE:
ALL EROSION CONTROL DEVICES SHOWN ARE LOCATED WITHIN RW OR EASEMENT.
- NOTE:
INSTALL MATTING FOR EROSION CONTROL IN ALL PROPOSED DITCH LINES EXCEPT WHERE PERMANENT LINERS ARE SPECIFIED ON THE PLANS OR DIRECTED OTHERWISE BY THE ENGINEER.
- NOTE:
PLACE MATTING ON ALL CUT AND FILL SLOPES THAT ARE GREATER THAN 3:1.

FINAL EROSION CONTROL FOR CONSTRUCTION SHEET 2B



NAD 83 NSRS 2007

-MATCHLINE- -SAC_ALN- STA. 21 + 50.00 SEE SHEET NO. 2-C

| -SAC_ALN- | | | |
|------------------------------------|-----------------------------------|-----------------------------------|-----------------------------------|
| PI Sta 10+74.34 | PI Sta 11+92.06 | PI Sta 14+90.77 | PI Sta 15+97.87 |
| $\Delta = 26^{\circ}09'21.6"$ (RT) | $\Delta = 8^{\circ}45'47.1"$ (RT) | $\Delta = 8^{\circ}27'18.8"$ (LT) | $\Delta = 5^{\circ}43'07.5"$ (LT) |
| D = 17' 54' 17.8" | D = 9' 32' 57.5" | D = 5' 08' 19.1" | D = 11' 27' 33.0" |
| L = 146.08' | L = 91.77' | L = 164.54' | L = 49.91' |
| T = 74.34' | T = 45.97' | T = 82.42' | T = 24.97' |
| R = 320.00' | R = 600.00' | R = 1,115.00' | R = 500.00' |
| PI Sta 17+06.78 | | PI Sta 18+46.73 | |
| $\Delta = 12^{\circ}46'38.3"$ (LT) | | $\Delta = 4^{\circ}03'27.3"$ (LT) | |
| D = 7' 38' 22.0" | | D = 3' 34' 51.5" | |
| L = 167.25' | | L = 113.31' | |
| T = 83.98' | | T = 56.68' | |
| R = 750.00' | | R = 1,600.00' | |

9/10/2014 9:10:20 AM C:\add\w5516_hyd_erosion_final_psh28_02B.dgn ICA ENGINEERING, INC.