

5/14/99

NAD 83/NSRS 2007

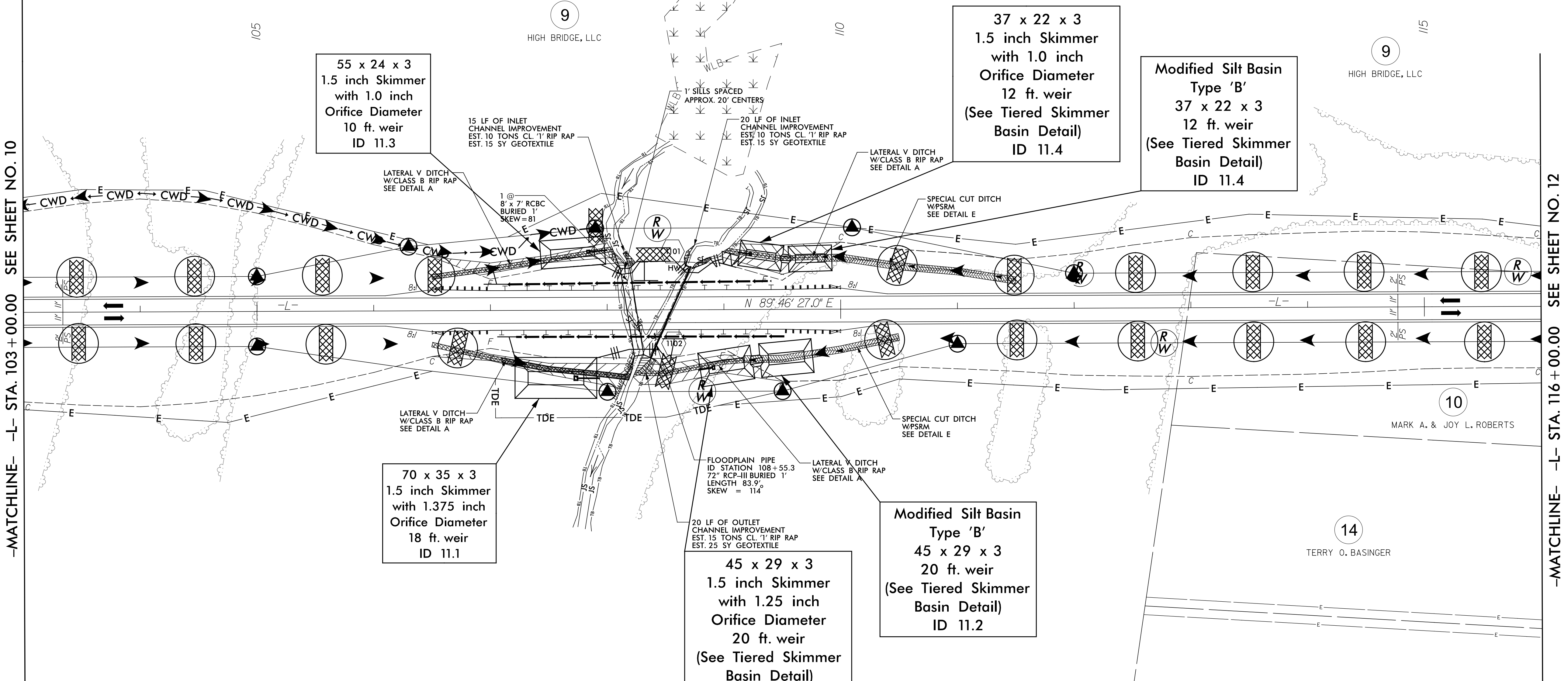
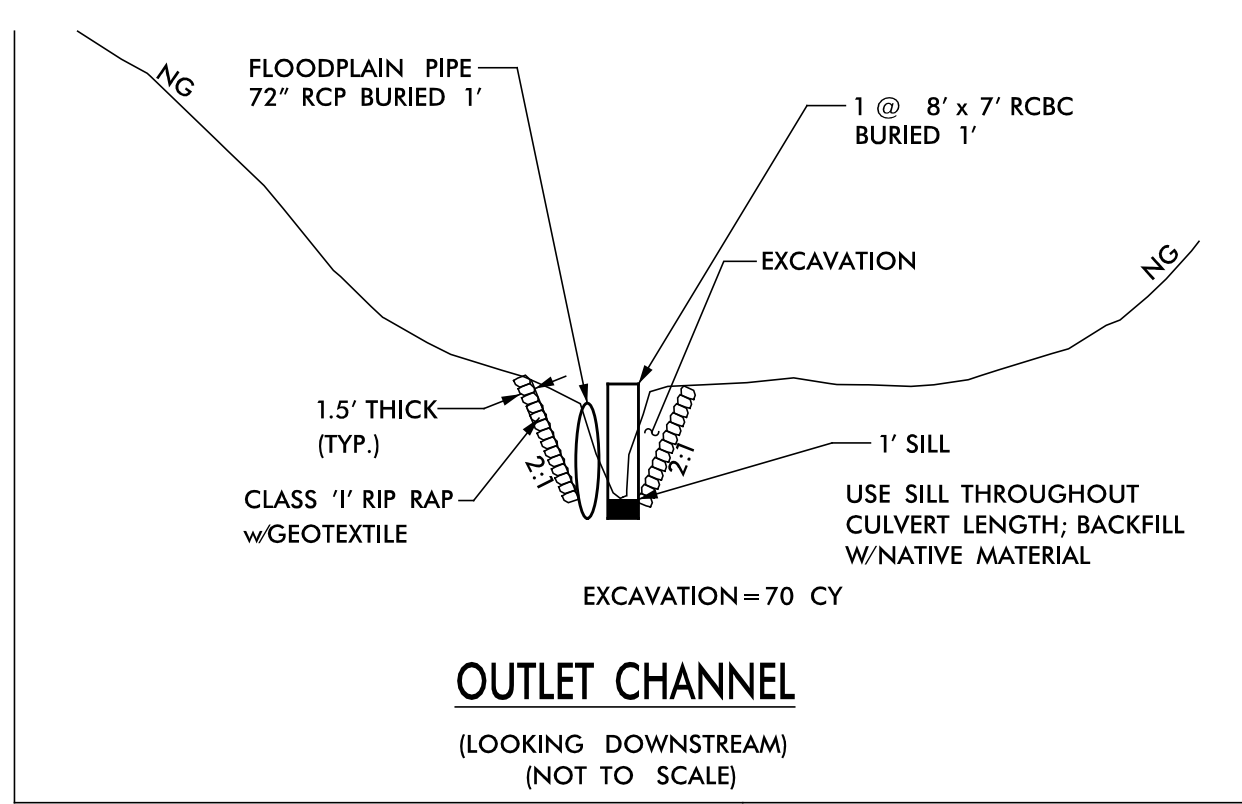
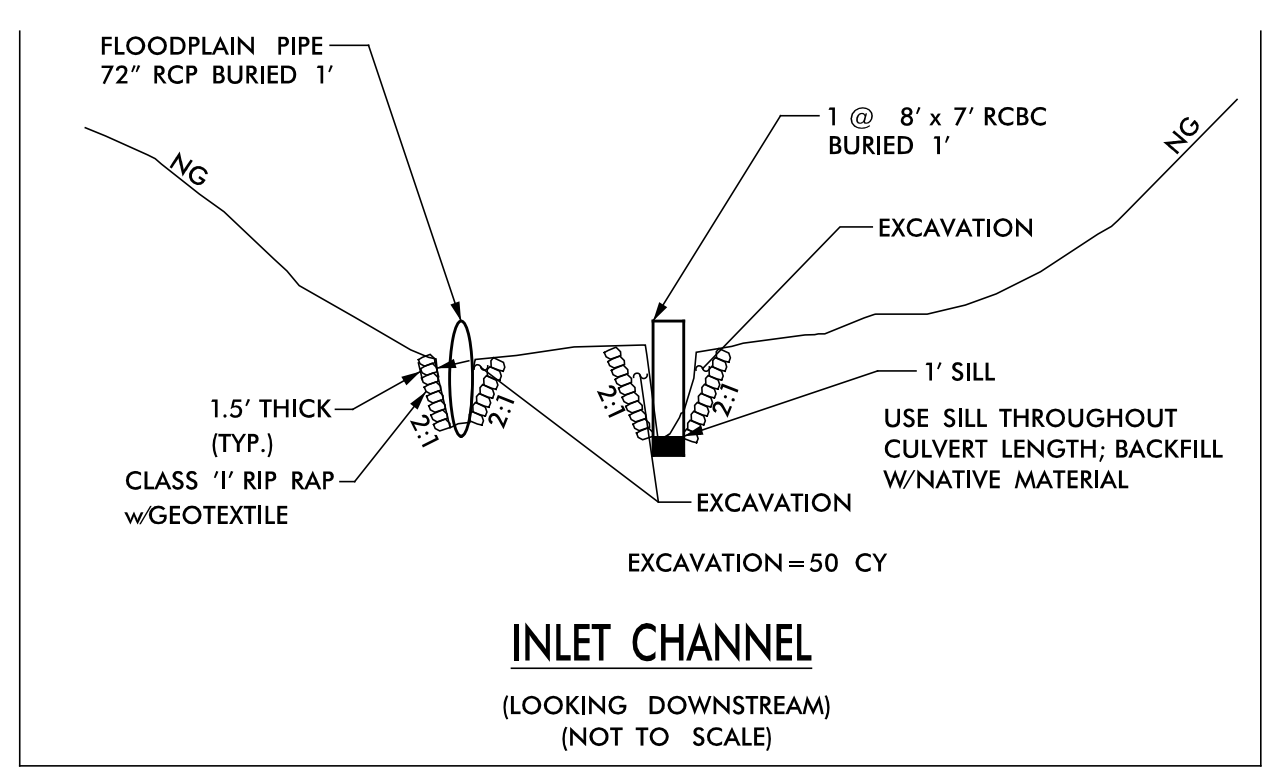


5121 Kingdom Way,
Suite 100
Raleigh, NC 27607
NC License No: P-0258

PROJECT REFERENCE NO. W-5516 SHEET NO. EC-24/CONST II

RW SHEET NO. ROADSIDE ENVIRONMENTAL PROJECT ENGINEER

LEVEL III CERTIFIED BY:
STACEY H. BAILEY, PE
CERTIFICATION NUMBER: 3074
ISSUED: MAY 26, 2015



55 x 24 x 3
1.5 inch Skimmer
with 1.0 inch
Orifice Diameter
10 ft. weir
ID 11.3

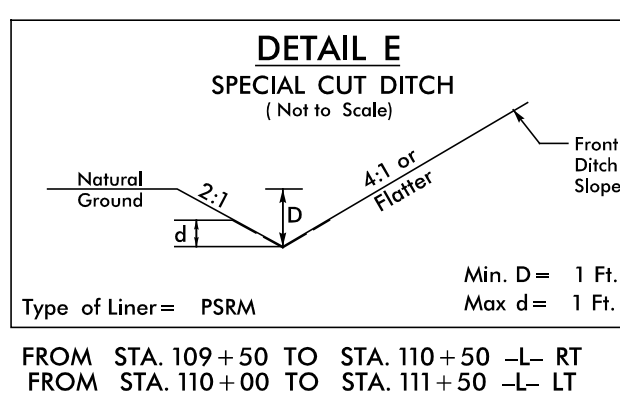
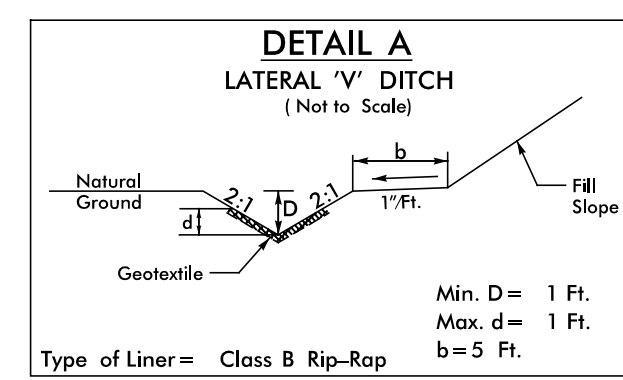
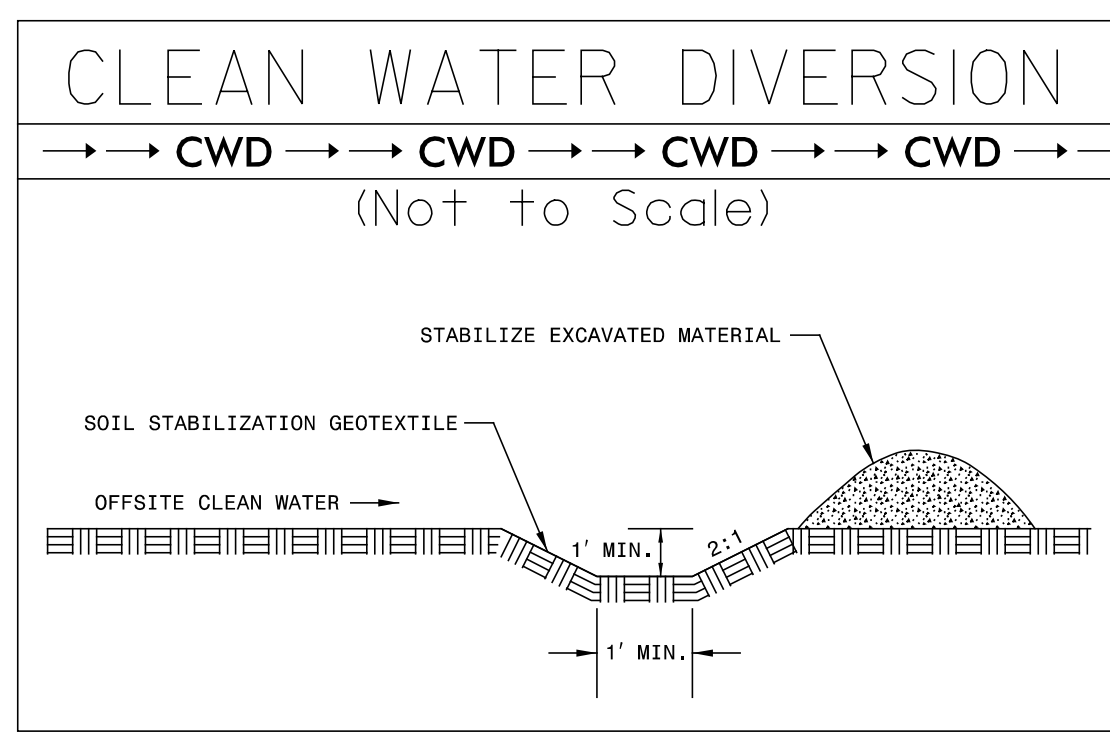
37 x 22 x 3
1.5 inch Skimmer
with 1.0 inch
Orifice Diameter
12 ft. weir
(See Tiered Skimmer
Basin Detail)
ID 11.4

Modified Silt Basin
Type 'B'
37 x 22 x 3
12 ft. weir
(See Tiered Skimmer
Basin Detail)
ID 11.4

70 x 35 x 3
1.5 inch Skimmer
with 1.375 inch
Orifice Diameter
18 ft. weir
ID 11.1

45 x 29 x 3
1.5 inch Skimmer
with 1.25 inch
Orifice Diameter
20 ft. weir
(See Tiered Skimmer
Basin Detail)
ID 11.2

Modified Silt Basin
Type 'B'
45 x 29 x 3
20 ft. weir
(See Tiered Skimmer
Basin Detail)
ID 11.2



- NOTE: CONTRACTOR SHALL PROVIDE GROUND COVER ON EXPOSED SLOPES WITHIN 14 CALENDAR DAYS, AFTER ANY PHASE OF GRADING.
- NOTE: CONTRACTOR SHALL PROVIDE INLET PROTECTION FOR PARTIALLY INSTALLED STORM DRAINS. THIS MEASURE SHOULD BE INSTALLED AT THE END OF EACH WORKING DAY.
- NOTE: CONTRACTOR SHALL MAINTAIN ALL DEVICES AS PROJECT IS BROUGHT UP TO GRADE.
- NOTE: ALL EROSION CONTROL DEVICES SHOWN ARE LOCATED WITHIN RW OR EASEMENT.
- NOTE: INSTALL MATTING FOR EROSION CONTROL IN ALL PROPOSED DITCH LINES EXCEPT WHERE PERMANENT LINERS ARE SPECIFIED ON THE PLANS OR DIRECTED OTHERWISE BY THE ENGINEER.
- NOTE: PLACE MATTING ON ALL CUT AND FILL SLOPES THAT ARE GREATER THAN 3:1.

FINAL EROSION CONTROL FOR CONSTRUCTION SHEET 11

6/1/2015 cadd\w5516_hyd_erosion_final_psh_11.dgn