

-Y-  
 $PI\ Sta\ 44+63.14$   
 $\Delta = 12' 28'' 03.6'' (LT)$   
 $D = 0' 29'' 15.8''$   
 $L = 2556.26'$   
 $T = 1283.20'$   
 $R = 11,747.41'$

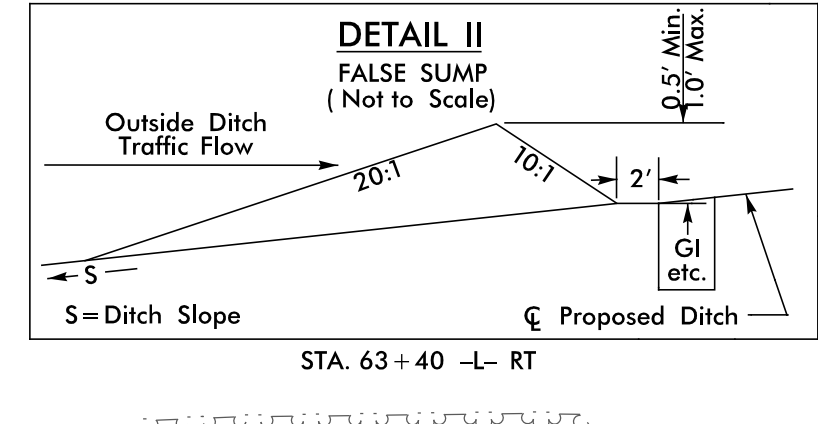
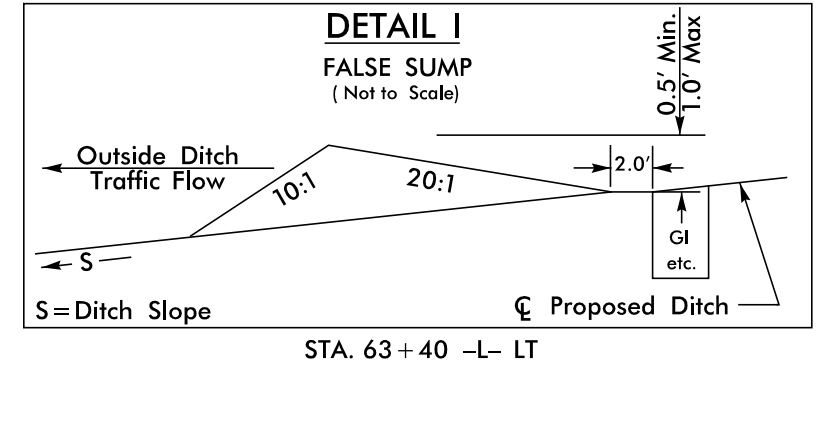
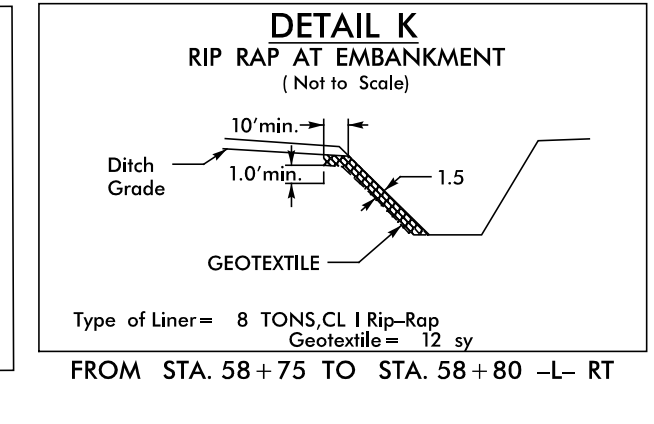
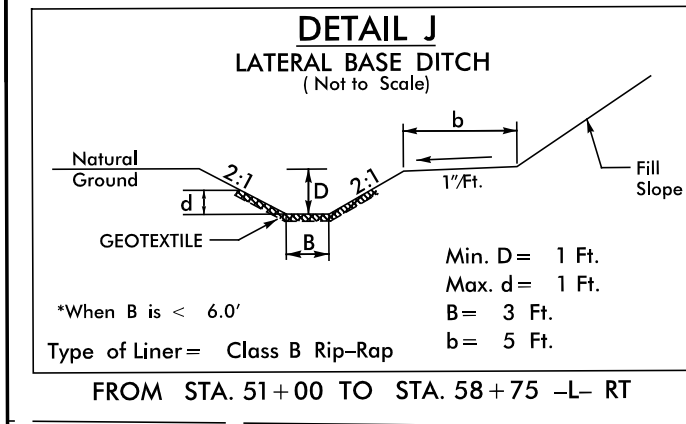
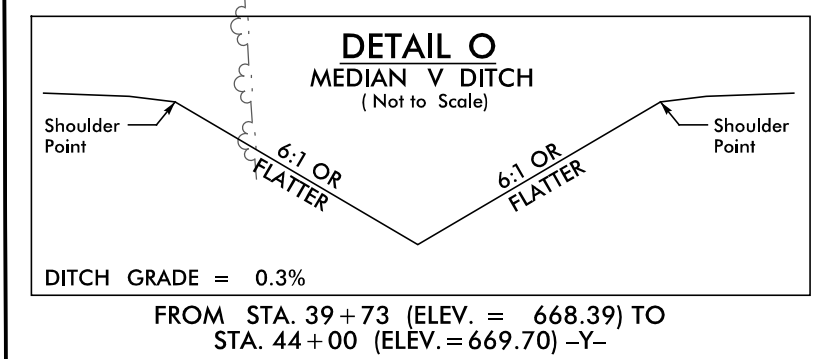
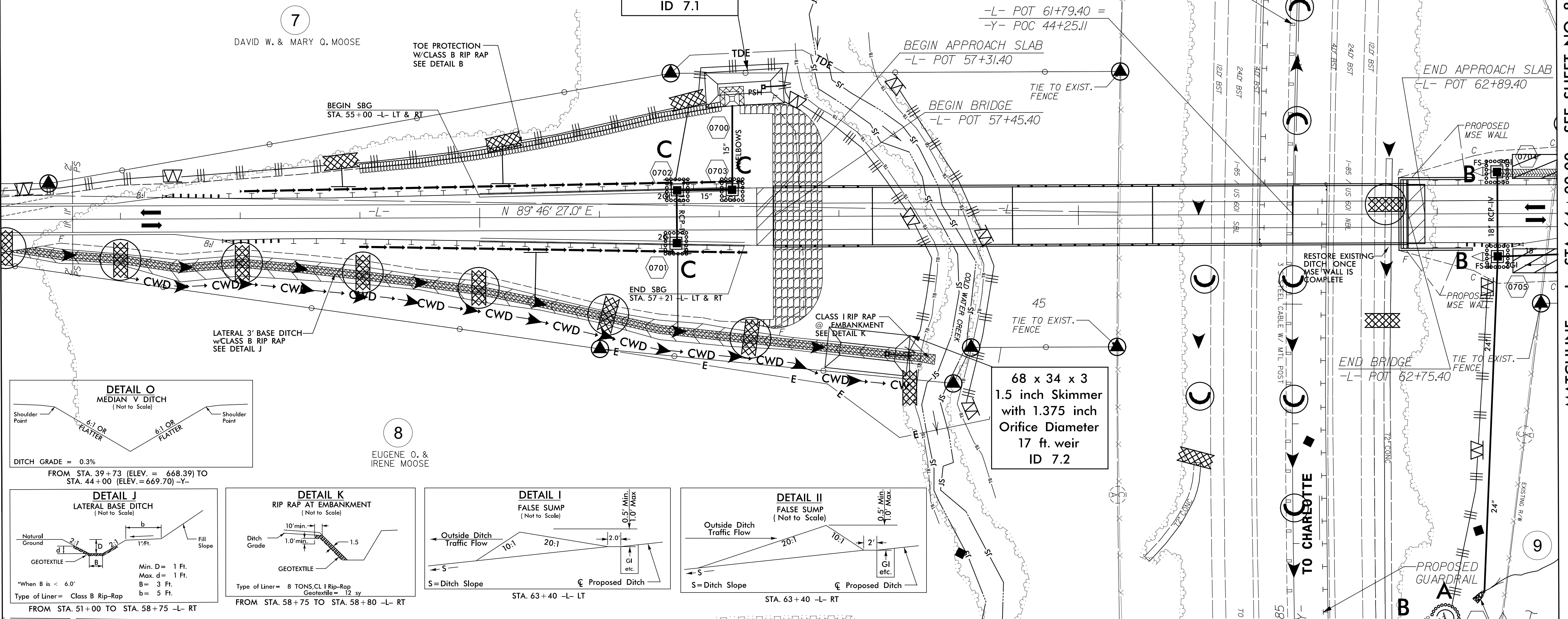
DECK DRAINS REQUIRED  
 6" DIAMETER SCUPPERS ON 12' CENTERS  
 FROM STA. 57+20 TO STA. 58+16 RT. & LT.  
 FROM STA. 59+61 TO STA. 60+57 RT. & LT.  
 FROM STA. 60+67 TO STA. 60+79 RT. & LT.

65 x 29 x 3  
 1.5 inch Skimmer  
 with 1.25 inch  
 Orifice Diameter  
 14 ft. weir  
 ID 7.1

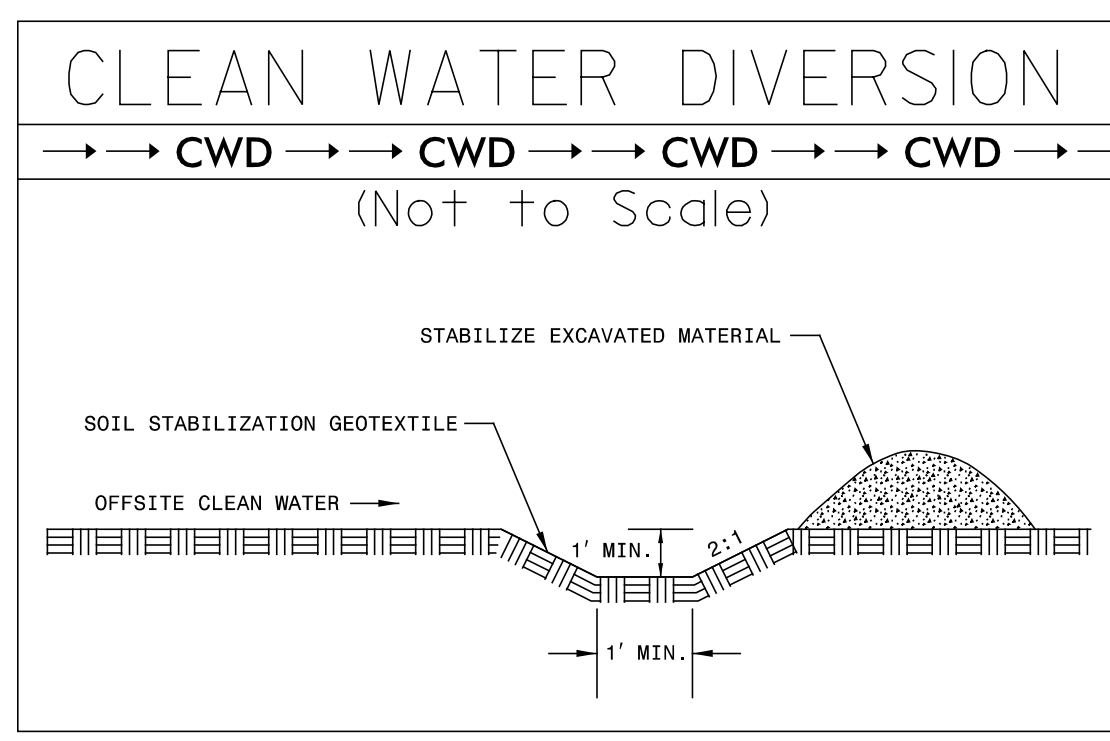
68 x 34 x 3  
 1.5 inch Skimmer  
 with 1.375 inch  
 Orifice Diameter  
 17 ft. weir  
 ID 7.2

-MATCHLINE- -L- STA. 51+00.00 SEE SHEET NO. 6

-MATCHLINE- -L- STA. 64+00.00 SEE SHEET NO. 8



- NOTE: CONTRACTOR SHALL PROVIDE GROUND COVER ON EXPOSED SLOPES WITHIN 14 CALENDAR DAYS, AFTER ANY PHASE OF GRADING.
- NOTE: CONTRACTOR SHALL PROVIDE INLET PROTECTION FOR PARTIALLY INSTALLED STORM DRAINS. THIS MEASURE SHOULD BE INSTALLED AT THE END OF EACH WORKING DAY.
- NOTE: CONTRACTOR SHALL MAINTAIN ALL DEVICES AS PROJECT IS BROUGHT UP TO GRADE.
- NOTE: ALL EROSION CONTROL DEVICES SHOWN ARE LOCATED WITHIN RW OR EASEMENT.
- NOTE: INSTALL MATTING FOR EROSION CONTROL IN ALL PROPOSED DITCH LINES EXCEPT WHERE PERMANENT LINERS ARE SPECIFIED ON THE PLANS OR DIRECTED OTHERWISE BY THE ENGINEER.
- NOTE: PLACE MATTING ON ALL CUT AND FILL SLOPES THAT ARE GREATER THAN 3:1.



9/10/2014 9:04:56 AM C:\pds\w5516\_hyd\_erosion\_f.mxd psh\_07.dgn ICA ENGINEERING, INC.