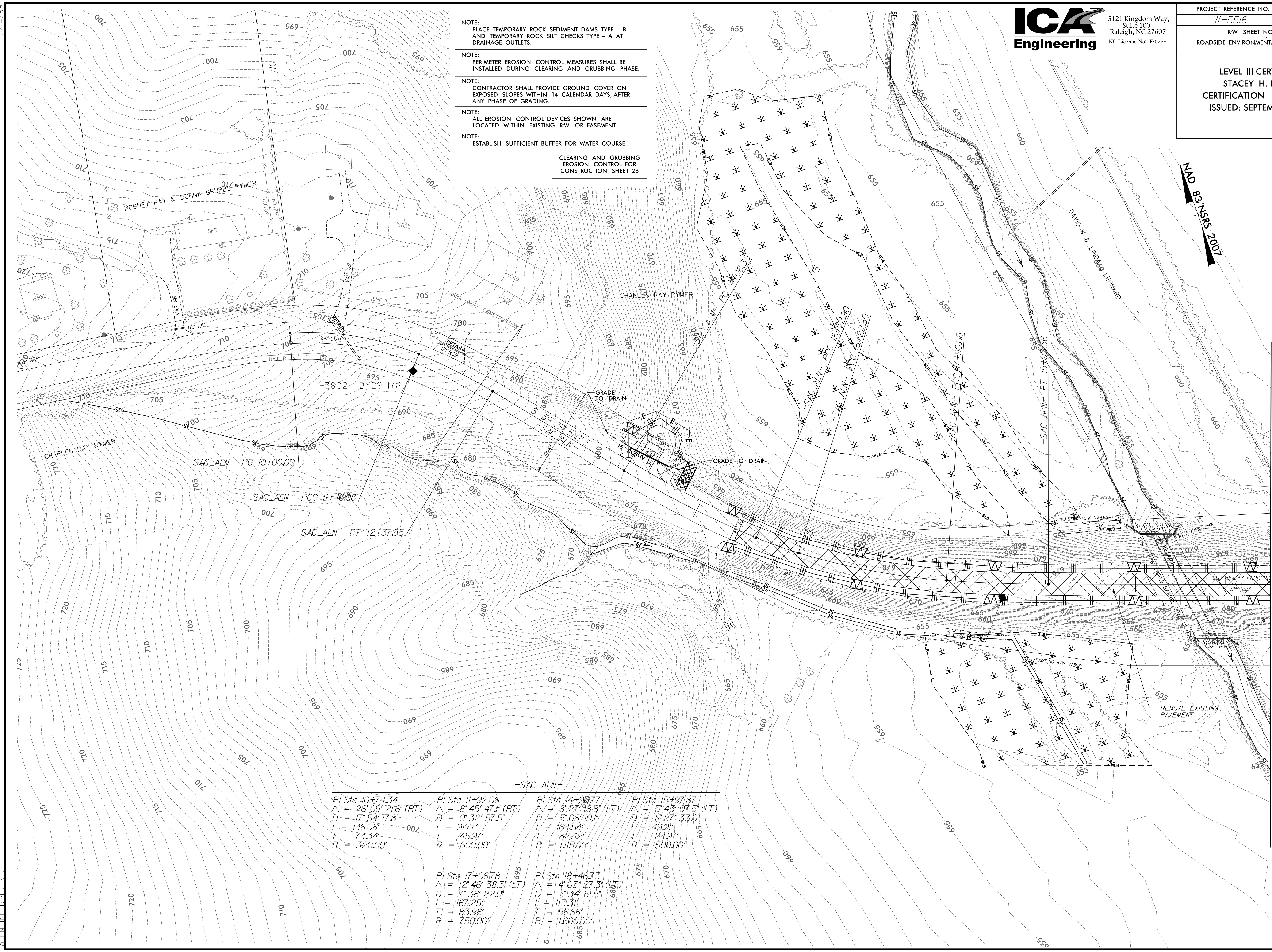


8/10/2014 9:10:20 AM C:\Users\psh15\OneDrive\Documents\516_hyd_erosion_c&g_psh15_02B.dgn ICA ENGINEERING, INC.



PROJECT REFERENCE NO.	SHEET NO.
W-5516	EC-15/CONST.2B
RW SHEET NO.	
ROADSIDE ENVIRONMENTAL PROJECT ENGINEER	
LEVEL III CERTIFIED BY: STACEY H. BAILEY, PE CERTIFICATION NUMBER: 3074 ISSUED: SEPTEMBER 15, 2014	

- NOTE:
 PLACE TEMPORARY ROCK SEDIMENT DAMS TYPE - B AND TEMPORARY ROCK SILT CHECKS TYPE - A AT DRAINAGE OUTLETS.
- NOTE:
 PERIMETER EROSION CONTROL MEASURES SHALL BE INSTALLED DURING CLEARING AND GRUBBING PHASE.
- NOTE:
 CONTRACTOR SHALL PROVIDE GROUND COVER ON EXPOSED SLOPES WITHIN 14 CALENDAR DAYS, AFTER ANY PHASE OF GRADING.
- NOTE:
 ALL EROSION CONTROL DEVICES SHOWN ARE LOCATED WITHIN EXISTING RW OR EASEMENT.
- NOTE:
 ESTABLISH SUFFICIENT BUFFER FOR WATER COURSE.
- CLEARING AND GRUBBING EROSION CONTROL FOR CONSTRUCTION SHEET 2B



-SAC_ALN-			
PI Sta 10+74.34	PI Sta 11+92.06	PI Sta 14+98.77	PI Sta 15+97.87
$\Delta = 26^{\circ}09'21.6"$ (RT)	$\Delta = 8^{\circ}45'47.1"$ (RT)	$\Delta = 8^{\circ}27'48.8"$ (LT)	$\Delta = 5^{\circ}43'07.5"$ (LT)
D = 17^{\circ}54'17.8"	D = 9^{\circ}32'57.5"	D = 5^{\circ}08'19.1"	D = 11^{\circ}27'33.0"
L = 146.08'	L = 91.77'	L = 164.54'	L = 49.91'
T = 74.34'	T = 45.97'	T = 82.42'	T = 24.97'
R = 320.00'	R = 600.00'	R = 1,115.00'	R = 500.00'
PI Sta 17+06.78	PI Sta 18+46.73		
$\Delta = 12^{\circ}46'38.3"$ (LT)	$\Delta = 4^{\circ}03'27.3"$ (LT)		
D = 7^{\circ}38'22.0"	D = 3^{\circ}34'51.5"		
L = 167.25'	L = 113.31'		
T = 83.98'	T = 56.68'		
R = 750.00'	R = 1,600.00'		

-MATCHLINE- -SAC_ALN- STA. 21 + 50.00 SEE SHEET NO. 2-C