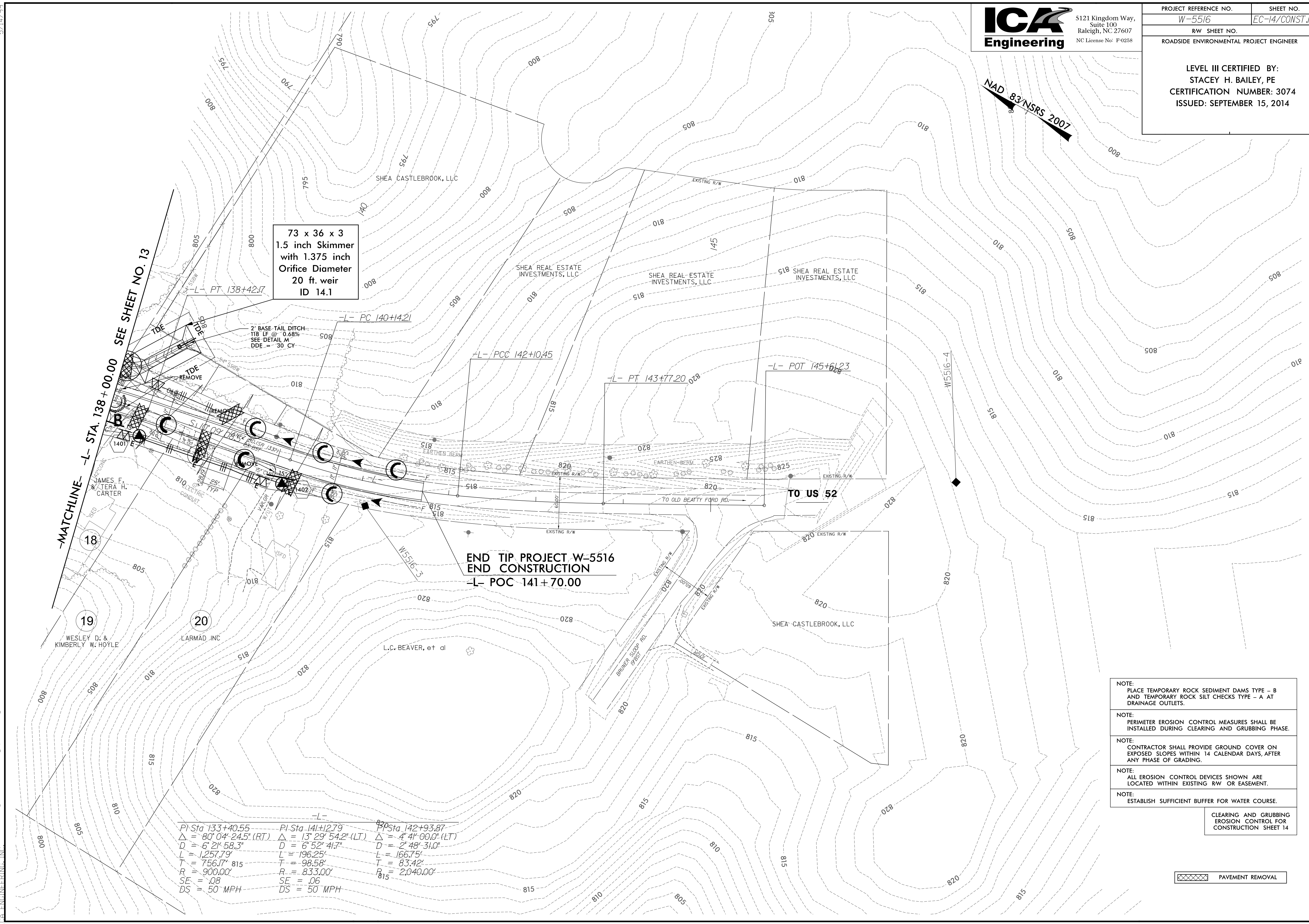




5121 Kingdom Way,  
Suite 100  
Raleigh, NC 27607  
NC License No: F-0258

|   |                |
|---|----------------|
| PROJECT REFERENCE NO.   | SHEET NO.      |
| W-5516  | EC-14/CONST.14 |
| RW SHEET NO.  |                |
| ROADSIDE ENVIRONMENTAL PROJECT ENGINEER   |                |
| LEVEL III CERTIFIED BY:<br>STACEY H. BAILEY, PE<br>CERTIFICATION NUMBER: 3074<br>ISSUED: SEPTEMBER 15, 2014 |                |

NAD 83/NSRS 2007



73 x 36 x 3  
1.5 inch Skimmer  
with 1.375 inch  
Orifice Diameter  
20 ft. weir  
ID 14.1

2' BASE TAIL DITCH  
118 LF @ 0.68%  
SEE DETAIL M  
DDE = 30 CY

END TIP PROJECT W-5516  
END CONSTRUCTION  
-L- POC 141+70.00

-MATCHLINE-  
-L- STA. 138+00.00 SEE SHEET NO. 13

|                                      |                                      |                                     |
|--------------------------------------|--------------------------------------|-------------------------------------|
| PI Sta 133+40.55                     | PI Sta 141+27.9                      | PI Sta 142+93.87                    |
| $\Delta = 80^{\circ} 04' 24.5" (RT)$ | $\Delta = 13^{\circ} 29' 54.2" (LT)$ | $\Delta = 4^{\circ} 41' 00.0" (LT)$ |
| D = 6' 21" 58.3"                     | D = 6' 52" 41.7"                     | D = 2' 48" 31.0"                    |
| L = 1,257.79'                        | L = 196.25'                          | L = 166.75'                         |
| T = 756.17'                          | T = 98.58'                           | T = 83.42'                          |
| R = 900.00'                          | R = 833.00'                          | R <sub>s</sub> = 2,040.00'          |
| SE = .08                             | SE = .06                             |                                     |
| DS = 50 MPH                          | DS = 50 MPH                          |                                     |

- NOTE:  
PLACE TEMPORARY ROCK SEDIMENT DAMS TYPE - B AND TEMPORARY ROCK SILT CHECKS TYPE - A AT DRAINAGE OUTLETS.
- NOTE:  
PERIMETER EROSION CONTROL MEASURES SHALL BE INSTALLED DURING CLEARING AND GRUBBING PHASE.
- NOTE:  
CONTRACTOR SHALL PROVIDE GROUND COVER ON EXPOSED SLOPES WITHIN 14 CALENDAR DAYS, AFTER ANY PHASE OF GRADING.
- NOTE:  
ALL EROSION CONTROL DEVICES SHOWN ARE LOCATED WITHIN EXISTING RW OR EASEMENT.
- NOTE:  
ESTABLISH SUFFICIENT BUFFER FOR WATER COURSE.

CLEARING AND GRUBBING  
EROSION CONTROL FOR  
CONSTRUCTION SHEET 14

PAVEMENT REMOVAL

9/10/2014 1:55:11 PM C:\Users\jca\Documents\Projects\W-5516-hyd-erosion\c&g\_psh\_14.dgn ICA ENGINEERING, INC