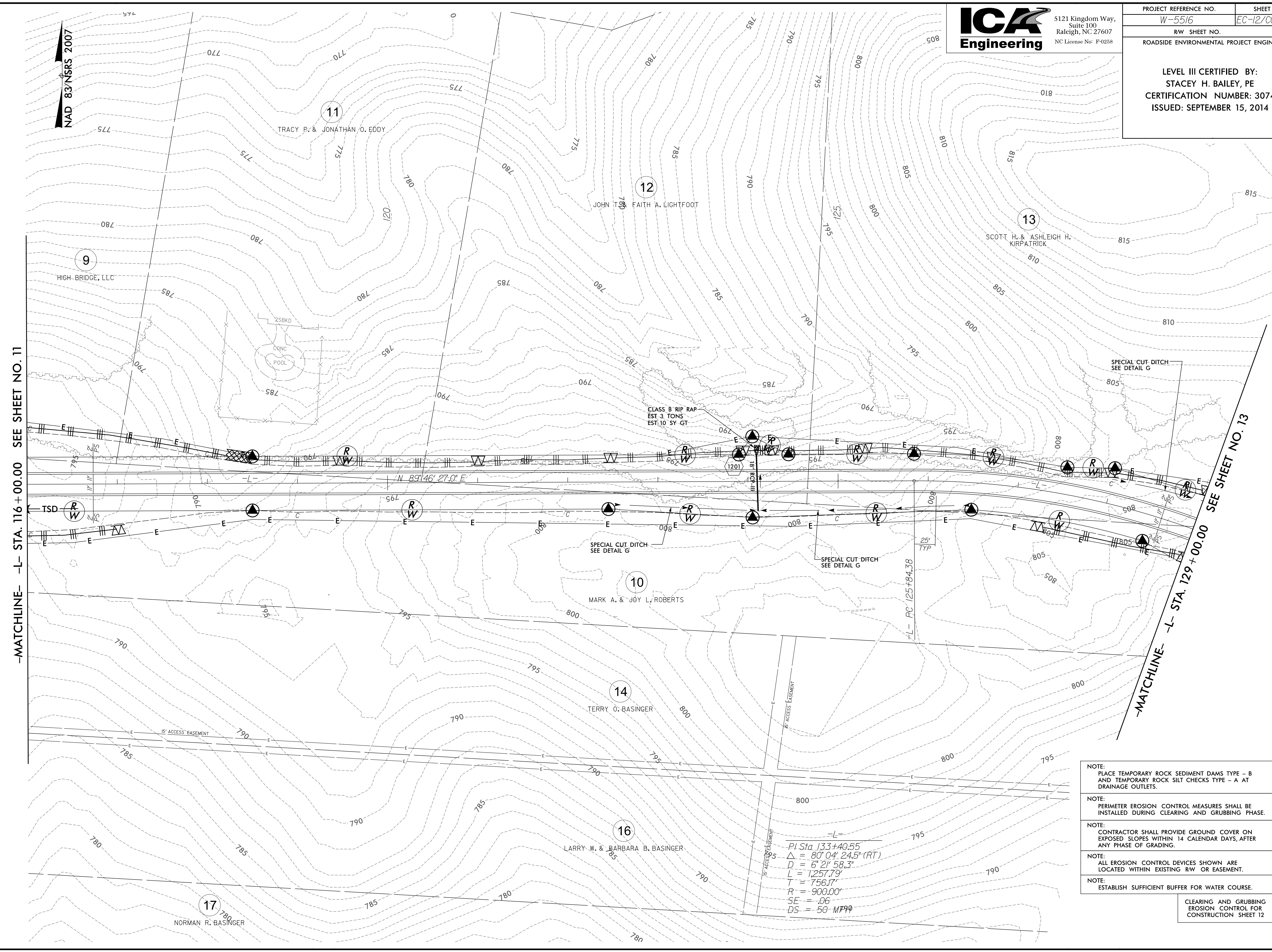


5/14/99  
9/10/2014  
I:\projects\5516\add\w5516-hyd-erosion\_c&g\_psh\_12.dgn  
P&E ENGINEERING, INC.

**ICA Engineering**  
5121 Kingdom Way,  
Suite 100  
Raleigh, NC 27607  
NC License No: P-0258

PROJECT REFERENCE NO.	SHEET NO.
W-5516	EC-12/CONST.12
RW SHEET NO.	
ROADSIDE ENVIRONMENTAL PROJECT ENGINEER	
LEVEL III CERTIFIED BY: STACEY H. BAILEY, PE CERTIFICATION NUMBER: 3074 ISSUED: SEPTEMBER 15, 2014	



- NOTE: PLACE TEMPORARY ROCK SEDIMENT DAMS TYPE - B AND TEMPORARY ROCK SILT CHECKS TYPE - A AT DRAINAGE OUTLETS.
  - NOTE: PERIMETER EROSION CONTROL MEASURES SHALL BE INSTALLED DURING CLEARING AND GRUBBING PHASE.
  - NOTE: CONTRACTOR SHALL PROVIDE GROUND COVER ON EXPOSED SLOPES WITHIN 14 CALENDAR DAYS, AFTER ANY PHASE OF GRADING.
  - NOTE: ALL EROSION CONTROL DEVICES SHOWN ARE LOCATED WITHIN EXISTING RW OR EASEMENT.
  - NOTE: ESTABLISH SUFFICIENT BUFFER FOR WATER COURSE.
- CLEARING AND GRUBBING EROSION CONTROL FOR CONSTRUCTION SHEET 12