

5/28/09

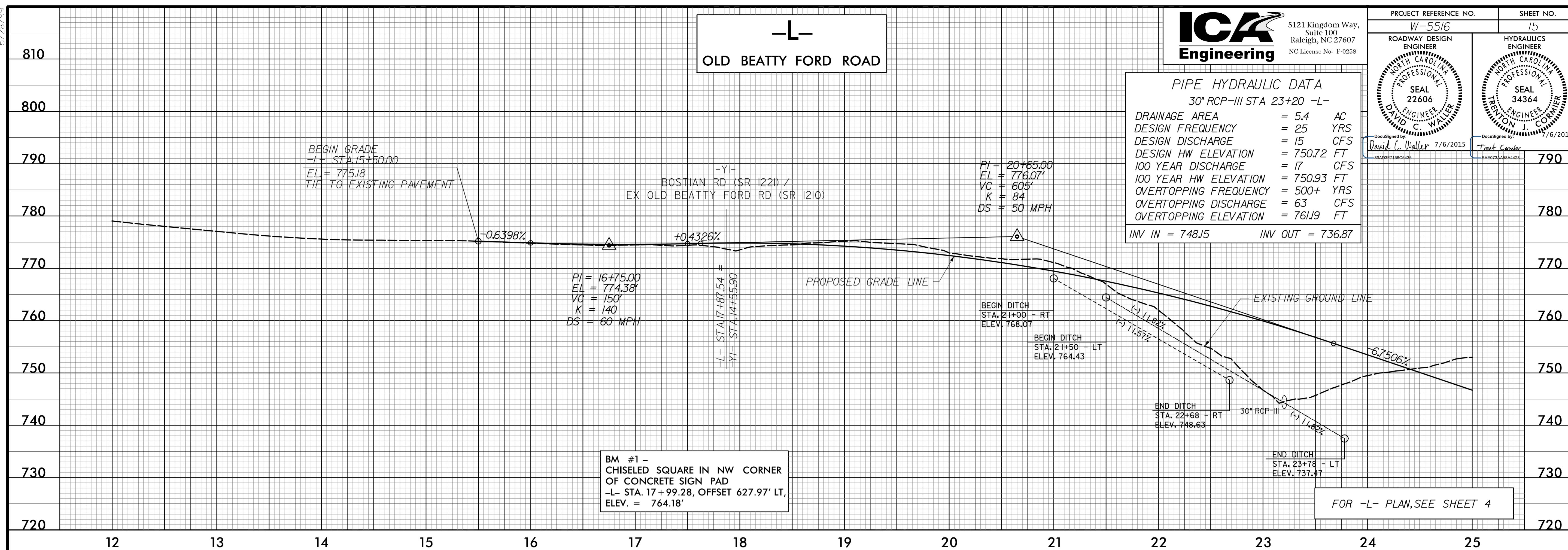


PROJECT REFERENCE NO. W-5516	SHEET NO. 15
ROADWAY DESIGN ENGINEER DAVID C. WALLER SEAL 22606 NORTH CAROLINA PROFESSIONAL ENGINEER	HYDRAULICS ENGINEER TREAT CORNIER SEAL 34364 NORTH CAROLINA PROFESSIONAL ENGINEER

**PIPE HYDRAULIC DATA**  
30" RCP-III STA 23+20 -L-

DRAINAGE AREA	= 5.4	AC
DESIGN FREQUENCY	= 25	YRS
DESIGN DISCHARGE	= 15	CFS
DESIGN HW ELEVATION	= 750.72	FT
100 YEAR DISCHARGE	= 17	CFS
100 YEAR HW ELEVATION	= 750.93	FT
OVERTOPPING FREQUENCY	= 500+	YRS
OVERTOPPING DISCHARGE	= 63	CFS
OVERTOPPING ELEVATION	= 761.19	FT

INV IN = 748.15    INV OUT = 736.87



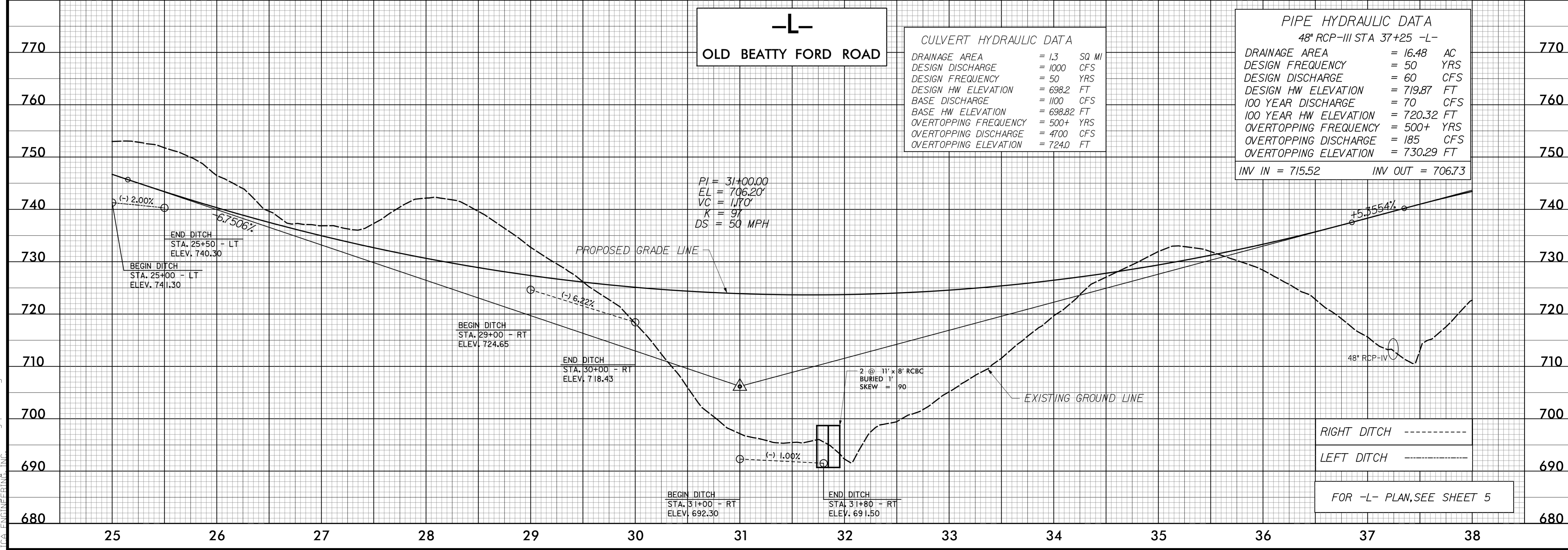
**CULVERT HYDRAULIC DATA**

DRAINAGE AREA	= 1.3	SQ MI
DESIGN DISCHARGE	= 1000	CFS
DESIGN FREQUENCY	= 50	YRS
DESIGN HW ELEVATION	= 698.2	FT
BASE DISCHARGE	= 100	CFS
BASE HW ELEVATION	= 698.82	FT
OVERTOPPING FREQUENCY	= 500+	YRS
OVERTOPPING DISCHARGE	= 4700	CFS
OVERTOPPING ELEVATION	= 724.0	FT

**PIPE HYDRAULIC DATA**  
48" RCP-III STA 37+25 -L-

DRAINAGE AREA	= 16.48	AC
DESIGN FREQUENCY	= 50	YRS
DESIGN DISCHARGE	= 60	CFS
DESIGN HW ELEVATION	= 719.87	FT
100 YEAR DISCHARGE	= 70	CFS
100 YEAR HW ELEVATION	= 720.32	FT
OVERTOPPING FREQUENCY	= 500+	YRS
OVERTOPPING DISCHARGE	= 185	CFS
OVERTOPPING ELEVATION	= 730.29	FT

INV IN = 715.52    INV OUT = 706.73



7/6/2015 10:51:16 AM P:\Projects\5516\5516.dwg -du- p1.15.dgn