

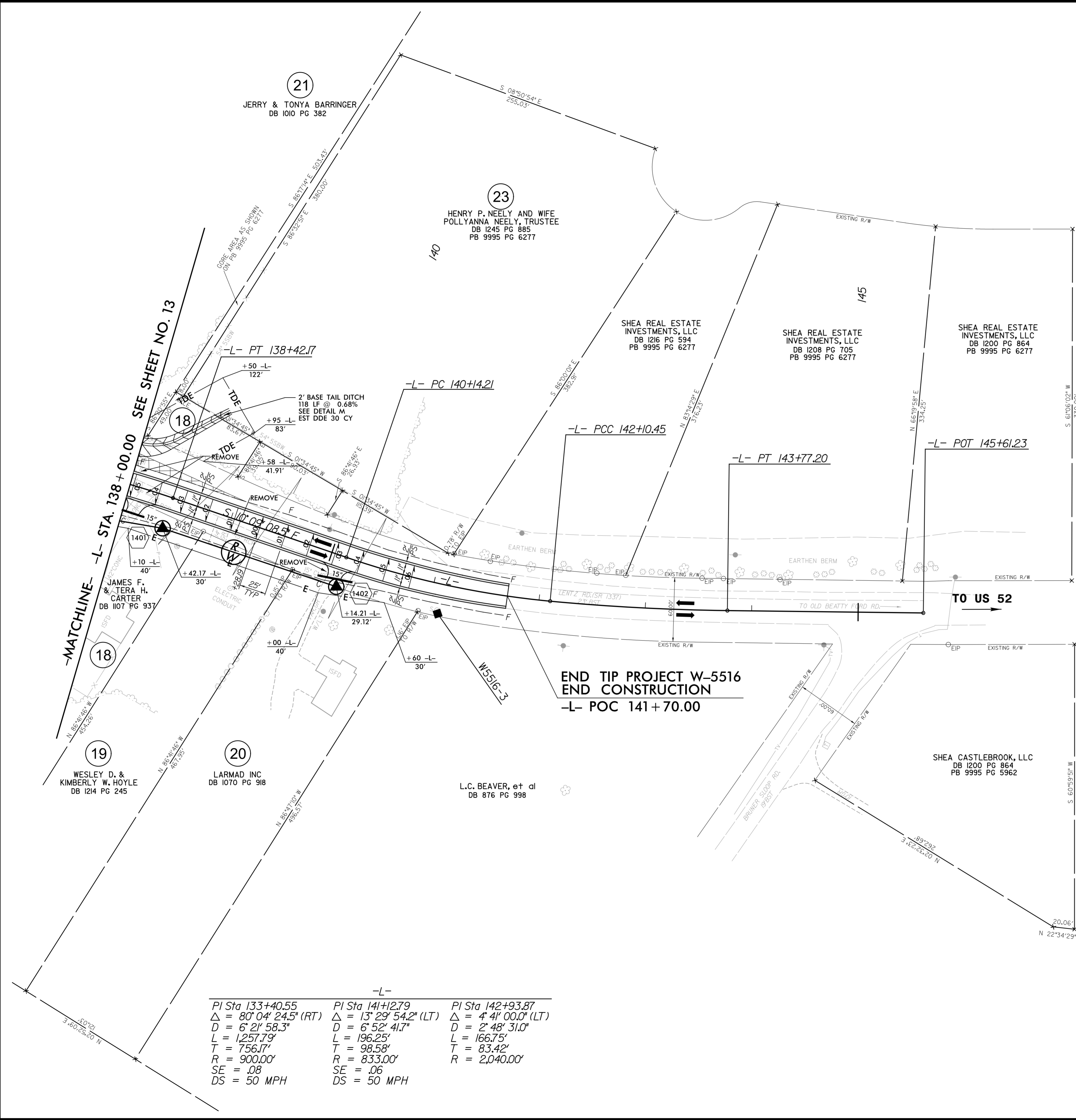
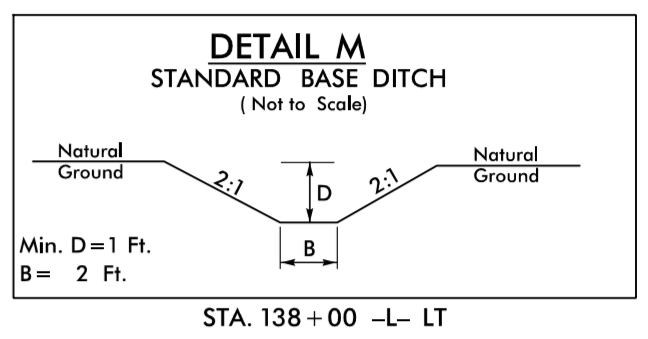
5/14/09



5121 Kingdom Way,
Suite 100
Raleigh, NC 27607
NC License No: F-0258

PROJECT REFERENCE NO. W-5516	SHEET NO. 14
RW SHEET NO.	
ROADWAY DESIGN ENGINEER DAVID C. WALLER SEAL 22606 NORTH CAROLINA PROFESSIONAL ENGINEER DAVID C. WALLER/28/2015	HYDRAULICS ENGINEER STACY H. BAILEY SEAL 24451 NORTH CAROLINA PROFESSIONAL ENGINEER STACY H. BAILEY/28/2015

NAD 83/NSRS 2007



-L-		
PI Sta 133+40.55	PI Sta 141+12.79	PI Sta 142+93.87
$\Delta = 80^{\circ}04'24.5''$ (RT)	$\Delta = 13^{\circ}29'54.2''$ (LT)	$\Delta = 4^{\circ}41'00.0''$ (LT)
D = 6' 21' 58.3"	D = 6' 52' 41.7"	D = 2' 48' 31.0"
L = 1257.79'	L = 196.25'	L = 166.75'
T = 756.17'	T = 98.58'	T = 83.42'
R = 900.00'	R = 833.00'	R = 2,040.00'
SE = .08	SE = .06	
DS = 50 MPH	DS = 50 MPH	

PAVEMENT REMOVAL

FOR -L- PROFILE, SEE SHEET 20

7/28/2015
ICA Engineering
C:\Users\jwall\Documents\Projects\W-5516-rdy-psh-14.dgn