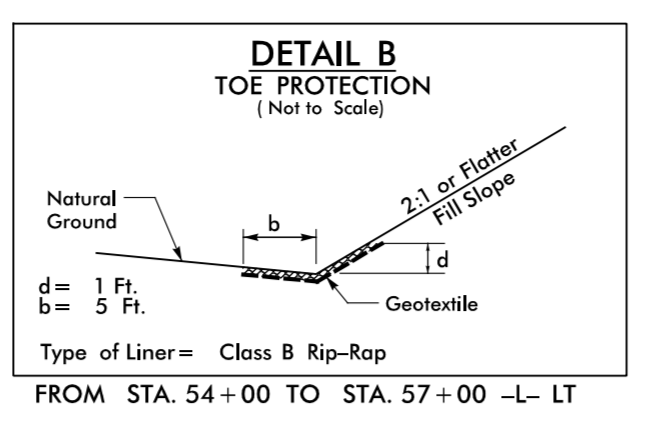
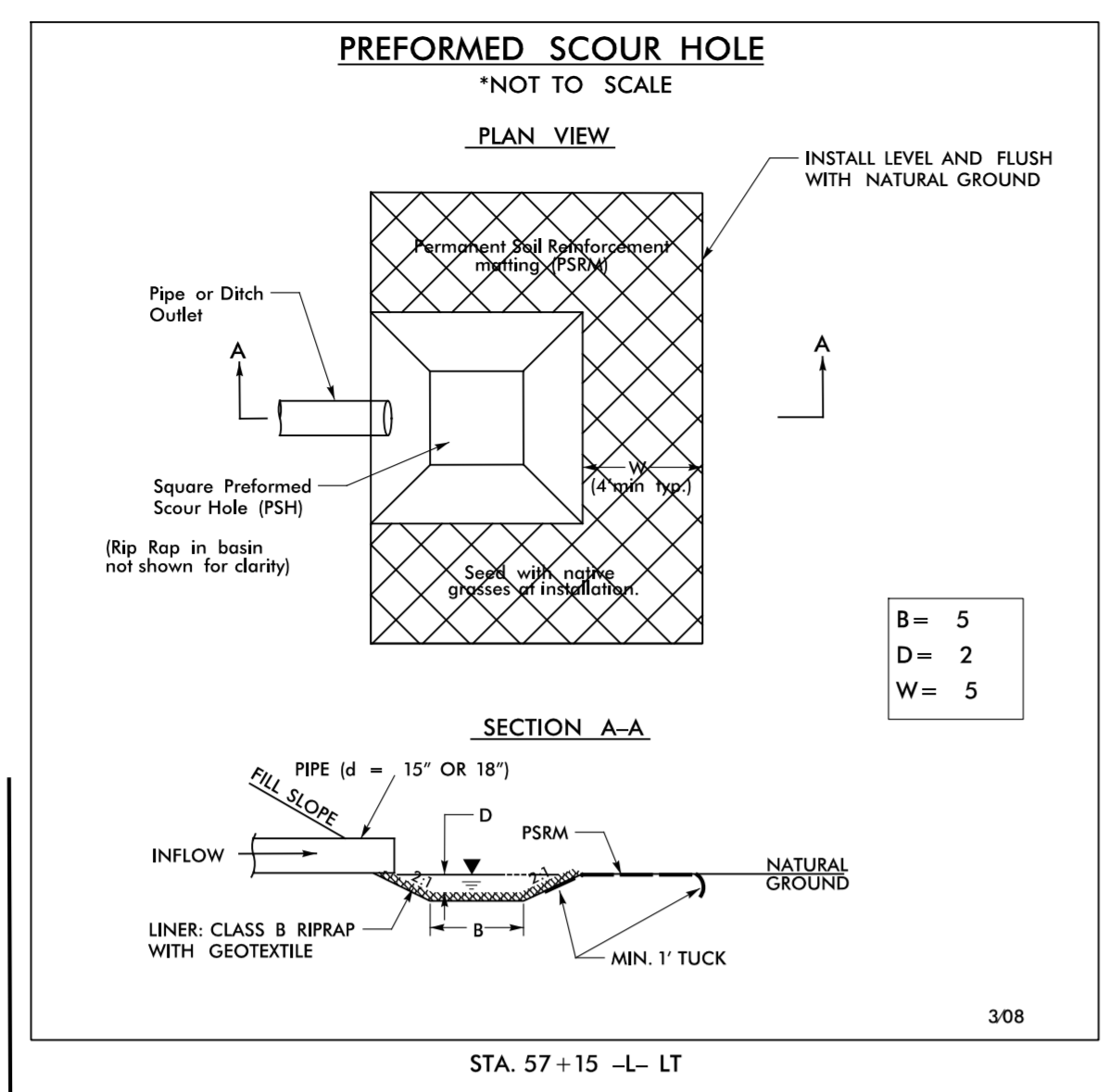


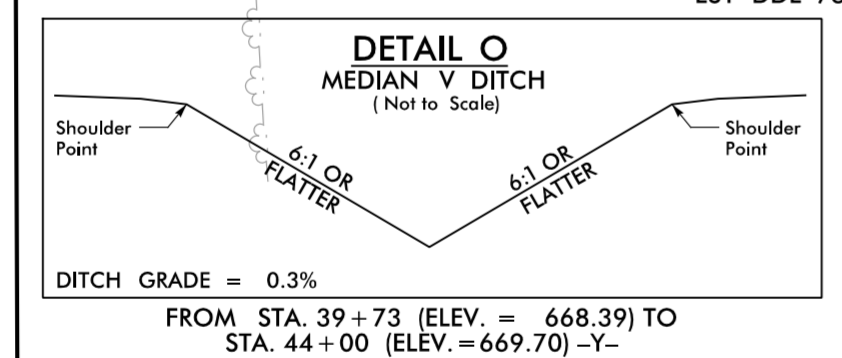
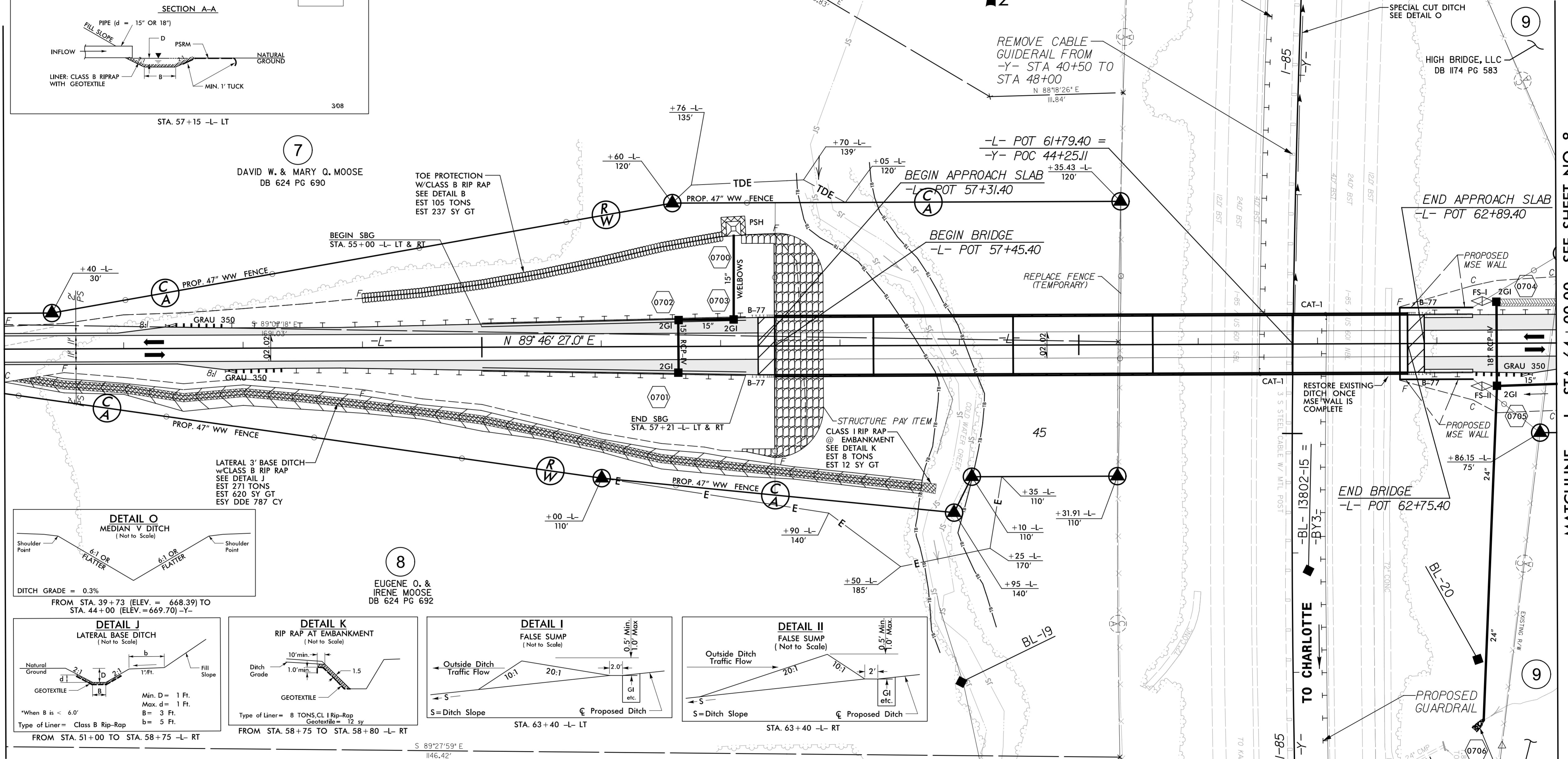
PROJECT REFERENCE NO. W-5516	SHEET NO. 7
RW SHEET NO.	
ROADWAY DESIGN ENGINEER DAVID C. WALKER PROFESSIONAL SEAL 22606	HYDRAULICS ENGINEER STACEY H. BAILEY PROFESSIONAL SEAL 24451
ICA Engineering 5121 Kingdom Way, Suite 100 Raleigh, NC 27607 NC License No: F-02558	



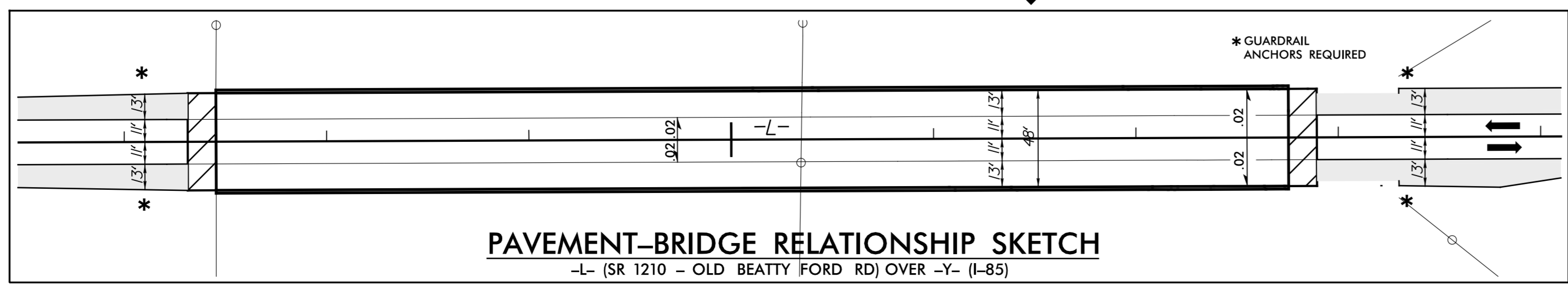
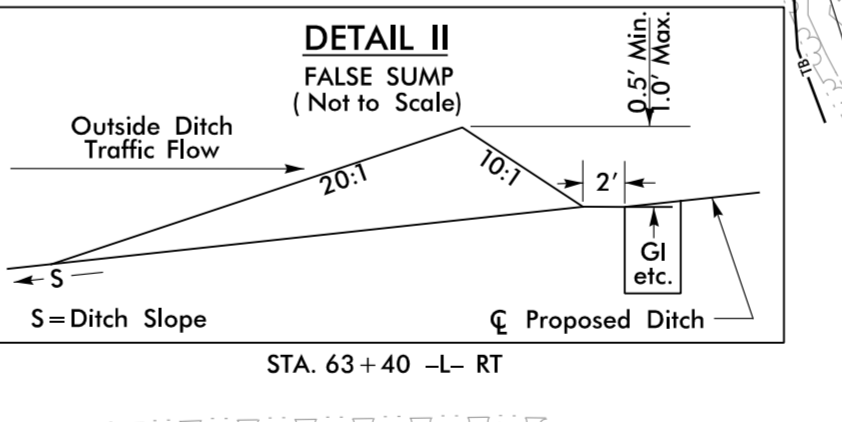
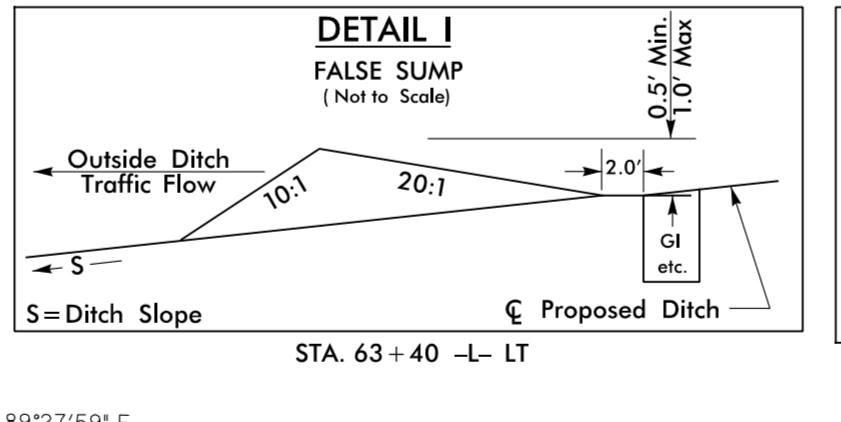
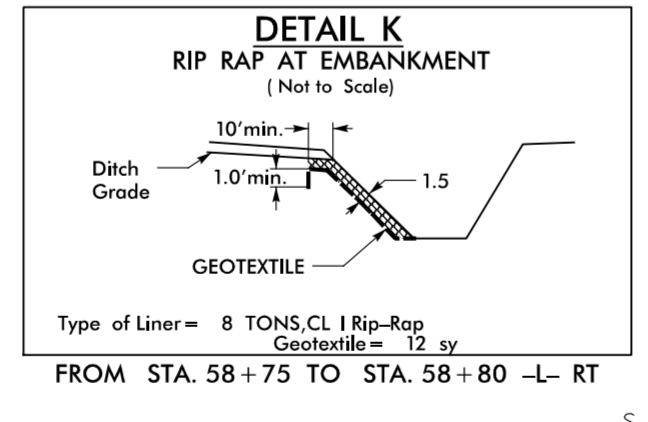
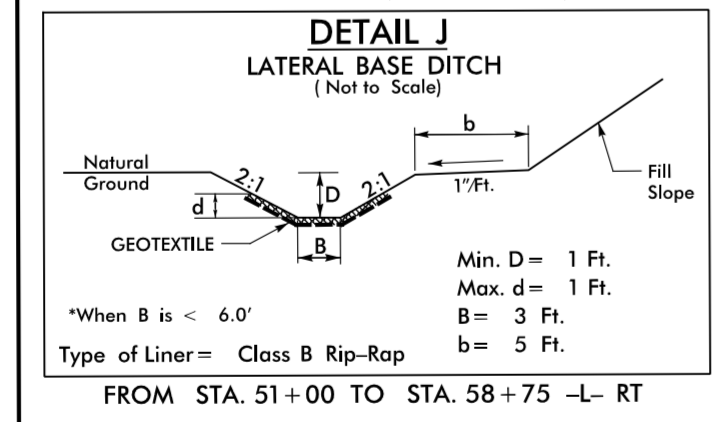
-Y-
PI Sta 44+63.14
Δ = 12' 28" 03.6" (LT)
D = 0' 29" 15.8"
L = 2556.26'
T = 1283.20'
R = 11,747.41'

LINDA SUE TADLOCK
WB 07E PG 142

-MATCHLINE- -L- STA. 51+00.00 SEE SHEET NO. 6



8
EUGENE O. & IRENE MOOSE
DB 624 PG 692



-MATCHLINE- -L- STA. 64+00.00 SEE SHEET NO. 8

FOR -L- PROFILE, SEE SHEET 16

5/14/09
6/25/2015
ICB - ENGINEERING - PROJECT: W-5516 - rdy.psh_07.dgn