

5/14/09

NAD 83/NRS 2007

LINDA SUE TADLOCK
WB 07E PG 142

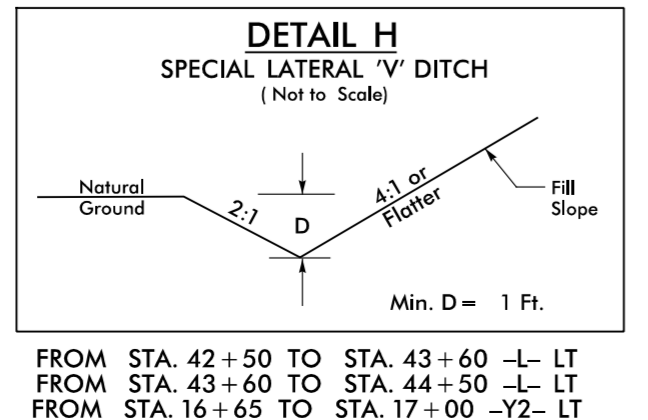
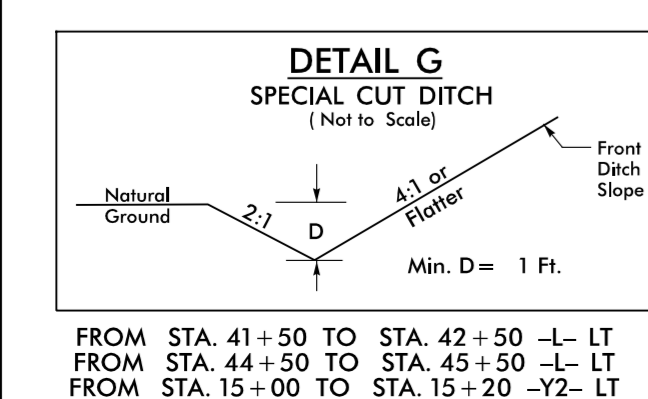
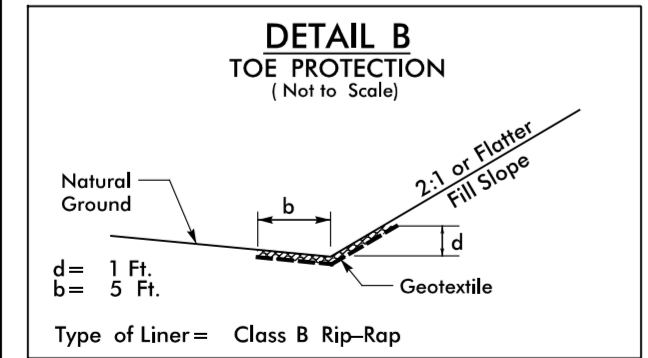
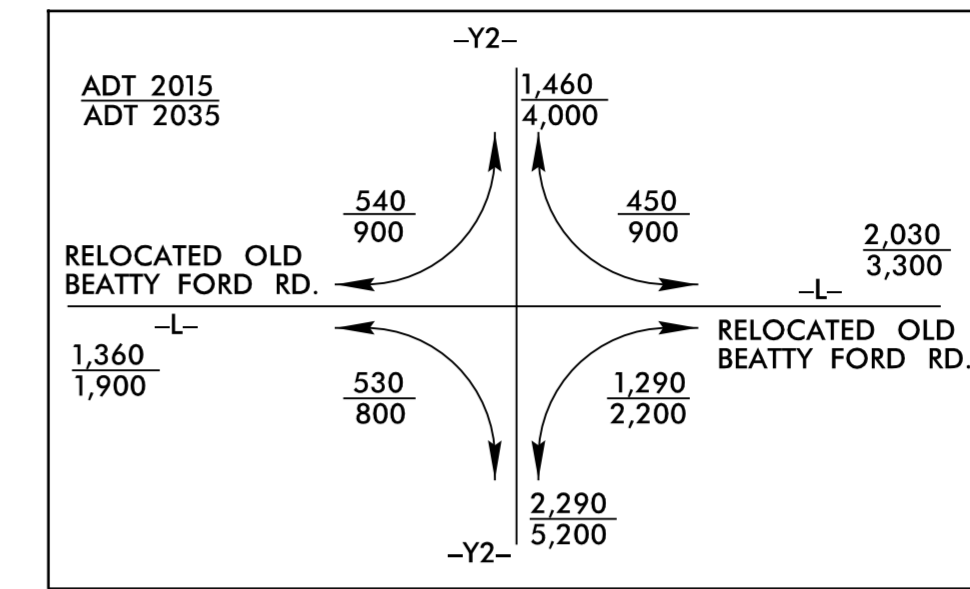
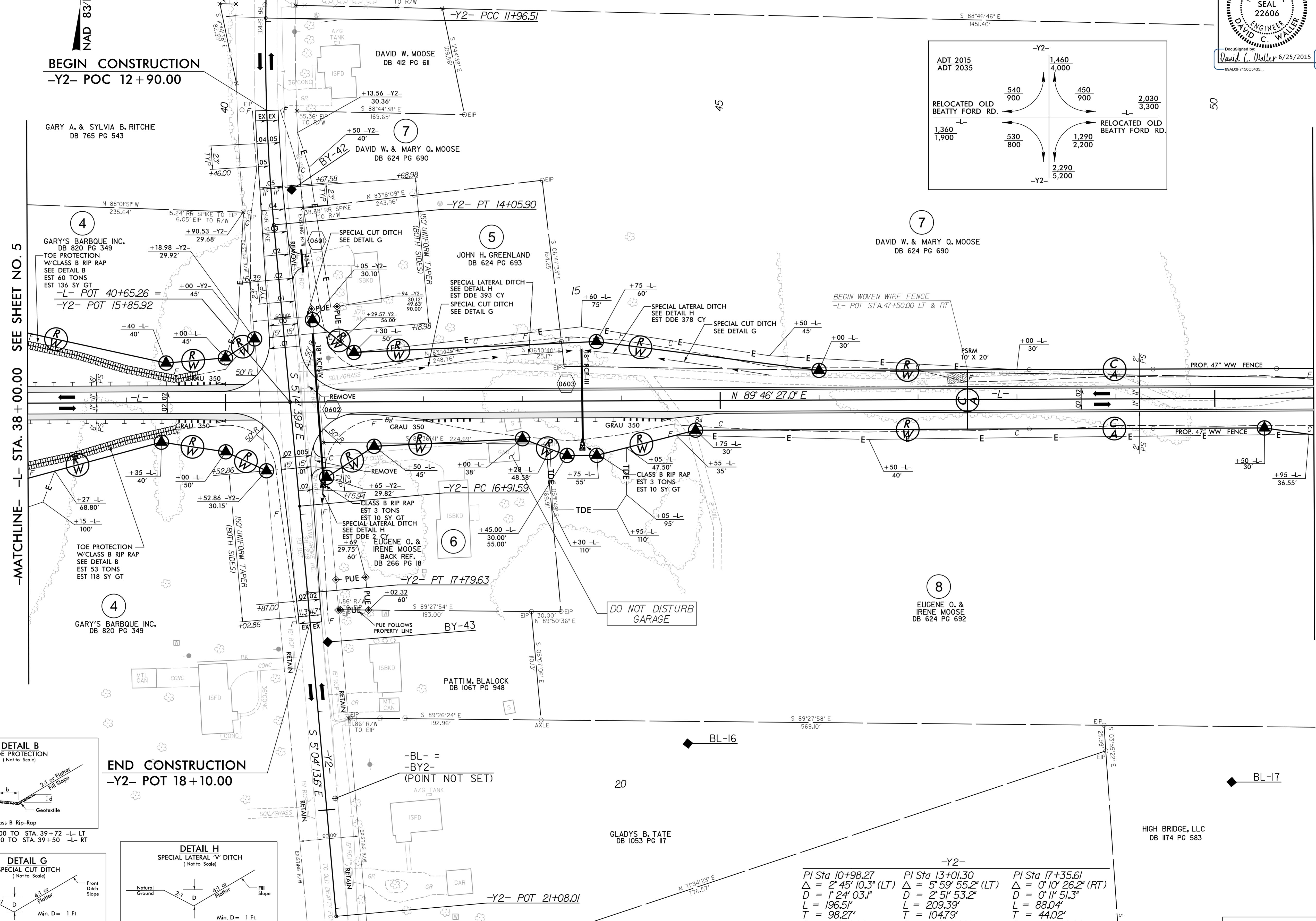
ICA Engineering
5121 Kingdom Way,
Suite 100
Raleigh, NC 27607
NC License No: F-0258

PROJECT REFERENCE NO. W-5516	SHEET NO. 6
RW SHEET NO.	
ROADWAY DESIGN ENGINEER DAVID C. WALLER PROFESSIONAL SEAL 22606 6/25/2015	HYDRAULICS ENGINEER STACEY H. BAILEY PROFESSIONAL SEAL 24451 6/25/2015

BEGIN CONSTRUCTION
-Y2- POC 12 + 90.00

-MATCHLINE- -L- STA. 38 + 00.00 SEE SHEET NO. 5

-MATCHLINE- -L- STA. 51 + 00.00 SEE SHEET NO. 7



Station	Delta	D	L	T	R	SE
PI Sta 10+98.27	Δ = 2' 45" 10.3" (LT)	D = 1' 24" 03.1"	L = 196.51'	T = 98.27'	R = 4,090.00'	
PI Sta 13+01.30	Δ = 5' 59" 55.2" (LT)	D = 2' 51" 53.2"	L = 209.39'	T = 104.79'	R = 2,000.00'	SE = .05
PI Sta 17+35.61	Δ = 0' 10" 26.2" (RT)	D = 0' 11" 51.3"	L = 88.04'	T = 44.02'	R = 29,000.00'	SE = NC

FOR -L- PROFILE, SEE SHEET 16
FOR -Y2- PROFILE, SEE SHEET 21

6/25/2015
ICA - ENGINEERING - PROJECT - W-5516 - rdy-ph_06.dgn