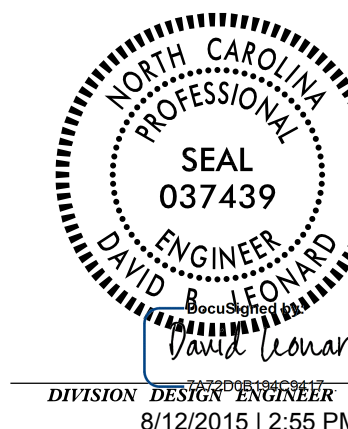


STATE OF NORTH CAROLINA  
DIVISION OF HIGHWAYS

# ALIGNMENT DESCRIPTIONS



Chain Y70 contains:  
1166 1167

Beginning chain Y70 description

Point 1166            N        152,592.4626 E        2,327,332.8475 Sta        10+00.00  
Course from 1166 to 1167 N 51°05' 26.65" E Dist 199.5659  
Point 1167            N        152,717.8078 E        2,327,488.1380 Sta        11+99.57

Ending chain Y70 description

Chain Y71 contains:  
1168 1169

Beginning chain Y71 description

Point 1168            N        152,717.8078 E        2,327,488.1380 Sta        10+00.00  
Course from 1168 to 1169 N 50°15' 23.59" E Dist 194.1519  
Point 1169            N        152,841.9390 E        2,327,637.4243 Sta        11+94.15

Ending chain Y71 description

Chain Y72 contains:  
1170 1171

Beginning chain Y72 description

Point 1170            N        153,759.6573 E        2,326,228.9308 Sta        10+00.00  
Course from 1170 to 1171 N 55°45' 46.76" E Dist 312.1393  
Point 1171            N        153,935.2724 E        2,326,486.9818 Sta        13+12.14

Ending chain Y72 description

Chain Y73 contains:  
1172 1173

Beginning chain Y73 description

Point 1172            N        153,931.1019 E        2,326,490.0902 Sta        10+00.00  
Course from 1172 to 1173 N 56°05' 20.69" E Dist 481.2533  
Point 1173            N        154,199.5946 E        2,326,889.4851 Sta        14+81.25

Ending chain Y73 description

Chain DRW1 contains:  
1051 1052

Beginning chain DRW1 description

Point 1051            N        126,668.5224 E        2,333,794.9777 Sta        10+00.00  
Course from 1051 to 1052 N 78°27' 31.25" E Dist 102.1464  
Point 1052            N        126,688.9593 E        2,333,895.0588 Sta        11+02.15

Ending chain DRW1 description

Chain DRW2 contains:  
1064 1065

Beginning chain DRW2 description

Point 1064            N        130,629.7180 E        2,333,160.4114 Sta        10+00.00  
Course from 1064 to 1065 N 85°08' 32.58" E Dist 176.8628  
Point 1065            N        130,644.6947 E        2,333,336.6389 Sta        11+76.86

Ending chain DRW2 description

Chain DRW3 contains:  
1069 1070

Beginning chain DRW3 description

Point 1069            N        131,667.8132 E        2,332,841.9188 Sta        10+00.00  
Course from 1069 to 1070 N 83°21' 35.59" E Dist 216.7897  
Point 1070            N        131,692.8811 E        2,333,057.2542 Sta        12+16.79

Ending chain DRW3 description

Chain DRW4 contains:  
1101 1102

Beginning chain DRW4 description

Point 1101            N        139,627.6684 E        2,333,385.9582 Sta        10+00.00  
Course from 1101 to 1102 S 85°17' 04.37" E Dist 126.9270  
Point 1102            N        139,617.2341 E        2,333,512.4555 Sta        11+26.93

Ending chain DRW4 description

Chain DRW5 contains:  
1135 1136

Beginning chain DRW5 description

Point 1135            N        145,196.4918 E        2,333,526.0710 Sta        10+00.00  
Course from 1135 to 1136 N 53°49' 33.73" E Dist 137.2307  
Point 1136            N        145,277.4907 E        2,333,636.8475 Sta        11+37.23

Ending chain DRW5 description

Chain DRW6 contains:  
1144 1145

Beginning chain DRW6 description

Point 1144            N        145,951.8018 E        2,333,079.5939 Sta        10+00.00  
Course from 1144 to 1145 N 50°01' 32.23" E Dist 177.2918  
Point 1145            N        146,065.7021 E        2,333,215.4583 Sta        11+77.29

Ending chain DRW6 description

Chain DRW7 contains:  
1180 1181

Beginning chain DRW7 description

Point 1180            N        148,479.2997 E        2,330,990.8590 Sta        10+00.00  
Course from 1180 to 1181 N 50°50' 08.30" E Dist 116.9792  
Point 1181            N        148,553.1776 E        2,331,081.5574 Sta        11+16.98

Ending chain DRW7 description