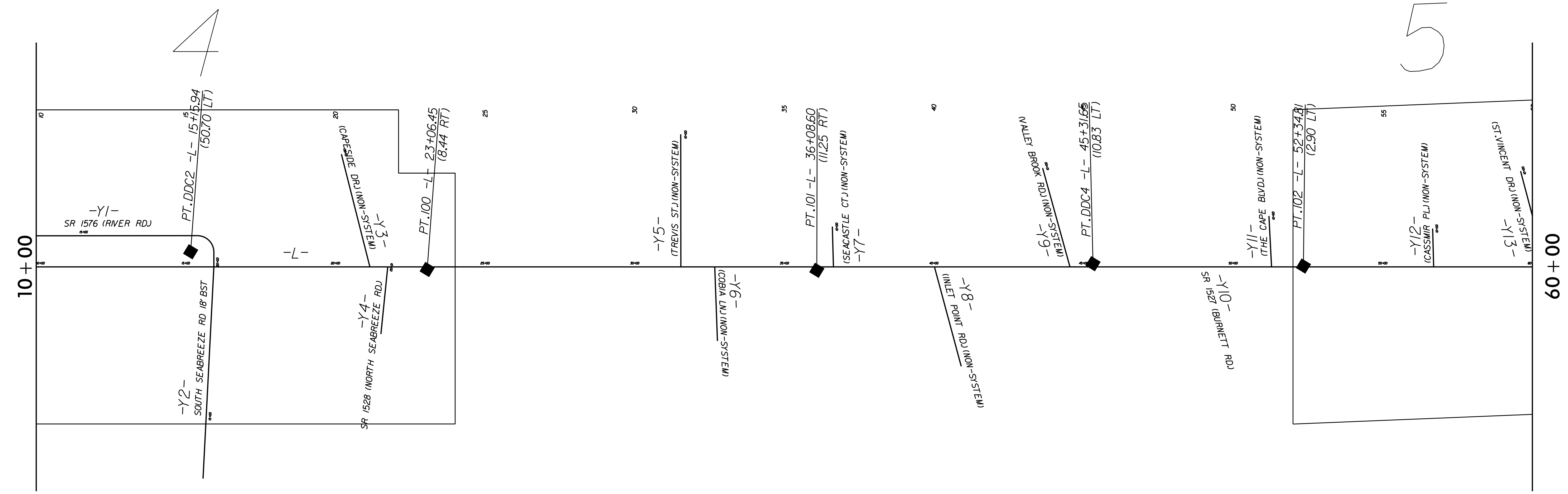


NAD 83/NSRS 2007

STATE OF NORTH CAROLINA  
DIVISION OF HIGHWAYS  
**SURVEY CONTROL SHEET**



**DATUM DESCRIPTION**  
 THE LOCALIZED COORDINATE SYSTEM DEVELOPED FOR THIS PROJECT IS BASED ON THE STATE PLANE COORDINATES ESTABLISHED BY NCGS FOR MONUMENT "ENNIS"  
 WITH NAD 83/NSRS 2007 STATE PLANE GRID COORDINATES OF  
 NORTHING: 136261.243sft(fft) EASTING: 2332811.338sft(fft)  
 ELEVATION: 49.278sft(fft)  
 THE AVERAGE COMBINED GRID FACTOR USED ON THIS PROJECT (GROUND TO GRID) IS: 1.000072815  
 THE N.C. LAMBERT GRID BEARING AND LOCALIZED HORIZONTAL GROUND DISTANCE FROM "ENNIS" TO -L- PNT Sta. 15+93.59 IS  
 N 02° 35' 42" W 19.90.7797'  
 ALL LINEAR DIMENSIONS ARE LOCALIZED HORIZONTAL DISTANCES  
 VERTICAL DATUM USED IS NAVD 88

CONTROL POINTS LIST (THIS SHEET):  
 PT 100 : N 11708125 : E 2333889.71 : Z 11.61  
 PT 101 : N 118345.34 : E 2334202.22 : Z 13.34  
 PT 102 : N 119928.23 : E 2334575.34 : Z 12.99  
 PT DDC2 : N 116327.50 : E 2333644.20 : Z 11.46  
 PT DDC4 : N 119247.14 : E 2334400.36 : Z 15.53

**NOT TO SCALE**

REVISIONS  
 03-AUG-2015 15:47 NEW HANDOVER W-5103-41867-1.1.1 US 421 Median Crossover Relet (use this file) \ROADWAY\Proj\Plan\_Sheets\W5103A-D03-RdJ-1C-1.dgn  
 8/17/99