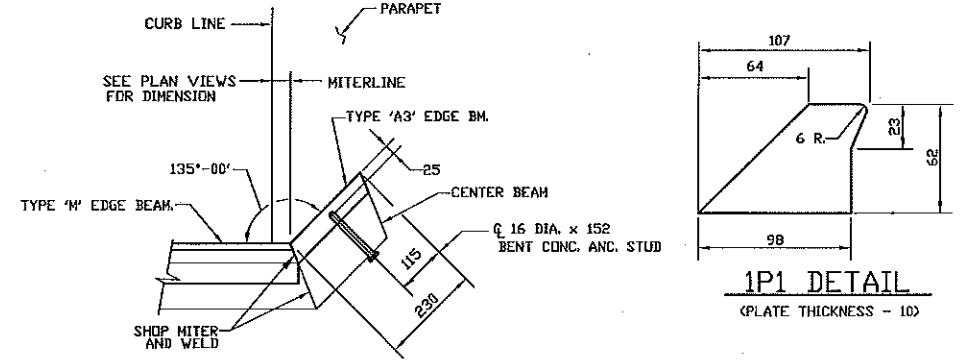


NOTES:  
 -SEE CURB DETAIL-2  
 -SLIDER PLATE ASSEMBLY SLI41933AB NOT SHOWN, SEE DWG. B-16226 FOR DETAILS

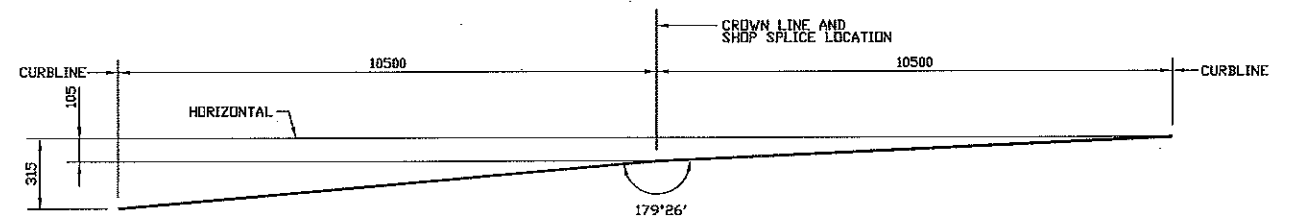
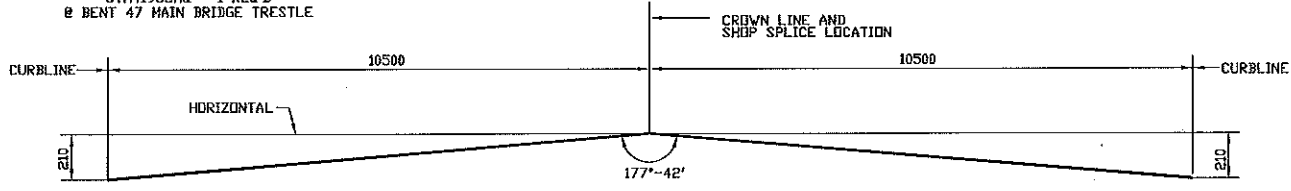
NOTES:  
 -JOINT PASSES BENEATH BARRIER  
 -SLIDER PLATE ASSEMBLY SLI41933AA NOT SHOWN, SEE DWG. B-16226 FOR DETAILS

NOTES:  
 -SEE CURB DETAIL-2  
 -SLIDER PLATE ASSEMBLY SLI41933AB NOT SHOWN, SEE DWG. B-16226 FOR DETAILS

**PLAN VIEW**  
 STM41933AP - 3 REQ'D  
 @ BENTS 35, 39, 43 MAIN BRIDGE TRESTLE  
 STM41933AQ - 1 REQ'D  
 @ BENT 47 MAIN BRIDGE TRESTLE



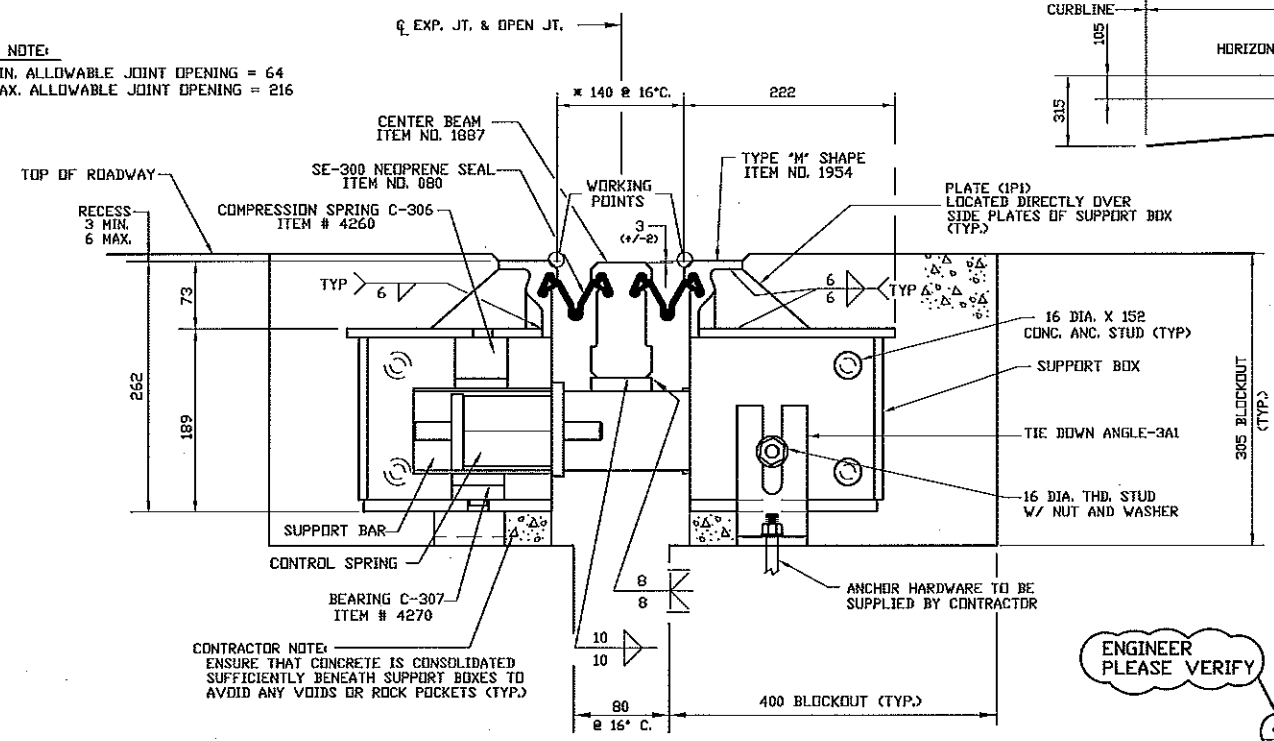
**IP1 DETAIL**  
 (PLATE THICKNESS = 10)



**GENERAL NOTES**

1. THE CONTRACTOR MUST VERIFY ALL DIMENSIONS PRIOR TO FABRICATION TO ENSURE ACCURACY OF THE EXPANSION JOINT.
2. ALL MATERIALS AND FABRICATION SHALL BE IN ACCORDANCE WITH THE 1995 STATE OF NORTH CAROLINA D.O.T. STANDARD SPECIFICATIONS FOR ROADS AND STRUCTURES AS MODIFIED BY THE CONTRACT SPECIAL PROVISIONS, EXCEPT AS NOTED HEREIN.
3. WELDING SHALL COMPLY WITH THE ANSI/AWS/AASHTO BRIDGE WELDING CODE D1.5 AS MODIFIED BY ANY INTERIM SPECIFICATIONS AND THE CONTRACT SPECIAL PROVISIONS.
4. ALL STEEL SURFACES, EXCEPT STAINLESS STEEL, SHALL BE SSPC SP6 BLAST CLEANED PRIOR TO PAINTING. ALL STEEL SURFACES (INCLUDING NEOPRENE SEAL CAVITIES), EXCEPT FOR STAINLESS STEEL SHALL BE SHOP PAINTED WITH A ZINC RICH PAINT COMPLYING TO SECTION 1080-9. THE PAINT SHALL COMPLY TO TT-P-641 AND SHALL HAVE BEEN TESTED AND APPROVED PRIOR TO ITS USE. THE PAINT SHALL BE APPLIED AT A RATE OF 100 MICRONS (4 MILS) D.F.T.
5. THE EXPANSION JOINT OPENING SHALL BE PRESET BY THE MANUFACTURER TO THE DIMENSION SHOWN AT 16°C. PRIOR TO SHIPPING, FINAL ADJUSTMENTS SHALL BE MADE IN THE FIELD, BY THE CONTRACTOR AS DIRECTED BY THE E.I.C., PRIOR TO CONCRETE PLACEMENT.
6. THE NEOPRENE SEALS SHALL BE SHOP INSTALLED BY THE MANUFACTURER USING INSTALLATION TOOLS AND BONDED IN PLACE WITH PRIMA-LUB ADHESIVE. THE ADHESIVE SHALL BE APPLIED TO ALL NEOPRENE / STEEL CONTACT SURFACES. THE NEOPRENE SEAL SHALL BE SUPPLIED IN ONE CONTINUOUS PIECE, FACTORY SPLICES ARE PERMITTED.
7. IN HOUSE STATE INSPECTION IS REQUIRED.
8. ALL DIMENSIONS ARE IN MILLIMETERS UNLESS NOTED OTHERWISE.

\* NOTE:  
 MIN. ALLOWABLE JOINT OPENING = 64  
 MAX. ALLOWABLE JOINT OPENING = 216



**TEMPERATURE ADJUSTMENT**

THE CHANGE PER 6°C IS MEASURED PERPENDICULAR TO THE JOINT FOR BOTH NORMAL AND SKEWED JOINTS.

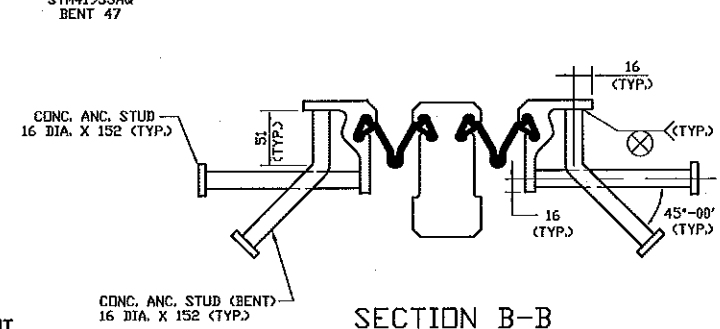
DIMENSIONS SPANNING THE OPEN JOINT WILL DECREASE OR INCREASE FOR EVERY 6°C RISE OR FALL RESPECTIVELY.

- 9 MILLIMETERS AT BENTS 35, 39 & 43 (STM41933AP)
- 9 MILLIMETERS AT BENT 47 (STM41933AQ)
- 9 MILLIMETERS AT BENTS 51, 55 & 59 (STM41933AR)

ENGINEER PLEASE VERIFY

NOTE:  
 CONTRACTOR SHALL COORDINATE REBAR DETAILS AT EXP. JOINT BLOCKOUT TO AVOID INTERFERENCE WITH EXP. JOINT (TYP.)

**SECTION B-B**



NOTE:  
 FOR INFORMATION NOT SHOWN SEE SECTION A-A.

SHEET NUMBER: 2e1

STATE: NORTH CAROLINA  
 COUNTY: CRAVEN  
 F.A. PROJECT NO.: NHF-17(10)  
 PROJECT NO.: B.1170904 (B-2531B)  
 WBA PRODUCT NO.: STM41933AP, AQ & AR  
 JOINT TYPE: STRIP SEAL MODULAR - STM600

NO.	DESCRIPTION	DATE
4.		
3.		
2.		
1.		

REVISIONS

THIS DRAWING AND THE DESIGN, DETAILS AND/OR ENGINEERING INFORMATION CONTAINED HEREON ARE THE PROPRIETARY PROPERTY OF WATSON BOWMAN ACME AND ARE NOT TO BE REPRODUCED OR USED, EXCEPT FOR THE PURPOSES FOR WHICH THEY HAVE BEEN FURNISHED. ALL RIGHTS OF DESIGN AND INVENTION ARE HEREBY RESERVED.

**Watson Bowman Acme**

85 PREVIEW DRIVE AMHERST, N.Y. 14228 TEL (716) 691-7566 FAX (716) 691-9239

A DIVISION OF **HARRIS SPECIALTY CHEMICALS, INC.**

PROJECT: **NEUSE RIVER BRIDGE**

DESIGNED BY: MN	DATE: 8/21/96
CHECKED BY: RH	DATE: 8/30/96
SCALE: N.T.S.	WBA JOB NO.: 41933
SHEET NO.: 1 OF 4	DRAWING NO.: B-16454

I:\DWG\1990\B16454\B16454.DWG, 7/10/2014 8:13:33 AM