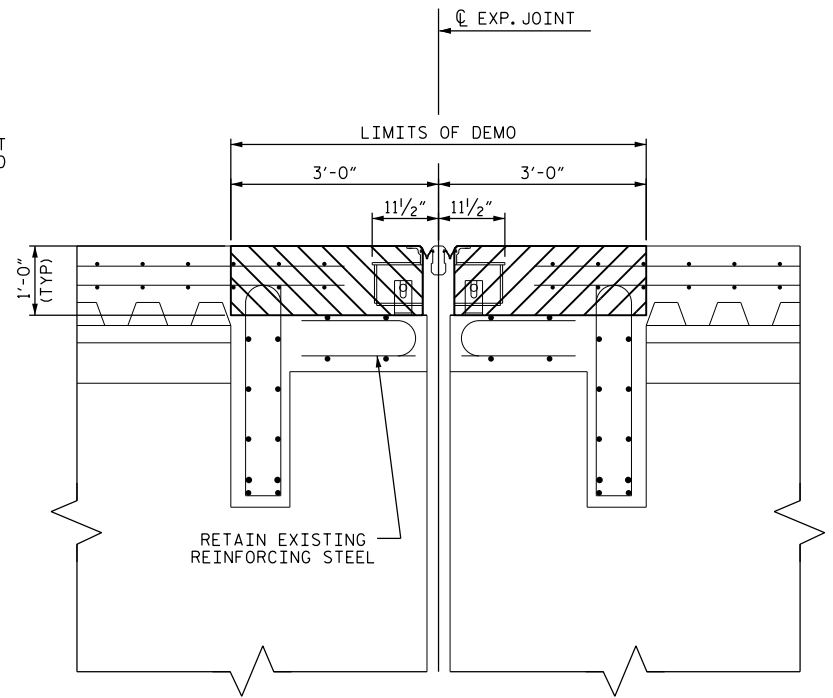
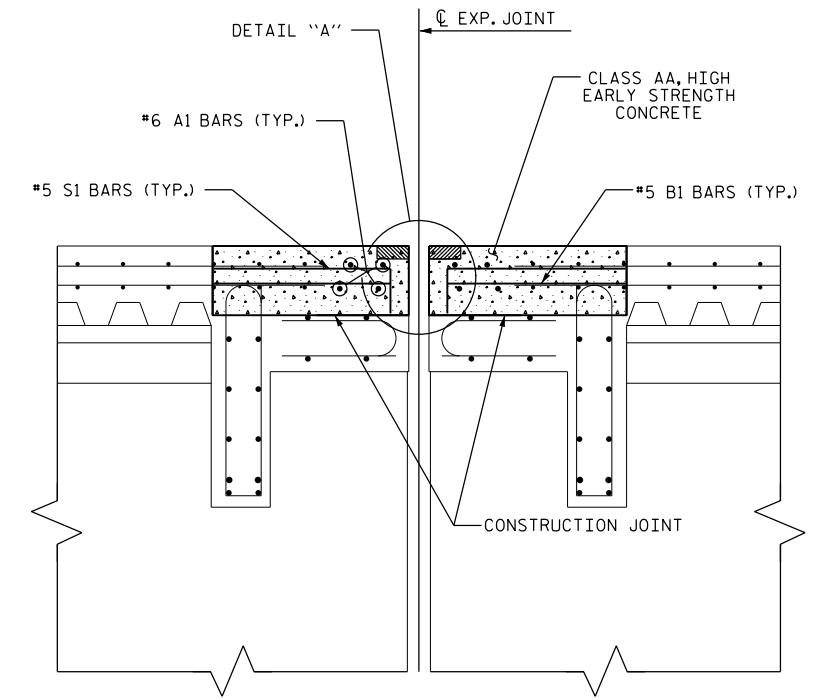


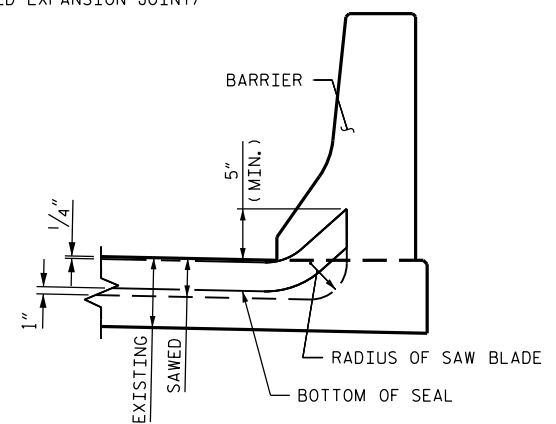
EXPANSION JOINT
(EXISTING JOINT)



EXPANSION JOINT
(EXISTING JOINT DEMOLITION)



EXPANSION JOINT
(PROPOSED EXPANSION JOINT)



SECTION E-E

JOINT SEAL DETAILS AT BARRIER

(INTERIOR AND EXTERIOR BARRIERS ARE SIMILAR)

PROJECT NO. BP-5500FF
CRAVEN COUNTY
BRIDGE NO. 231

NOTES

EXISTING DIMENSIONS ARE FROM THE BEST INFORMATION AVAILABLE. THE CONTRACTOR SHALL FIELD VERIFY THE INFORMATION SHOWN ON THE PLANS AND NOTIFY THE ENGINEER IF ACTUAL DIMENSIONS OR CONDITIONS DIFFER.

THE ENGINEER WILL REVIEW EXISTING DECK CONDITIONS. THE CONTRACTOR SHALL REMOVE UNSOUND CONCRETE IN THE DECK, OR AS DIRECTED BY THE ENGINEER.

DECK CONCRETE SHALL BE REPLACED WITH CLASS AA HIGH EARLY STRENGTH PORTLAND CEMENT CONCRETE ACCORDING TO SECTION 1000-5 OF THE STANDARD SPECIFICATIONS.

REMOVE BRIDGE DECK CONCRETE TO THE EXTENT NECESSARY TO REMOVE EXISTING JOINT. INTRODUCE A PARTIAL DEPTH SAWCUT NOT EXCEEDING 1" IN DEPTH, FOLLOWED BY CONCRETE REMOVAL WITHOUT DAMAGE TO EXISTING REINFORCING STEEL AND EXISTING GIRDERS.

RETAIN BRIDGE DECK REINFORCING STEEL, STRAIGHTEN, REPAIR, OR REPLACE REINFORCING STEEL, AS NECESSARY.

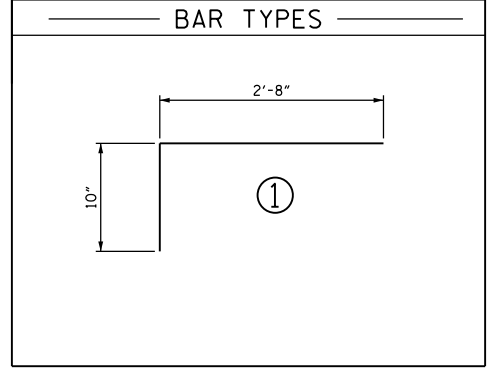
THE CONTRACTOR SHALL CONSTRUCT THE OPENING FOR THE SYNTHETIC RUBBER EXPANSION JOINT SEAL BASED UPON THE MANUFACTURER'S RECOMMENDATIONS. FOR ALL TEMPERATURE RANGES, THE JOINT WIDTH MAY NOT BE LESS THAN 1" OR GREATER THAN 3/2". THE CONTRACTOR SHALL INSTALL JOINT SEAL ACCORDING TO THE MANUFACTURER'S RECOMMENDATIONS.

REMOVE EXISTING MODULAR EXPANSION JOINT IN ENTIRETY WITH THE EXCEPTION OF THE HORIZONTAL LEG OF "TIE DOWN ANGLE" AND ANCHOR. REMOVE THE VERTICAL LEG OF "TIE DOWN ANGLE" AND ALL OTHER JOINT HARDWARE.

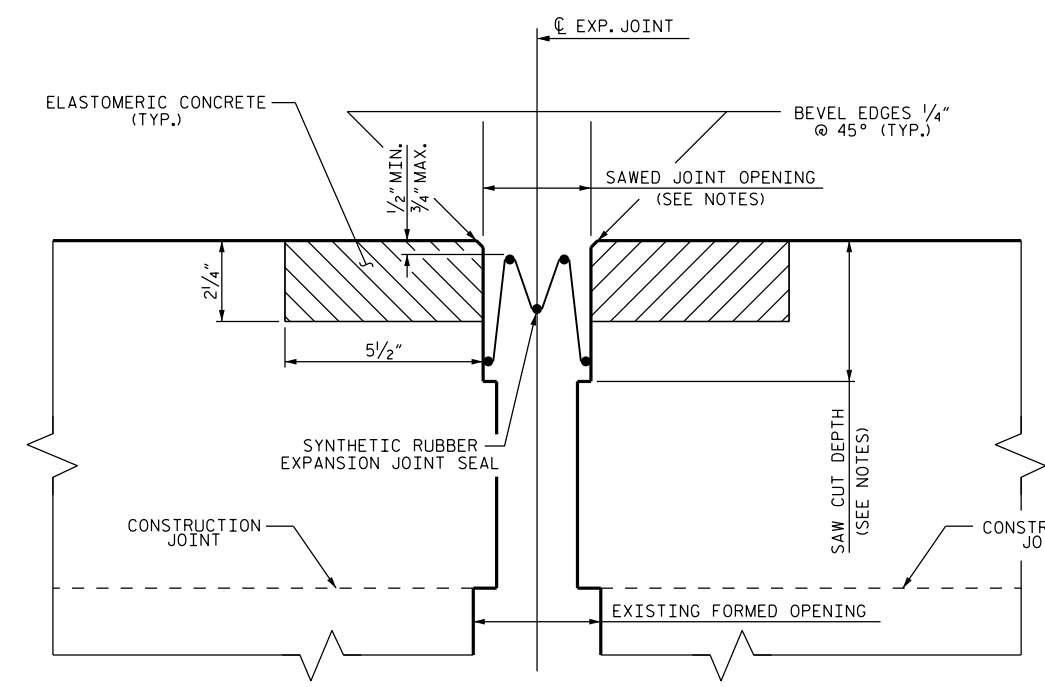
PROPOSED A1, B1 AND S1 BARS SHALL BE SPACED SO AS TO MATCH SPACING OF EXISTING "A" AND "B" BARS.

THE REPAIR CONCRETE SHALL ATTAIN A STRENGTH OF 3,000 PSI PRIOR TO THE INTRODUCTION OF TRAFFIC.

BILL OF MATERIAL					
BAR	NO.	SIZE	TYPE	LENGTH	WEIGHT
* A1	32	#6	STR	18'-2"	874
* B1	60	#5	STR	2'-8"	167
* S1	70	#5	1	3'-6"	256
* EPOXY COATED REINFORCING STEEL = 1,297 LBS					
CLASS AA CONCRETE = 15 C.Y.					
BRIDGE JOINT DEMOLITION = 62 S.F.					



NOTE: MIN. SPLICE LENGTH OF 3'-0" IS REQUIRED BETWEEN STAGES FOR A1 BARS.



DETAIL A

(REINFORCING STEEL NOT SHOWN FOR CLARITY)

DocuSigned by:
William M. Clarke
1EB20097EAAF437...



6/10/2015

DRAWN BY: M.A.LEE DATE: 10/2014
CHECKED BY: W.M.CLARKE DATE: 10/2014

REVISIONS						SHEET NO.	
NO.	BY:	DATE:	NO.	BY:	DATE:	S-23	
1			3			TOTAL SHEETS	
2			4			23	