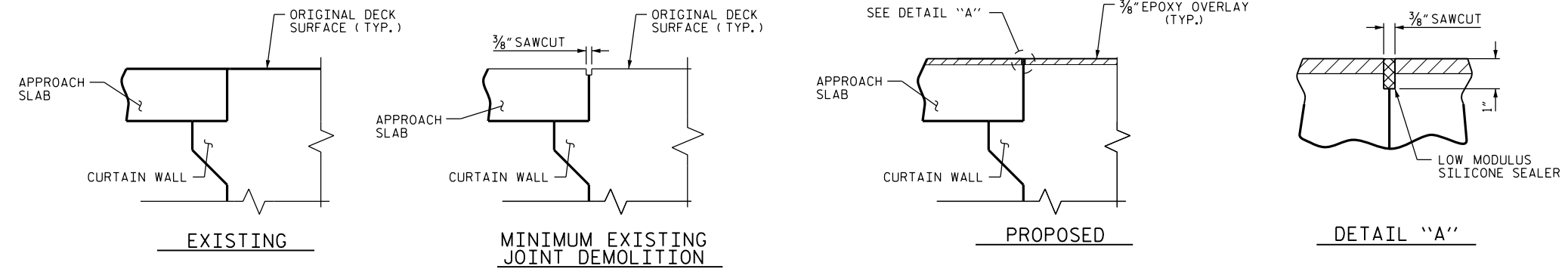
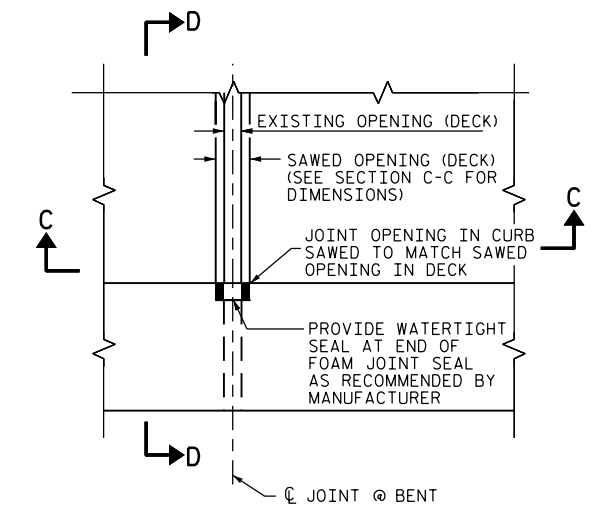


SECTION A-A

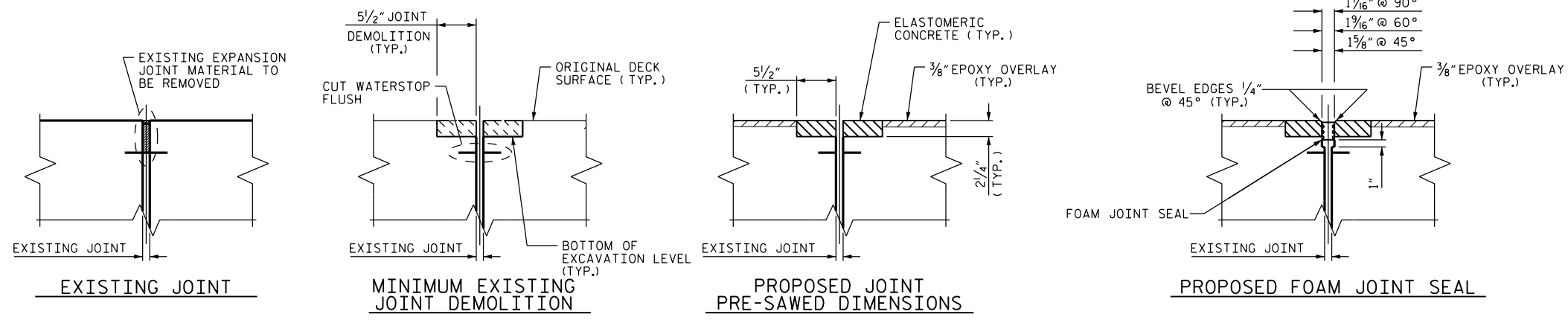
NOTES:
 FOR FOAM JOINT SEALS SEE SPECIAL PROVISIONS.
 THE INSTALLED FOAM JOINT SEAL SHALL BE WATER TIGHT.
 NOMINAL UNCOMPRESSED SEAL WIDTH OF FOAM JOINT SEAL SHALL BE 2".
 THE CONTRACTOR WILL NOT BE PERMITTED TO FORM THE JOINTS IN LIEU OF SAWING THE JOINT.



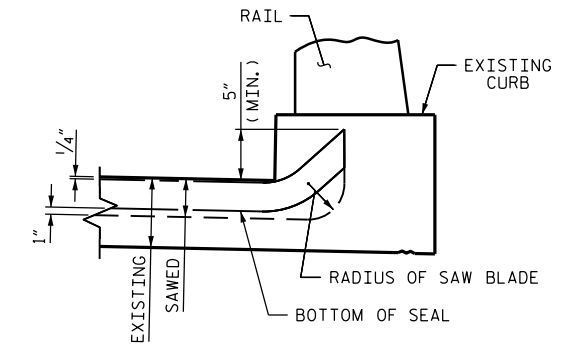
SECTION B-B



PLAN



SECTION C-C



SECTION D-D

JOINT SEAL DETAILS AT BENT

IF THE EMBEDDED PORTION OF THE EXISTING PLASTIC WATERSTOP IS EXPOSED DURING REMOVAL OF UNSOUND CONCRETE OR IF UNSOUND CONCRETE IS REMOVED WITHIN 2" OF THE WATERSTOP, THE ENTIRE WATERSTOP SHALL BE REMOVED

REMOVAL OF CONCRETE AT THE EXISTING JOINT SHALL RESULT IN THE BOTTOM OF THE EXCAVATION BEING REASONABLY FLAT AND LEVEL, TO PROVIDE SUFFICIENT SUBSTRATE FOR PLACEMENT AND SUPPORT OF ELASTOMERIC OR REPAIR CONCRETE.

PROJECT NO. BP-5500FF
CRAVEN COUNTY
 BRIDGE NO. 84

LOCATION	JOINT LENGTH	JOINT DEMO.	LOCATION	JOINT LENGTH	JOINT DEMO.	LOCATION	JOINT LENGTH	JOINT DEMO.	LOCATION	JOINT LENGTH	JOINT DEMO.	LOCATION	JOINT LENGTH	JOINT DEMO.
BENT 1	51'-8 3/4"	47.41 SF	BENT 11	51'-8 3/4"	47.41 SF	BENT 21	51'-8 3/4"	47.41 SF	BENT 31	59'-7 3/16"	54.63 SF	BENT 41	63'-8 1/8"	58.36 SF
BENT 2	51'-8 3/4"	47.41 SF	BENT 12	51'-8 3/4"	47.41 SF	BENT 22	51'-8 3/4"	47.41 SF	BENT 32	59'-7 3/16"	54.63 SF	BENT 42	65'-4 3/16"	59.90 SF
BENT 3	51'-8 3/4"	47.41 SF	BENT 13	51'-8 3/4"	47.41 SF	BENT 23	53'-7 7/16"	48.86 SF	BENT 33	59'-7 3/16"	54.63 SF	BENT 43	67'-0 1/4"	61.43 SF
BENT 4	51'-8 3/4"	47.41 SF	BENT 14	51'-8 3/4"	47.41 SF	BENT 24	54'-10 1/2"	50.30 SF	BENT 34	59'-7 3/16"	54.63 SF	BENT 44	68'-8 5/16"	62.96 SF
BENT 5	51'-8 3/4"	47.41 SF	BENT 15	51'-8 3/4"	47.41 SF	BENT 25	56'-5 1/16"	51.74 SF	BENT 35	59'-7 3/16"	54.63 SF	BENT 45	70'-6"	64.64 SF
BENT 6	51'-8 3/4"	47.41 SF	BENT 16	51'-8 3/4"	47.41 SF	BENT 26	58'-0 5/16"	53.19 SF	BENT 36	59'-7 3/16"	54.63 SF	BENT 46	72'-0 5/16"	66.06 SF
BENT 7	51'-8 3/4"	47.41 SF	BENT 17	51'-8 3/4"	47.41 SF	BENT 27	59'-7 3/16"	54.63 SF	BENT 37	59'-7 3/16"	54.63 SF	BENT 47	73'-7 5/8"	67.49 SF
BENT 8	51'-8 3/4"	47.41 SF	BENT 18	51'-8 3/4"	47.41 SF	BENT 28	59'-7 3/16"	54.63 SF	BENT 38	59'-7 15/16"	54.69 SF	BENT 48	75'-3"	68.97 SF
BENT 9	51'-8 3/4"	47.41 SF	BENT 19	51'-8 3/4"	47.41 SF	BENT 29	59'-7 3/16"	54.63 SF	BENT 39	60'-7 9/16"	55.57 SF	BENT 49	77'-2 1/16"	70.74 SF
BENT 10	51'-8 3/4"	47.41 SF	BENT 20	51'-8 3/4"	47.41 SF	BENT 30	59'-7 3/16"	54.63 SF	BENT 40	62'-0 7/8"	56.84 SF	BENT 50	79'-8 3/16"	73.04 SF
									BENT 51	83'-0 1/16"	76.13 SF			
									BENT 52	87'-6 3/16"	80.22 SF			

DRAWN BY : M.A.LEE DATE : 03/2015
 CHECKED BY : W.M. CLARKE DATE : 03/2015

6/10/2015



STATE OF NORTH CAROLINA
 DEPARTMENT OF TRANSPORTATION
 RALEIGH

JOINT DETAILS

REVISIONS						SHEET NO.
NO.	BY:	DATE:	NO.	BY:	DATE:	S-12
1			3			TOTAL SHEETS
2			4			23