

**This electronic collection of documents is provided
for the convenience of the user
and is Not a Certified Document –**

**The documents contained herein were originally issued
and sealed by the individuals whose names and license
numbers appear on each page, on the dates appearing
with their signature on that page.**

**This file or an individual page
shall not be considered a certified document.**

09/08/99

T.I.P. NO.	SHEET NO.
R-2915A	UO-1

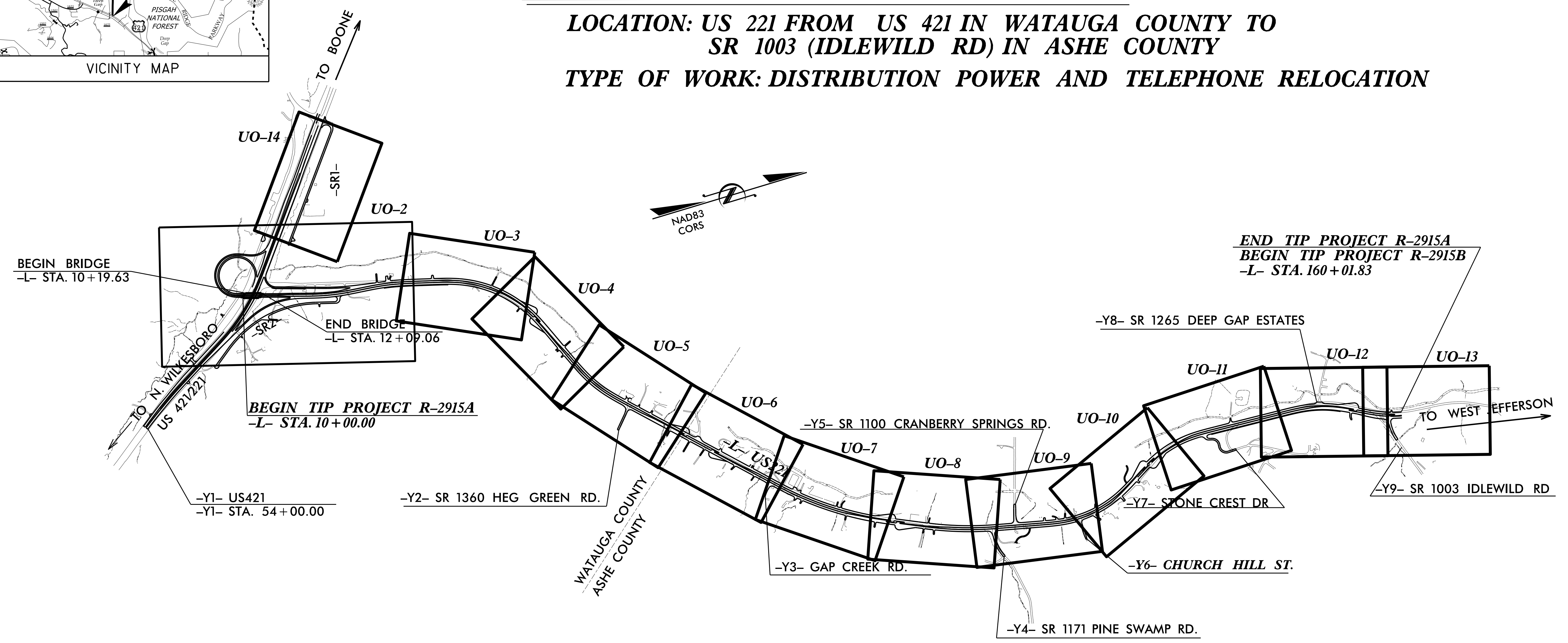
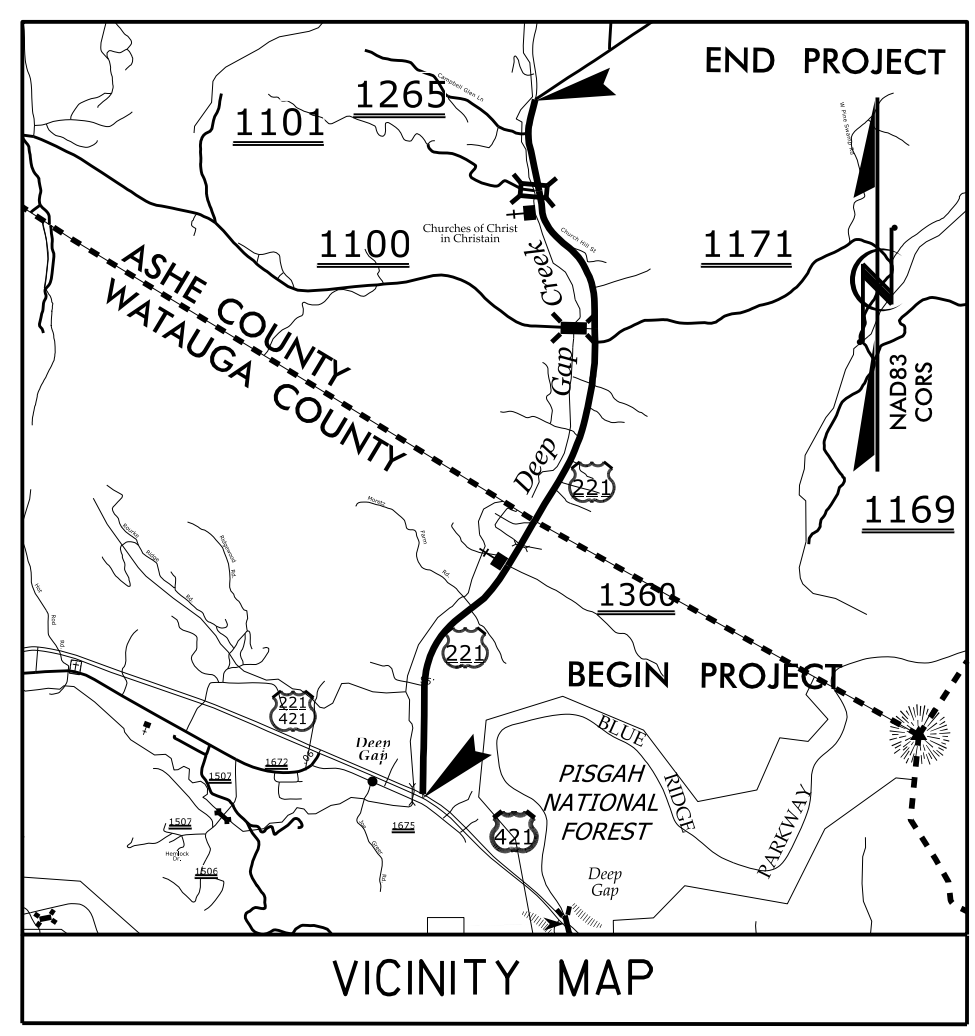
STATE OF NORTH CAROLINA
DIVISION OF HIGHWAYS

**UTILITIES BY OTHERS PLANS
WATAUGA & ASHE COUNTIES**

LOCATION: US 221 FROM US 421 IN WATAUGA COUNTY TO
SR 1003 (IDLEWILD RD) IN ASHE COUNTY

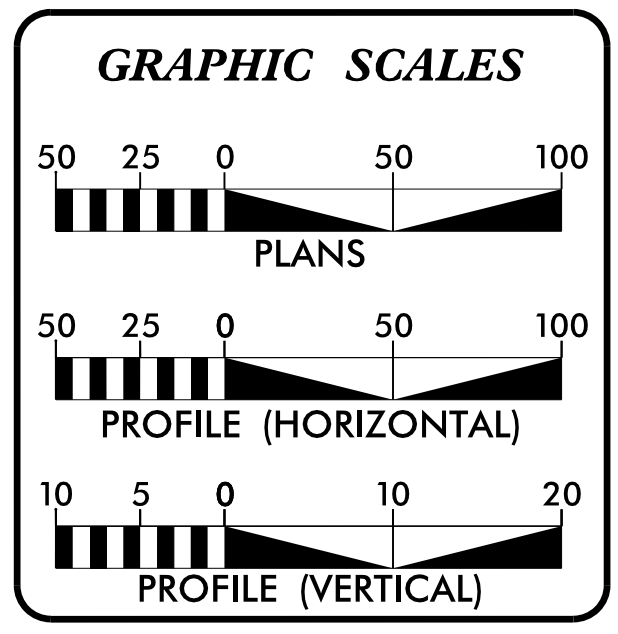
TYPE OF WORK: DISTRIBUTION POWER AND TELEPHONE RELOCATION

TIP PROJECT: R-2915A



NOTE: SEE UTILITY CONSTRUCTION PLANS FOR GAS RELOCATION

M A Engineering Consultants, Inc.
598 East Chatham Street - Suite 137
Cary, NC 27511
Phone: 919.297.0220 Fax: 919.297.0221
NC License: F-0160



SHEET NO.	DESCRIPTION
UO-1	TITLE SHEET
UO-2 THRU UO-14	PLAN SHEETS

UTILITY OWNERS ON PROJECT

(1) POWER - BLUE RIDGE EMC
(2) TELEPHONE - AT&T
(3) TELEPHONE - SKYLINE TELEPHONE

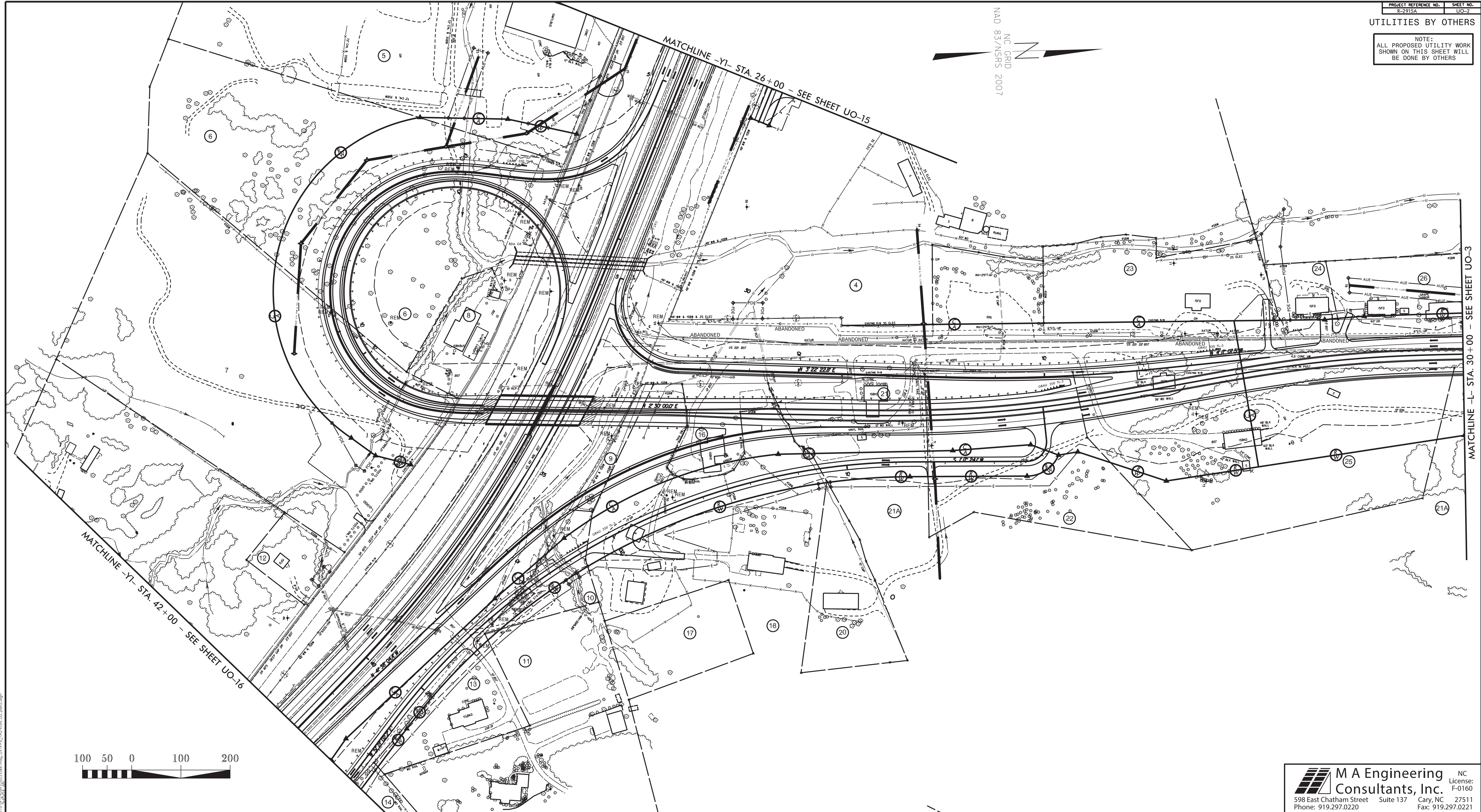
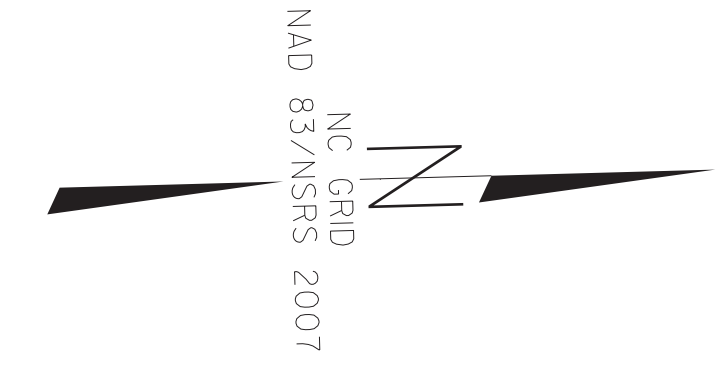
PREPARED IN THE OFFICE OF:
**DIVISION OF HIGHWAYS
UTILITIES UNIT
UTILITIES ENGINEERING**

1555 MAIL SERVICES CENTER
RALEIGH, NC 27699-1555
PHONE (919) 707-6690
FAX (919) 250-4151

Roger Worthington, P.E. UTILITIES SECTION ENGINEER
Carl Barclay, P.E. UTILITIES SQUAD LEADER PROJECT ENGINEER
James Swinson UTILITIES PROJECT DESIGNER

6/1/2015 P:\JOB\0659\075\R-2915A\Utilities\Rdy_Ut\Proj\R-2915A_UO_psh1.tsh.dgn 12:28:33 PM

NOTE:
ALL PROPOSED UTILITY WORK
SHOWN ON THIS SHEET WILL
BE DONE BY OTHERS

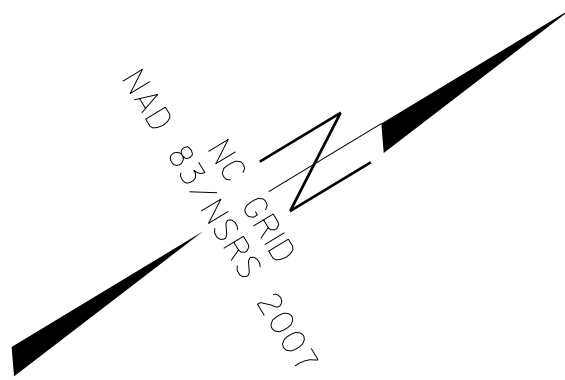


S:\Projects\2007\2915A\Drawings\UG\UG-2.dwg

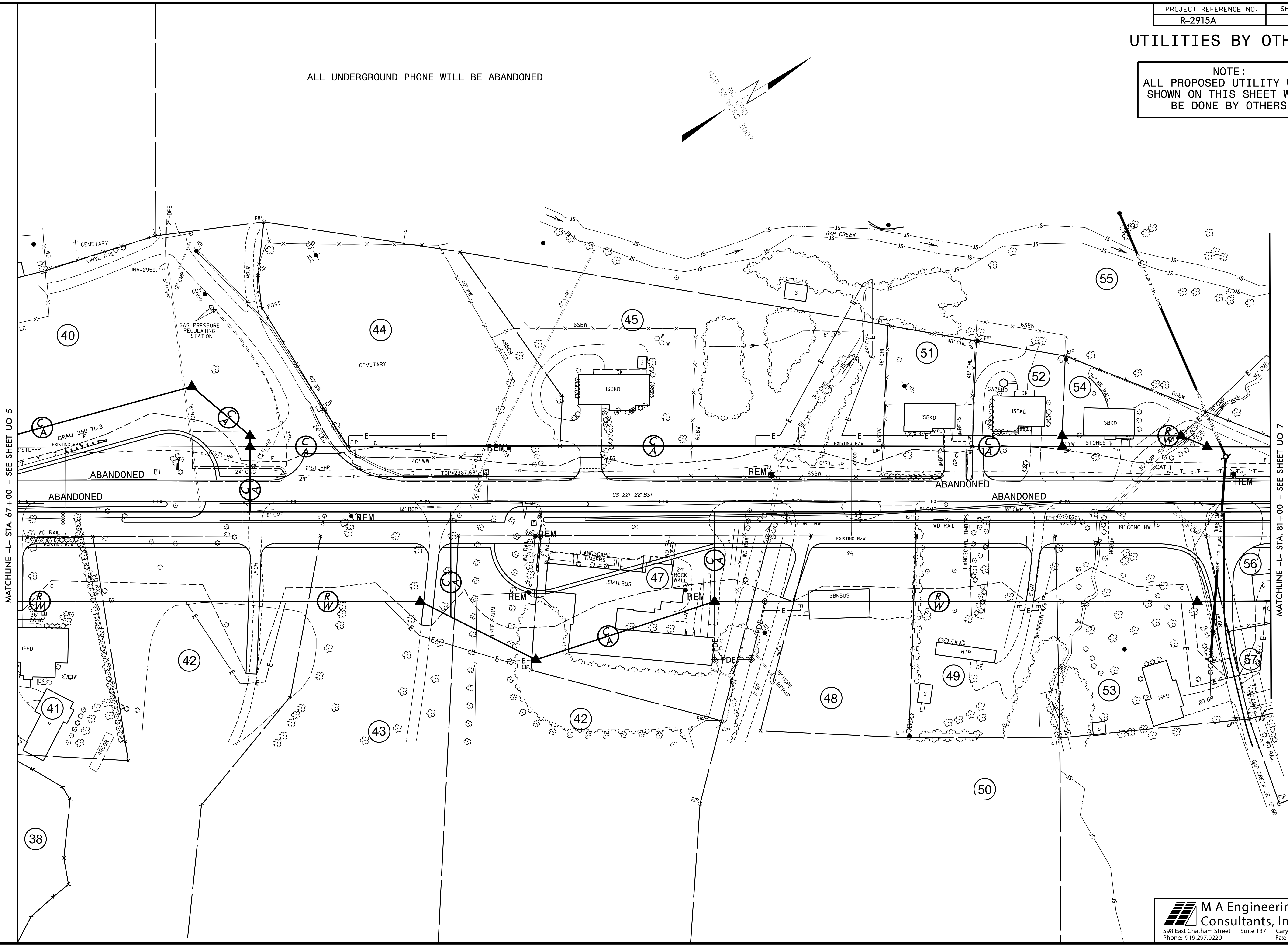
UTILITIES BY OTHERS

NOTE:
ALL PROPOSED UTILITY WORK
SHOWN ON THIS SHEET WILL
BE DONE BY OTHERS

ALL UNDERGROUND PHONE WILL BE ABANDONED



5/14/99 20659\075\RSR\2015\05\11\11\ttes\ProJ\2915A_UO\pst6.dgn

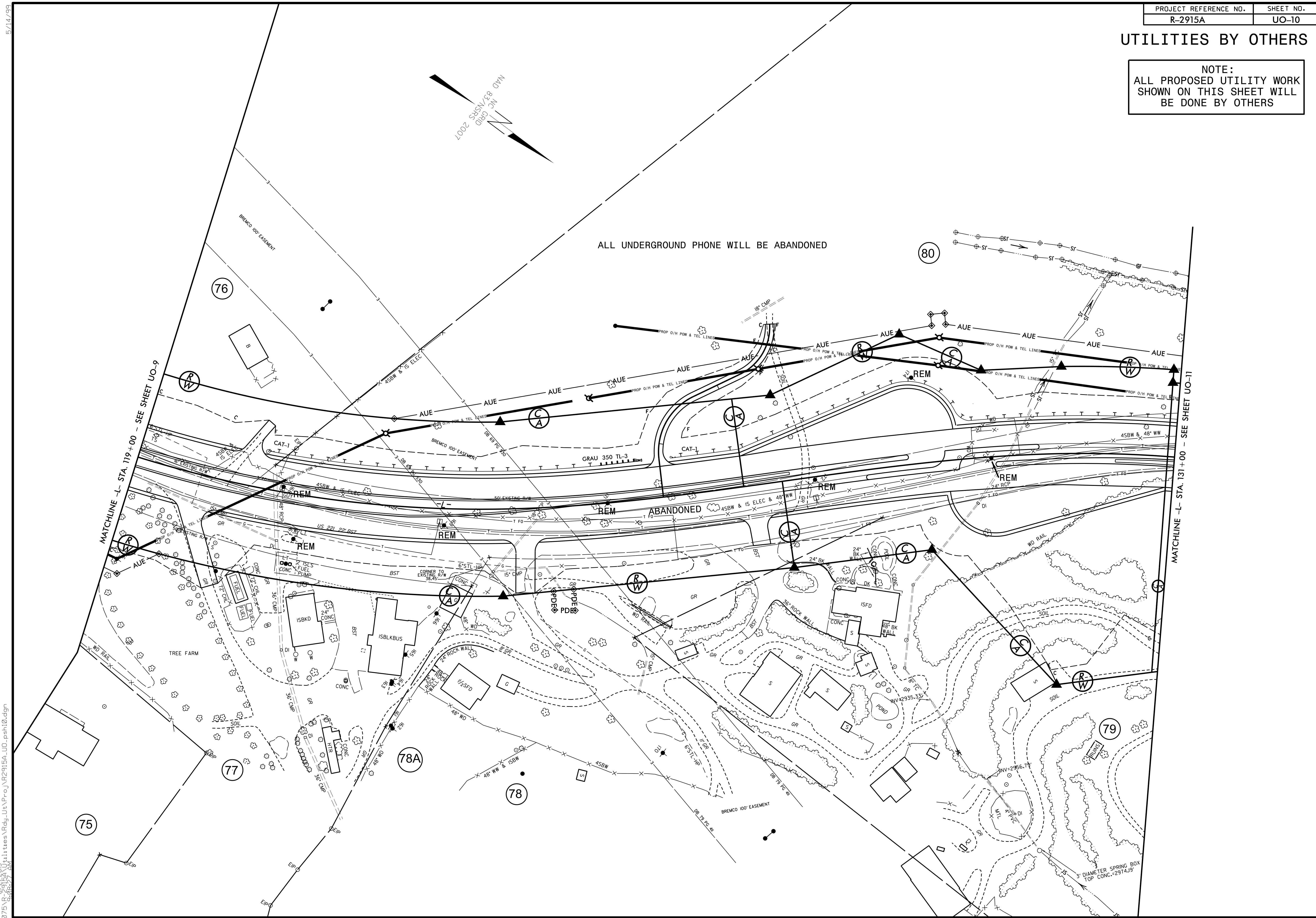


MATCHLINE -L- STA. 67+00 - SEE SHEET UO-5

MATCHLINE -L- STA. 81+00 - SEE SHEET UO-7

UTILITIES BY OTHERS

NOTE:
ALL PROPOSED UTILITY WORK
SHOWN ON THIS SHEET WILL
BE DONE BY OTHERS

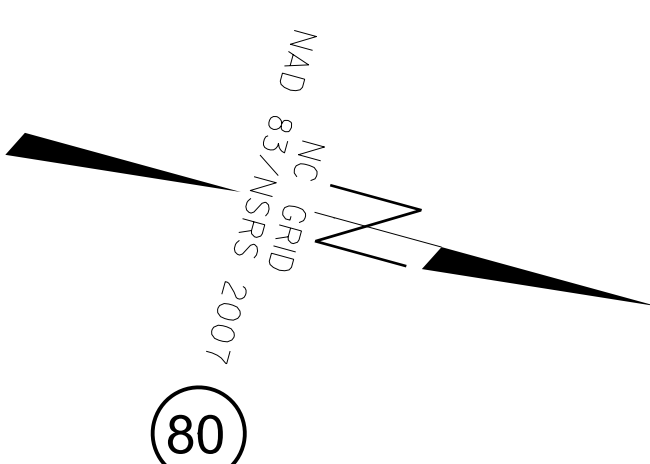
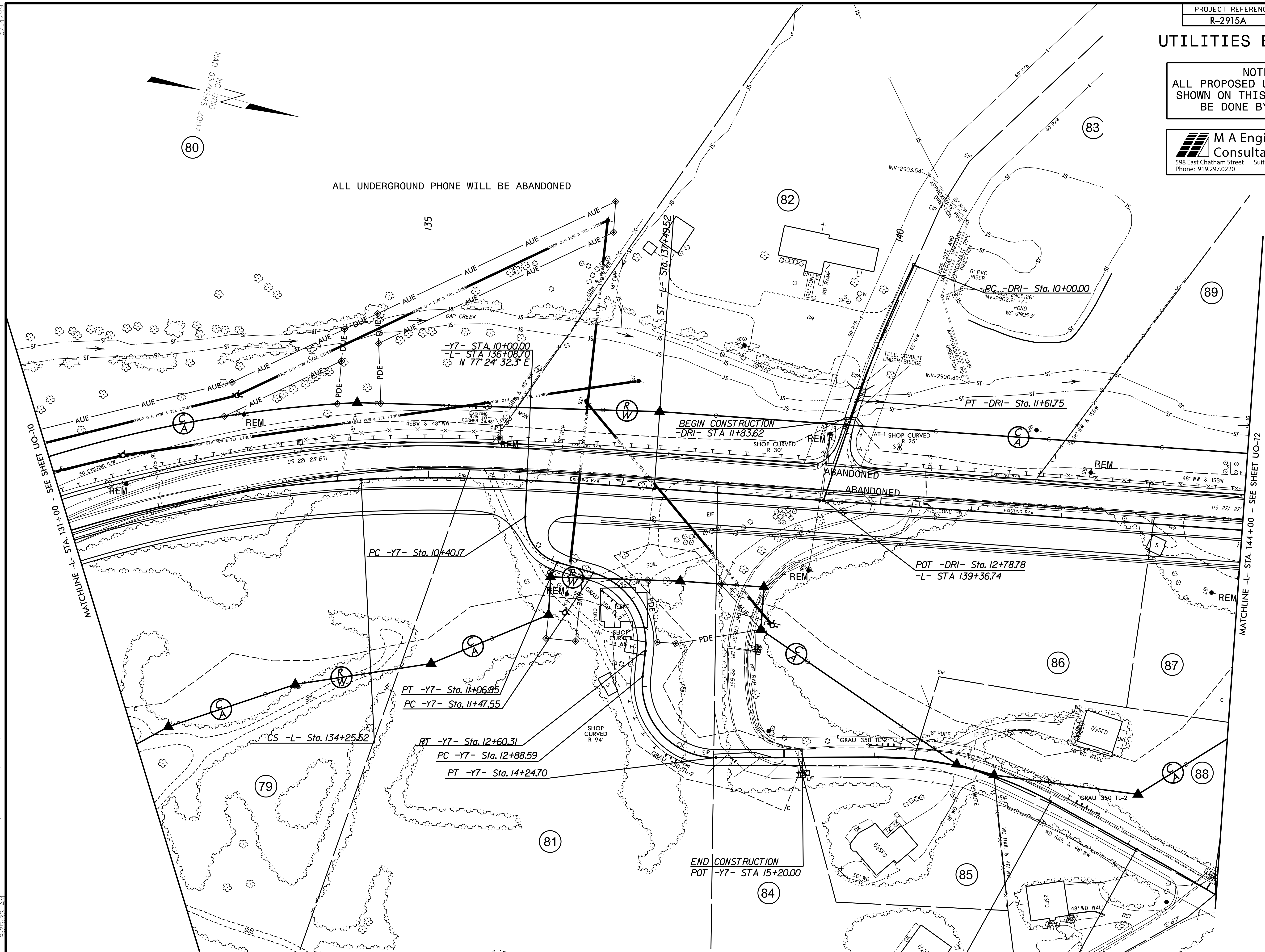


26559\075 IR 5/14/05 11:11 a.m. \R2915A_UO.psh10.dgn
 5/14/05

UTILITIES BY OTHERS

NOTE:
ALL PROPOSED UTILITY WORK
SHOWN ON THIS SHEET WILL
BE DONE BY OTHERS

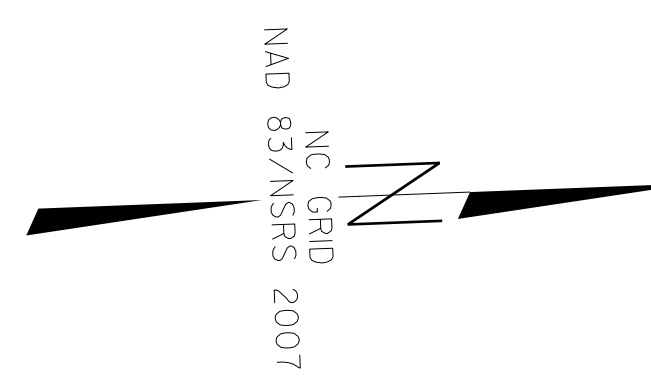
M A Engineering Consultants, Inc.
598 East Chatham Street, Suite 137 Cary, NC 27511
Phone: 919.297.0220 License: F-0160 Fax: 919.297.0221



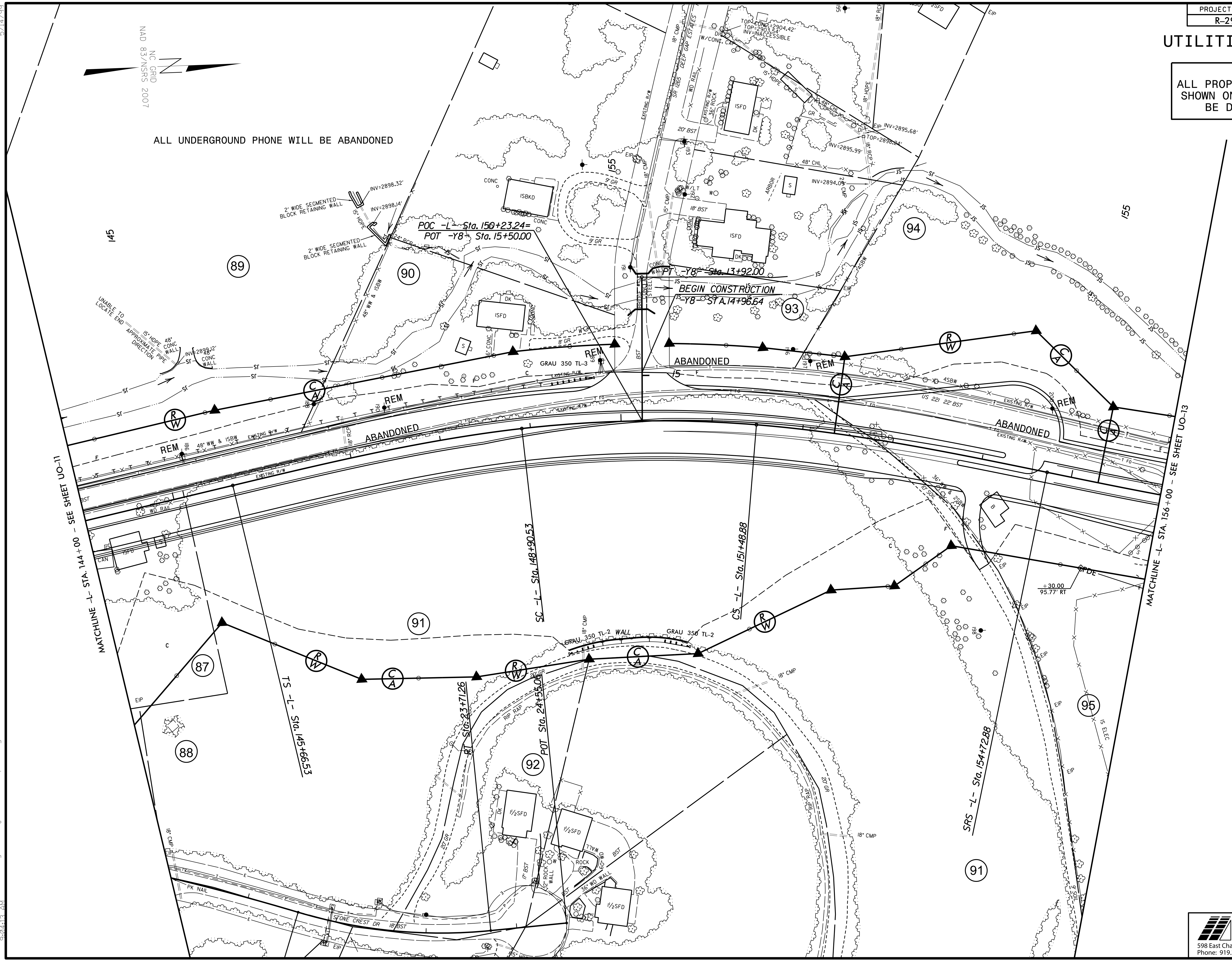
5/14/99
2655\075\B\11\11\11\ttes\Nrdj\Ut\Proj\R2915A_UO-psht11.dgn

UTILITIES BY OTHERS

NOTE:
ALL PROPOSED UTILITY WORK
SHOWN ON THIS SHEET WILL
BE DONE BY OTHERS



ALL UNDERGROUND PHONE WILL BE ABANDONED



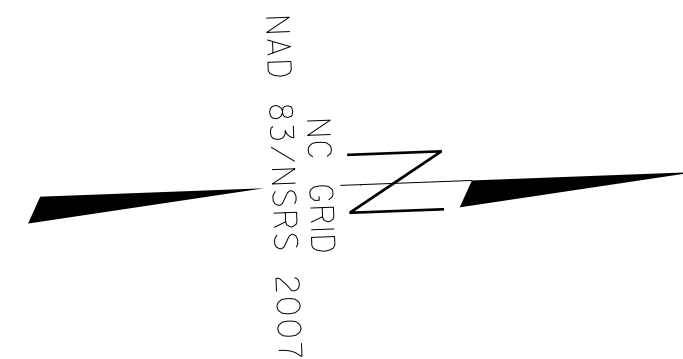
MATCHLINE -L- STA. 144+00 - SEE SHEET UO-11

MATCHLINE -L- STA. 156+00 - SEE SHEET UO-13

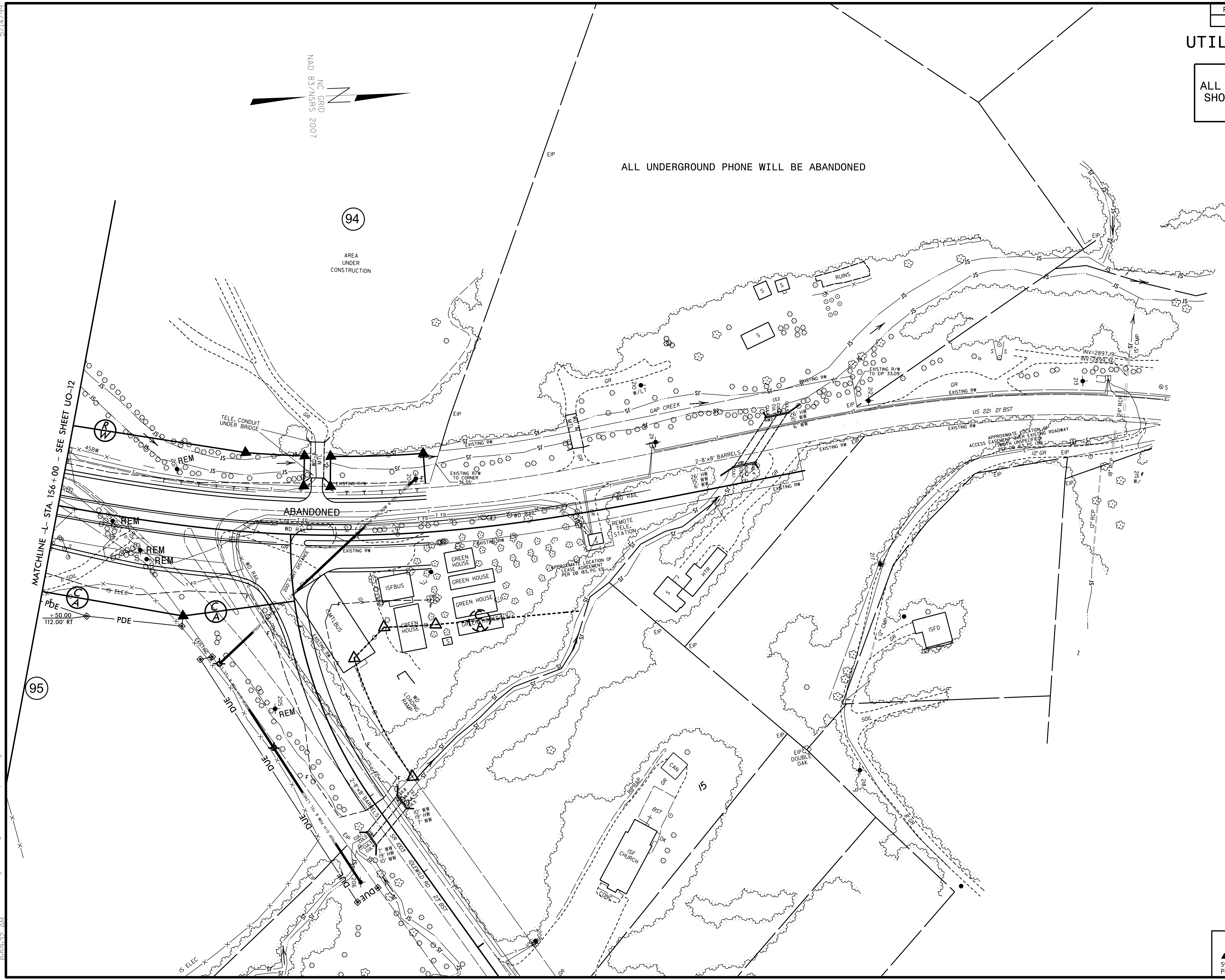
2659\075 IR 5/14/05 11:11:11:ures\Redy_Ut\Proj\2915A_UO-psht12.dgn

UTILITIES BY OTHERS

NOTE:
ALL PROPOSED UTILITY WORK
SHOWN ON THIS SHEET WILL
BE DONE BY OTHERS



ALL UNDERGROUND PHONE WILL BE ABANDONED



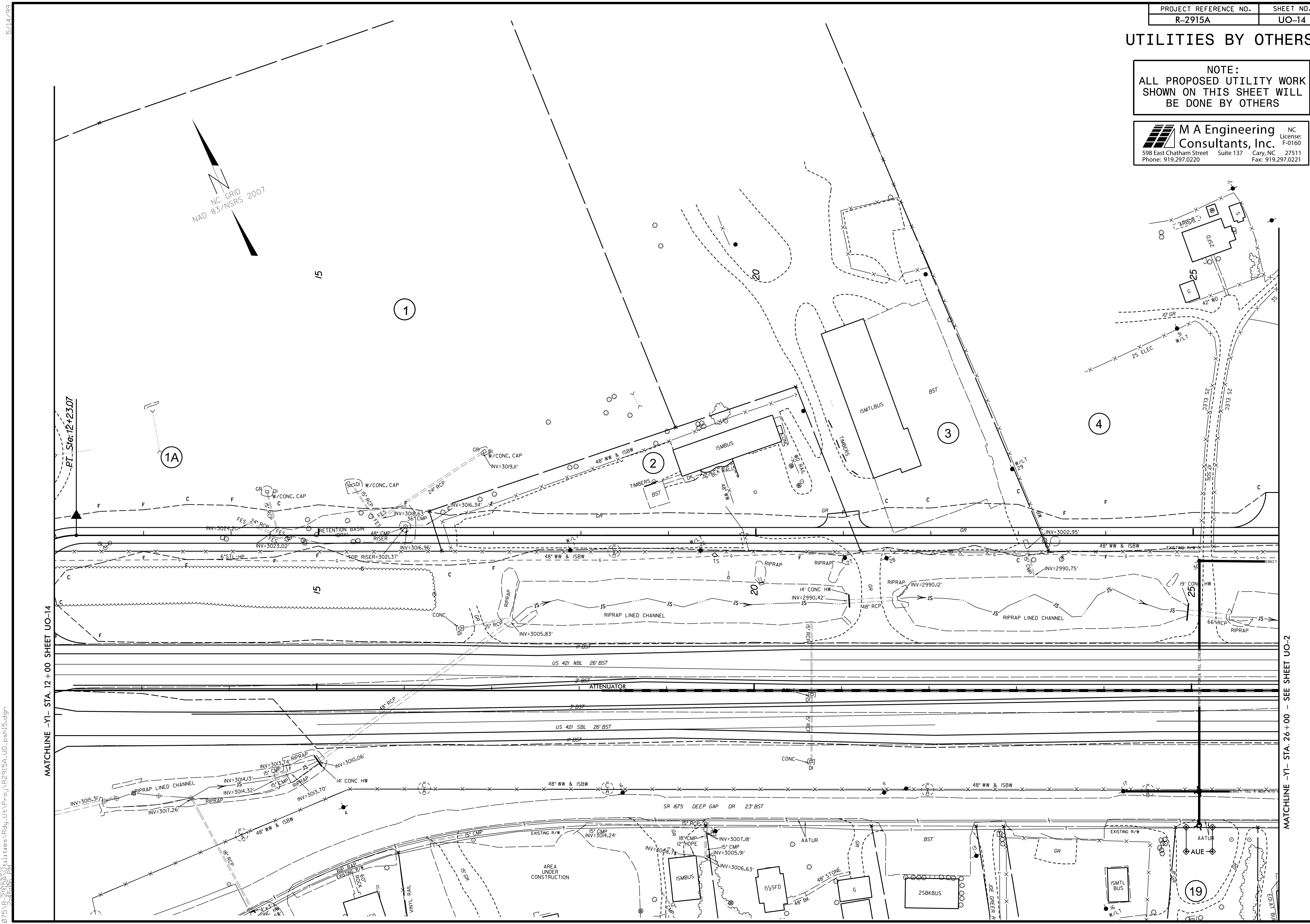
MATCHLINE - L - STA. 156+00 - SEE SHEET UO-12

6659.075 R 5/14/05 11:11:11 tues Rdy Ut \P-roj \R2915A_UO-psht13.dgn

UTILITIES BY OTHERS

NOTE:
ALL PROPOSED UTILITY WORK
SHOWN ON THIS SHEET WILL
BE DONE BY OTHERS

M A Engineering Consultants, Inc.
 598 East Chatham Street Suite 137 Cary, NC 27511
 Phone: 919.297.0220 License: F-0160 Fax: 919.297.0221



NC GRID
NAD 83/NSRS 2007

MATCHLINE -Y1- STA. 12 + 00 SHEET UO-14

MATCHLINE -Y1- STA. 26 + 00 - SEE SHEET UO-2

5/14/99
2659\075\B\642205\11\tues\Redy_Ut\Proo\2915A_UO_psh15.dgn