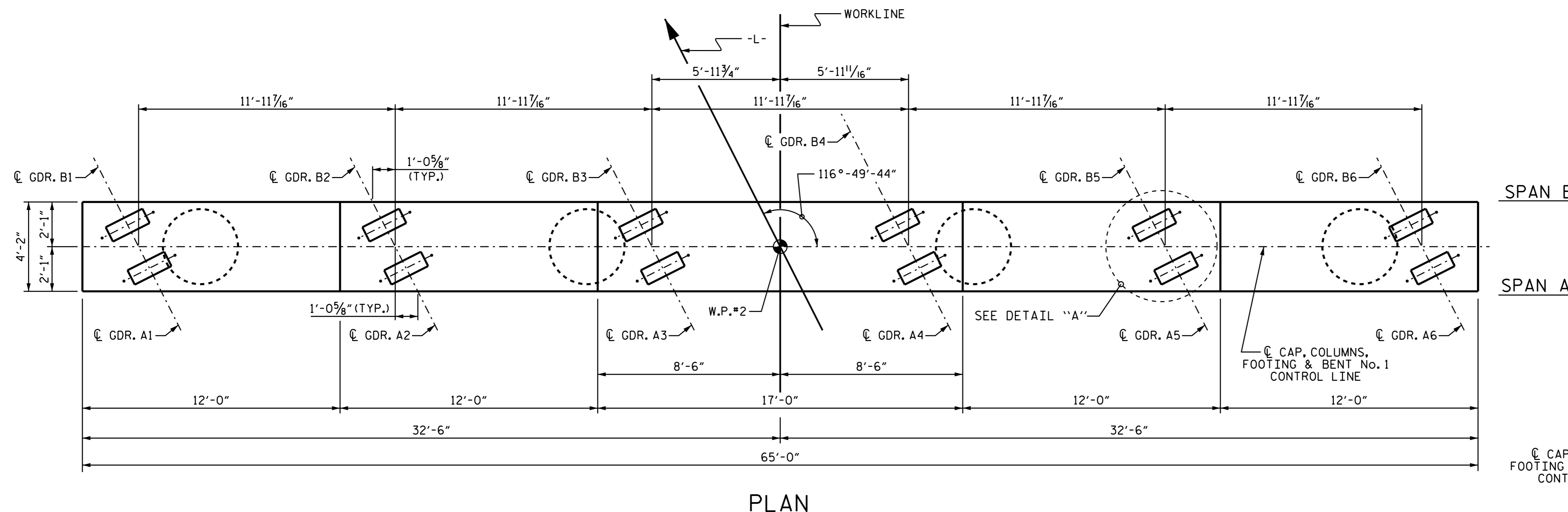


NOTES

STIRRUPS IN CAP MAY BE SHIFTED AS NECESSARY TO CLEAR ANCHOR BOLTS.

HOOKS ON "V" BARS MAY BE TURNED AS NECESSARY FOR PLACING REINFORCING STEEL.

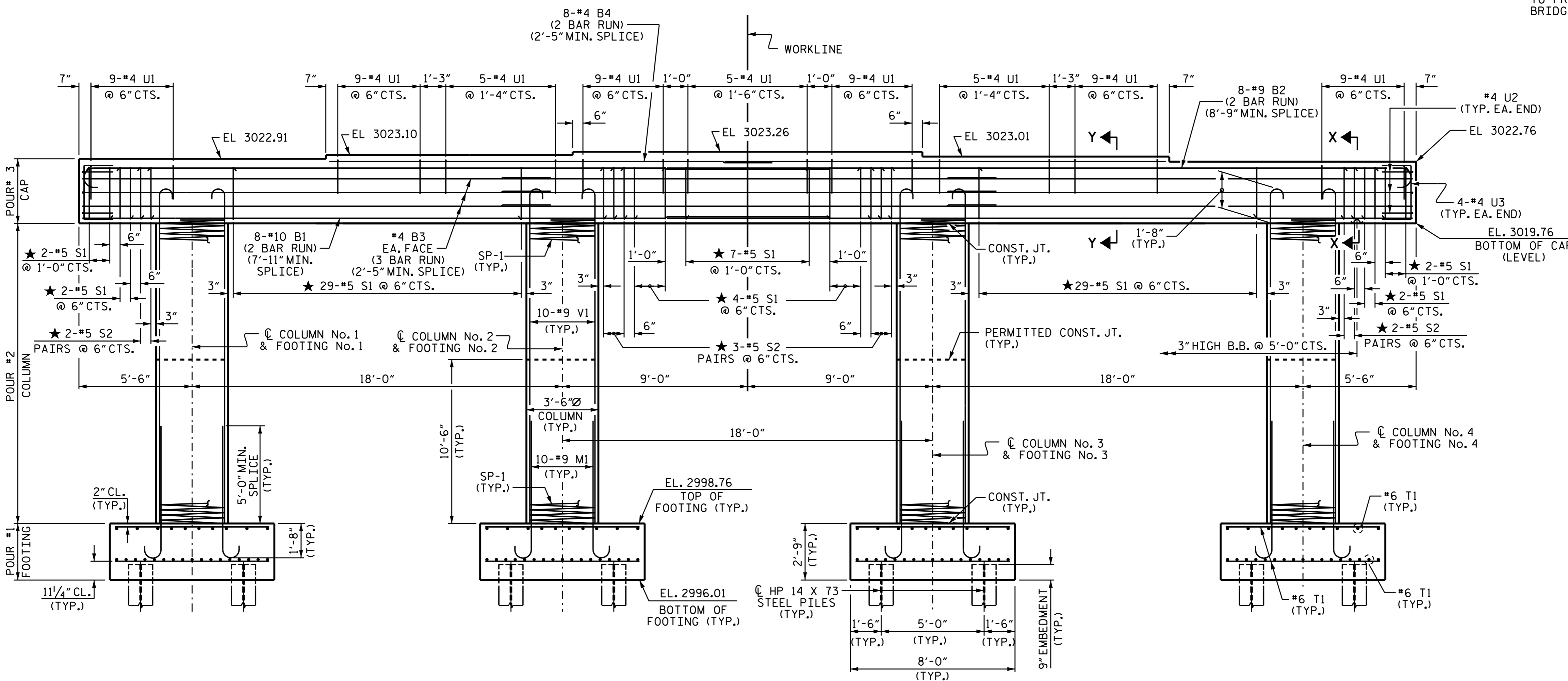
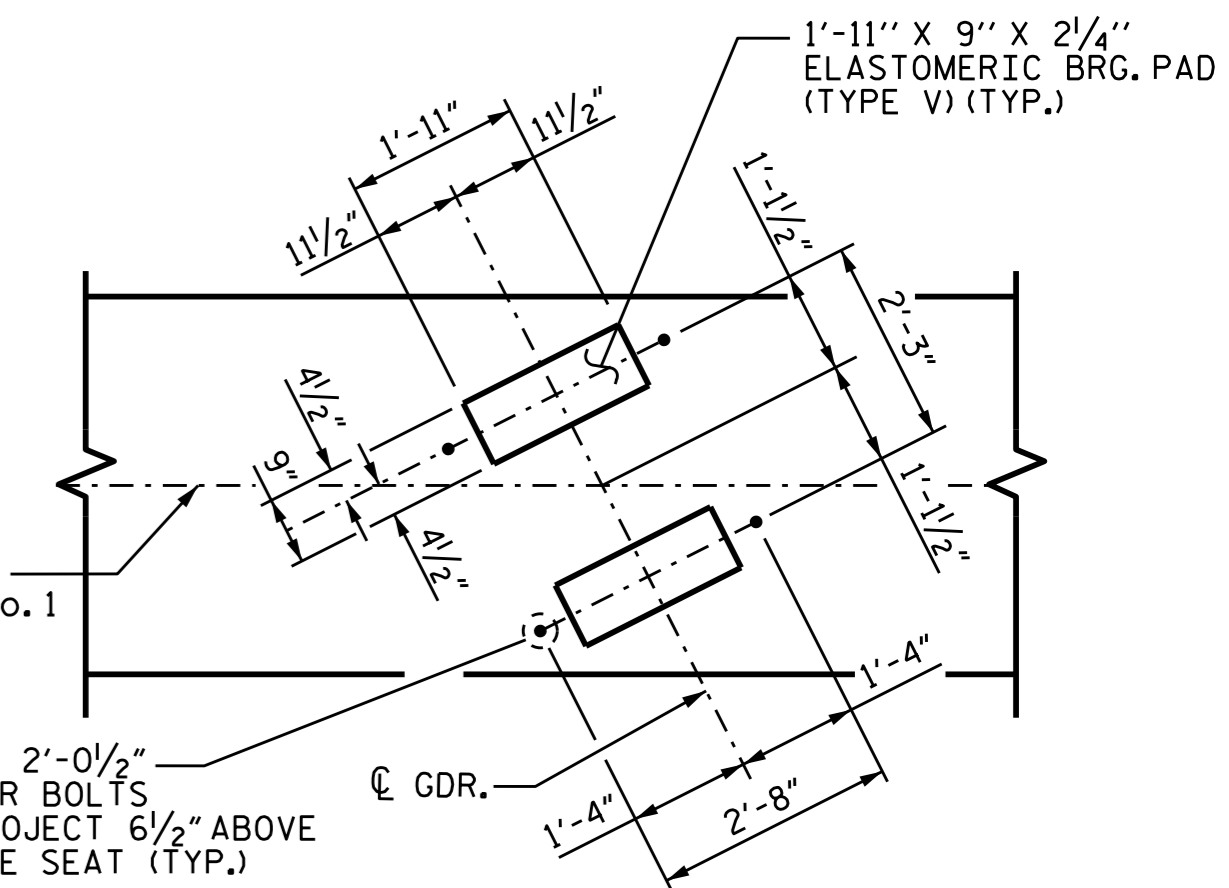
FOR PILE SPLICE DETAILS, SEE END BENT No. 1, SHEET 3 OF 3.



SPAN B

SPAN A

SEE DETAIL "A"
 @ CAP. COLUMNS,
 FOOTING & BENT No. 1
 CONTROL LINE



★ INVERT ALTERNATE STIRRUPS

PROJECT NO. R-2915A
WATAUGA/ASHE COUNTY
 STATION: 11+18.63 -L-

SHEET 1 OF 2



STATE OF NORTH CAROLINA
 DEPARTMENT OF TRANSPORTATION
 RALEIGH
 SUBSTRUCTURE
 BENT No. 1

REVISIONS						SHEET NO.
NO.	BY:	DATE:	NO.	BY:	DATE:	S-24
1			3			TOTAL SHEETS
2			4			31

DRAWN BY: B. N. BARODAWALA DATE: 1-16-15
 CHECKED BY: J. P. MCCARTHA DATE: 1-30-15
 DESIGN ENGINEER OF RECORD: A. M. LEE DATE: 3-15

STR. #1