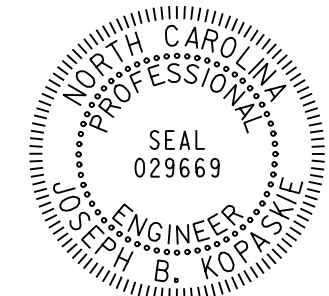
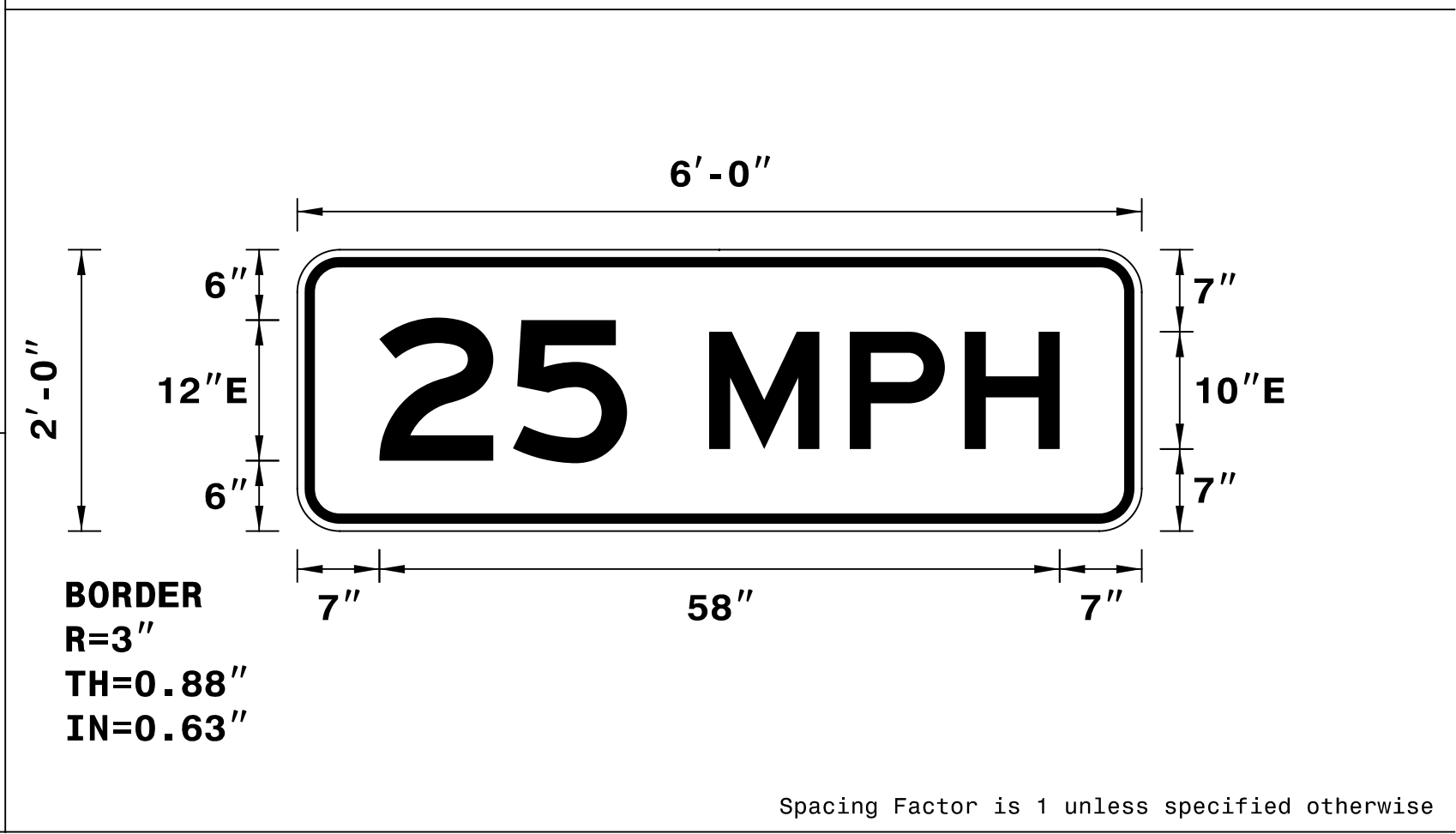


TIP NO. R-2915A	SHEET NO. SIGN-4D
APPROVED: <u>Joseph Kopaskie</u> 5/27/2015	
DATE: 5/27/2015	
SEAL 	

SIGN NUMBER: 201A & 203A BACKG COLOR: Yellow
 TYPE: Warning COPY COLOR: Black
 QUANTITY: 2
 SIGN WIDTH: 6'-0"
 HEIGHT: 2'-0"
 TOTAL AREA: 12.0 Sq.Ft.
 BORDER TYPE: INSET
 RECESS: 0.63"
 WIDTH: 0.88"
 RADII: 3"
 NO. Z BARS: 2
 LENGTH: 64.0
 MAT'L: 0.080" (2.0 mm) ALUMINUM

DESIGN BY: R Drayton CHECKED BY: J Kopaskie DATE: May 07, 2015
 PROJECT ID: R-2915A DIV: 11

USE NOTES: 1,2
 1. Legend and border shall be direct applied black non-reflective sheeting.
 2. Background shall be Grade C Yellow reflective sheeting.



LETTER POSITIONS

Letter spacings are to start of next letter

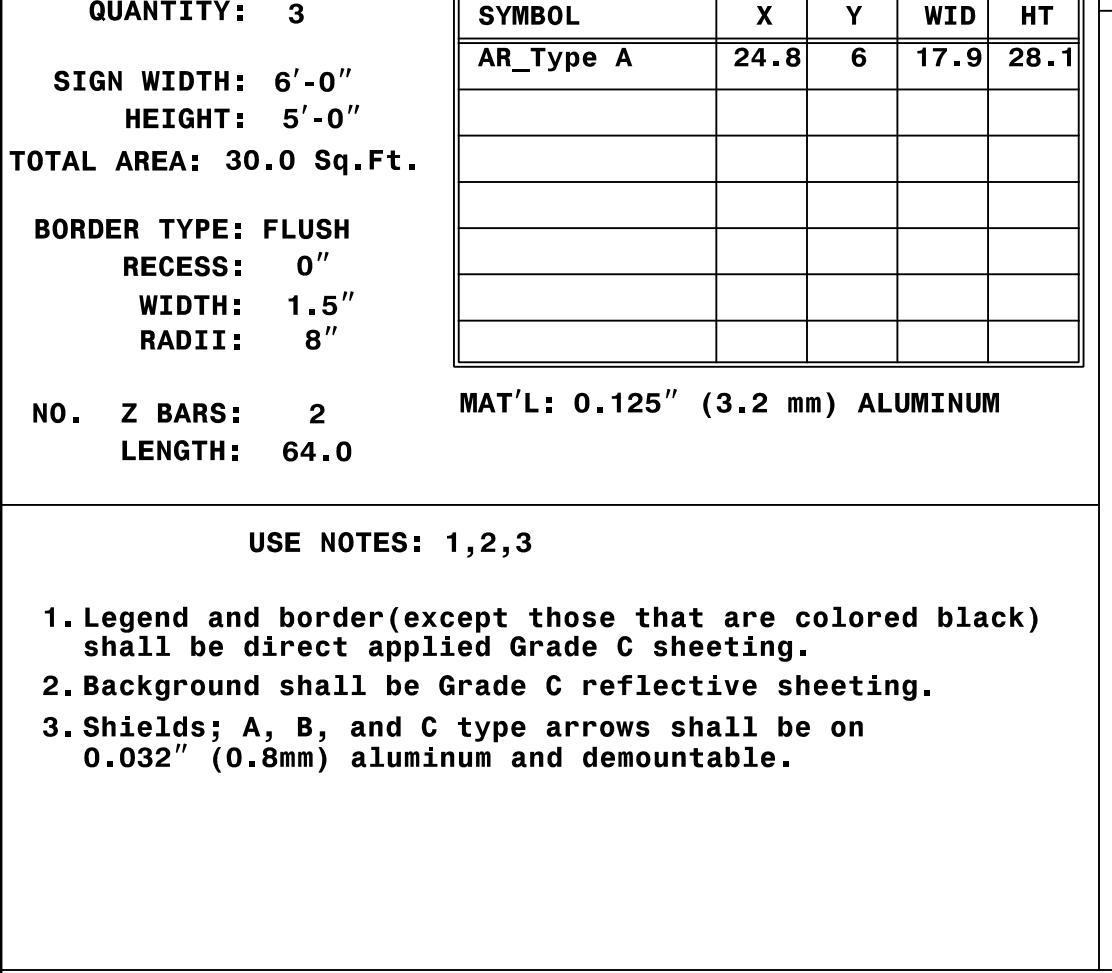
	2	5	M	P	H																Series/Size Text Length
	7	11.4	9.7	7	12	9.8	8.1	7													E 2000
																					58

FILENAME: To scale Sign Designs NORTH CAROLINA D.O.T. SIGN DETAIL

SIGN NUMBER: 201B, 202, 203B BACKG COLOR: Green
 TYPE: A COPY COLOR: White
 QUANTITY: 3
 SIGN WIDTH: 6'-0"
 HEIGHT: 5'-0"
 TOTAL AREA: 30.0 Sq.Ft.
 BORDER TYPE: FLUSH
 RECESS: 0"
 WIDTH: 1.5"
 RADII: 8"
 NO. Z BARS: 2
 LENGTH: 64.0
 MAT'L: 0.125" (3.2 mm) ALUMINUM

USE NOTES: 1,2,3
 1. Legend and border (except those that are colored black) shall be direct applied Grade C sheeting.
 2. Background shall be Grade C reflective sheeting.
 3. Shields; A, B, and C type arrows shall be on 0.032" (0.8mm) aluminum and demountable.

DESIGN BY: R Drayton CHECKED BY: J Kopaskie DATE: Jan 07, 2015
 PROJECT ID: R-2915A DIV: 11



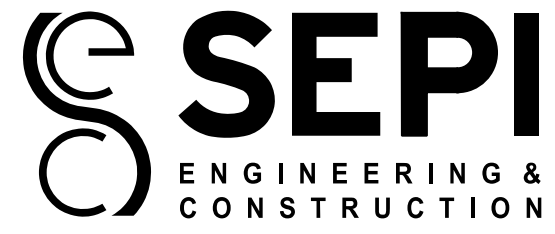
LETTER POSITIONS

Letter spacings are to start of next letter

	E	X	I	T																	Series/Size Text Length
	17.5	10.6	13	4.6	8.9	17.5															EM 2000
																					37

FILENAME: Sign Designs NORTH CAROLINA D.O.T. SIGN DETAIL

5/13/2015 6:11:12 AM G:\Transportation\TR13\017.00 NCDOT 2012 Traffic LSA\TR13\017.06 (R-2915A) Signing & PMP\Signing\Engseed 6-11-12.dgn



1025 Wade Avenue
 Raleigh, NC 27605
 Tel: 919-789-9977
 Fax: 919-789-9591
 License: C-2197

SIGN DESIGNS