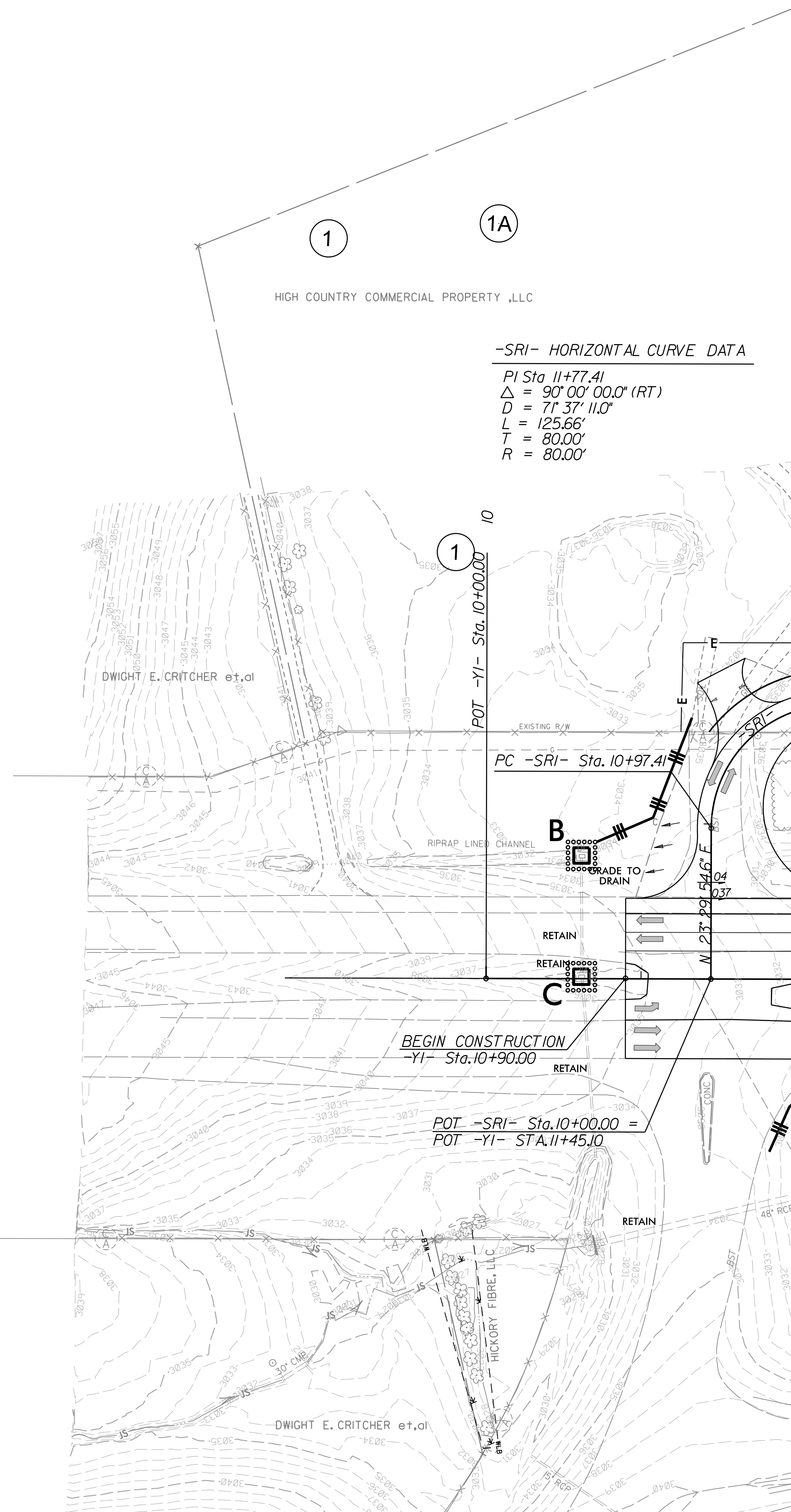
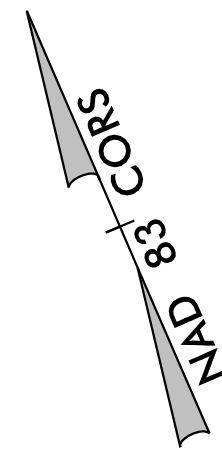


0627/14 ROW REV: REVISED PROPERTY LINES AND ADDED PARCEL 1A WITH PROPERTY OWNER AND DEED REFERENCE. - KNW
 0005/15 ROW REV: REVISED ROW AND TCE ON PARCELS 1 AND 1A. - KNW

\$FILE\$
 \$DATE\$



-SRI- HORIZONTAL CURVE DATA

PI Sta 11+77.41
 $\Delta = 90^{\circ}00'00.0''$ (RT)
 $D = 71^{\circ}37'11.0''$
 $L = 125.66'$
 $T = 80.00'$
 $R = 80.00'$

NOTE:
 PLACE TEMPORARY ROCK SEDIMENT DAMS TYPE - B
 AND TEMPORARY ROCK SILT CHECKS TYPE - A AT
 DRAINAGE OUTLETS.

NOTE:
 PERIMETER EROSION CONTROL MEASURES SHALL BE
 INSTALLED DURING CLEARING AND GRUBBING PHASE.

NOTES: ANY DEVIATION FROM OPTIONS GIVEN WILL
 REQUIRE PRIOR APPROVAL BY ENGINEER.


ADDITIONAL EROSION CONTROL DEVICES MAY
 NEED TO BE INSTALLED AS DIRECTED BY THE
 ENGINEER.

MATCHLINE -YI- STA. 12+00 SHEET 16


SEE SHEET 41 FOR -YI- PROFILE

CLEARING AND GRUBBING
 EROSION CONTROL FOR
 CONSTRUCTION SHEET 17

PROJECT REFERENCE NO. <i>R-2915A</i>	SHEET NO. <i>EC-17/CONST.17</i>
RW SHEET NO.	
ROADWAY DESIGN ENGINEER	HYDRAULICS ENGINEER



RS&H
 IMPROVING YOUR WORLD
© 2012 REYNOLDS, SMITH AND HILLS INC.
 RS&H Architects-Engineers-Planners, Inc.
 1520 South Boulevard, Suite 200
 Charlotte, NC 28203
 Phone: 704-752-0610
 NC License No. F-0493 www.rsandh.com



V&M
 Consulting Engineers
 Asheville, North Carolina
 828-253-2796

Charlotte, NC 28203
 Tri-Cities, TN 37614
 Knoxville, TN 37919
 Middleboro, MA 01545
 Spartanburg, SC 29326
 South Carolina 29326