

PROJECT REFERENCE NO.	SHEET NO.
R-2915A	EC-14/CONST.14
RW SHEET NO.	HYDRAULICS ENGINEER
ROADWAY DESIGN ENGINEER	

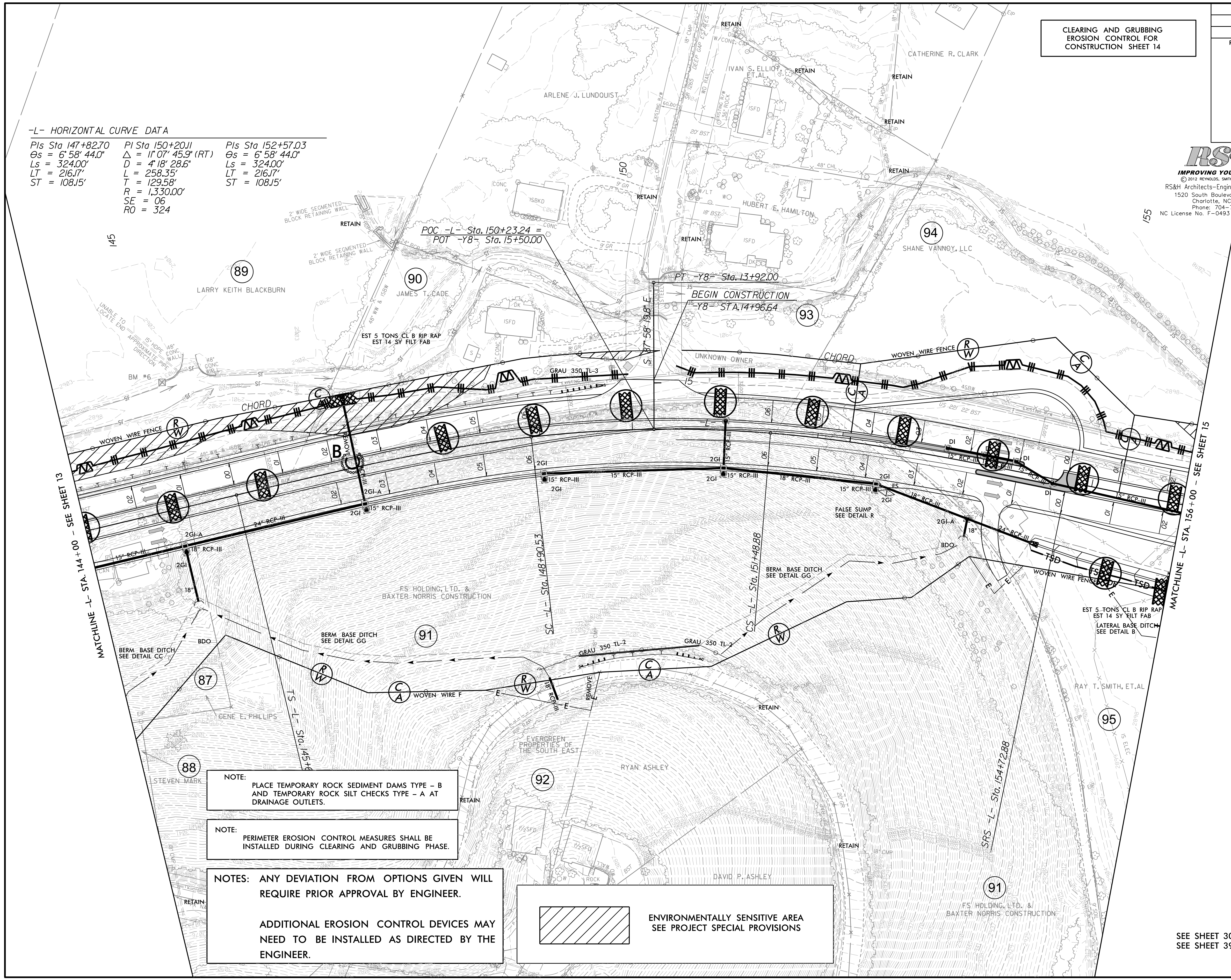
CLEARING AND GRUBBING  
EROSION CONTROL FOR  
CONSTRUCTION SHEET 14

**RS&H**  
IMPROVING YOUR WORLD  
© 2012 REYNOLDS, SMITH AND HILLS INC.  
RS&H Architects-Engineers-Planners, Inc.  
1520 South Boulevard, Suite 200  
Charlotte, NC 28203  
Phone: 704-752-0610  
NC License No. F-0493 www.rsandh.com

**V&M**  
Vannoy & Minton  
Consulting Engineers  
Asheville, North Carolina  
828-253-2796  
South Carolina  
843-534-0715

**-L- HORIZONTAL CURVE DATA**

PIs Sta 147+82.70	PI Sta 150+20.11	PIs Sta 152+57.03
Os = 6°58'44.0"	Δ = 11°07'45.9" (RT)	Os = 6°58'44.0"
Ls = 324.00'	D = 4'18" 28.6"	Ls = 324.00'
LT = 216.17'	L = 258.35'	LT = 216.17'
ST = 108.15'	T = 129.58'	ST = 108.15'
	R = 1,330.00'	
	SE = 06	
	RO = 324	



NOTE: PLACE TEMPORARY ROCK SEDIMENT DAMS TYPE - B AND TEMPORARY ROCK SILT CHECKS TYPE - A AT DRAINAGE OUTLETS.

NOTE: PERIMETER EROSION CONTROL MEASURES SHALL BE INSTALLED DURING CLEARING AND GRUBBING PHASE.

NOTES: ANY DEVIATION FROM OPTIONS GIVEN WILL REQUIRE PRIOR APPROVAL BY ENGINEER.

ADDITIONAL EROSION CONTROL DEVICES MAY NEED TO BE INSTALLED AS DIRECTED BY THE ENGINEER.

 ENVIRONMENTALLY SENSITIVE AREA  
SEE PROJECT SPECIAL PROVISIONS

SEE SHEET 30 FOR -L- PROFILE  
SEE SHEET 39 FOR -Y8- PROFILE

\$DATE\$