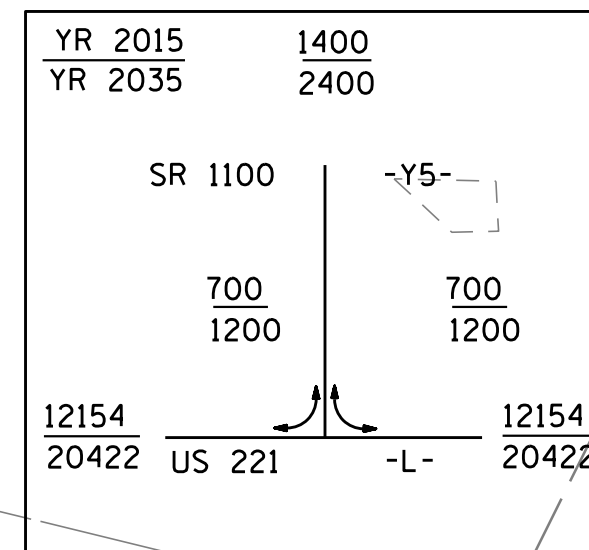


RS&H
IMPROVING YOUR WORLD
 © 2012 REYNOLDS, SMITH AND HILLS, INC.
 RS&H Architects-Engineers-Planners, Inc.
 1520 South Boulevard, Suite 200
 Charlotte, NC 28203
 Phone: 704-752-0610
 NC-License No. F-0493 www.rsandh.com

V&M
 Consulting Engineers
 Asheville, NC
 North Carolina
 828-253-2796
 Raleigh, NC
 919-977-9655

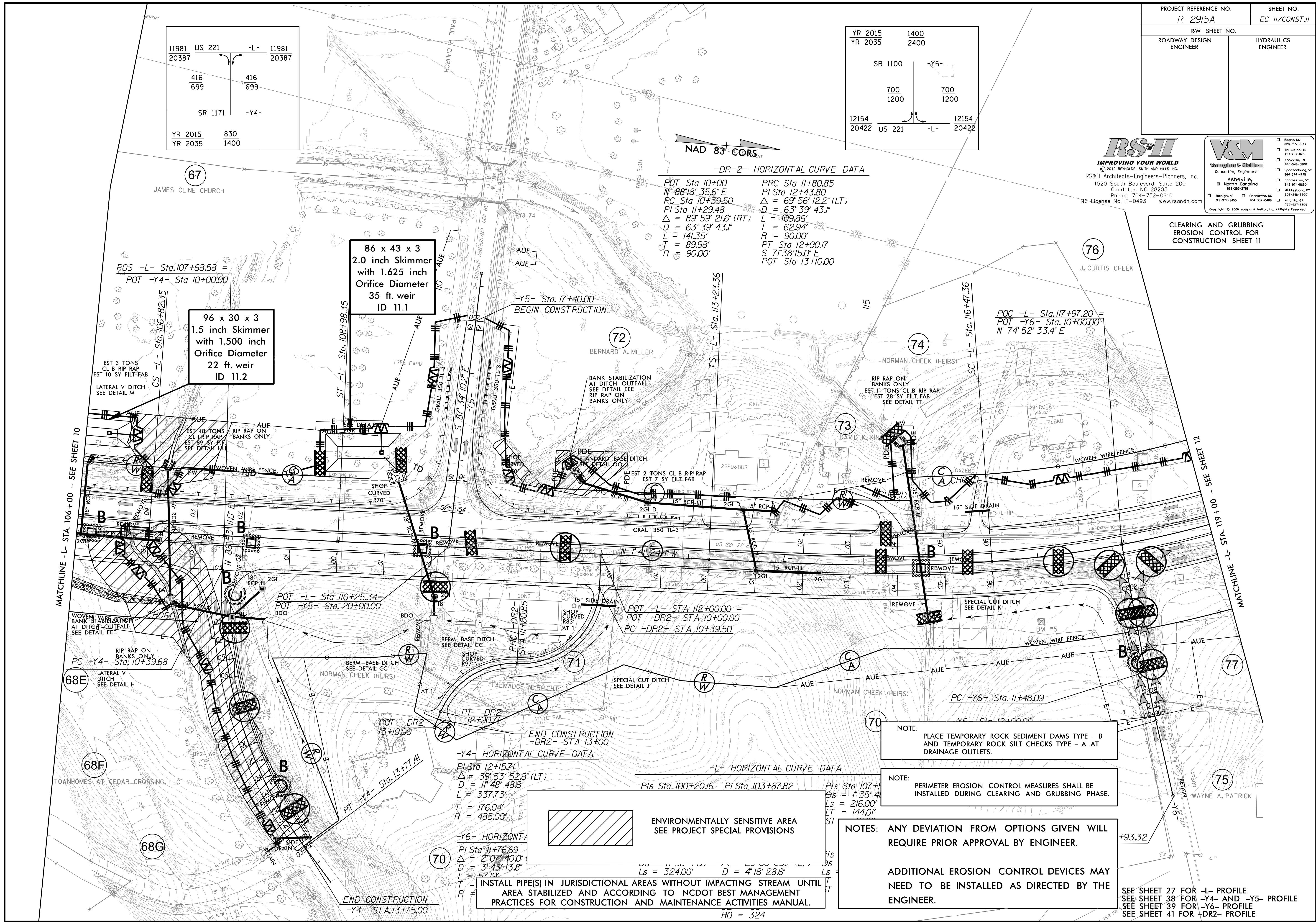
CLEARING AND GRUBBING
 EROSION CONTROL FOR
 CONSTRUCTION SHEET 11



-DR-2- HORIZONTAL CURVE DATA

POT Sta 10+00	PRC Sta 11+80.85
N 88°18'35.6" E	PI Sta 12+43.80
PC Sta 10+39.50	Δ = 69°56'12.2" (LT)
PI Sta 11+29.48	D = 63°39'43.1"
Δ = 89°59'21.6" (RT)	L = 109.86'
D = 63°39'43.1"	T = 62.94'
L = 141.35'	R = 90.00'
T = 89.98'	PT Sta 12+90.17
R = 90.00'	S 71°38'15.0" E
	POT Sta 13+10.00

11981 US 221	-L-	11981
20387		20387
416		416
699		699
SR 1171	-Y4-	
YR 2015	830	
YR 2035	1400	



POS -L- Sta.107+68.58 =
 POT -Y4- Sta 10+00.00

96 x 30 x 3
 1.5 inch Skimmer
 with 1.500 inch
 Orifice Diameter
 22 ft. weir
 ID 11.2

86 x 43 x 3
 2.0 inch Skimmer
 with 1.625 inch
 Orifice Diameter
 35 ft. weir
 ID 11.1

-Y5- Sta.17+40.00
 BEGIN CONSTRUCTION

POC -L- Sta.117+97.20 =
 POT -Y6- Sta.10+00.00
 N 74°52'33.4" E

POT -L- Sta 110+25.34 =
 POT -Y5- Sta. 20+00.00

POT -L- STA 112+00.00 =
 POT -DR2- STA 10+00.00
 PC -DR2- STA 10+39.50

PC -Y4- Sta. 10+39.68

PC -Y6- Sta. 11+48.09

-Y4- HORIZONTAL CURVE DATA

PI Sta 12+15.71
Δ = 39°53'52.8" (LT)
D = 11°48'48.8"
L = 337.73'
T = 176.04'
R = 485.00'

-L- HORIZONTAL CURVE DATA

PIs Sta 100+20.16	PI Sta 103+87.82
Δs = 1°35'4"	Ls = 216.00'
L = 144.00'	

ENVIRONMENTALLY SENSITIVE AREA
 SEE PROJECT SPECIAL PROVISIONS

INSTALL PIPE(S) IN JURISDICTIONAL AREAS WITHOUT IMPACTING STREAM UNTIL AREA STABILIZED AND ACCORDING TO NCDOT BEST MANAGEMENT PRACTICES FOR CONSTRUCTION AND MAINTENANCE ACTIVITIES MANUAL.

NOTE: PLACE TEMPORARY ROCK SEDIMENT DAMS TYPE - B AND TEMPORARY ROCK SILT CHECKS TYPE - A AT DRAINAGE OUTLETS.

NOTE: PERIMETER EROSION CONTROL MEASURES SHALL BE INSTALLED DURING CLEARING AND GRUBBING PHASE.

NOTES: ANY DEVIATION FROM OPTIONS GIVEN WILL REQUIRE PRIOR APPROVAL BY ENGINEER.

ADDITIONAL EROSION CONTROL DEVICES MAY NEED TO BE INSTALLED AS DIRECTED BY THE ENGINEER.

SEE SHEET 27 FOR -L- PROFILE
 SEE SHEET 38 FOR -Y4- AND -Y5- PROFILE
 SEE SHEET 39 FOR -Y6- PROFILE
 SEE SHEET 41 FOR -DR2- PROFILE

\$DATE\$ \$FILE\$