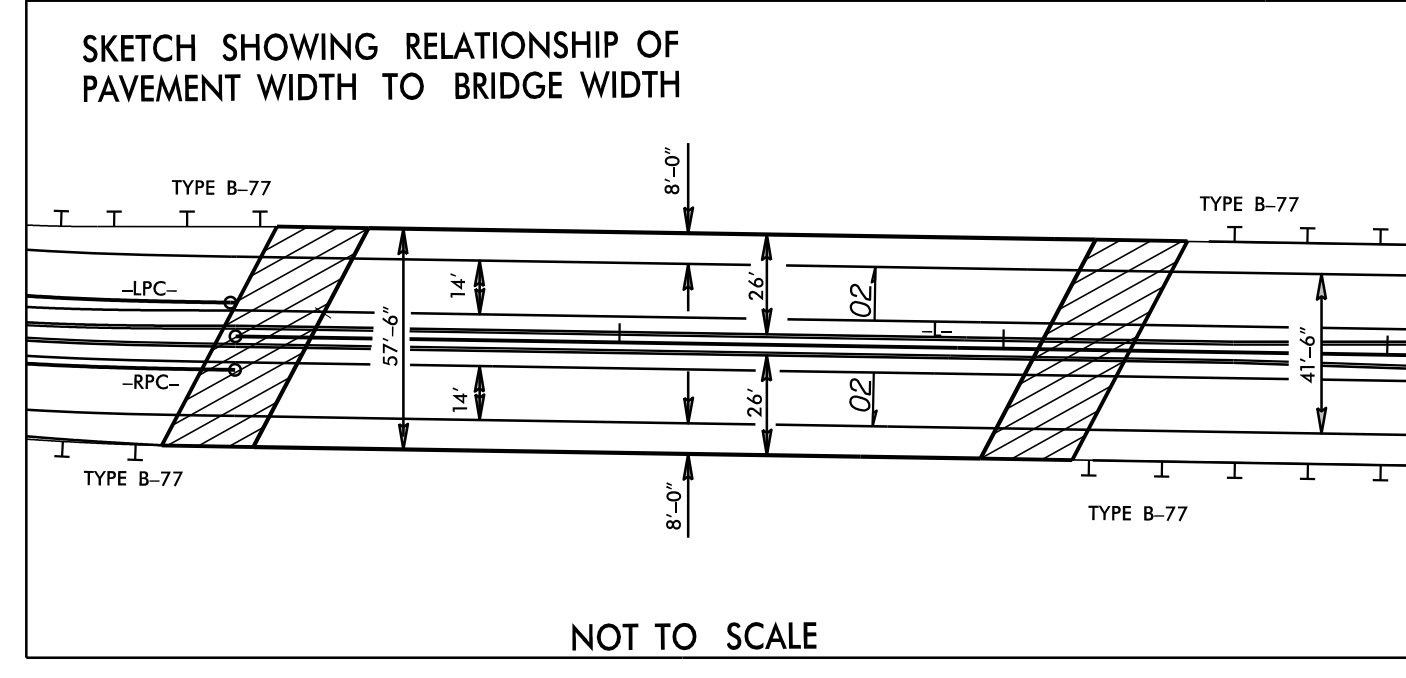


20,110	9750	12,110
33,400	16600	20,400
US 421	-Y1-	
		-L-
	2230	US 221
	3800	
YR 2015	12,600	
YR 2035	20,600	

INSTALL PIPE(S) IN JURISDICTIONAL AREAS WITHOUT IMPACTING STREAM UNTIL AREA STABILIZED AND ACCORDING TO NCDOT BEST MANAGEMENT PRACTICES FOR CONSTRUCTION AND MAINTENANCE ACTIVITIES MANUAL.



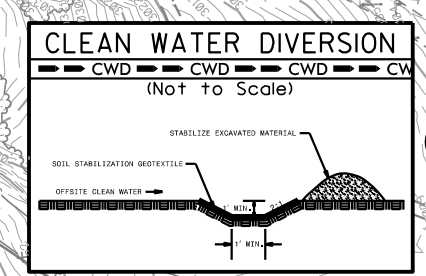
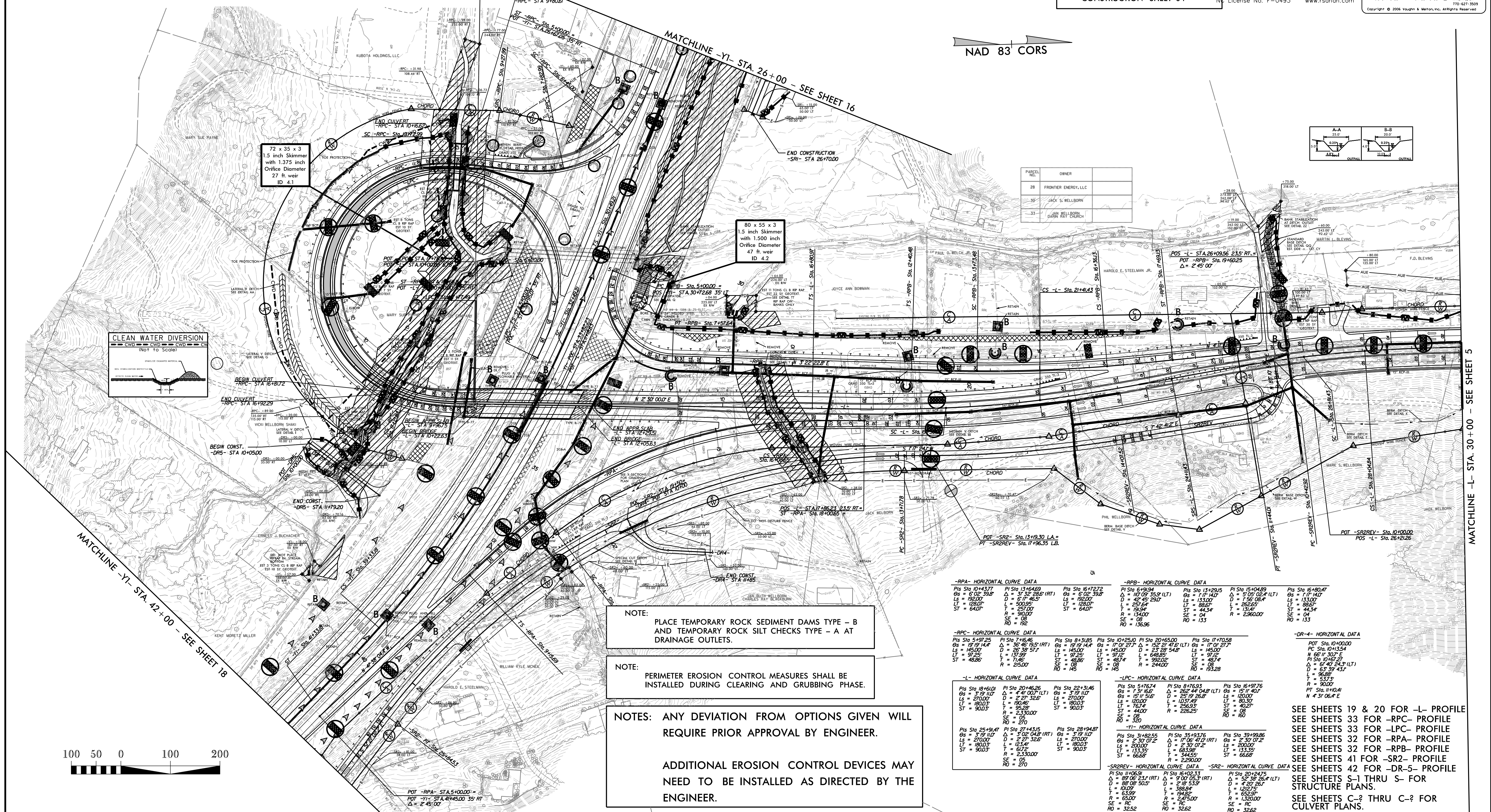
CLEARING AND GRUBBING EROSION CONTROL FOR CONSTRUCTION SHEET 04

PROJECT REFERENCE NO.	SHEET NO.
R-2915A	EC-04/CONST.04
RW SHEET NO.	
ROADWAY DESIGN ENGINEER	HYDRAULICS ENGINEER

RS&H
IMPROVING YOUR WORLD
2012 RENOVOS, SMITH AND HILLS INC.
RS&H Architects-Engineers-Planners, Inc.
1520 South Boulevard, Suite 200
Charlotte, NC 28203
Phone: 704-752-0610
License No. F-0493 www.rsandh.com

V&M
Consulting Engineers
Asheville, North Carolina
828-253-2796
Raleigh, NC 919-971-3455
Charlotte, NC 704-337-0488
Arlington, VA 703-427-3509
Copyright © 2006 V&M and H&H, All Rights Reserved.

BEGIN TIP PROJECT R-2915A
-L- POT STA. 9+96.75



PARCEL NO.	OWNER
28	FRONTIER ENERGY, LLC
30	JACK S. WELBORN
33	JACK WELBORN DANIEL REY CURVEY

NOTE: PLACE TEMPORARY ROCK SEDIMENT DAMS TYPE - B AND TEMPORARY ROCK SILT CHECKS TYPE - A AT DRAINAGE OUTLETS.

NOTE: PERIMETER EROSION CONTROL MEASURES SHALL BE INSTALLED DURING CLEARING AND GRUBBING PHASE.

NOTES: ANY DEVIATION FROM OPTIONS GIVEN WILL REQUIRE PRIOR APPROVAL BY ENGINEER.

ADDITIONAL EROSION CONTROL DEVICES MAY NEED TO BE INSTALLED AS DIRECTED BY THE ENGINEER.

-RPA- HORIZONTAL CURVE DATA				-RPB- HORIZONTAL CURVE DATA				-RPC- HORIZONTAL CURVE DATA				-L- HORIZONTAL CURVE DATA				-LPC- HORIZONTAL CURVE DATA				-SR2REV- HORIZONTAL CURVE DATA				
PI Sta 10+413.77	PI Sta 11+459.99	PI Sta 16+727.2	PI Sta 6+939.4	PI Sta 13+293.5	PI Sta 15+048.8	PI Sta 10+413.77	PI Sta 11+459.99	PI Sta 16+727.2	PI Sta 6+939.4	PI Sta 13+293.5	PI Sta 15+048.8	PI Sta 10+413.77	PI Sta 11+459.99	PI Sta 16+727.2	PI Sta 6+939.4	PI Sta 13+293.5	PI Sta 15+048.8	PI Sta 10+413.77	PI Sta 11+459.99	PI Sta 16+727.2	PI Sta 6+939.4	PI Sta 13+293.5	PI Sta 15+048.8	
Δ = 6°02'33.8"	Δ = 3°32'28.5" (RT)	Δ = 5°17'46.5"	Δ = 17°01'27.7"	Δ = 42°45'29.0"	Δ = 133.00'	Δ = 6°02'33.8"	Δ = 3°32'28.5" (RT)	Δ = 5°17'46.5"	Δ = 17°01'27.7"	Δ = 42°45'29.0"	Δ = 133.00'	Δ = 6°02'33.8"	Δ = 3°32'28.5" (RT)	Δ = 5°17'46.5"	Δ = 17°01'27.7"	Δ = 42°45'29.0"	Δ = 133.00'	Δ = 6°02'33.8"	Δ = 3°32'28.5" (RT)	Δ = 5°17'46.5"	Δ = 17°01'27.7"	Δ = 42°45'29.0"	Δ = 133.00'	
LS = 82.00'	LS = 38.38'	LS = 192.00'	LS = 145.00'	LS = 153.00'	LS = 133.00'	LS = 82.00'	LS = 38.38'	LS = 192.00'	LS = 145.00'	LS = 153.00'	LS = 133.00'	LS = 82.00'	LS = 38.38'	LS = 192.00'	LS = 145.00'	LS = 153.00'	LS = 133.00'	LS = 82.00'	LS = 38.38'	LS = 192.00'	LS = 145.00'	LS = 153.00'	LS = 133.00'	
LT = 120.00'	LT = 91.22'	LT = 120.00'	LT = 91.22'	LT = 98.67'	LT = 98.67'	LT = 120.00'	LT = 91.22'	LT = 120.00'	LT = 91.22'	LT = 98.67'	LT = 98.67'	LT = 120.00'	LT = 91.22'	LT = 120.00'	LT = 91.22'	LT = 98.67'	LT = 98.67'	LT = 120.00'	LT = 91.22'	LT = 120.00'	LT = 91.22'	LT = 98.67'	LT = 98.67'	LT = 120.00'
ST = 64.00'	ST = 48.86'	ST = 64.00'	ST = 48.86'	ST = 44.34'	ST = 44.34'	ST = 64.00'	ST = 48.86'	ST = 64.00'	ST = 48.86'	ST = 44.34'	ST = 44.34'	ST = 64.00'	ST = 48.86'	ST = 64.00'	ST = 48.86'	ST = 44.34'	ST = 44.34'	ST = 64.00'	ST = 48.86'	ST = 64.00'	ST = 48.86'	ST = 44.34'	ST = 44.34'	ST = 64.00'
SE = 0.8	SE = 0.8	SE = 0.8	SE = 0.8	SE = 0.8	SE = 0.8	SE = 0.8	SE = 0.8	SE = 0.8	SE = 0.8	SE = 0.8	SE = 0.8	SE = 0.8	SE = 0.8	SE = 0.8	SE = 0.8	SE = 0.8	SE = 0.8	SE = 0.8	SE = 0.8	SE = 0.8	SE = 0.8	SE = 0.8	SE = 0.8	SE = 0.8
RO = 136.96	RO = 145	RO = 136.96	RO = 145	RO = 133	RO = 133	RO = 136.96	RO = 145	RO = 136.96	RO = 145	RO = 133	RO = 133	RO = 136.96	RO = 145	RO = 136.96	RO = 145	RO = 133	RO = 133	RO = 136.96	RO = 145	RO = 136.96	RO = 145	RO = 133	RO = 133	RO = 136.96



\$DATE\$

MATCHLINE -L- STA. 30+00 - SEE SHEET 5