

PROJECT REFERENCE NO. <i>R-2915A</i>	SHEET NO. <i>37</i>
ROADWAY DESIGN ENGINEER SEAL 26960 Reed Schuler 7/23/2015	HYDRAULICS ENGINEER SEAL 036188 Will Weatherse 7/23/2015

**RS&H**  
IMPROVING YOUR WORLD  
© 2012 REYNOLDS, SMITH AND HILLS, INC.  
RS&H Architects-Engineers-Planners, Inc.  
1520 South Boulevard, Suite 200  
Charlotte, NC 28203  
Phone: 704-752-0610  
NC License No. F-0493 www.rsandh.com

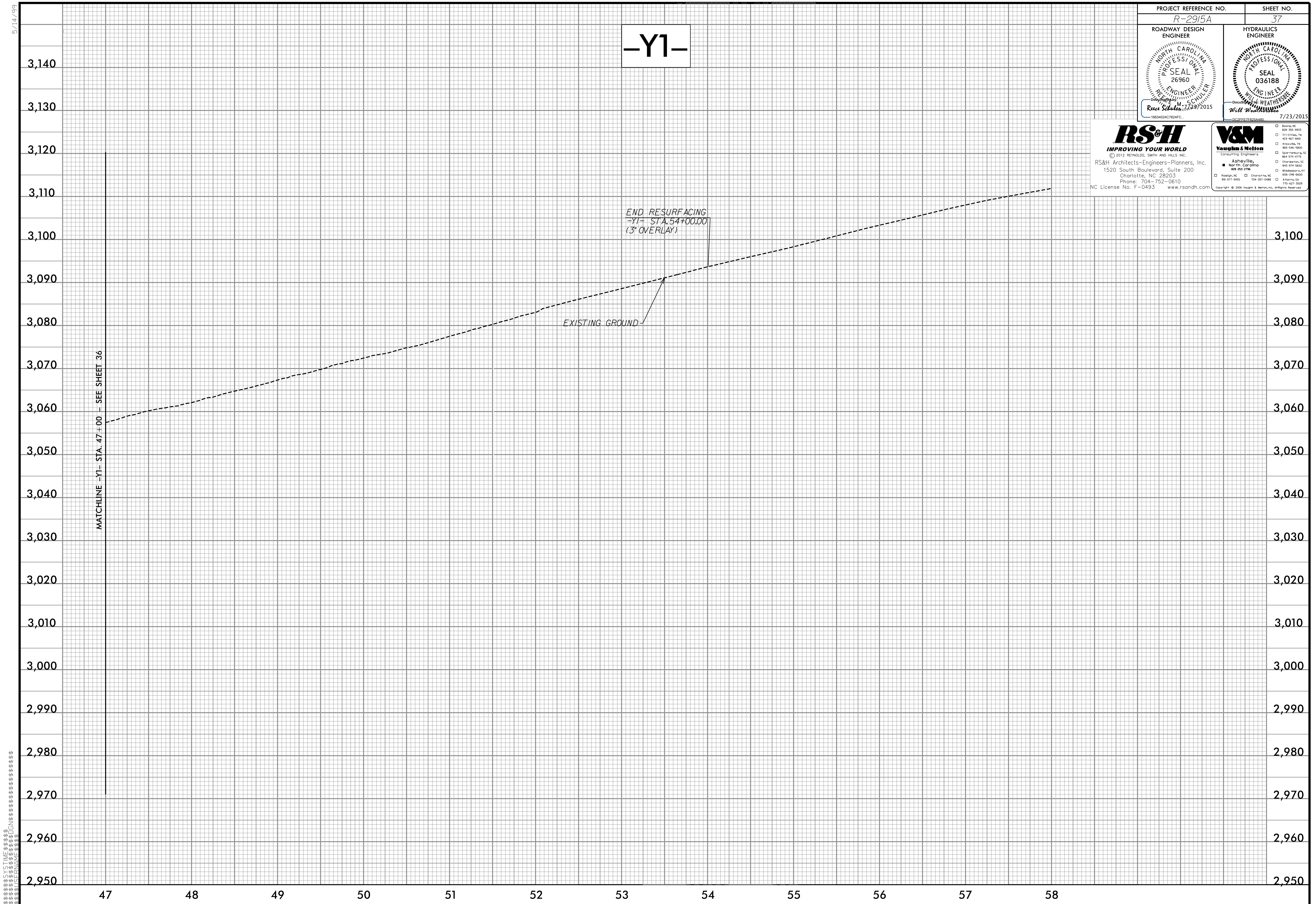
**V&M**  
Vaughan & Melton  
Consulting Engineers  
Asheville, North Carolina  
858-283-8788  
Raleigh, NC 919-977-9455  
Charlotte, NC 704-357-0488  
Atlanta, GA 770-421-1909  
Copyright © 2006 Vaughan & Melton, Inc. All Rights Reserved.

**-Y1-**

MATCHLINE -Y1- STA. 47 ± 00 - SEE SHEET 36

END RESURFACING  
-Y1- STA. 54 ± 00.00  
(3" OVERLAY)

EXISTING GROUND



5/14/99

3,140  
3,130  
3,120  
3,110  
3,100  
3,090  
3,080  
3,070  
3,060  
3,050  
3,040  
3,030  
3,020  
3,010  
3,000  
2,990  
2,980  
2,970  
2,960  
2,950