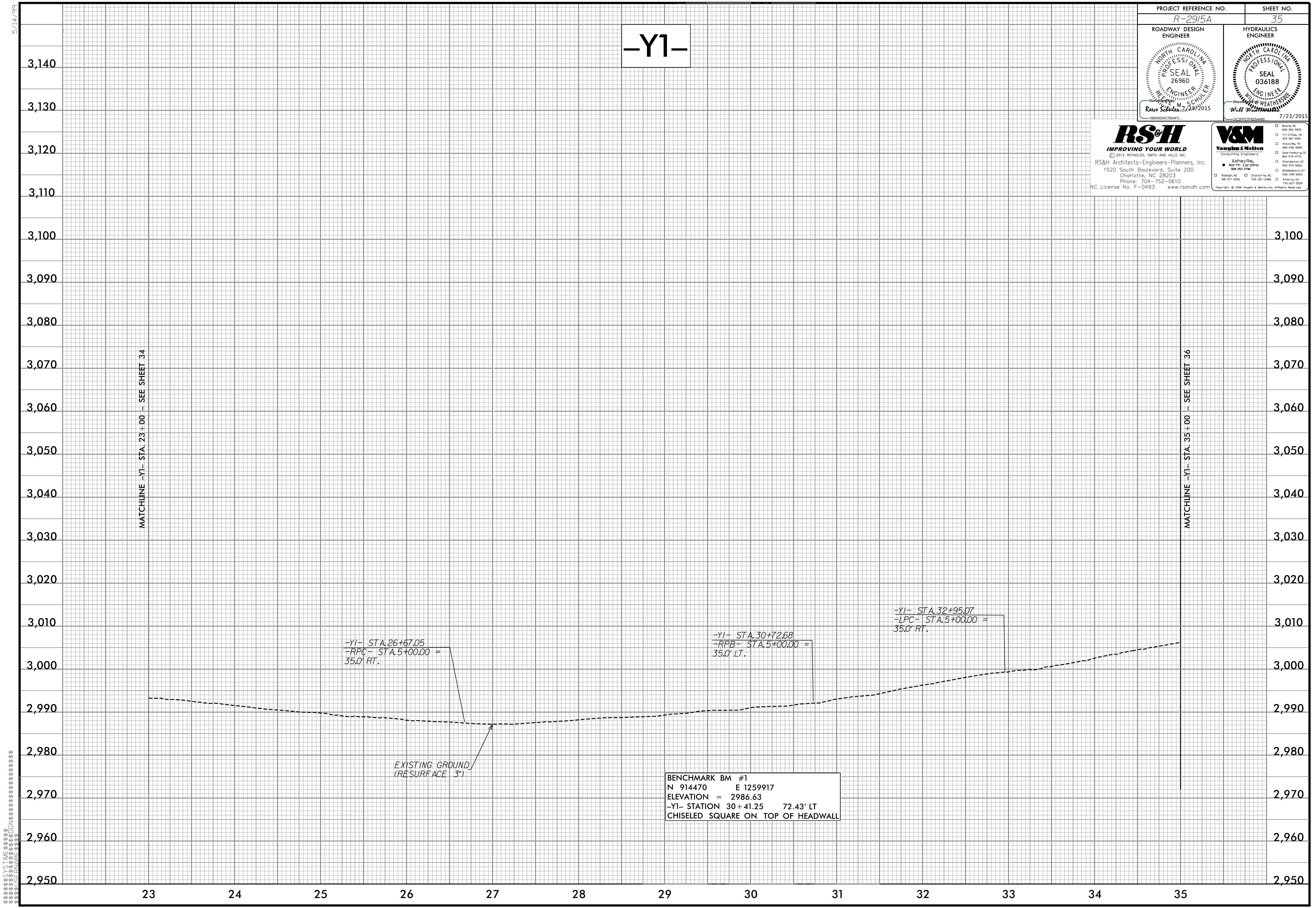


| | |
|--|--|
| PROJECT REFERENCE NO. <i>R-2915A</i> | SHEET NO. 35 |
| ROADWAY DESIGN ENGINEER Professional Seal: 26960 REYNOLDS, SMITH AND HILLS, INC. (RSH) Reese Schuler, P.E. (10/19/2015) | HYDRAULICS ENGINEER Professional Seal: 036188 WILLIAMS WEATHERS Will Williams, P.E. (7/23/2015) |

RS&H
IMPROVING YOUR WORLD
© 2012 REYNOLDS, SMITH AND HILLS, INC.
RS&H Architects-Engineers-Planners, Inc.
1520 South Boulevard, Suite 200
Charlotte, NC 28203
Phone: 704-752-0610
NC License No. F-0493 www.rsandh.com

V&M
Vaughan & Melton
Consulting Engineers
Asheville, North Carolina
859-283-8788
999-977-9455
704-357-0488
1702-621-1800
Arlington, VA
Copyright © 2006 Vaughn & Melton, Inc. All Rights Reserved.

-Y1-



MATCHLINE -Y1- STA. 23+00 - SEE SHEET 34

MATCHLINE -Y1- STA. 35+00 - SEE SHEET 36

-Y1- STA. 26+67.05
-RPC- STA. 5+00.00 =
35.0' RT.

-Y1- STA. 30+72.68
-RPB- STA. 5+00.00 =
35.0' LT.

-Y1- STA. 32+95.07
-LPC- STA. 5+00.00 =
35.0' RT.

EXISTING GROUND
(RESURFACE 3")

BENCHMARK BM #1
N 914470 E 1259917
ELEVATION = 2986.63
-Y1- STATION 30+41.25 72.43' LT
CHISELED SQUARE ON TOP OF HEADWALL

5/14/99

1
2
3
4
5
6
7
8
9
10
11
12
13
14
15
16
17
18
19
20
21
22
23
24
25
26
27
28
29
30
31
32
33
34
35
36
37
38
39
40
41
42
43
44
45
46
47
48
49
50
51
52
53
54
55
56
57
58
59
60
61
62
63
64
65
66
67
68
69
70
71
72
73
74
75
76
77
78
79
80
81
82
83
84
85
86
87
88
89
90
91
92
93
94
95
96
97
98
99
100