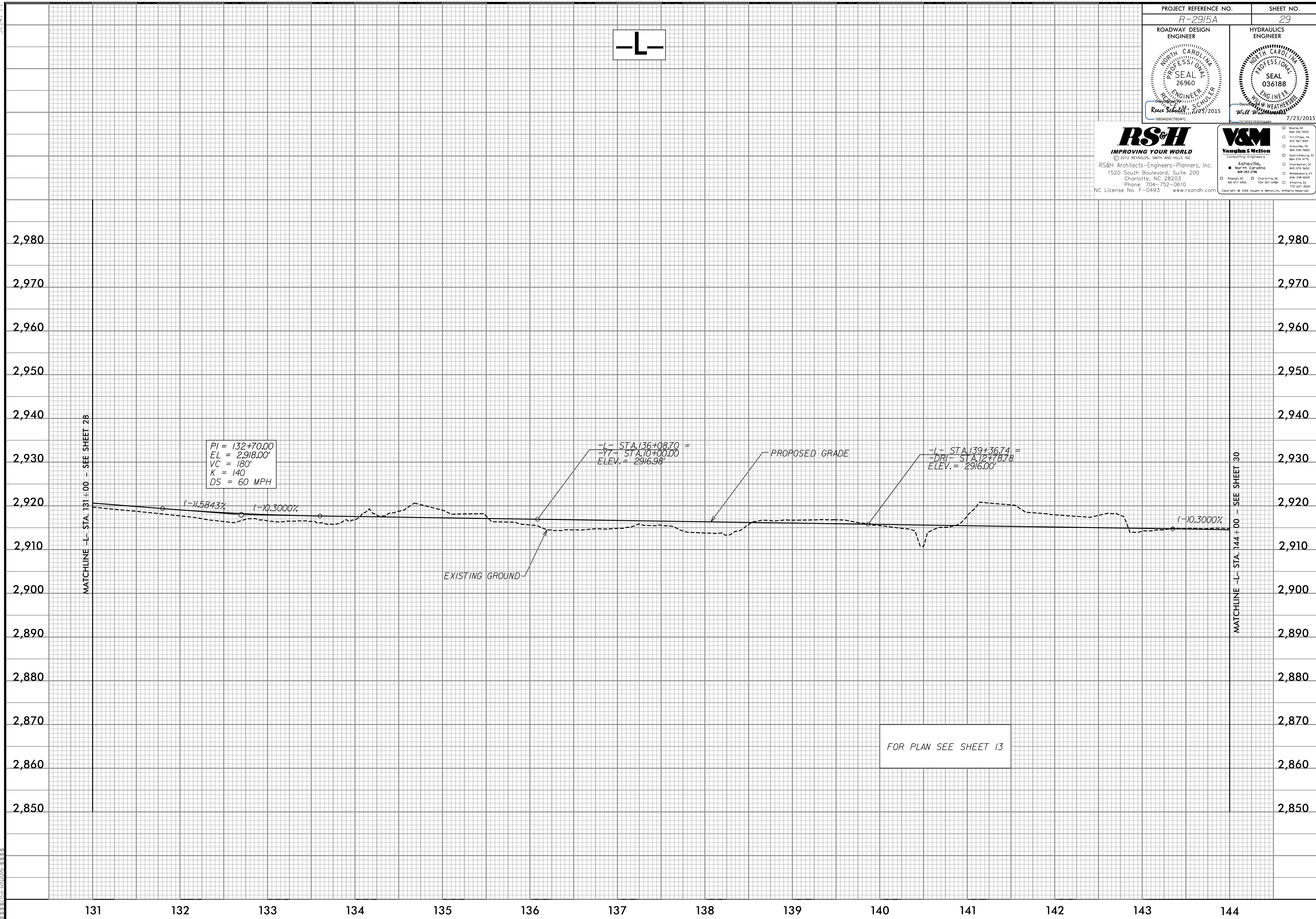


PROJECT REFERENCE NO. R-2915A	SHEET NO. 29
ROADWAY DESIGN ENGINEER Ruel Smith, P.E. SEAL 26960 10/23/2015	HYDRAULICS ENGINEER Will Weathers, P.E. SEAL 036188 7/23/2015

RS&H
IMPROVING YOUR WORLD
© 2012 REYNOLDS, SMITH AND HILLS, INC.
RS&H Architects-Engineers-Planners, Inc.
1520 South Boulevard, Suite 200
Charlotte, NC 28203
Phone: 704-752-0610
NC License No. F-0493 www.rsandh.com

V&M
Vaughan & Melton
Consulting Engineers
Asheville, North Carolina
919-877-9455 704-357-0488
© 2006 Vaughan & Melton, Inc. All Rights Reserved

-L-



$PI = 132+70.00$
 $EL = 2,918.00'$
 $VC = 180'$
 $K = 140$
 $DS = 60 MPH$

-L- STA 136+08.70 =
 -Y- STA 10+00.00
 ELEV. = 2,916.98

-L- STA 139+36.74 =
 -DRI- STA 12+78.78
 ELEV. = 2,916.00

FOR PLAN SEE SHEET 13

5/14/99

MATCHLINE -L- STA. 131+00 - SEE SHEET 28

MATCHLINE -L- STA. 144+00 - SEE SHEET 30